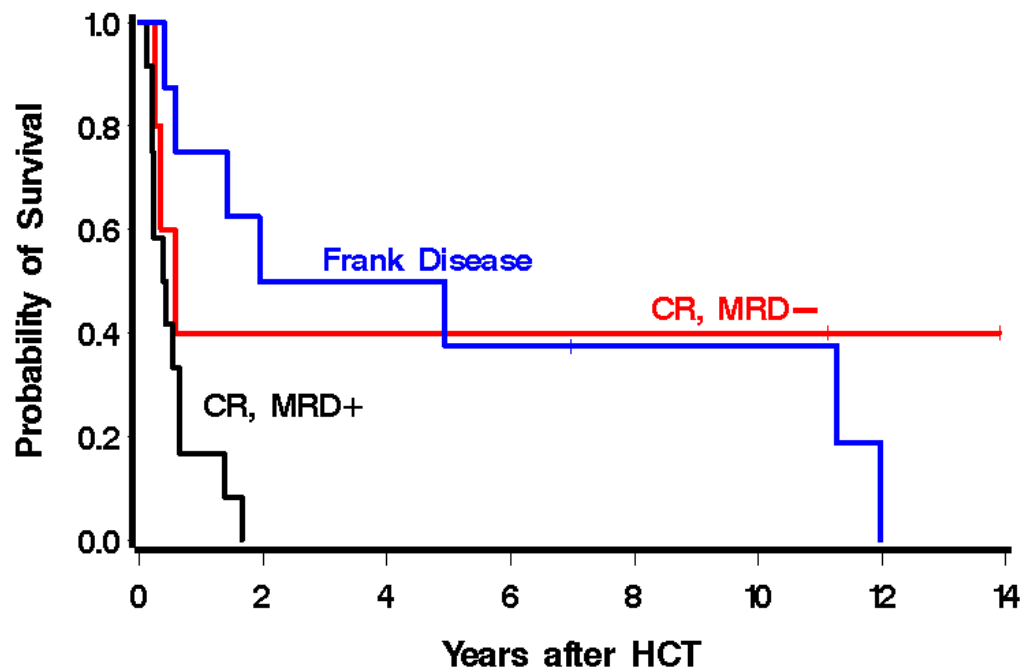


Supplementary Figure S2



Supplementary Figure S2: Survival by disease burden at time of HCT. Estimated probability of survival for patients in a morphologic remission (bone marrow blasts <5% by morphology) with (CR, MRD+) or without measurable residual disease (CR, MRD-), or with frank leukemia (marrow blasts \geq 5% by morphology) before receiving ^{131}I -anti-CD45 RIT before allogeneic HCT using haploidentical donors.