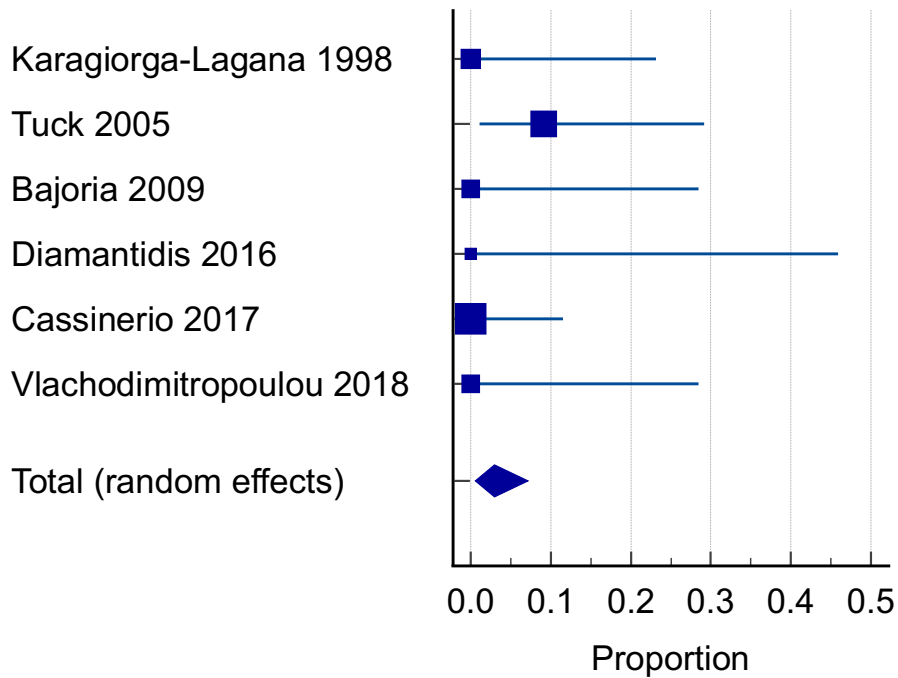


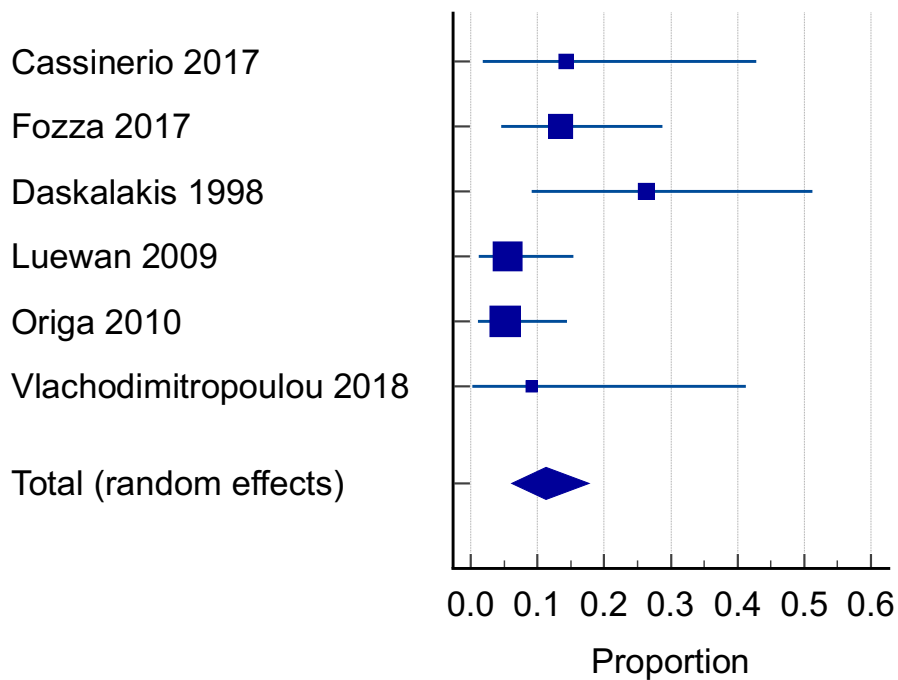
Supplemental figures

Figure 1. Forest plots for proportional metaanalyses in TDT

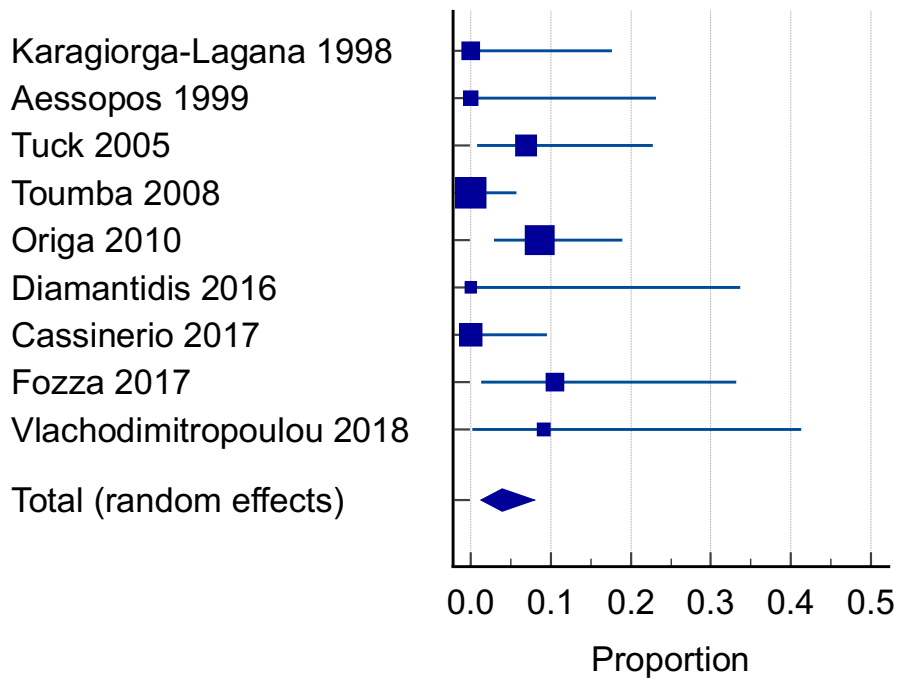
a. Mortality



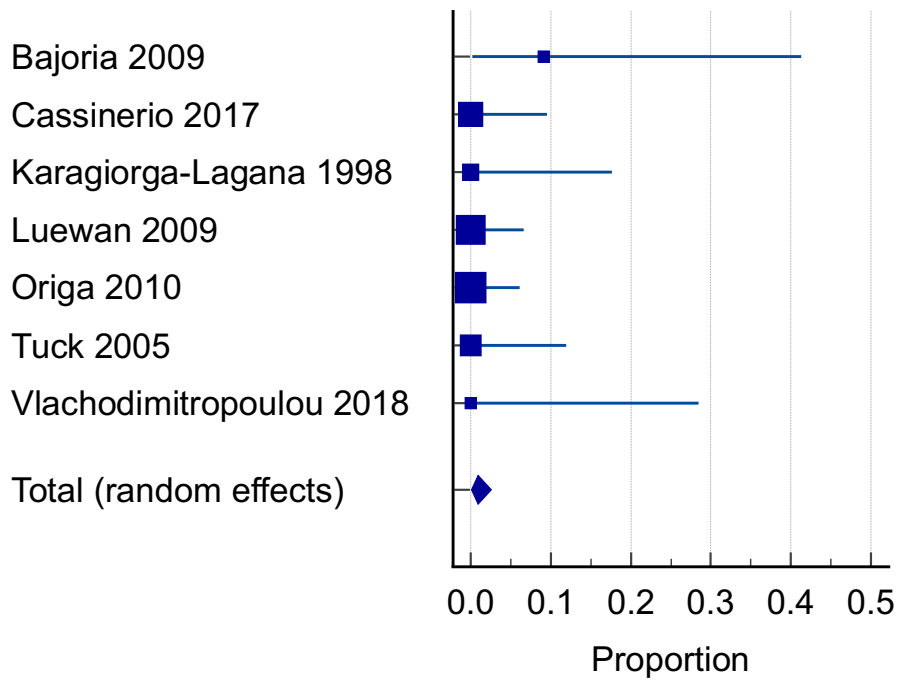
b. Pre-eclampsia



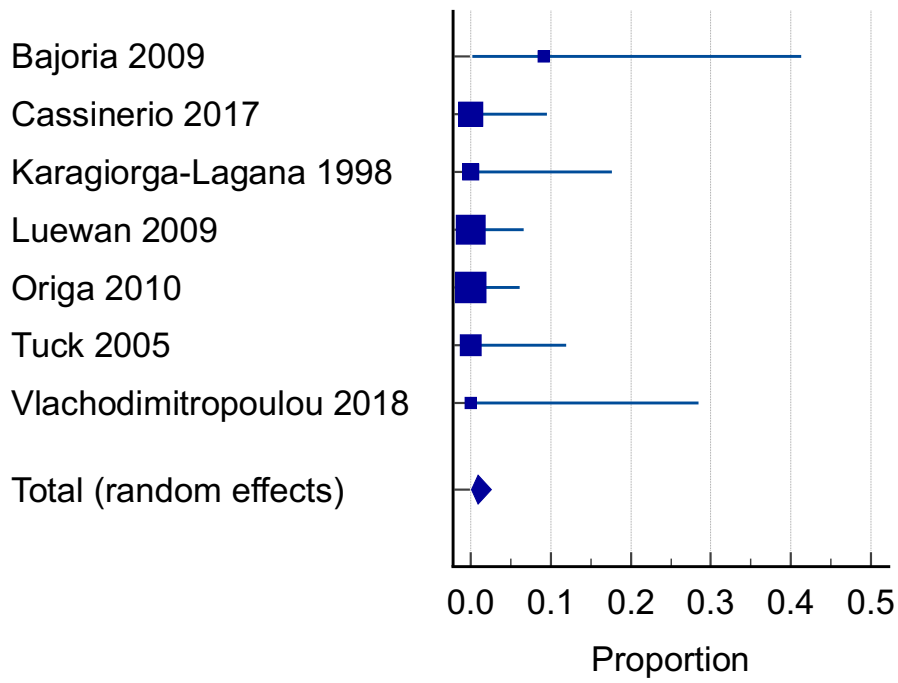
c. GDM



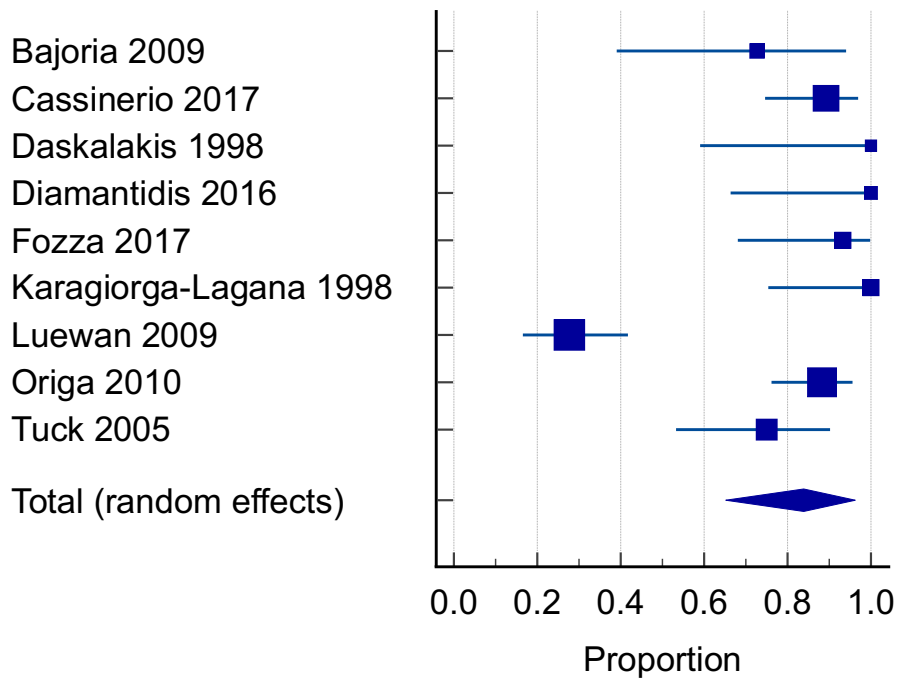
d. VTE



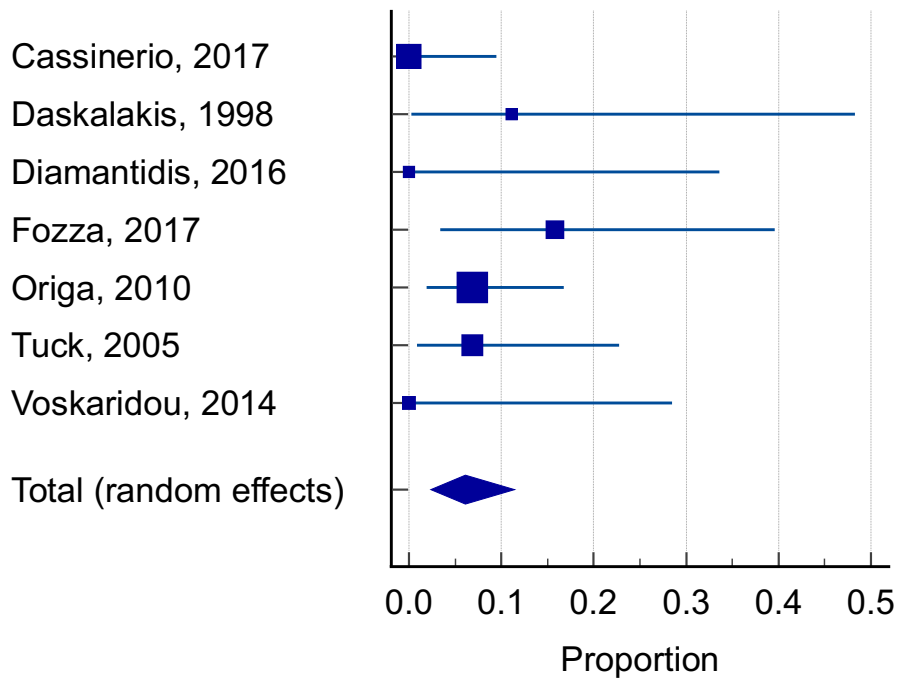
e. Heart failure



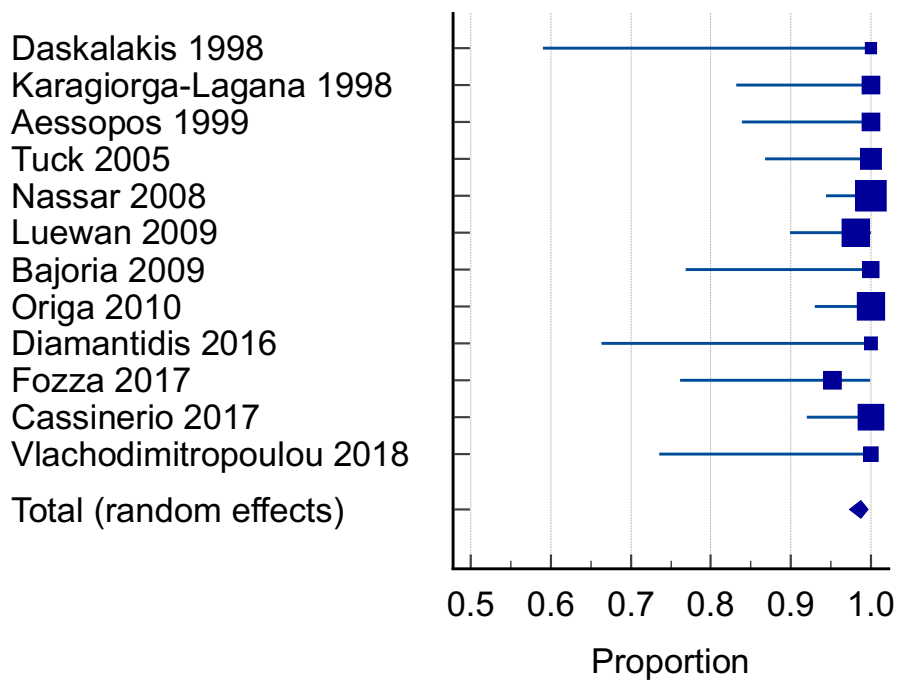
f. Caesarean section



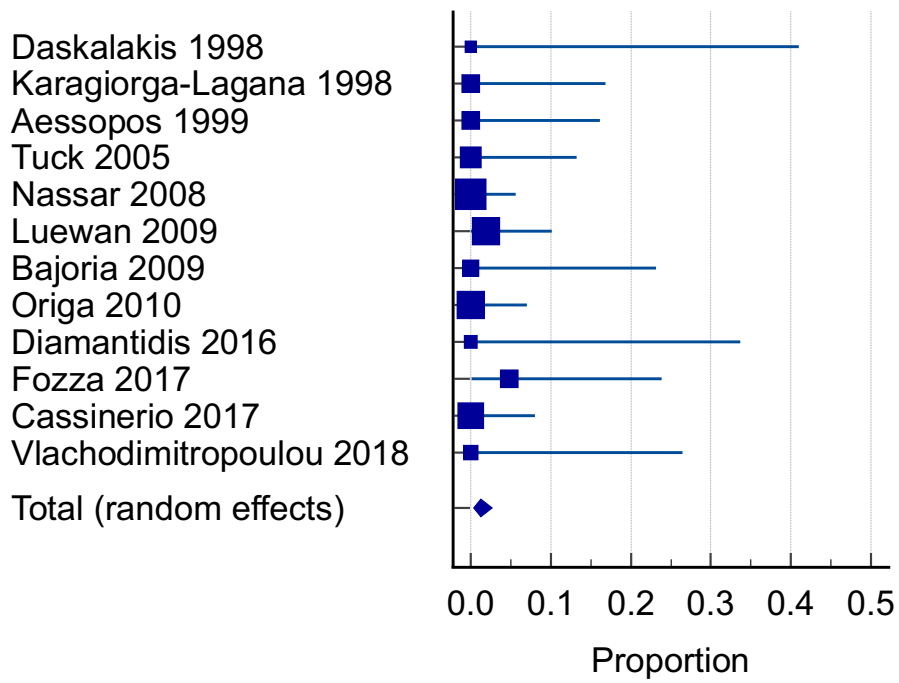
g. Miscarriage



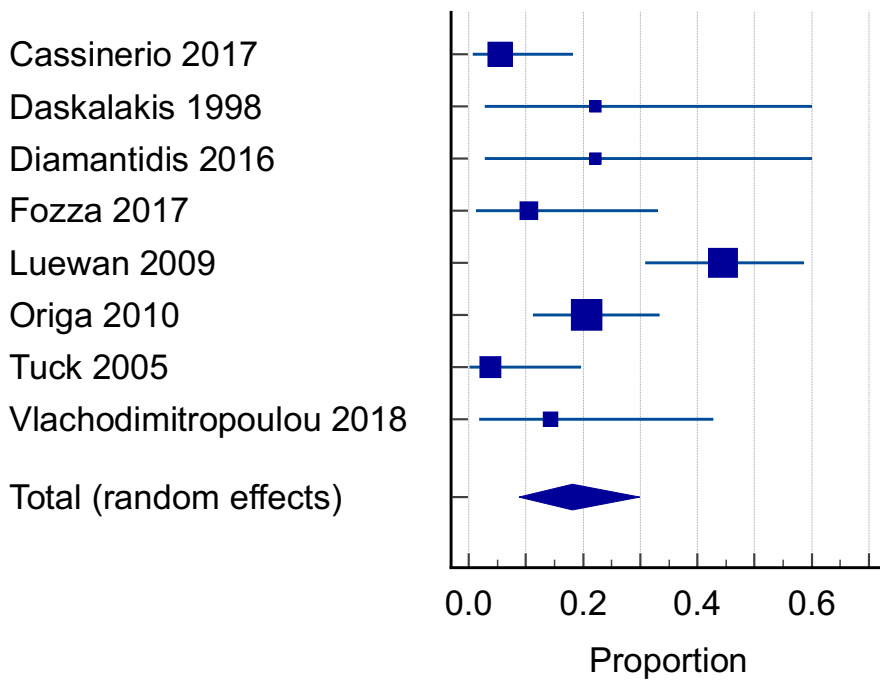
h. Live birth



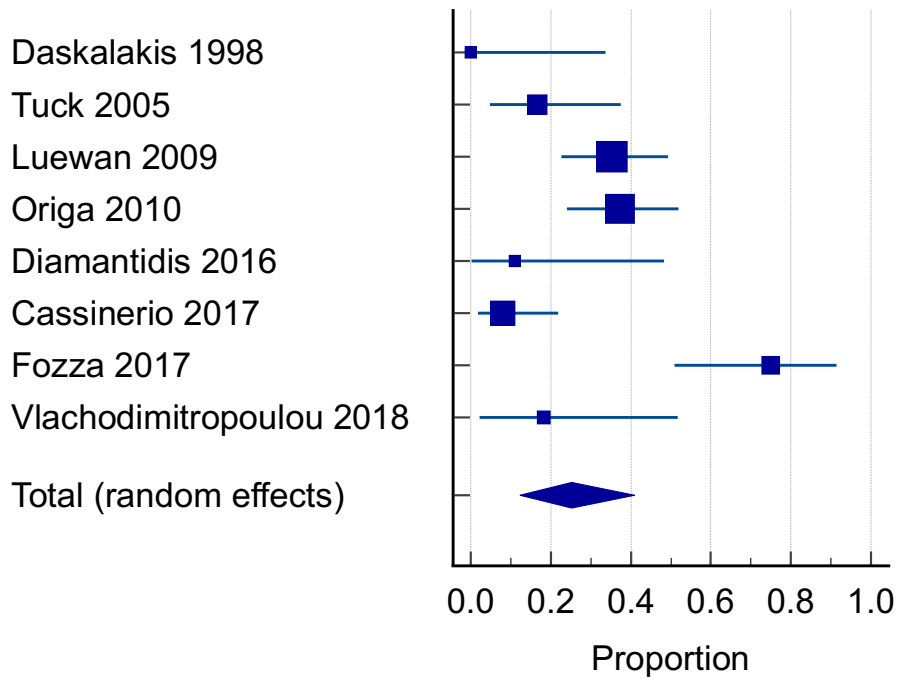
i. Still birth rate



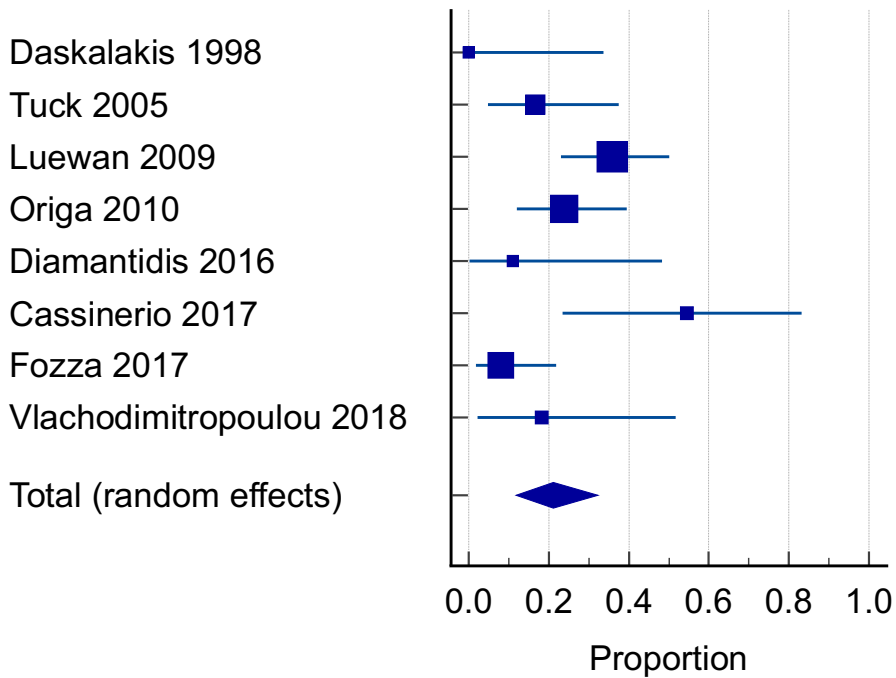
j. Small for gestational age



k. Preterm birth < 37 weeks



l. Preterm birth < 37 weeks, excluding multiples



m. NICU admission

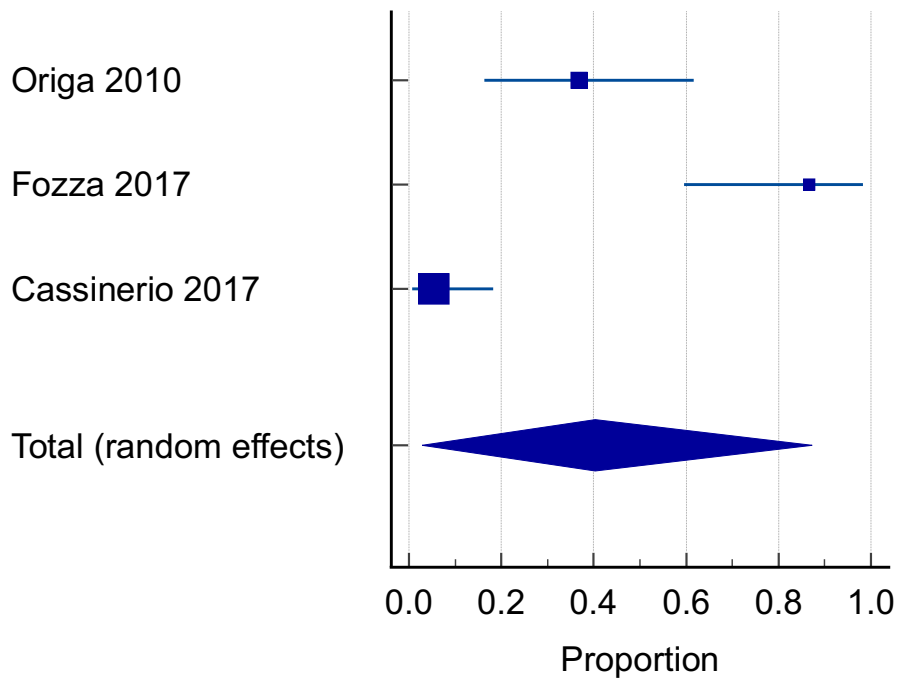
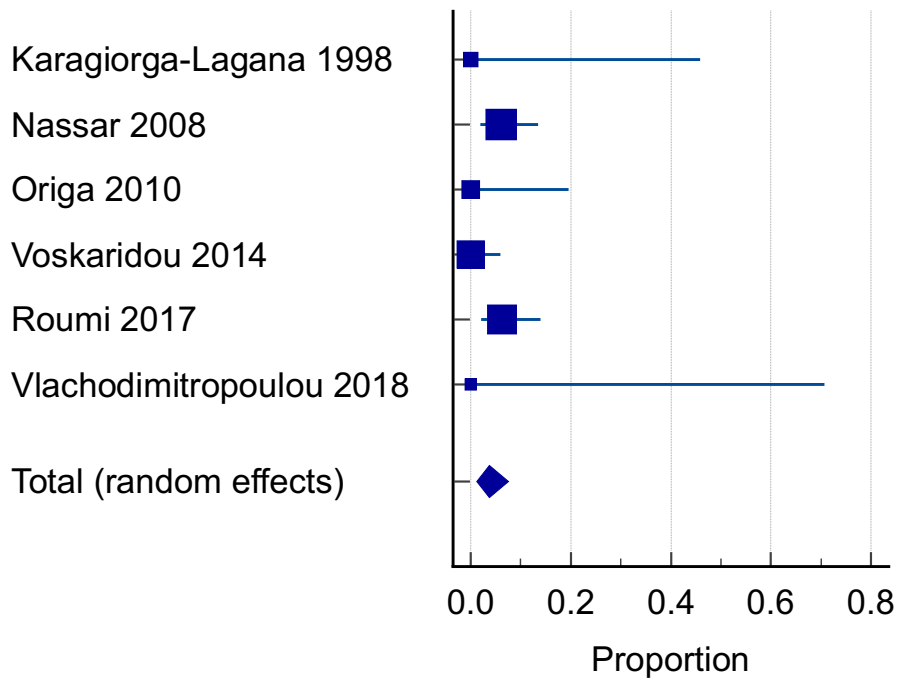
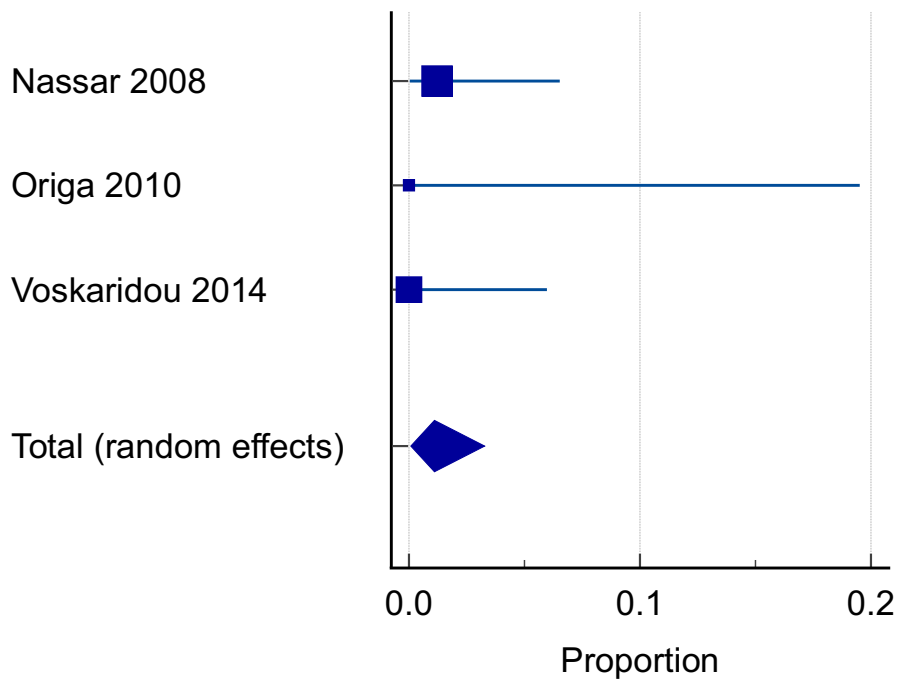


Figure 2. Forest plots for proportional metaanalyses in TDT

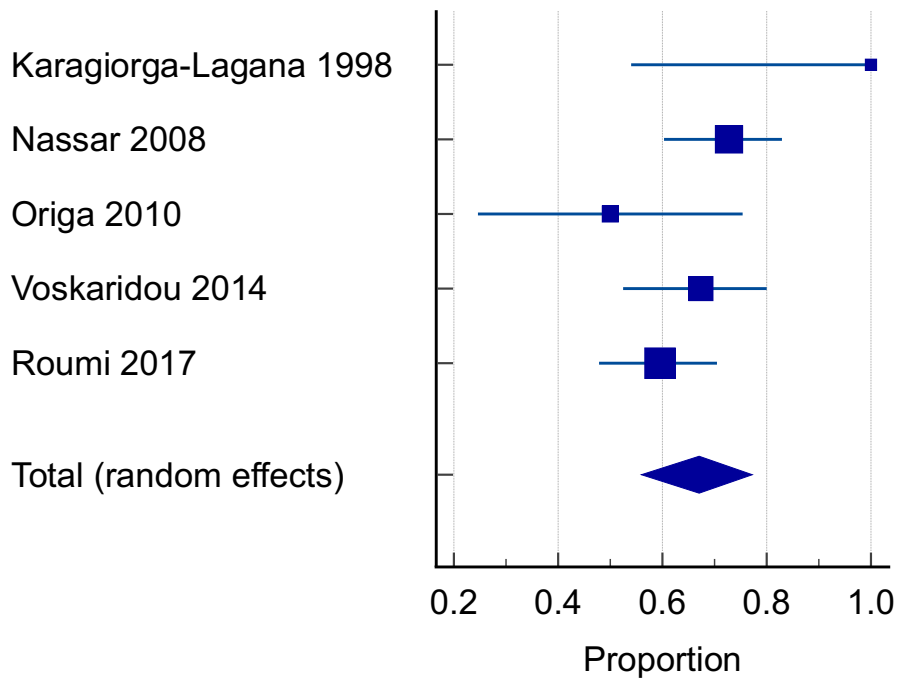
a. VTE



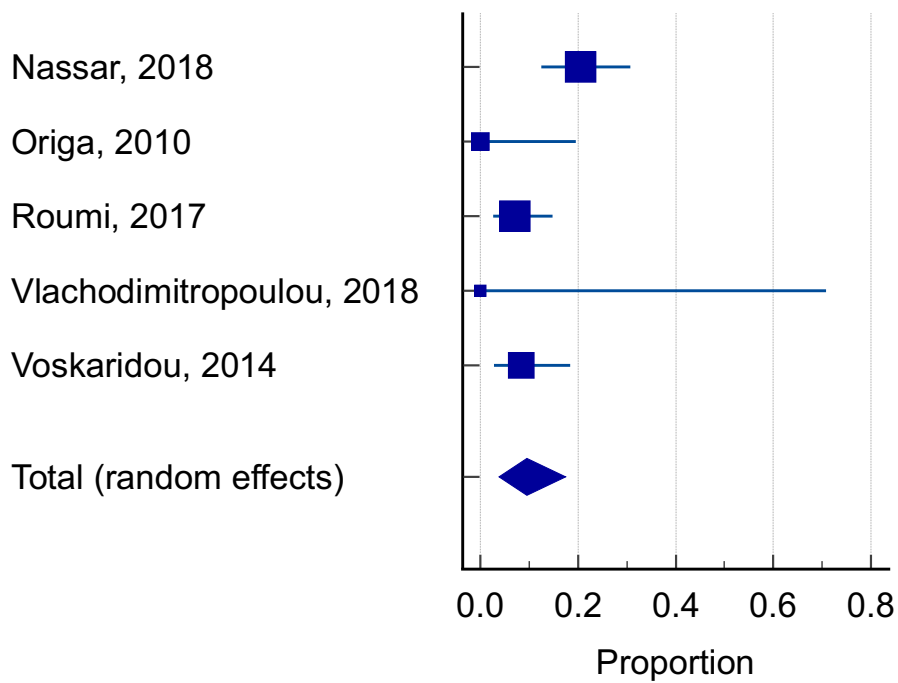
b. Heart failure



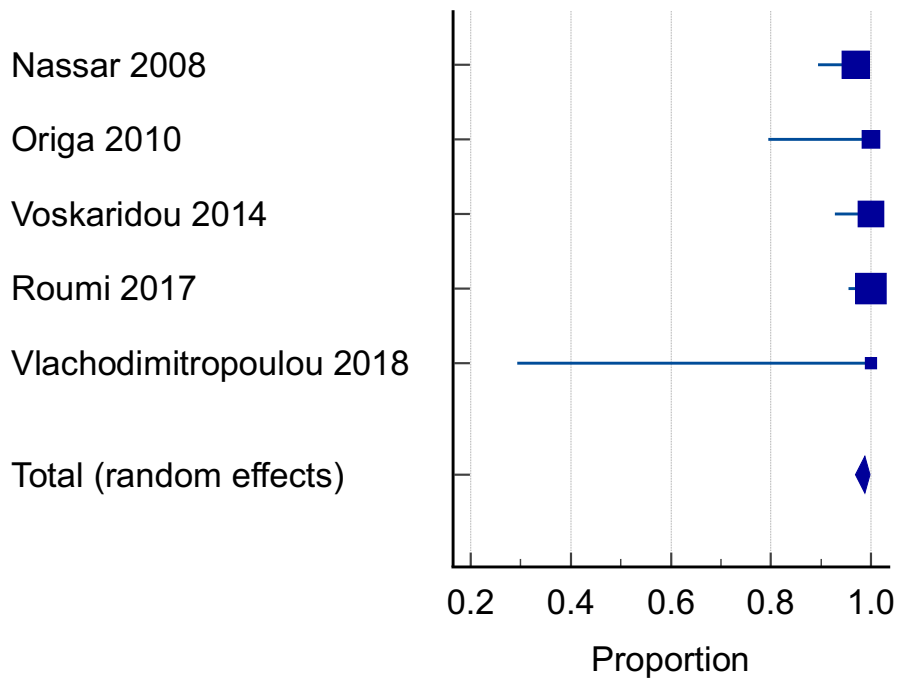
c. Caesarean section



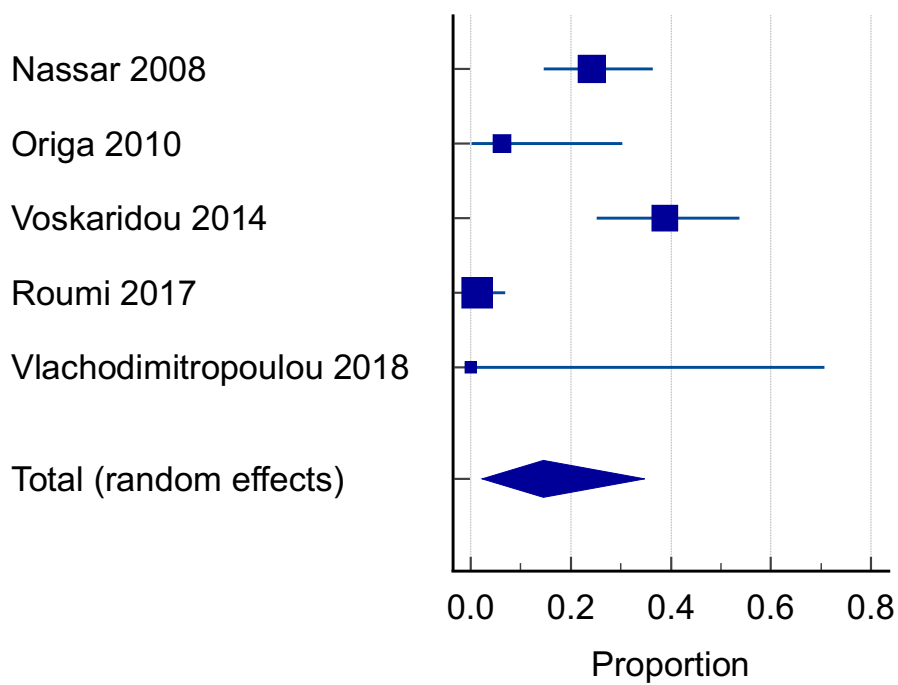
d. Miscarriage



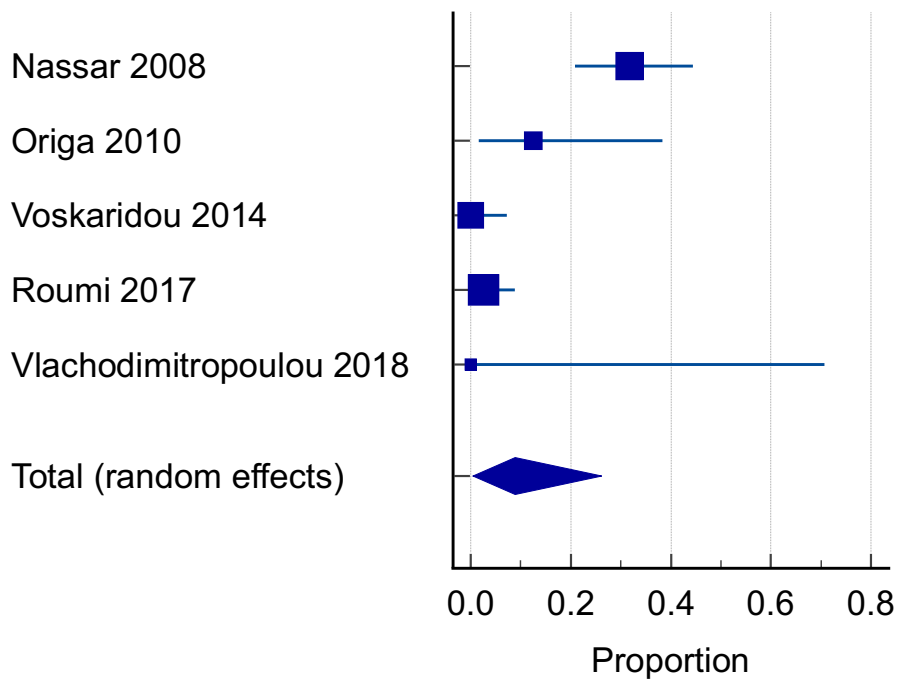
e. Live birth



f. Small for gestational age



g. Preterm birth < 37 weeks



Supplemental Table 1: Risk of bias assessment of descriptive and cohort studies in pregnant patients with beta-thalassemia major and beta-thalassemia intermedia

Author (year)	<u>Risk of bias assessment (NOS)</u>									
Case-Series	Clear criteria for inclusion?	Condition measured in a standard, reliable way for all included participants	Valid methods used for identification of the condition for all included participants	Consecutive inclusion of participants	Complete inclusion of participants	Clear reporting of demographics for study participants	Clear reporting of participants' clinical information	Clear reporting of outcomes or follow-up results for cases	Clear reporting of the presenting site(s)/clinic(s) demographic information	Appropriate statistical analysis
Aessopos (1999)	Yes	Yes	Unclear	Yes	Yes	No	Yes	Yes	No	Unclear
Bajoria (2009)	Yes	Unclear	Unclear	Unclear	Unclear	No	No	No	No	Yes
Cassinero (2017)	Yes	Unclear	Unclear	Unclear	Unclear	Yes	Yes	Yes	Yes	Yes
Daskalakis (1998)	Yes	Yes	Yes	Unclear	Unclear	No	Yes	Yes	No	Yes
Diamantidis (2016)	Yes	Unclear	Unclear	Unclear	Yes	No	Yes	Yes	No	Yes
Fozza (2017)	Yes	Unclear	Unclear	Unclear	Unclear	No	No	Yes	No	Yes
Karagiorga-Lagana (1998)	Yes	Unclear	Unclear	Unclear	Unclear	Yes	Yes	Yes	No	Yes
Nassar (2008)	Yes	Unclear	Unclear	Unclear	Unclear	No	No	Yes	No	Yes
Origa (2010)	Yes	Yes	Unclear	Yes	Yes	Yes	Yes	Yes	Yes	Yes
Roumi (2017)	Yes	Yes	Yes	Unclear	Unclear	No	Yes	Yes	No	Yes

Toumba (2008)	Yes	Unclear	Unclear	Yes	Yes	No	No	No	Yes	Yes
Tuck (2005)	Yes	Unclear	Unclear	Unclear	Unclear	Unclear	Yes	Yes	No	Yes
Vlachodimitropoulou (2018)	Yes	Unclear	Unclear	Yes	Yes	Yes	Yes	Yes	Yes	Yes
Voskaridou (2014)	Yes	Yes	Yes	Unclear	Yes	Yes	Yes	Yes	Yes	Yes
Cohort Studies	Selection		Comparability		Outcome		Total/9		Risk of bias (1-3: high, 4-6: moderate, 7-9: low)	
Luewan (2009)	****		**		***		9/9		Low	