

Role of Resection of the Primary in Metastatic Well and Intermediate-Differentiated Neuroendocrine Tumor

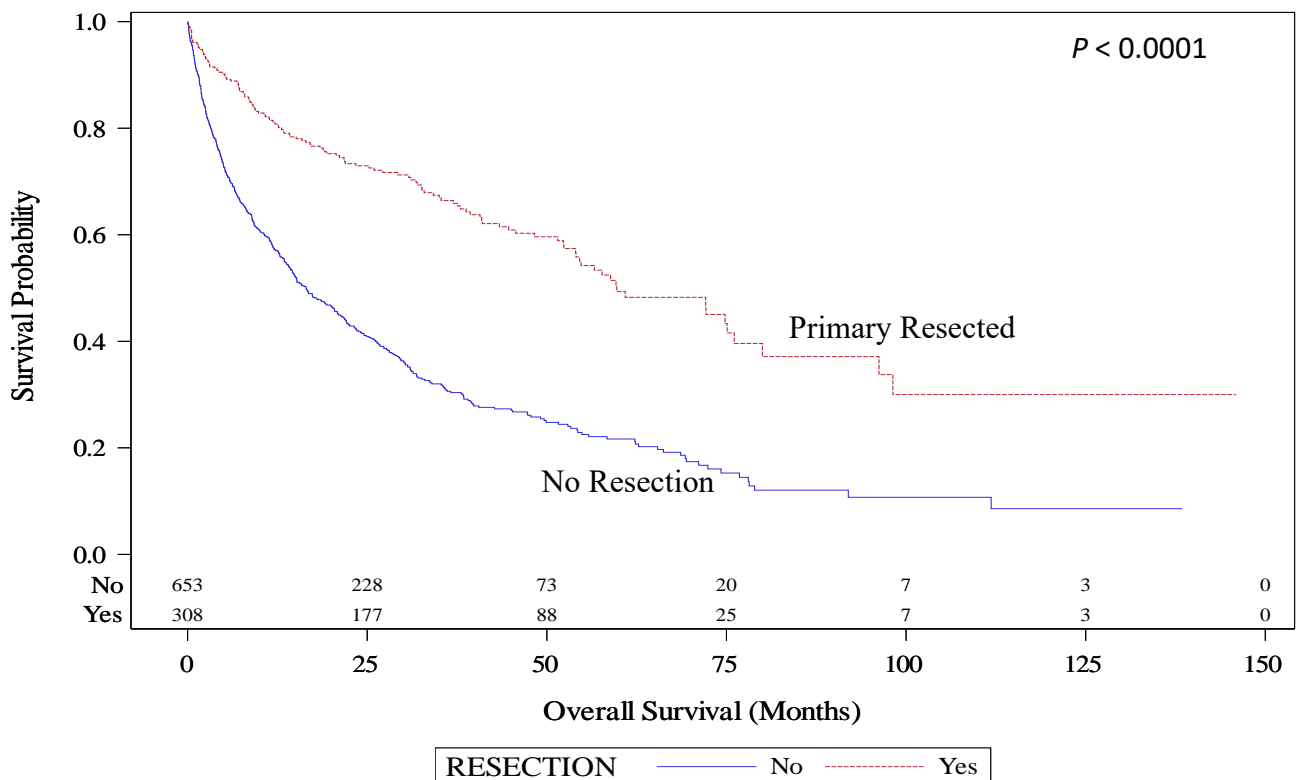
SUPPLEMENTAL DIGITAL CONTENT

SUPPLEMENTAL TABLE 1. Univariate and Multivariable Analyses of OS by Resection of Primary Subtypes

Subtype Resection (Yes vs No)	Univariate Analysis		Multivariable Analysis	
	Hazard Ratio (95% CI)	P	Hazard Ratio (95% CI)	P
Pancreas				
Yes	0.29 (0.19–0.43)	<0.001	0.33 (0.22–0.49)	<0.001
No	1 (Reference)		1 (Reference)	
Small bowel				
Yes	0.47 (0.36–0.61)	<0.001	0.76 (0.50–1.16)	0.210
No	1 (Reference)		1 (Reference)	
Other				
Yes	0.39 (0.32–0.48)	<0.001	0.44 (0.32–0.61)	<0.001
No	1 (Reference)		1 (Reference)	

Kaplan Meier Analysis

With Number of Subjects at Risk



Resection	No. of Subjects	Event	Censored	Median Survival (95% CI)	12 mo Survival (95% CI)	60 mo Survival (95% CI)
No	653	471 (72%)	182 (28%)	16.5 (14.2–20.3)	57.3% (53.4%–61.1%)	21.7% (17.9%–25.7%)
Yes	308	127 (41%)	181 (59%)	59.7 (54–76.1)	81.1% (76.2%–85.1%)	49.3% (41.7%–56.5%)

SUPPLEMENTAL FIGURE 1. Kaplan-Meier plot for resection stratified by primary site (rectum/colon/prostate/kidney/lung/liver/gastric and stomach).