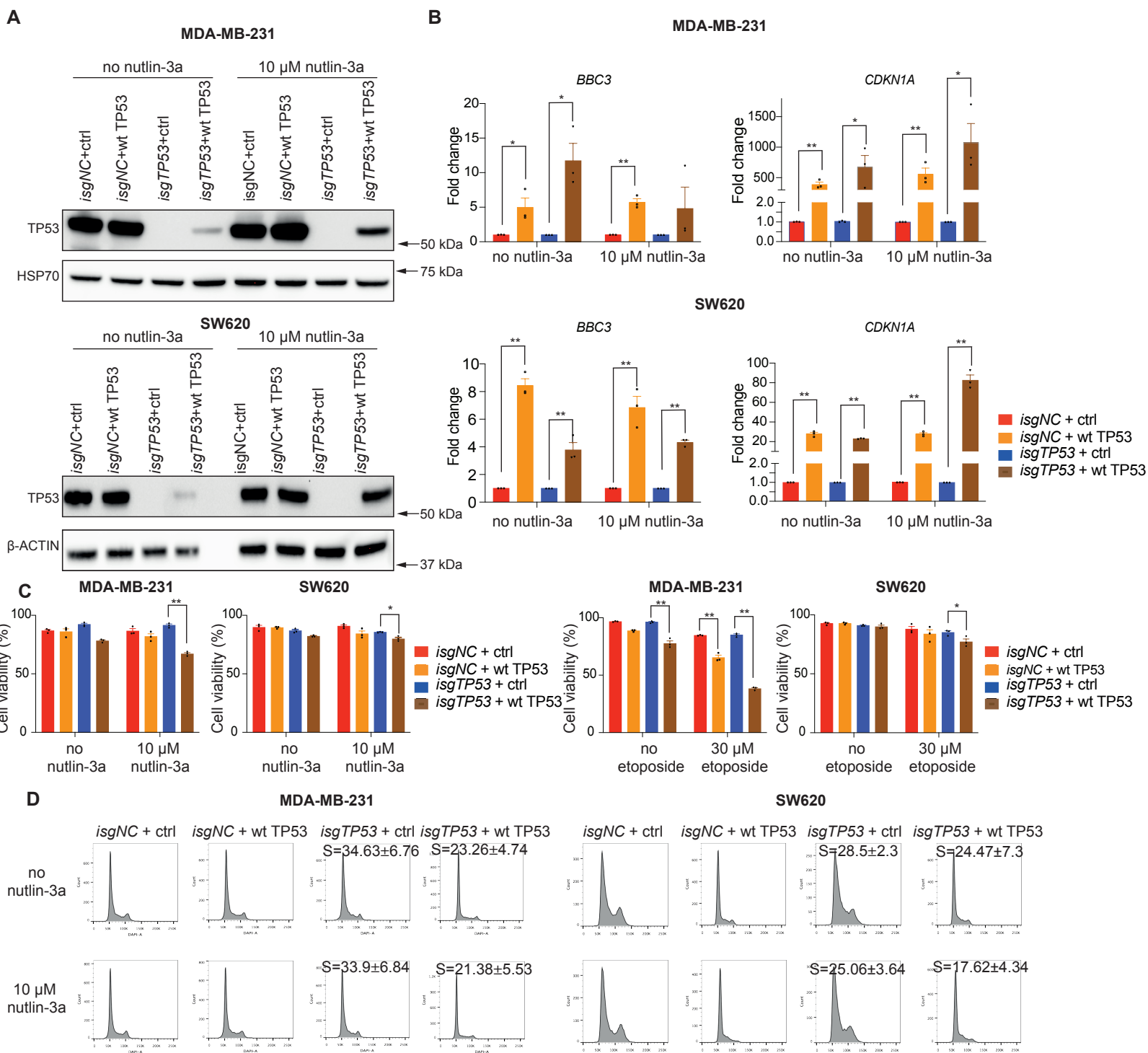


Supplementary Figure 13



Supplementary Figure S13. Mutant TP53 expressing cancer cells retain the machinery to respond to the activation of wt TP53 when mutant TP53 is removed

A. Western blot analysis showing the expression of mutant TP53 or wt TP53 in parental MDA-MB-231 and SW620 cancer cells and the absence of mutant TP53 in their mutant TP53 deficient derivatives, with or without transduction with an expression vector for wt TP53, with or without treatment with 10 μ M nutlin-3a. Probing for β -ACTIN or HSP70 was used as a protein loading control. The Western blots shown are representative of 2 or 3 independent blots from independent experiments. **B.** Abundance of the indicated mRNAs in the cancer cell lines described in (A) with or without treatment with 10 μ M nutlin-3a using DMSO as the vehicle control. N=3 independent experiments. **C.** Cell survival assay of the cancer cell lines described in (A) after treatment with 10 μ M nutlin-3a or 30 μ M etoposide, using DMSO as the vehicle control for both. **D.** Cell cycle analysis of the cancer cell lines described in (A) with or without treatment with 10 μ M nutlin-3a. Data in (B) and (C) are presented as mean \pm SEM of three independent experiments. Data presented in (D) are representative of at least 3 independent experiments.