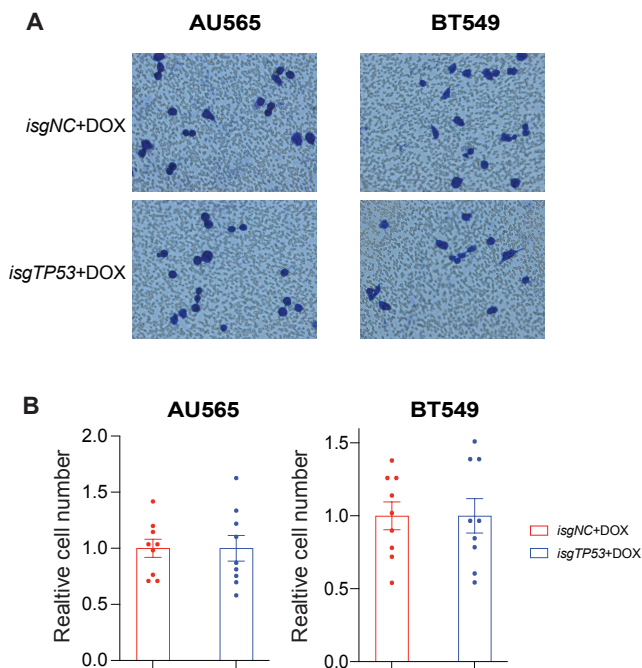


Supplementary Figure 19



Supplementary Figure S19. Removal of mutant TP53 does not impair the migration of human cancer cell lines in vitro

Trans-well assays were performed with the human cancer cell lines AU565 and BT549, comparing control cancer cells expressing mutant TP53 with their mutant TP53 deleted derivatives. **A**. Photographs of examples of trans-well assays. Cancer cells were stained with 1% crystal violet. **B**. Relative numbers of cancer cells are presented from three independent assays described in (A). Data in (B) are presented as mean \pm SEM. No statistically significant differences were found between the control human cancer lines expressing mutant TP53 vs their mutant TP53 deleted derivatives.