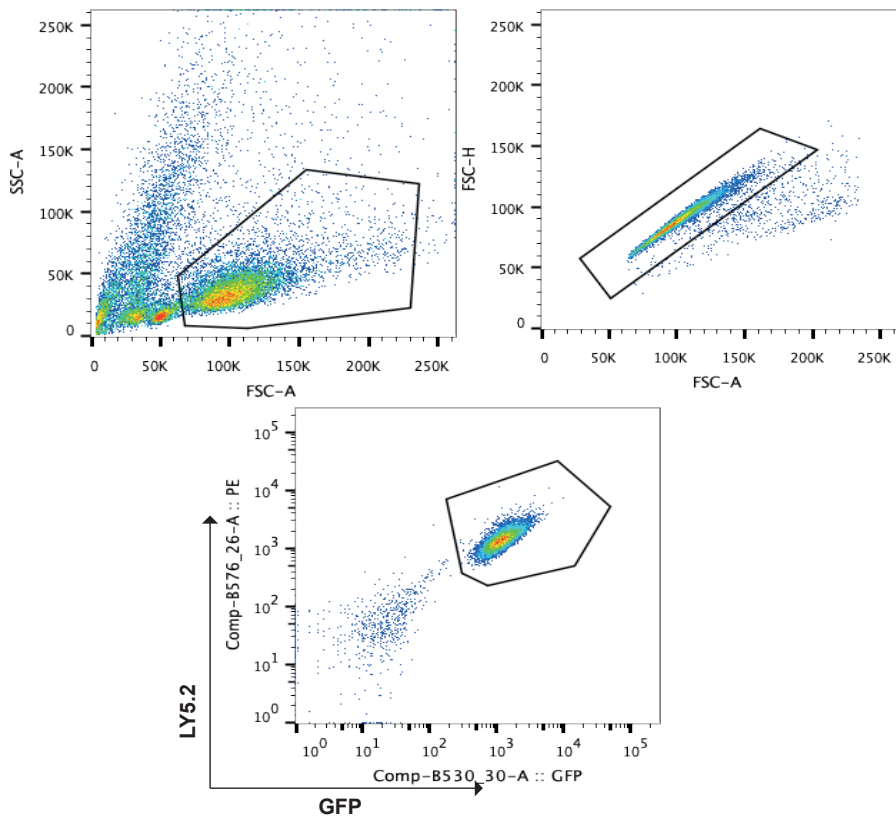


## Supplementary Figure 22



### Supplementary Figure S22. Flow cytometric analysis of GFP and Ly5.2 expression to establish that the lymphoma cells in recipient mice were derived from the transplanted *E $\mu$ -Myc* mouse lymphoma cells

*E $\mu$ -Myc* mouse lymphoma cells (C57BL/6J-Ly5.2 background) were identified in the spleens of sick recipient (lymphoma cell transplanted) immune-competent mice (C57BL/6J-Ly5.1 background) as GFP and Ly5.2 double positive.