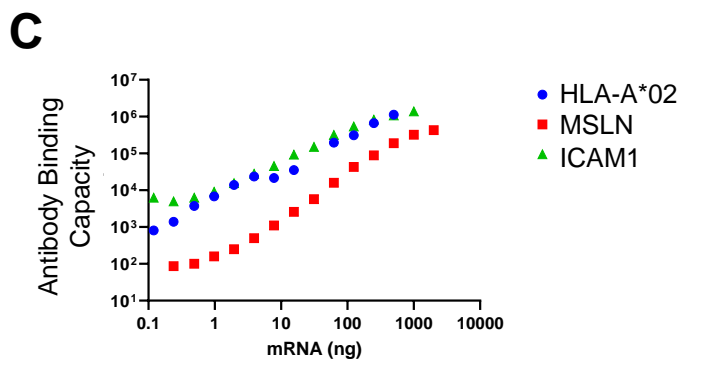
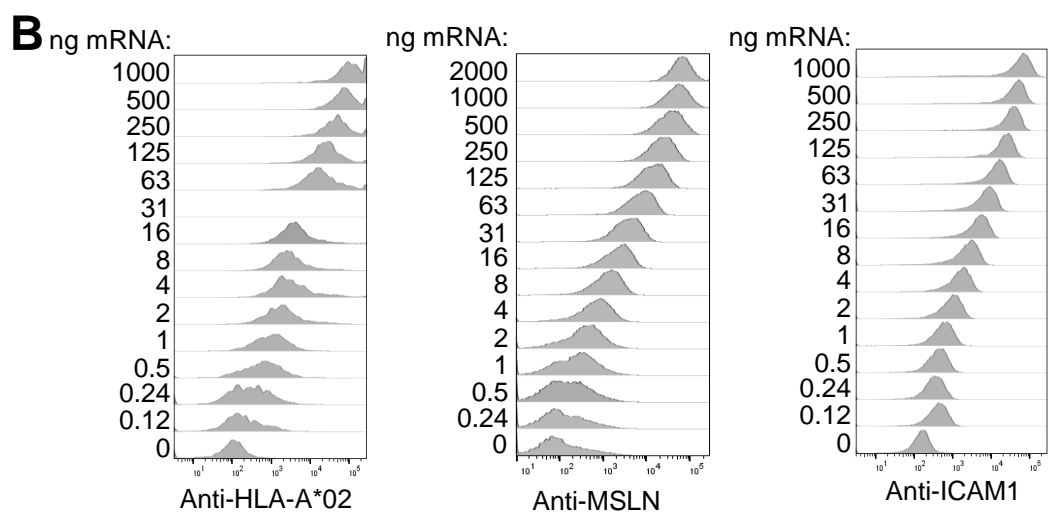
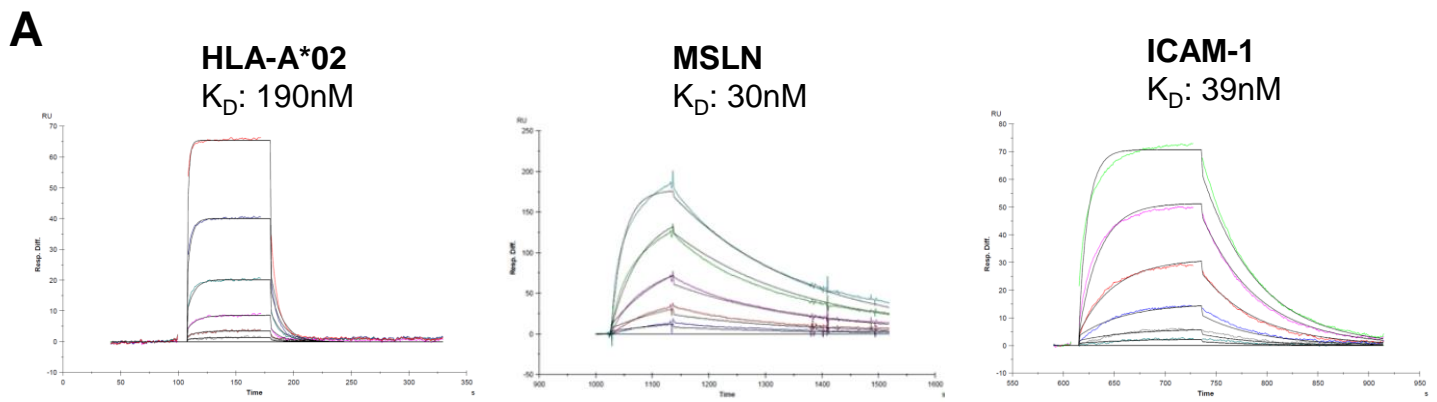
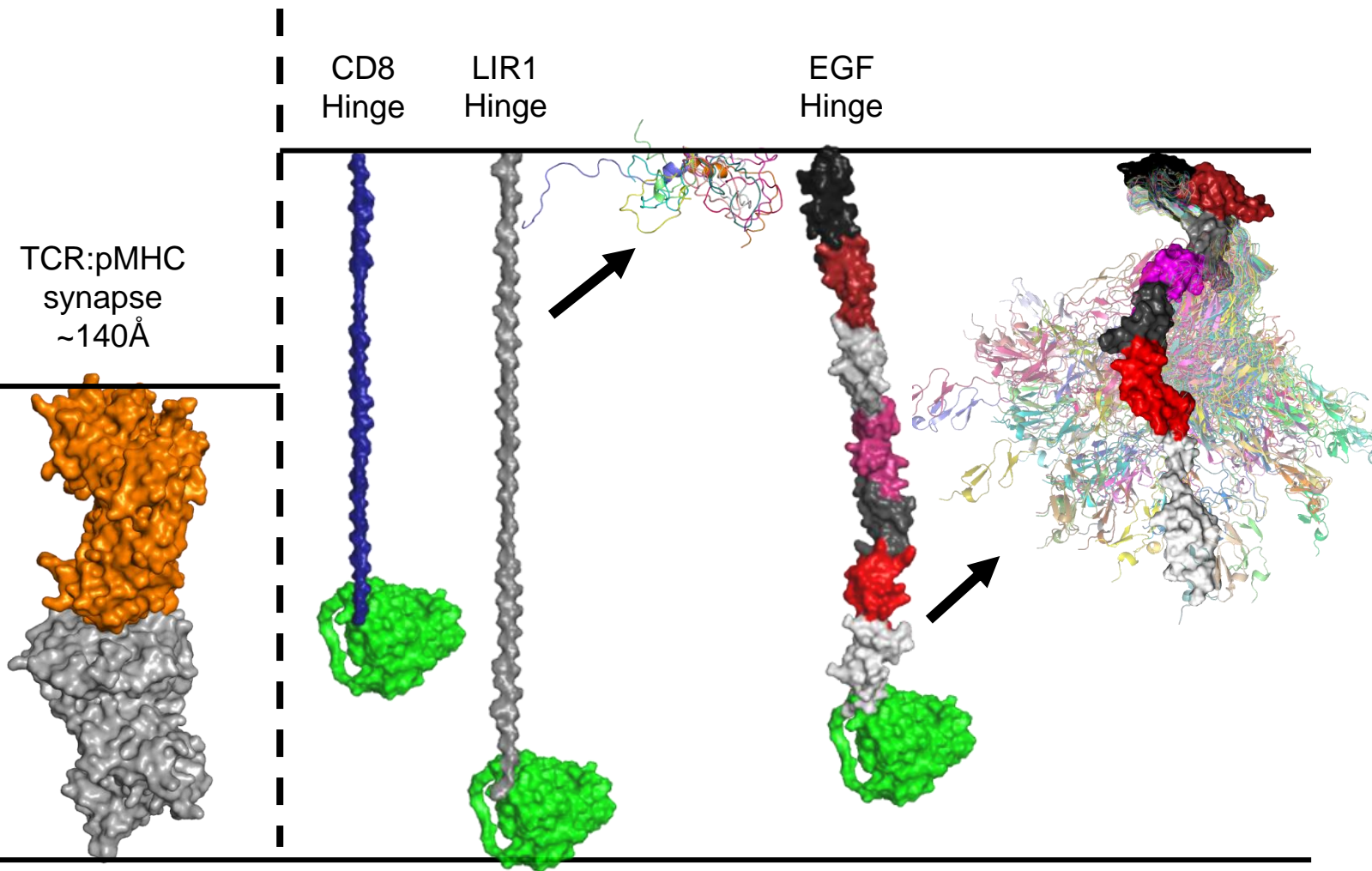


Supplement 1



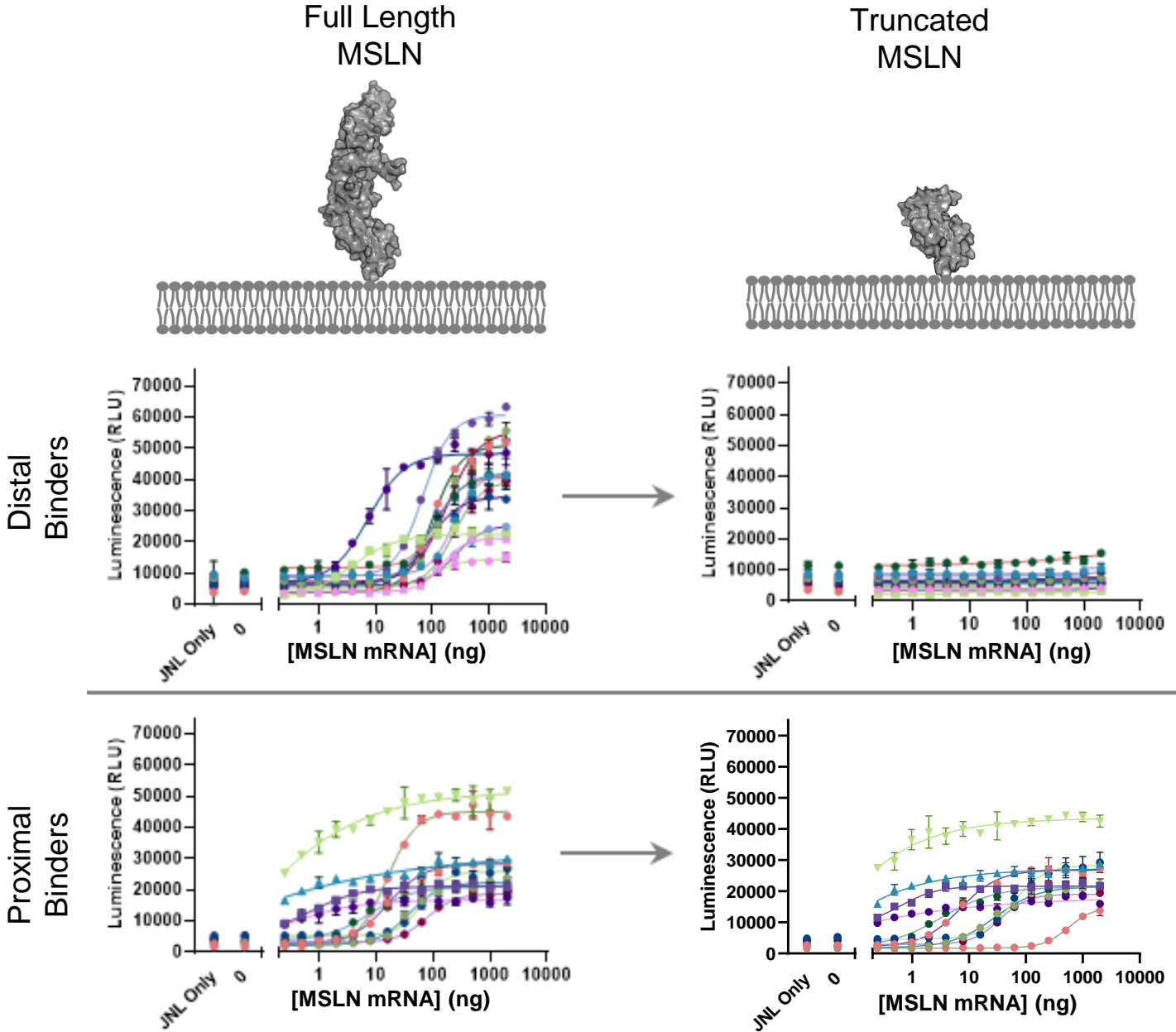
(A) scFv affinities for B-antigens shown in Figure 1. (B) mRNA titration of B-antigens on target cells. (C) Relative expression levels quantified by QIFI.

Supplement 2



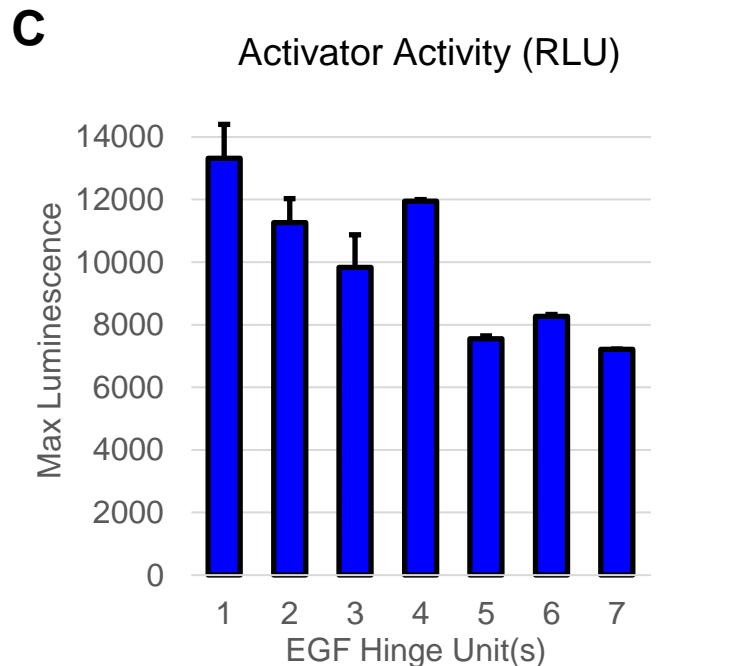
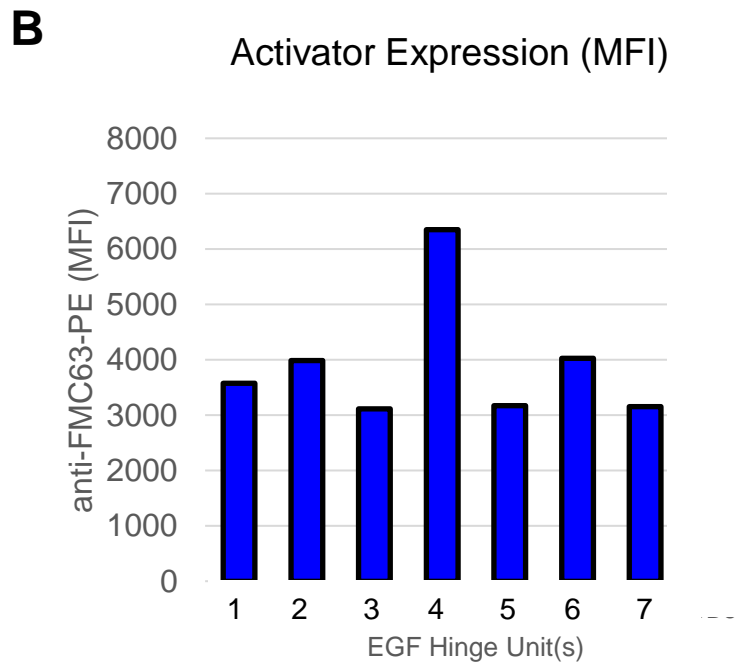
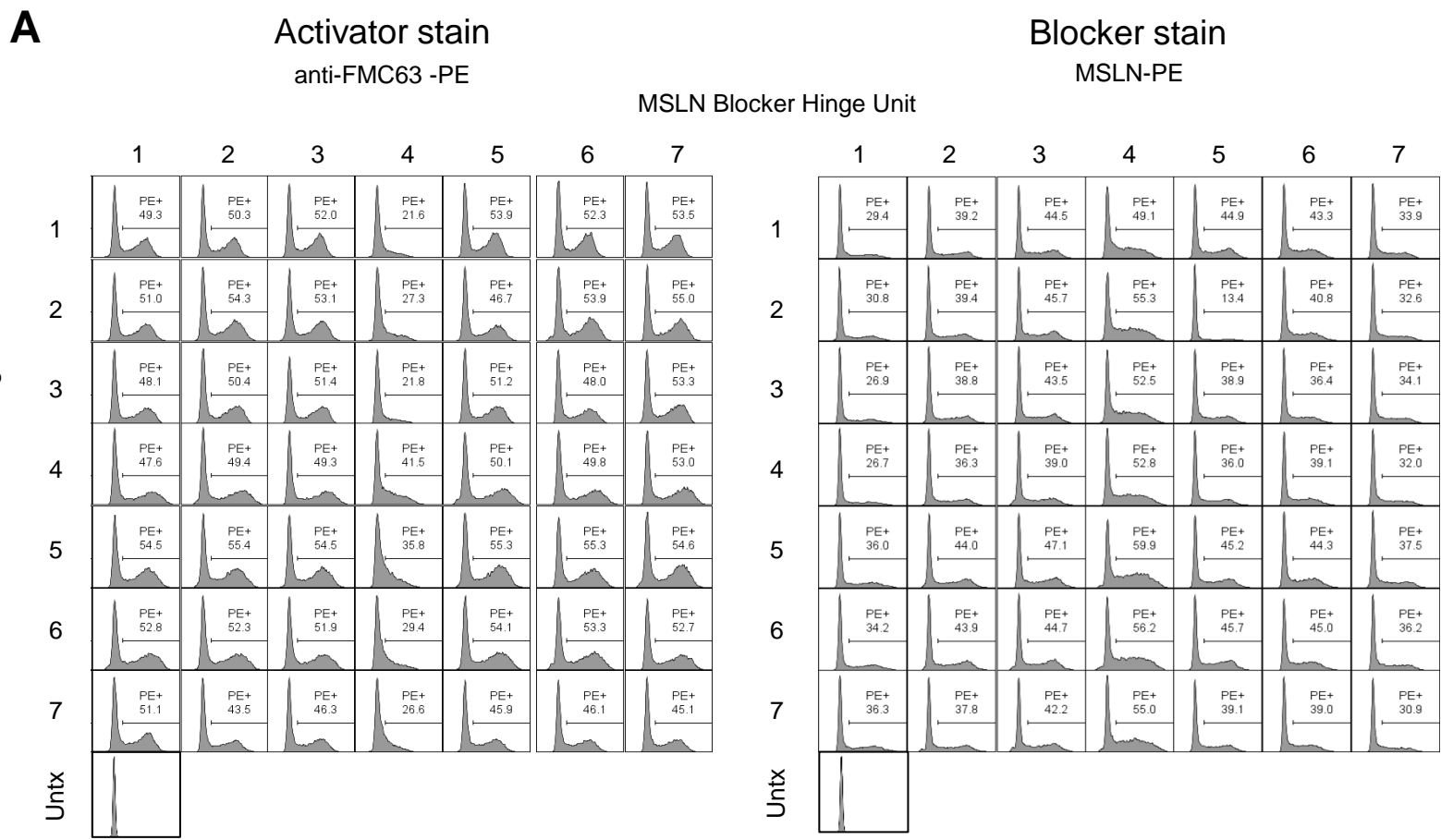
Comparison of Hinge Length and Flexibility relative to TCR:pMHC complex. 100 Monte Carlo simulations for each hinge were overlaid to assess flexibility.

Supplement 3



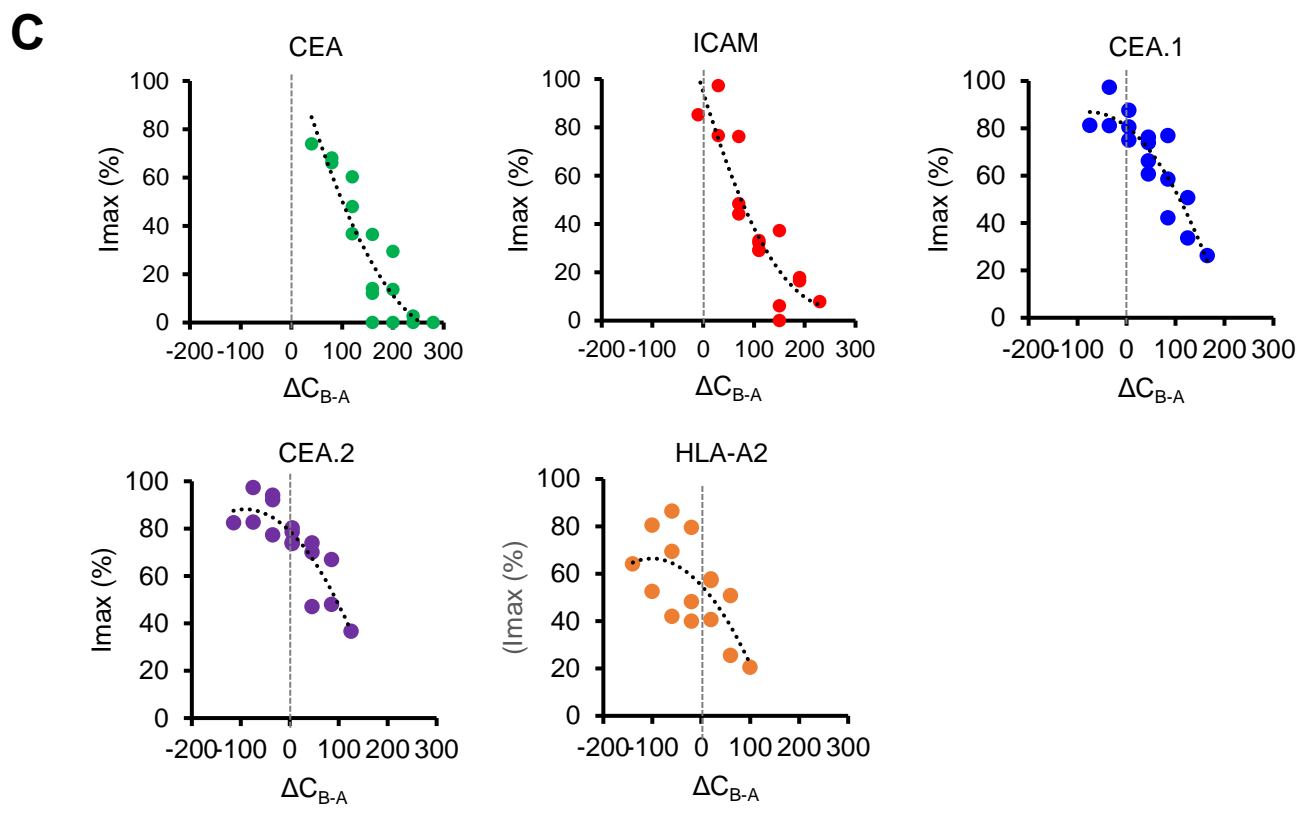
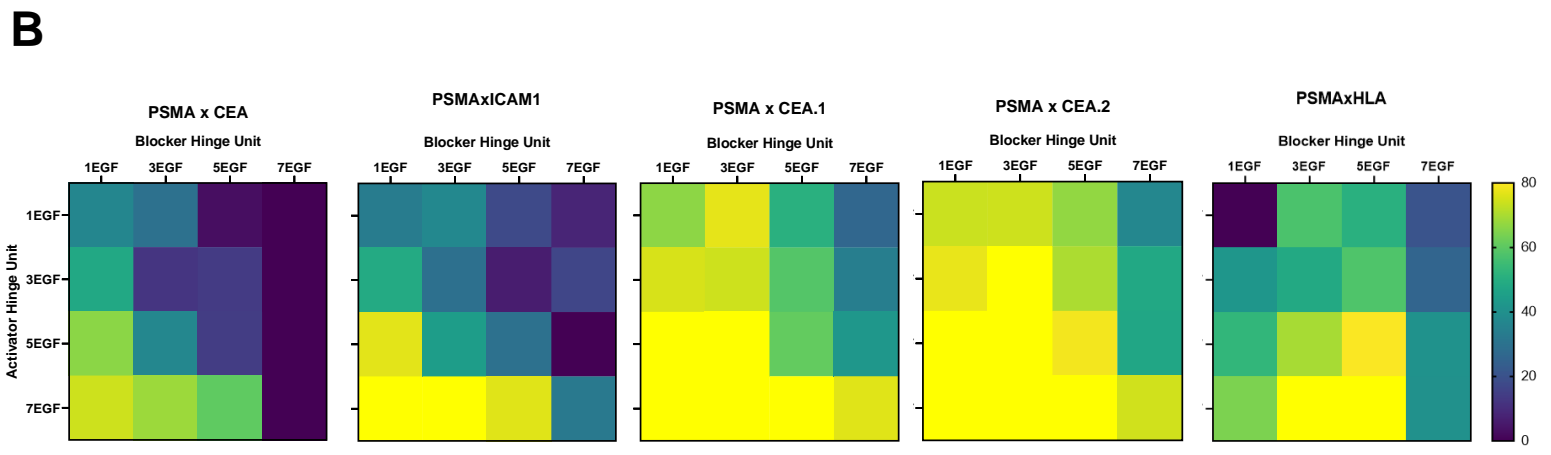
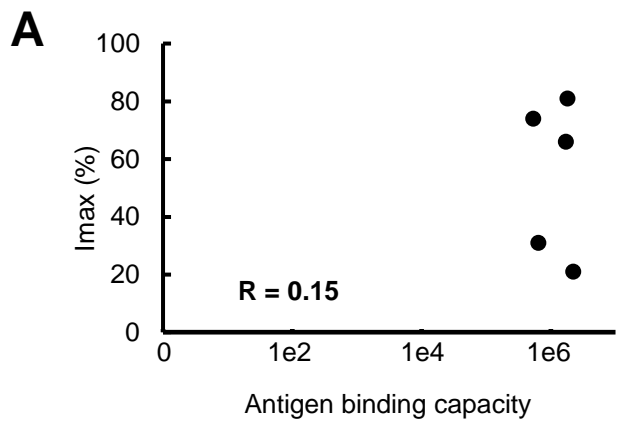
Functional assessment of MSLN CARs responding to full length or truncated MSLN. If a CAR did not respond to truncated form, it was classified as a distal binder

Supplement 4



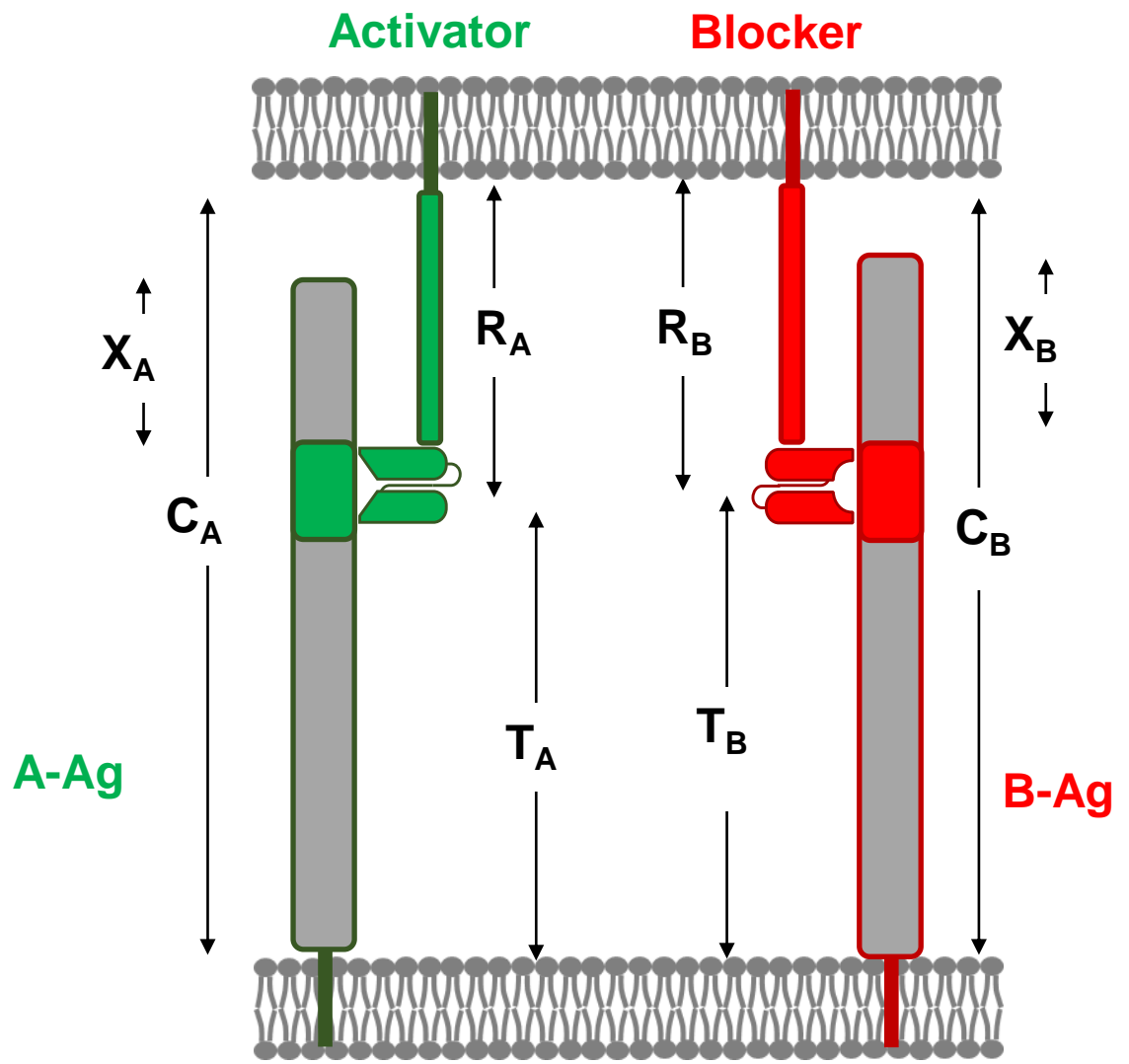
(A) Expression levels CD19 activator/MSLN blocker with EGF hinges. Untx, untransfected. (B) Relative expression levels of activator. (C) Max activation decreases as hinge length decreases independent of expression.

Supplement 5



(A) Antigen density for FLAG-antigens exceeds 500k ABC and is uncorrelated with I_{max} . (B) Blocking profile when expanding the R_A or R_B with EGF modular hinges. (C) Plotting the I_{max} data from (B) versus total estimates of ΔC .

Supplement 6



Full diagram of geometric parameters.