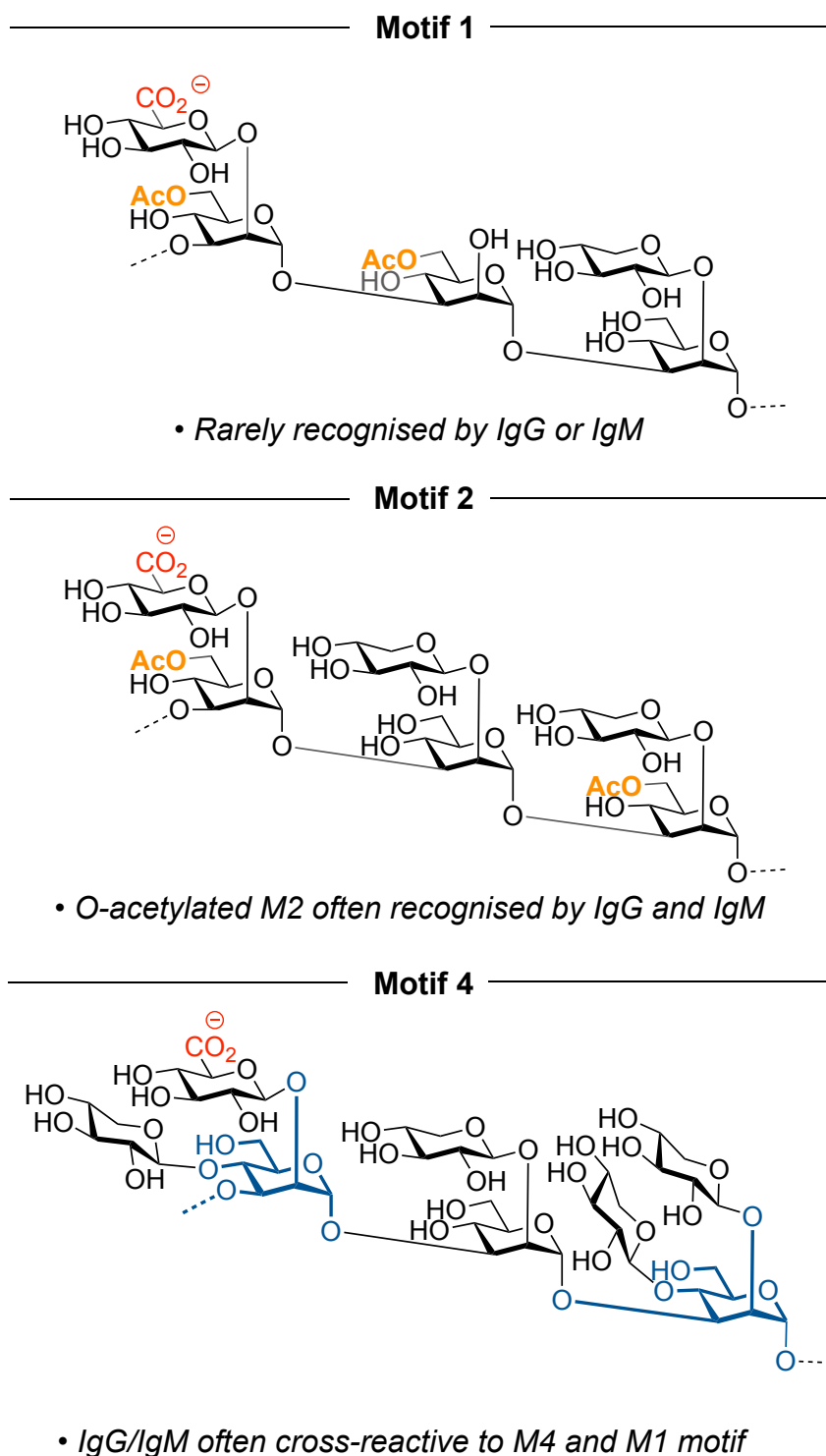
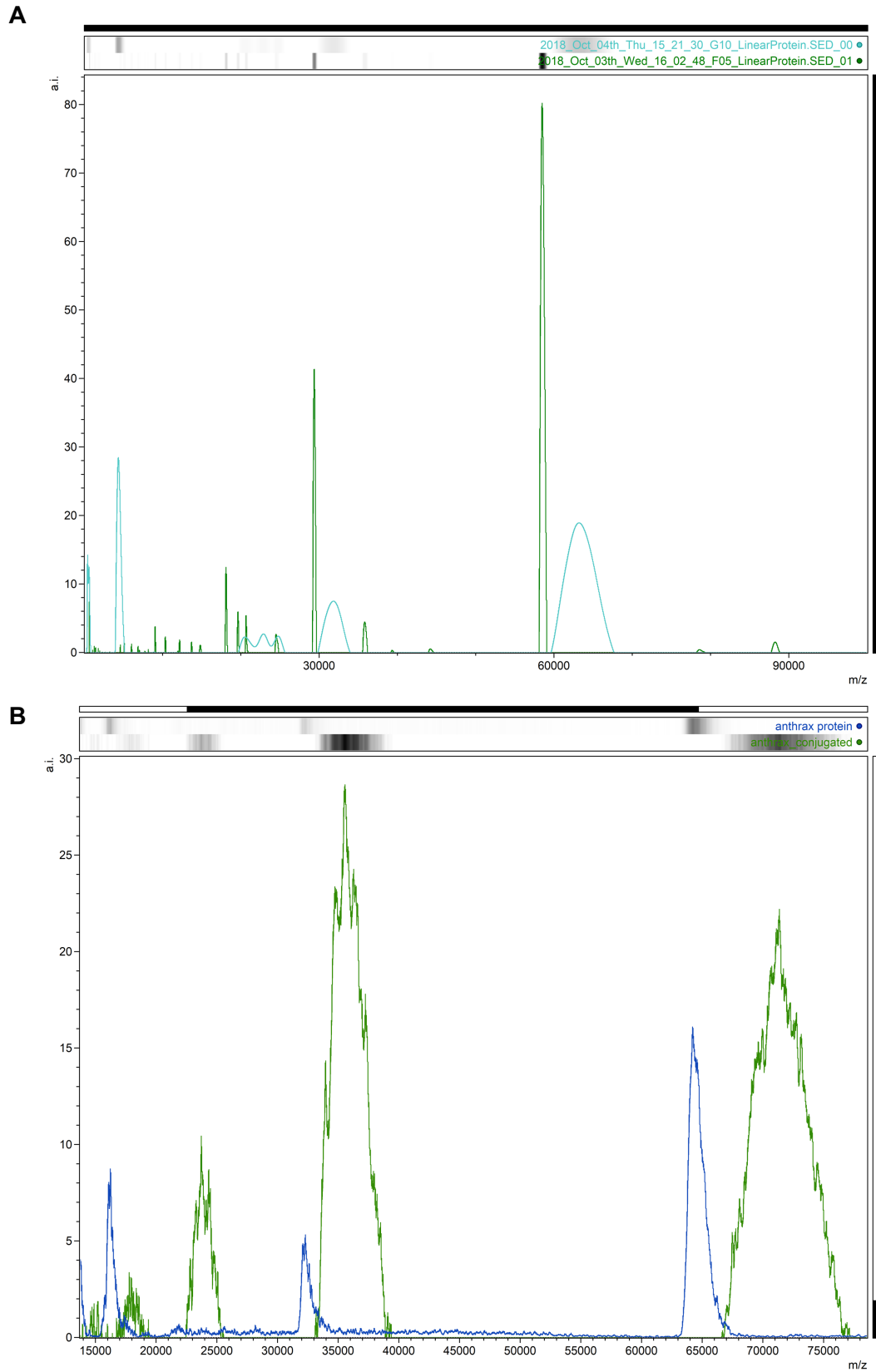


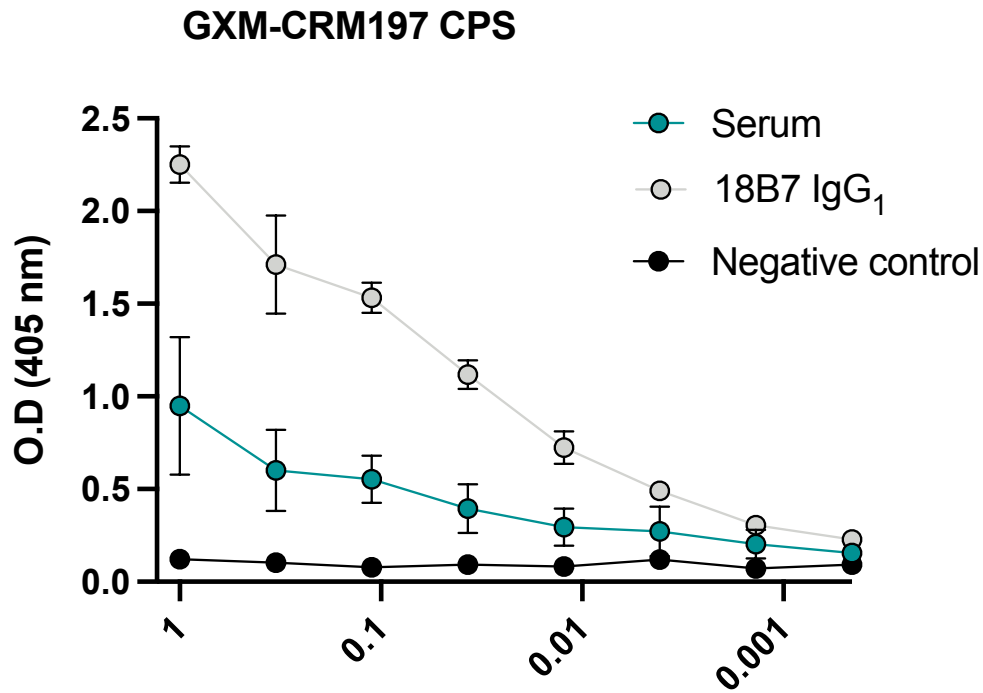
Supporting Figures



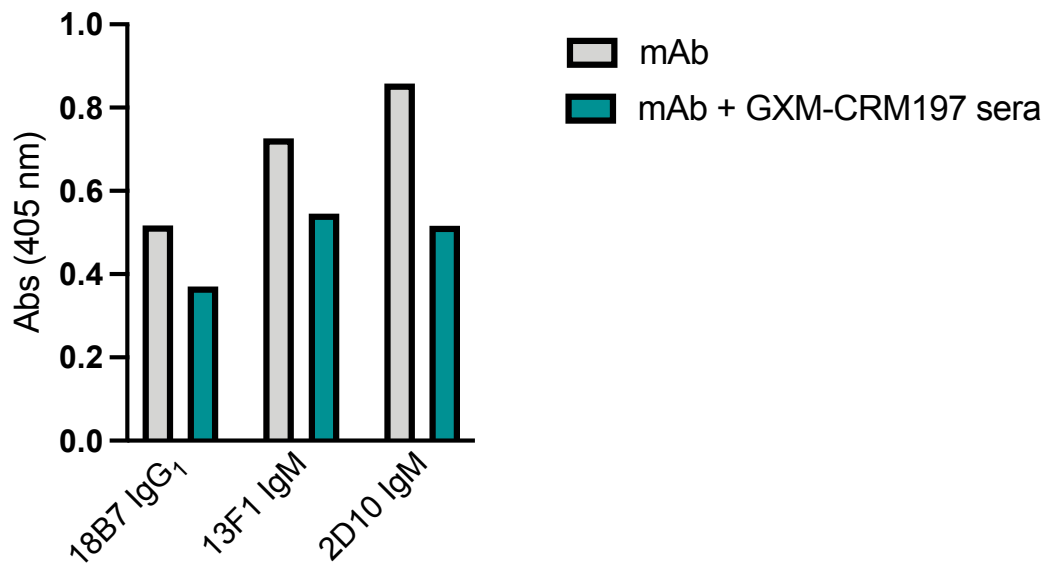
SI Figure 1. GXM motifs. GXM motifs (M1, M2 and M4), demonstrating the antigenic diversity found in the capsule of *C. neoformans*.



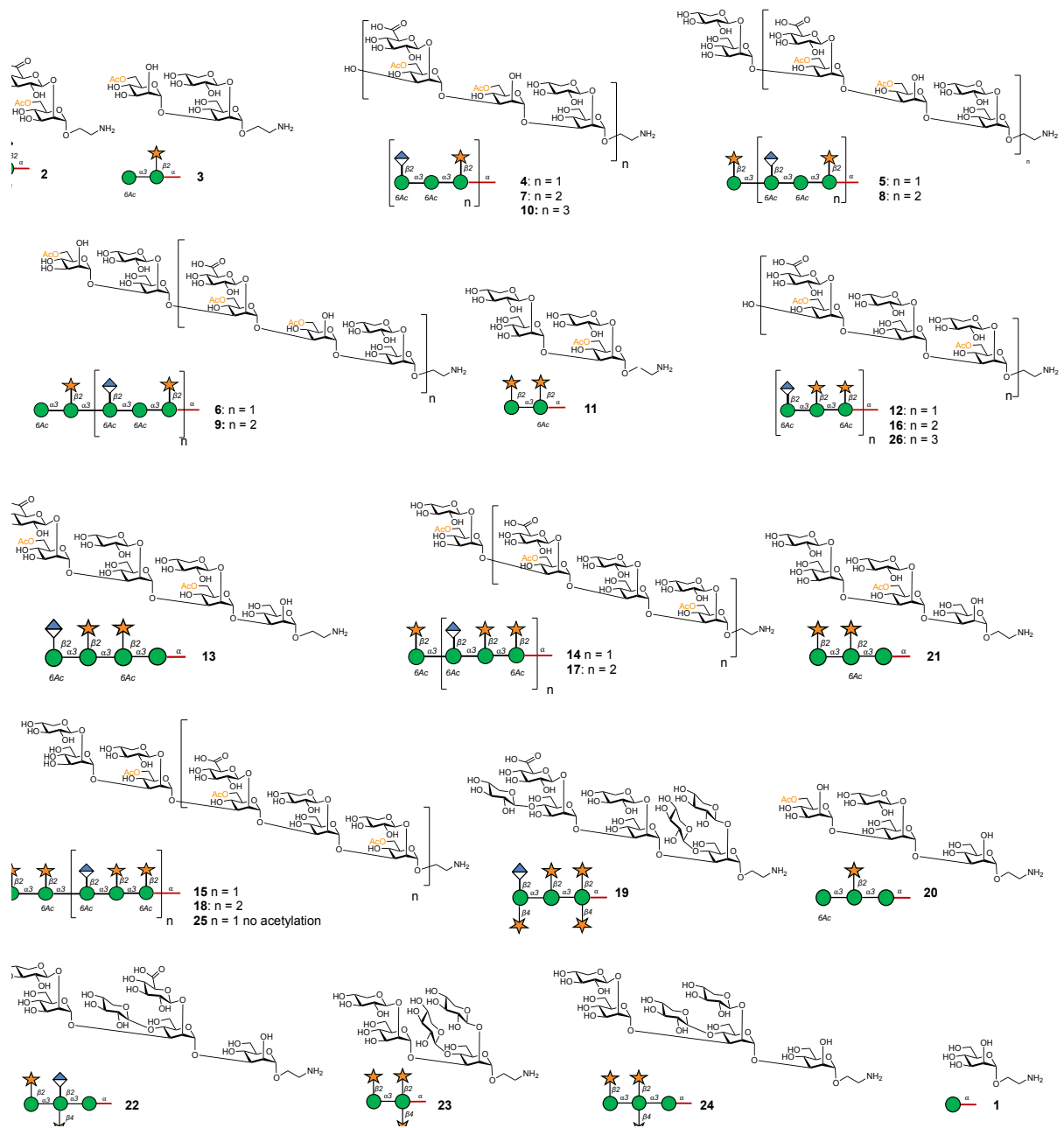
SI Figure 2. MALDI-TOF of glycoconjugates DECA-CRM197 and DECA-PA63. A. DECA-CRM197, shown in green is CRM197 and in blue DECA-CRM197. **b** DECA-PA63 conjugate, shown in green is DECA-PA63 and blue is PA63.



SI Figure 3. ELISA with capsular polysaccharide and DECA-CRM197 conjugates. Serum from DECA-CRM197 was examined for binding to CPS-coated ELISA plates and exhibited a higher affinity. Positive control: mAb 18B7; Negative control: irrelevant mAb.



SI Figure 4. Competition ELISA between mAbs and sera. Serum from DECA-CRM197 mice vs mAbs 18B7 (IgG₁), 13F1 (IgM) and 2D10 (IgM) showed that all three mAbs could compete for the same epitopes.



SI Figure 5. Glucuronoxylomannan glycan microarray library. Full library of the oligosaccharides GXM structures.