

Figure 3a

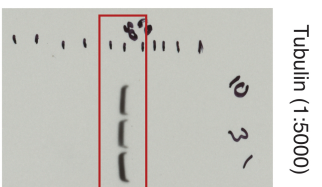
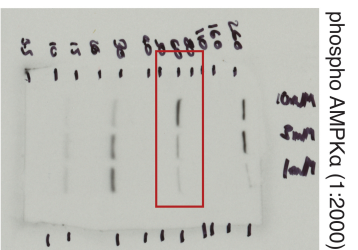
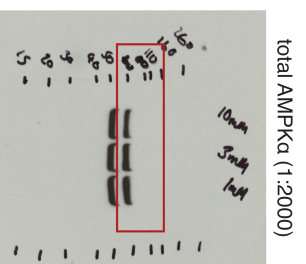
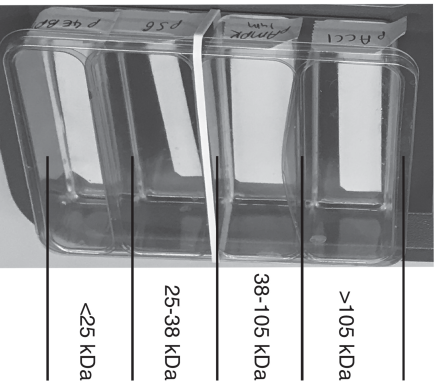


Figure 3f



Membranes were cut into strips as above and incubated with primary Ab. All secondary Abs were used at 1:20000

>105 KDa  
38-105 KDa  
25-38 KDa  
<25 KDa

0-----10-----20

phospho ACC1 (1:2000)

phospho S6 (1:2000)

total ACC1 (1:2000)

phospho AMPKα (1:2000)

total AMPKα (1:2000)

0-----10-----20

Total S6 (1:2000)

phospho 4E-BP1 (1:4000)

total 4E-BP1 (1:4000)

Glut1 (1:2000)

Tubulin (1:5000)