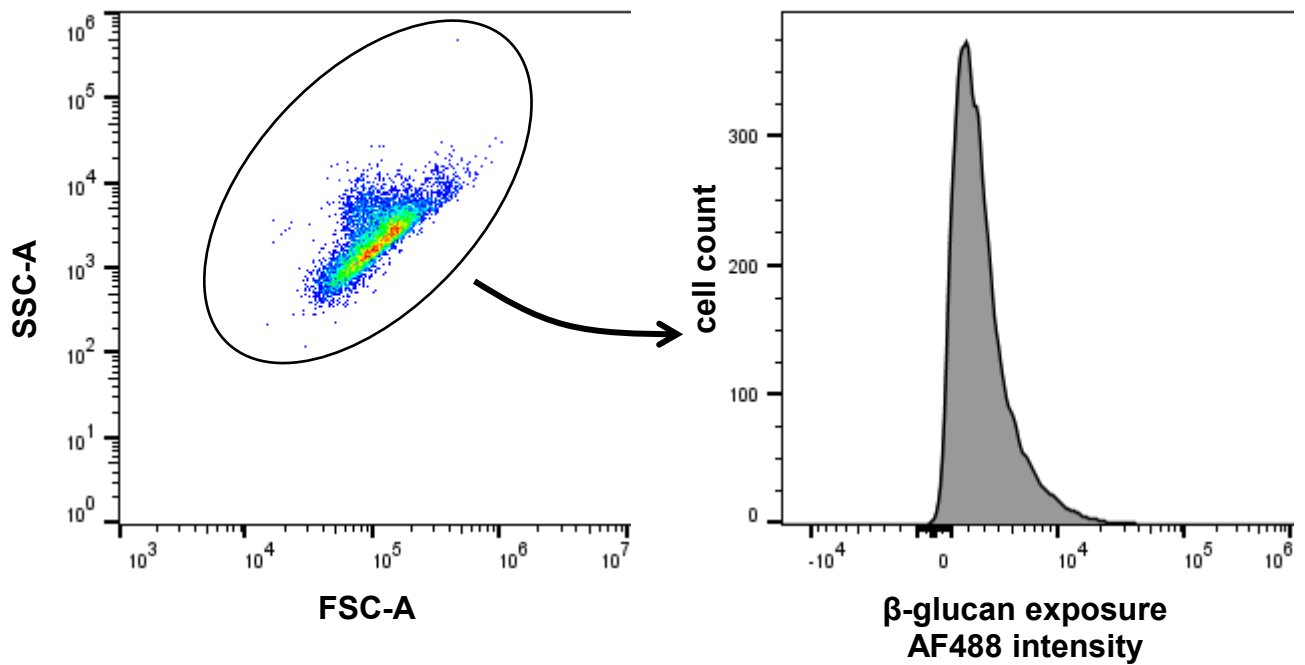


Supplementary Figure 4



Supplementary Figure S4. Gating strategy for flow cytometry experiments. In all flow cytometry experiments, the *C. albicans* populations were gated on the basis of the scatter plot (FSC/SSC). The AF488 intensity of this gated population was then analysed. All the figures in the paper use the same axes as those shown in this figure: these axes were unchanged throughout.