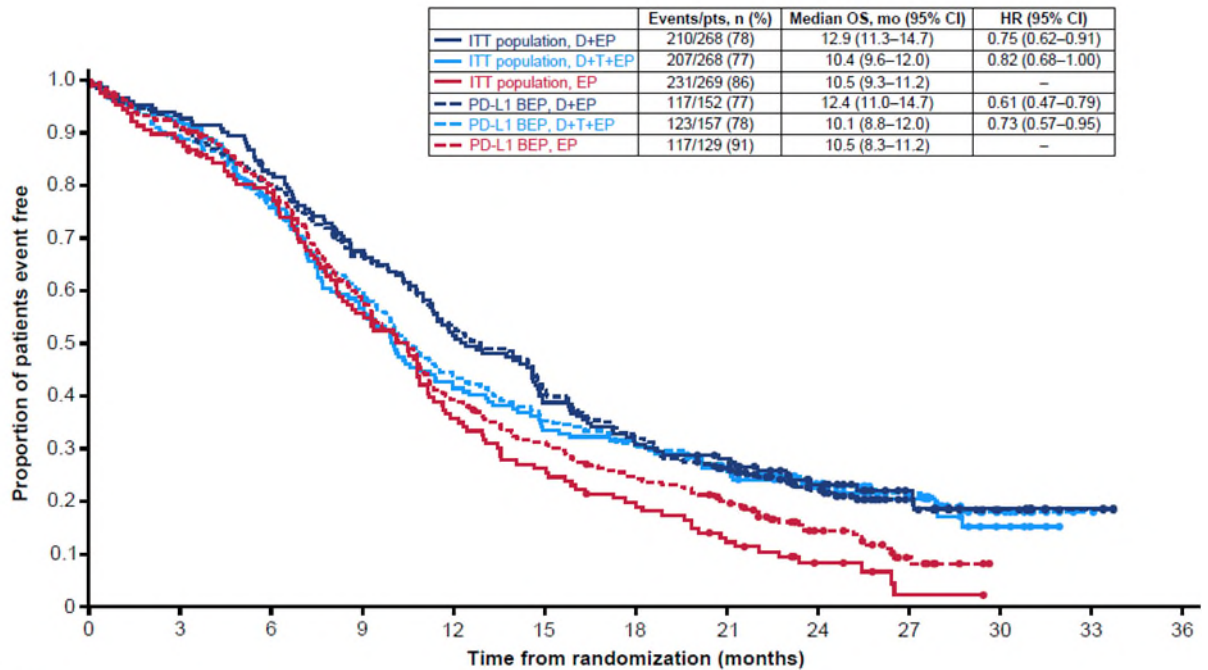


Supplementary Figure S2. Kaplan-Meier analysis of OS in the ITT population and the PD-L1 BEP. BEP, biomarker evaluable population; CI, confidence interval; D, durvalumab; EP, platinum-etoposide; CI, confidence interval; HR, hazard ratio, ITT, intention-to-treat; OS, overall survival; PD-L1, programmed cell death ligand-1; T, tremelimumab; TC, tumor cell.



Number of patients at risk	0	3	6	9	12	15	18	21	24	27	30	33	36
ITT population, D+EP	268	244	214	177	140	109	85	66	41	21	8	2	0
ITT population, D+T+EP	268	238	200	156	114	92	80	67	47	30	11	1	0
ITT population, EP	269	243	212	156	104	82	64	48	24	8	0	0	0
PD-L1 BEP, D+EP	152	142	124	101	77	58	46	40	25	13	6	2	0
PD-L1 BEP, D+T+EP	157	145	119	87	63	51	47	37	28	16	5	0	0
PD-L1 BEP, EP	129	113	99	70	45	33	24	14	6	1	0	0	0