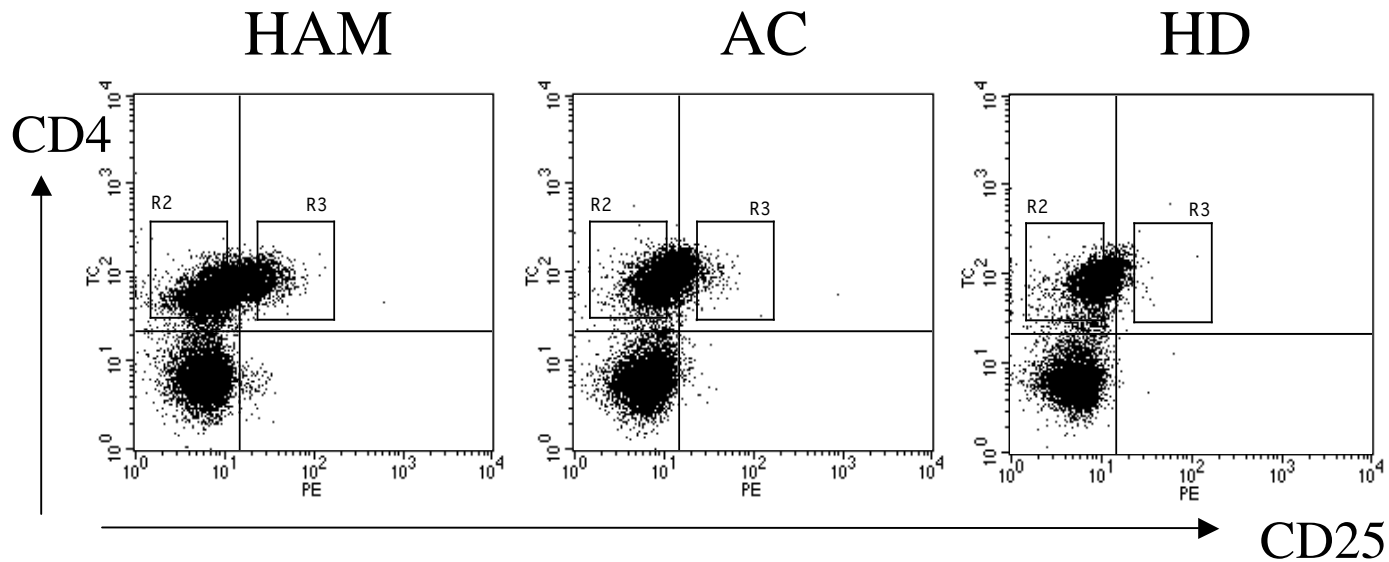


Supplemental Figure 1



Supplemental Figure 1

FACS profiles of CD4⁺CD25^{+/-} T cell populations in patients and controls. The number of CD4⁺CD25⁺ T cells was increased in HAM/TSP (19.52%) as compared to AC (5.3%), or HD (2.19%). The R2 gate defining the CD4⁺CD25⁻ T cells and the R3 gate defining the CD4⁺CD25⁺ for HAM/TSP and AC patients were selected based on the CD25^{negative} and CD25^{high} expression in healthy donors. The R2 and R3 gates were used for FACS sorting in Figures 1–4, and table 1. AC, asymptomatic HTLV-I infected individuals; HAM, HAM/TSP patients; HD; healthy donors.