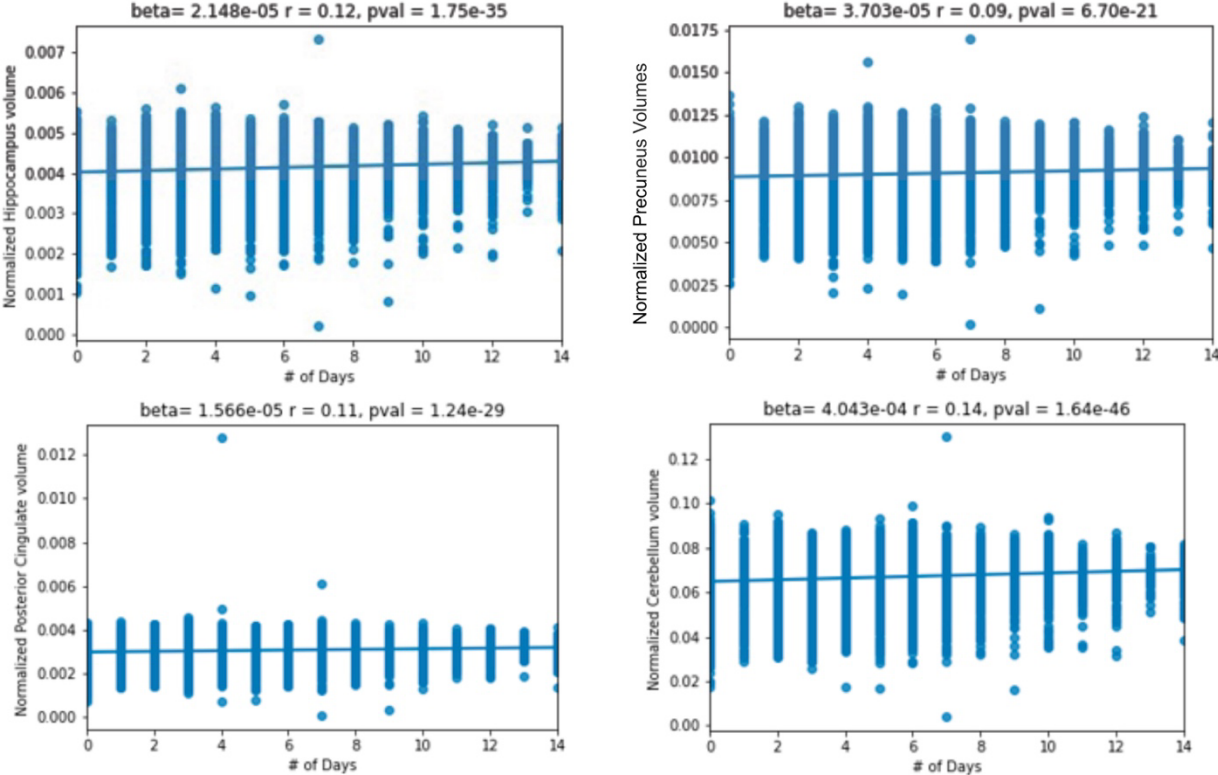
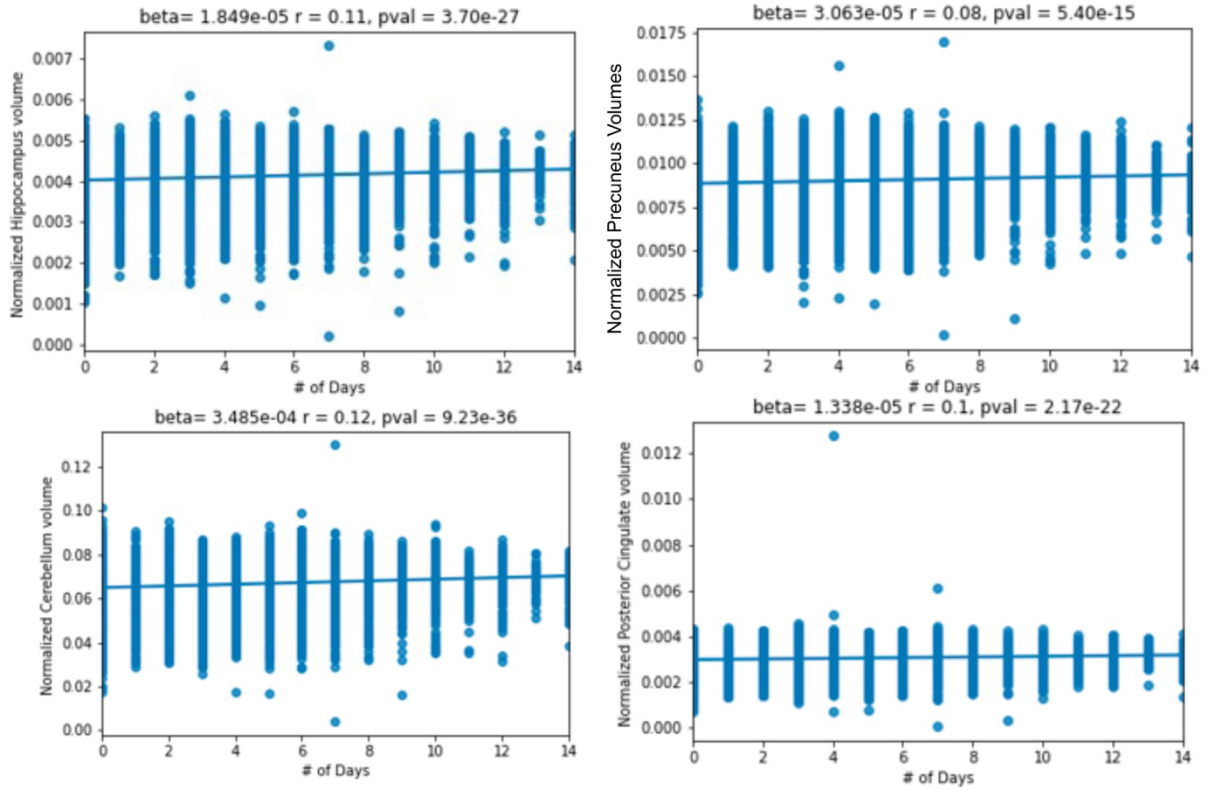


# Supplementary Material

## Exercise-Related Physical Activity Relates to Brain Volumes in 10,125 Individuals



**Supplementary Figure 1.** Number of days of exercise and normalized brain volumes adjusting for age and sex.



**Supplementary Figure 2.** Number of days of exercise and normalized brain volumes adjusting for age, sex, type 2 diabetes, and hypertension.