

**Treatment Outcomes With Standard of Care in Relapsed/Refractory Diffuse Large
B-cell Lymphoma: Real-world Data Analysis**

Andrew Ip¹, Alex Mutebi², Tongsheng Wang², Monika Jun², Anupama Kalsekar²,
Fernando Rivas Navarro², Anthony Wang³, Rajesh Kamalakar³, Mariana Sacchi², Brian
Elliott²

¹Hackensack Meridian Health, Hackensack University Medical Center, Hackensack, NJ,
USA ²Genmab US, Inc., Plainsboro, NJ, USA

³AbbVie, Inc., North Chicago, IL, USA

Correspondence:

Alex Mutebi

Genmab US, Inc.

777 Scudders Mill Road

Plainsboro, NJ, 08536

Phone: (609) 366-0237

almu@genmab.com

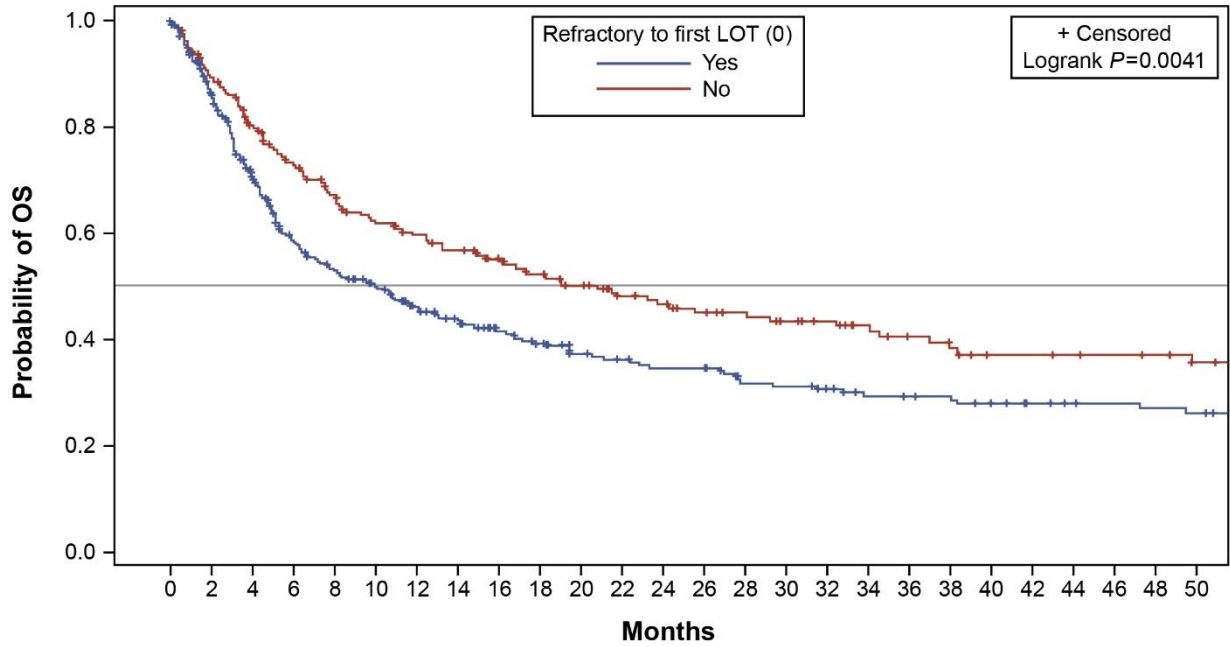
Supplementary Data

Regimens of Interest

Regimens of interest included (but were not limited to) the following:

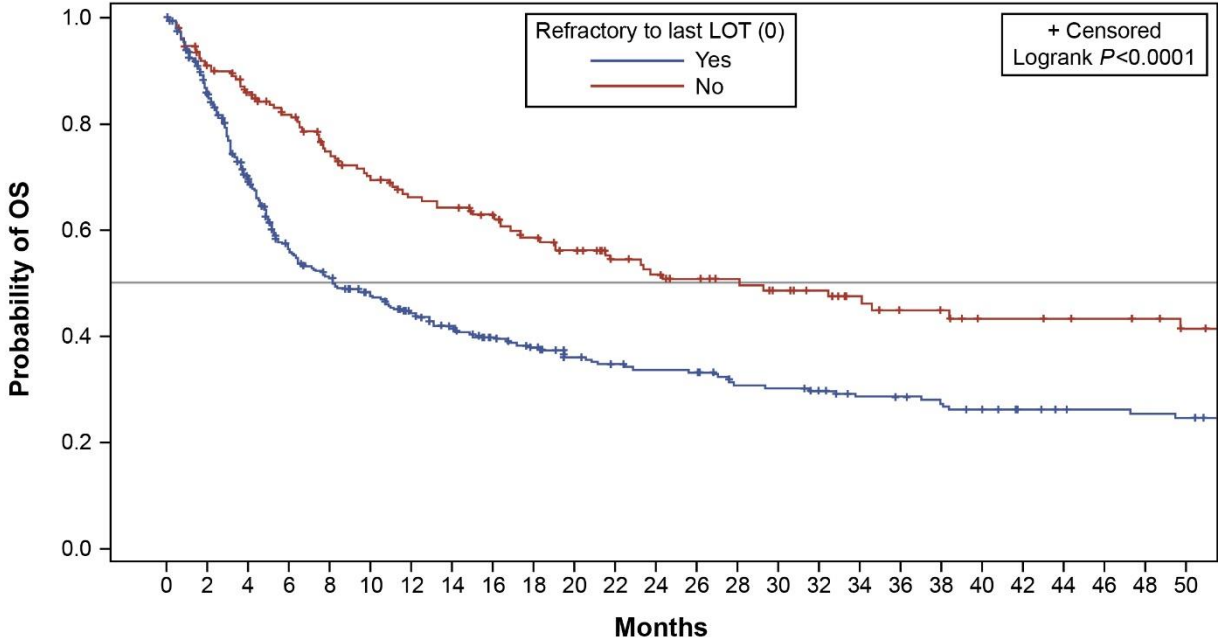
- Gemcitabine, oxaliplatin ± rituximab (R-GemOx)
- Cyclophosphamide, etoposide, prednisone, procarbazine ± rituximab (R-CEPP)
- Cyclophosphamide, etoposide, vincristine, prednisone ± rituximab (R-CEOP)
- Dose-adjusted etoposide, doxorubicin, cyclophosphamide, vincristine, prednisone ± rituximab (DA-EPOCH-R)
- Gemcitabine, dexamethasone, cisplatin ± rituximab (R-GDP)
- Gemcitabine, carboplatin, dexamethasone ± rituximab (R-GCD)
- Gemcitabine, vinorelbine ± rituximab (R-GN)
- Rituximab, ifosfamide, carboplatin and etoposide (RICE)
- Rituximab, dexamethasone, cytarabine, cisplatin (R-DHAP)
- Brentuximab vedotin [for CD30+ disease]
- Bendamustine ± rituximab (BR)
- Lenalidomide ± rituximab
- Lenalidomide (other than maintenance)
- Rituximab (other than maintenance)
- Obinutuzumab (other than maintenance)

Supplementary Figure 1. Kaplan-Meier plot for OS by primary refractory status. CI, confidence interval; LOTs, lines of therapy; OS, overall survival.



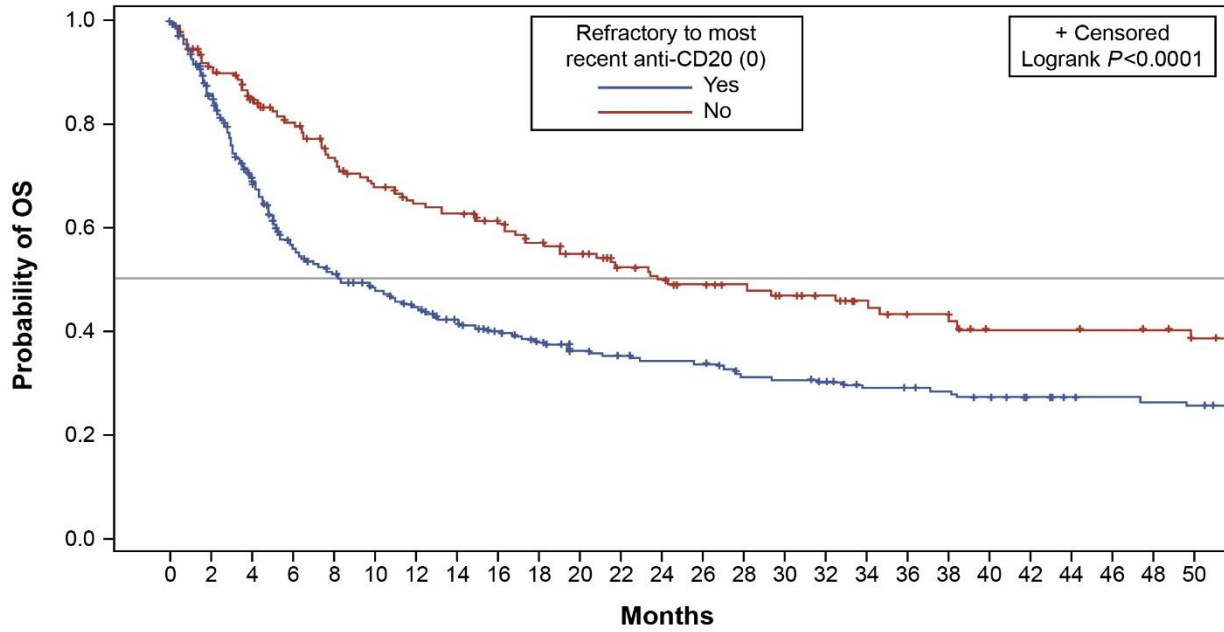
Primary refractory	Total at risk	# of events	Median	Lower 95% CI limit	Upper 95% CI limit
Yes	355	213	9.98	6.74	13.02
No	218	120	20.86	13.32	32.46

Supplementary Figure 2. Kaplan-Meier plot for OS by refractoriness to last LOT. CI, confidence interval; LOTs, lines of therapy; OS, overall survival.



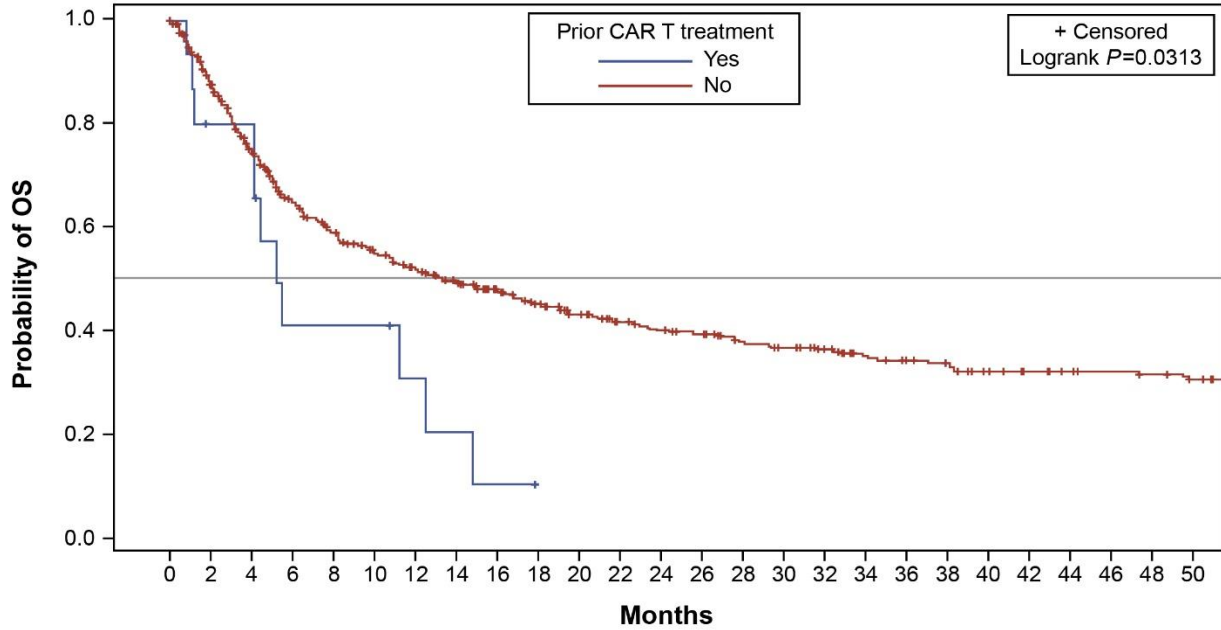
Refractory to last LOT	Total at risk	# of events	Median	Lower 95% CI limit	Upper 95% CI limit
Yes	393	244	8.17	6.21	11.6
No	180	89	28.1	18.28	52

Supplementary Figure 3. Kaplan-Meier plot for OS by refractoriness to last anti-CD20–containing regimen. CI, confidence interval; LOTs, lines of therapy; OS, overall survival.



Refractory to most recent anti-CD20	Total at risk	# of events	Median	Lower 95% CI limit	Upper 95% CI limit
Yes	388	238	8.23	6.28	11.93
No	185	95	23.77	17.36	38.38

Supplementary Figure 4. Kaplan-Meier plot for OS by prior CAR T exposure. CAR T, chimeric antigen receptor T cell; CI, confidence interval; LOTs, lines of therapy; OS, overall survival.



Prior CAR T treatment	Total at risk	# of events	Median	Lower 95% CI limit	Upper 95% CI limit
No	557	322	13.29	10.45	17.42
Yes	16	11	5.22	1.16	12.5