

APPENDIX

Exhibit S-1: Trends in mean number of home care and nursing home workers per 1,000 people with disabilities by state, 2009-20

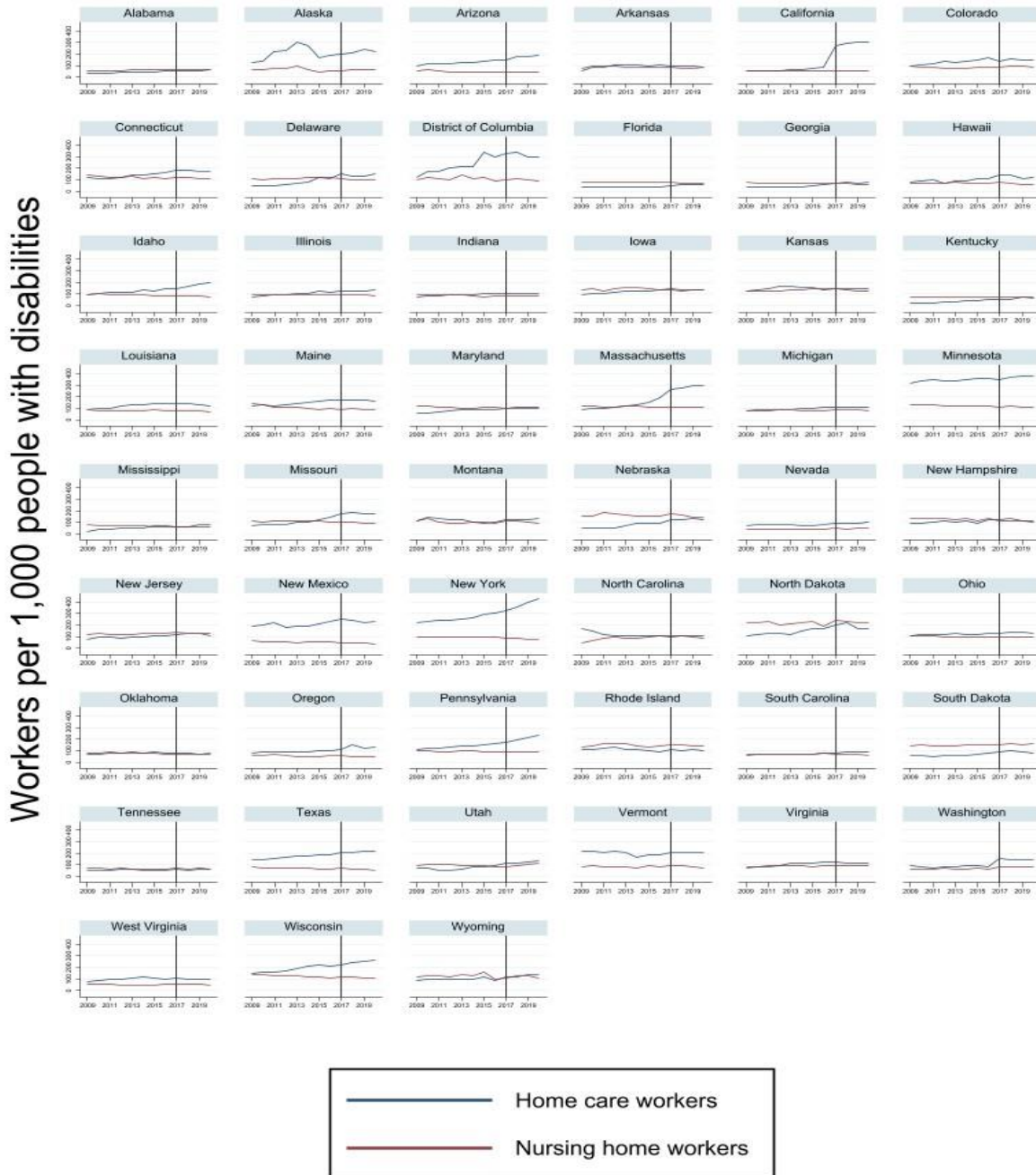
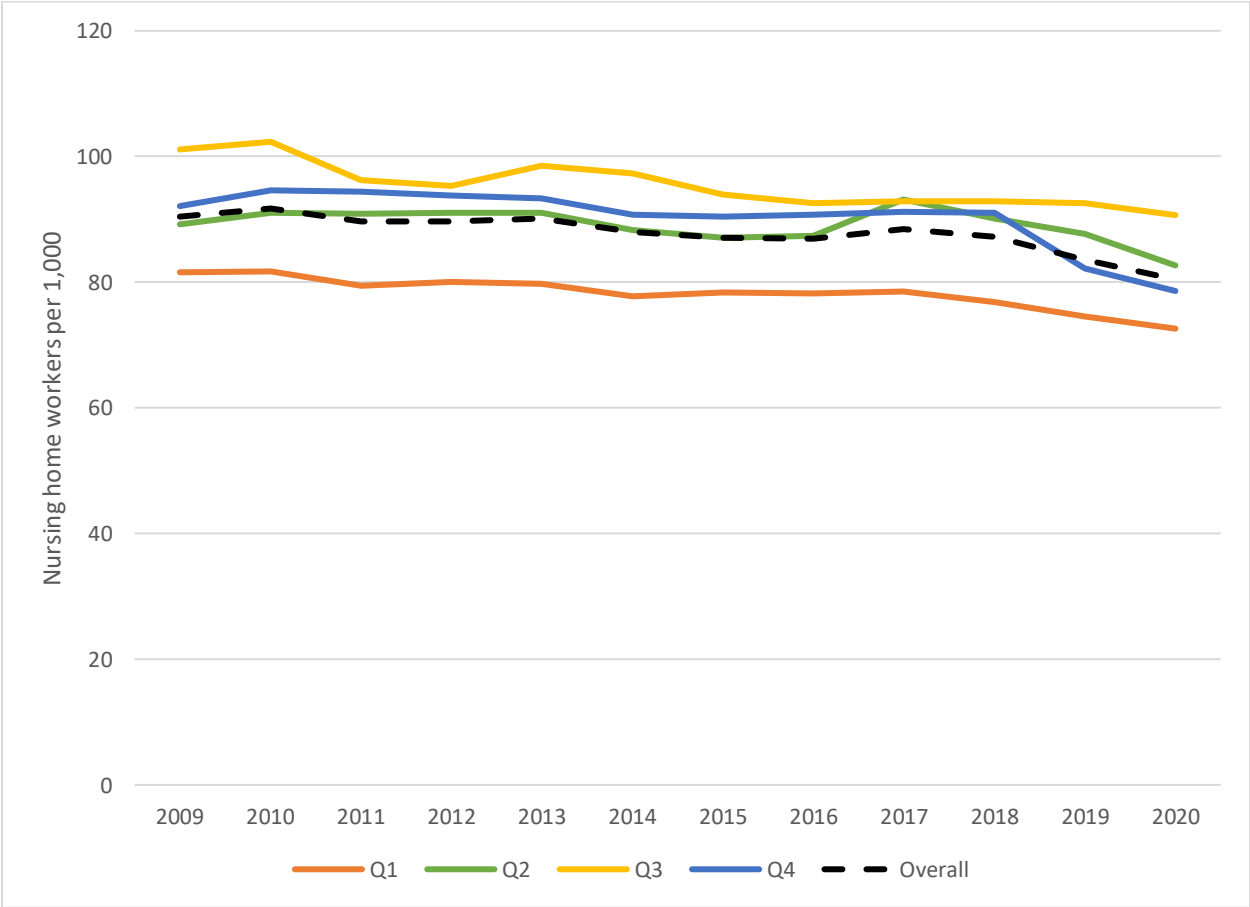


Exhibit S-2: Trends in mean number of nursing home workers per 1,000 people with disabilities, by quartiles of baseline (2009) distribution of workers per 1,000 people with disabilities, 2009-20



SOURCES Occupation Employment and Wage Statistics program and American Community Survey, 2009-20. **NOTES** None of the tests for differences in slopes by quartile were statistically significant. Change in overall nursing home workforce size was statistically significant (slope=-0.76; p < 0.001).

Exhibit S-3: Trends in mean number of home care and nursing home workers per 1,000 people with disabilities, by quartiles of baseline (2009) distribution of workers per 1,000 people with disabilities, 2008-16 only.

