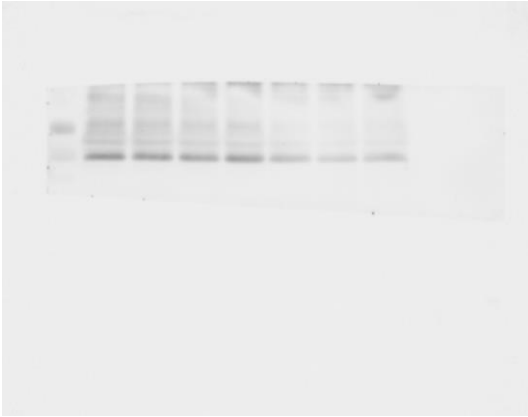
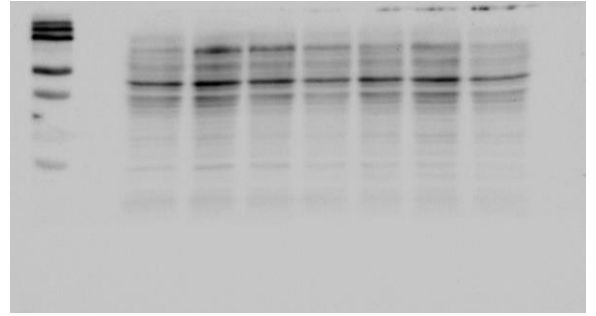


Supplemental Fig.1

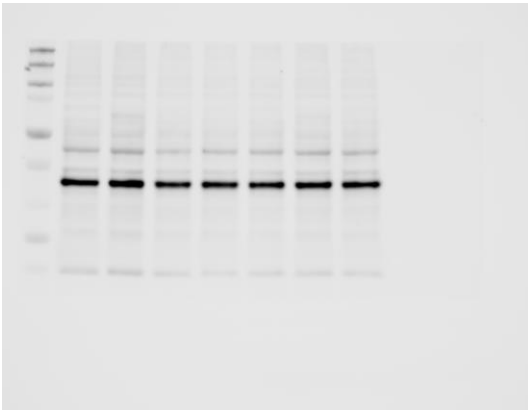
WB image (Fig. 1D) for cleaved caspase3 in MIA-Paca2 was cropped from this image



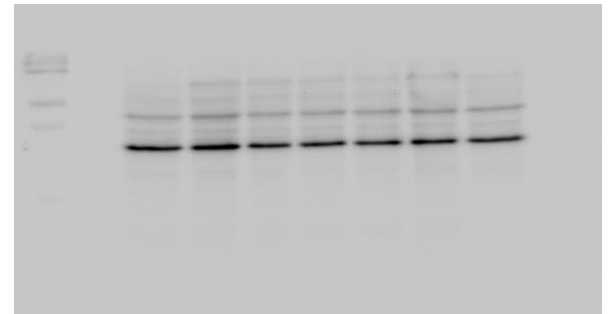
WB image (Fig. 1D) for cleaved caspase3 in Suit-2 was cropped from this image



WB image (Fig. 1D) for caspase3 in MIA-Paca2 was cropped from this image

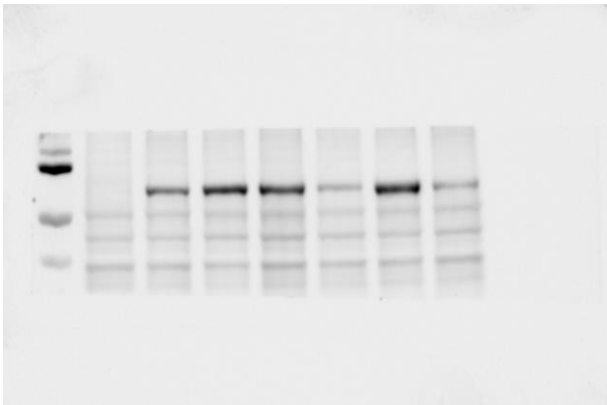


WB image (Fig. 1D) for caspase3 in Suit-2 was cropped from this image

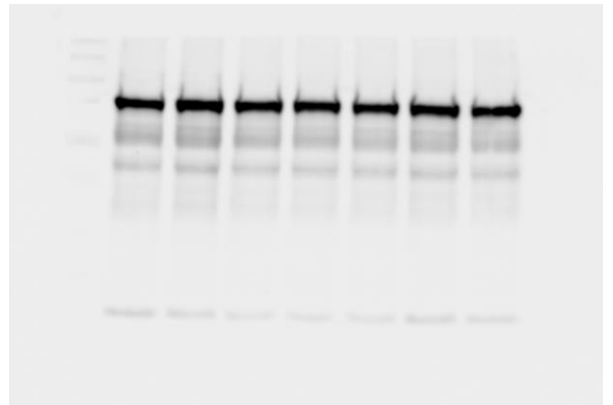


Supplemental Fig.2

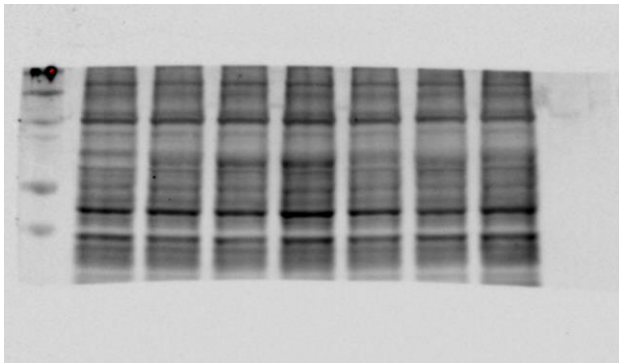
WB image (Fig. 3A) for pRIP3 (Ser166)
was cropped from this image



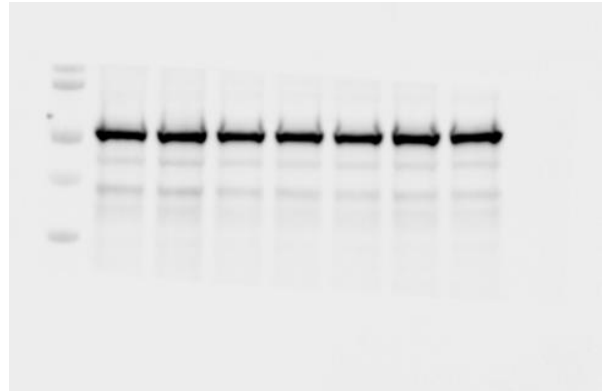
WB image (Fig. 3A) for RIP
was cropped from this image



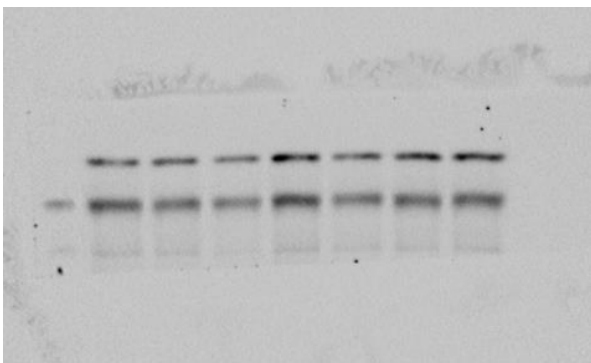
WB image (Fig. 3A) for pMLKL(Ser358)
was cropped from this image



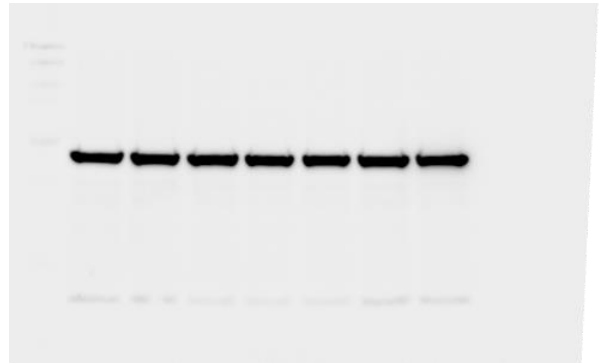
WB image (Fig. 3A) for MLKL
was cropped from this image



WB image (Fig. 3A) for GPX4
was cropped from this image

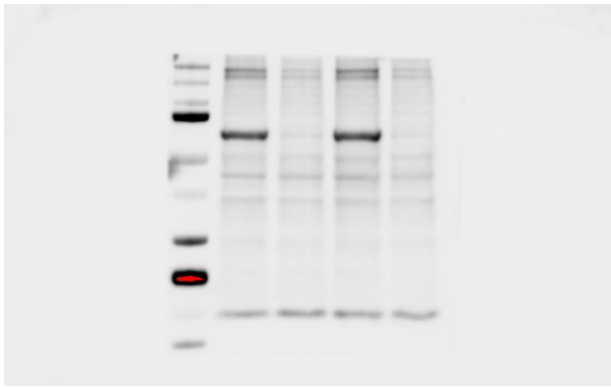


WB image (Fig. 3A) for β actin
was cropped from this image

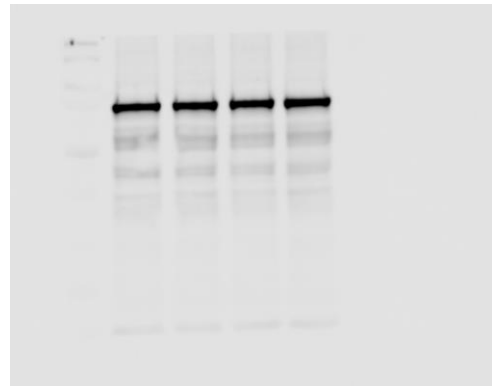


Supplemental Fig.2 continued

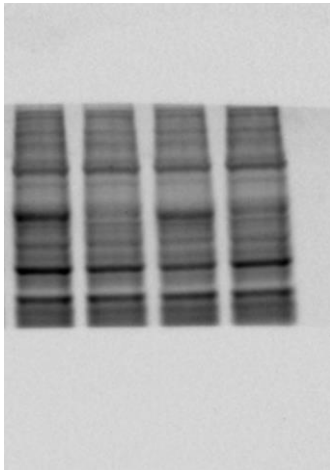
WB image (Fig. 3B) for pRIP3 (Ser166)
was cropped from this image



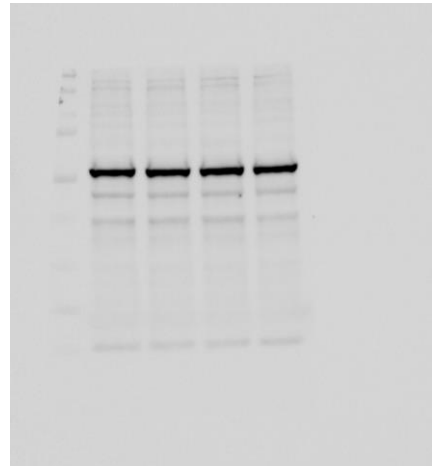
WB image (Fig. 3B) for RIP
was cropped from this image



WB image (Fig. 3B) for pMLKL(Ser358)
was cropped from this image



WB image (Fig. 3B) for MLKL
was cropped from this image



WB image (Fig. 3B) for β actin
was cropped from this image

