

This is an electronic appendix to the paper by Hurst & Merchant 2001 High guanine–cytosine content is not an adaptation to high temperature: a comparative analysis amongst prokaryotes. *Proc. R. Soc. Lond. B* **268**, 493–497.

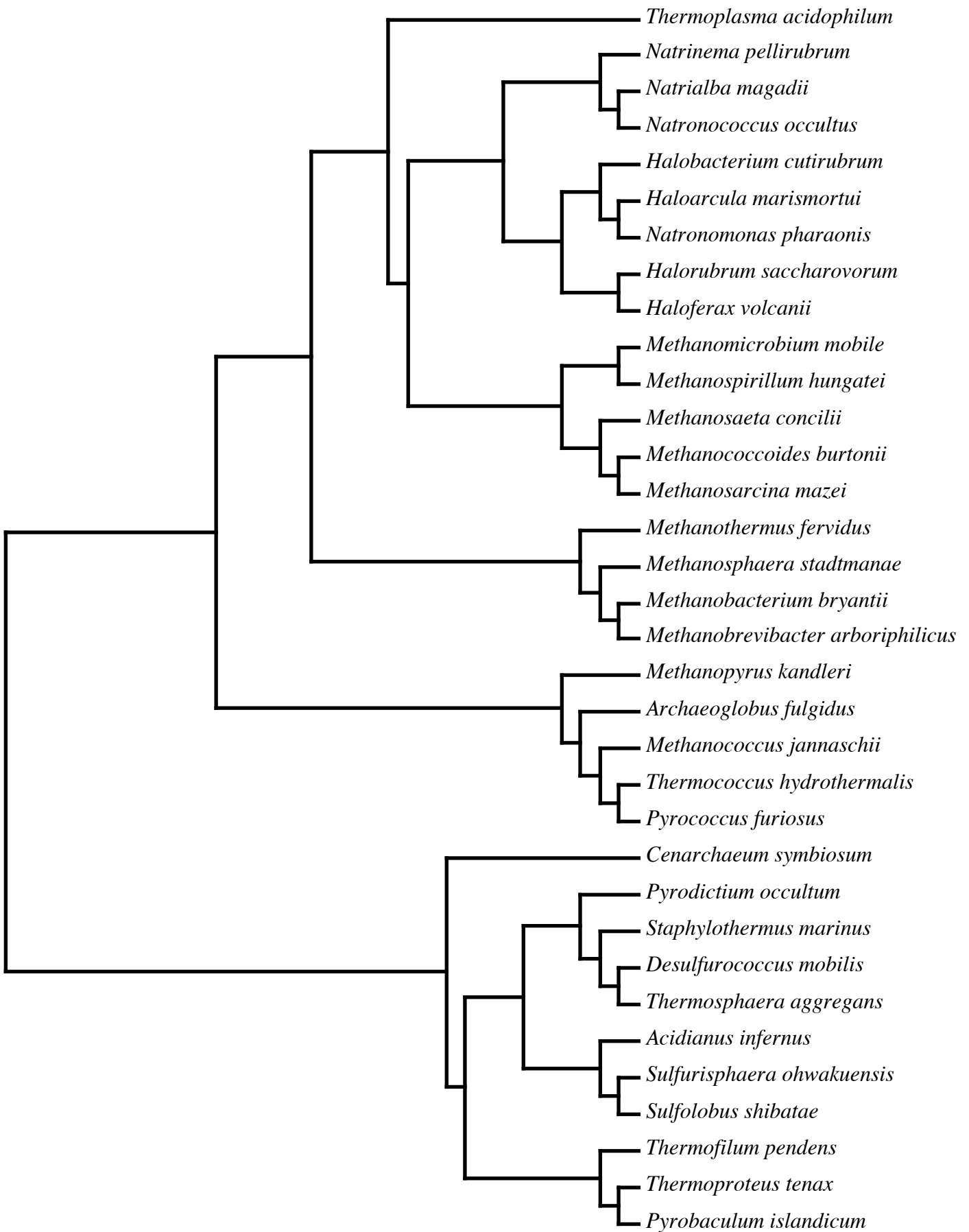
Electronic appendices are refereed with the text. However, no attempt has been made to impose a uniform editorial style on the electronic appendices.

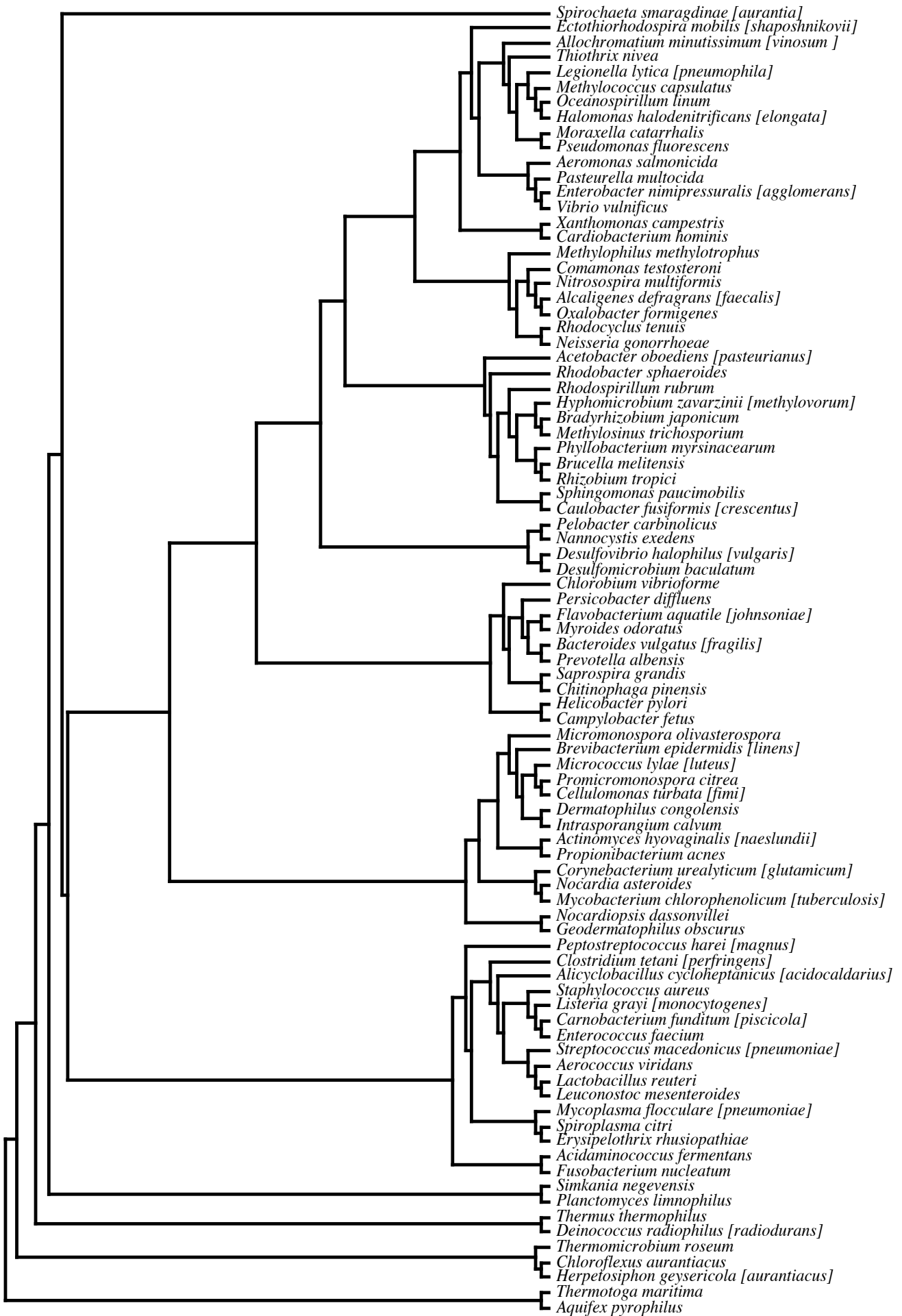
Appendix A

Figure legends for Online supplementary figures:

[Online Figure 1](#). The phylogeny of the species of *Archea* used in the analysis of GC content of coding DNA and genomic GC.

[Online Figure 2](#). The phylogeny of the species of *Eubacteria* used in the analysis of GC content of coding DNA and genomic GC. Within the eubacterial phylogeny each genus is represented only once. We could therefore augment our dataset by including data from an alternative species within the same genus where no data, or limited data, existed for the one phylogenetically defined. These are indicated on the figure by a genus followed by two species names, one in square brackets. The species name not in square brackets is the one that is phylogenetically defined. The one in square brackets is the one for which data was employed in the augmented data set analysis.





Online fig2 for OOPB0710