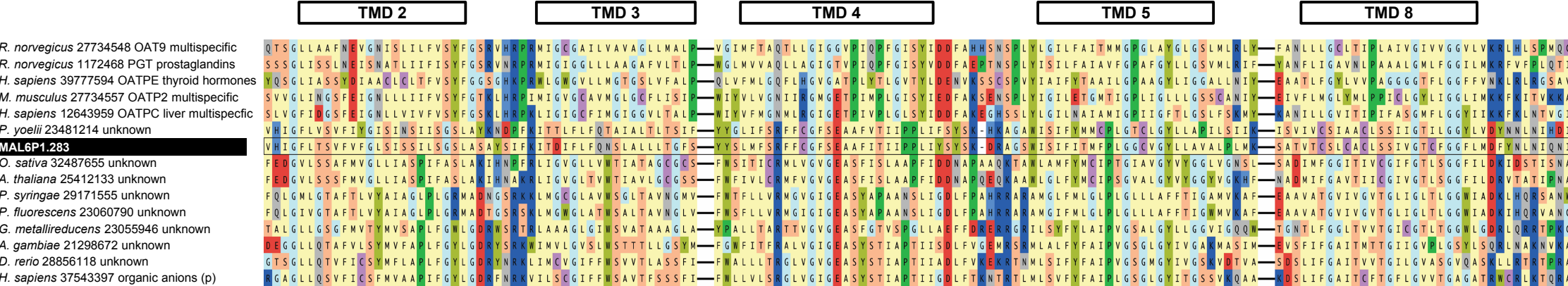
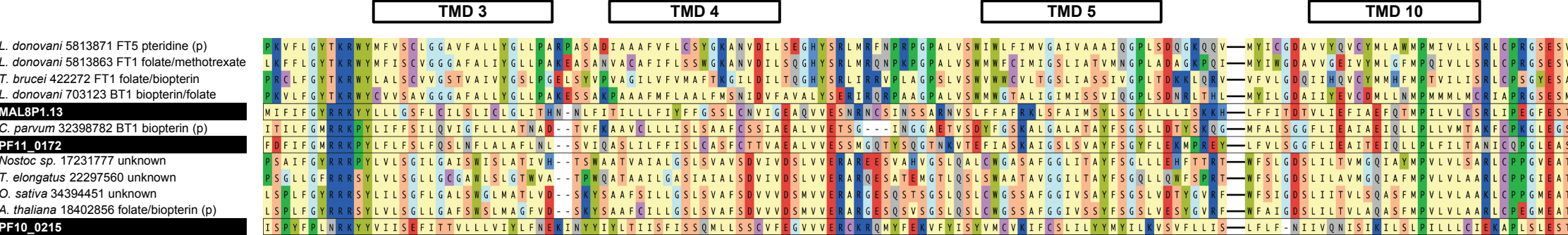


MFS-RELATED FAMILIES

A. ORGANO ANION TRANSPORTER FAMILY



B. FOLATE-BIOPTERIN FAMILY



Additional data file 5. The alignment of the *P. falciparum* putative (A) organo anion transporter and (B) folate-biopterin transporters with a representative selection of known and putative organo anion or folate-biopterin transporters, respectively, from other organisms. Both transporter families are distantly related to the MFS. The region over TMDs 2-5 and TMD 8 of the organo anion transporter family alignment is shown. The region over TMDs 3-5 and TMD 10 of the folate-biopterin transporter family alignment is shown. Legend as described for Additional data file 4.