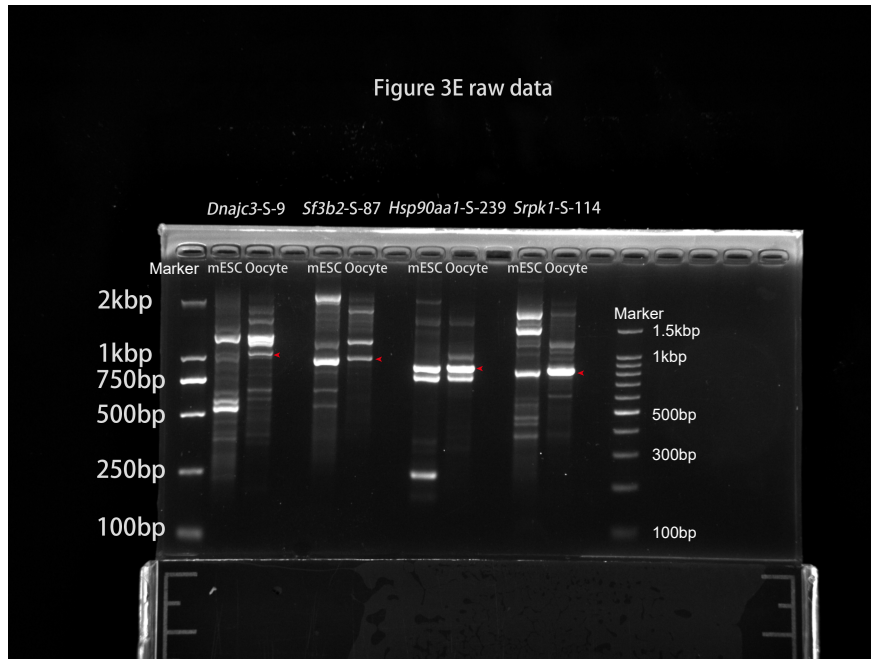
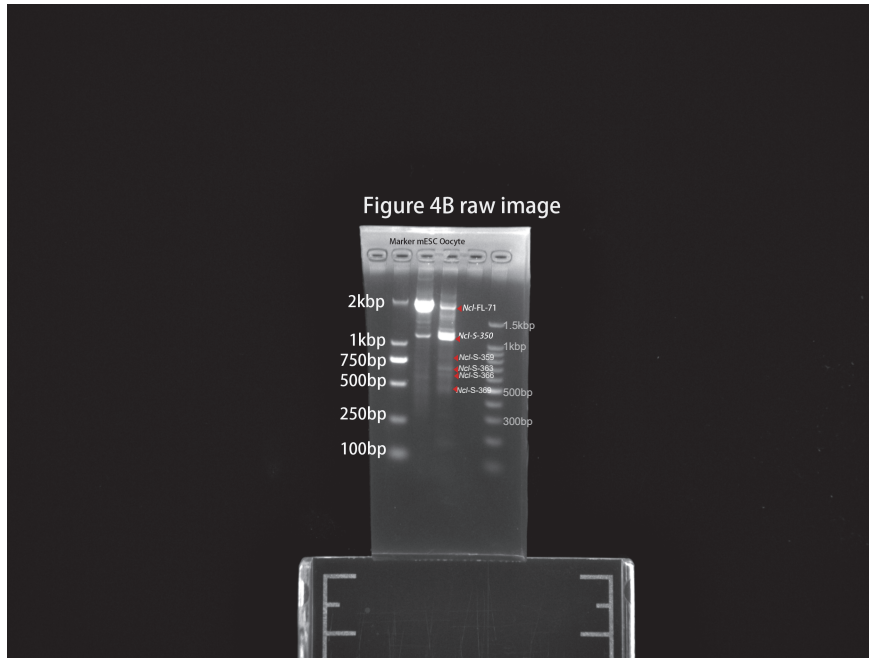


Figure 3E raw data

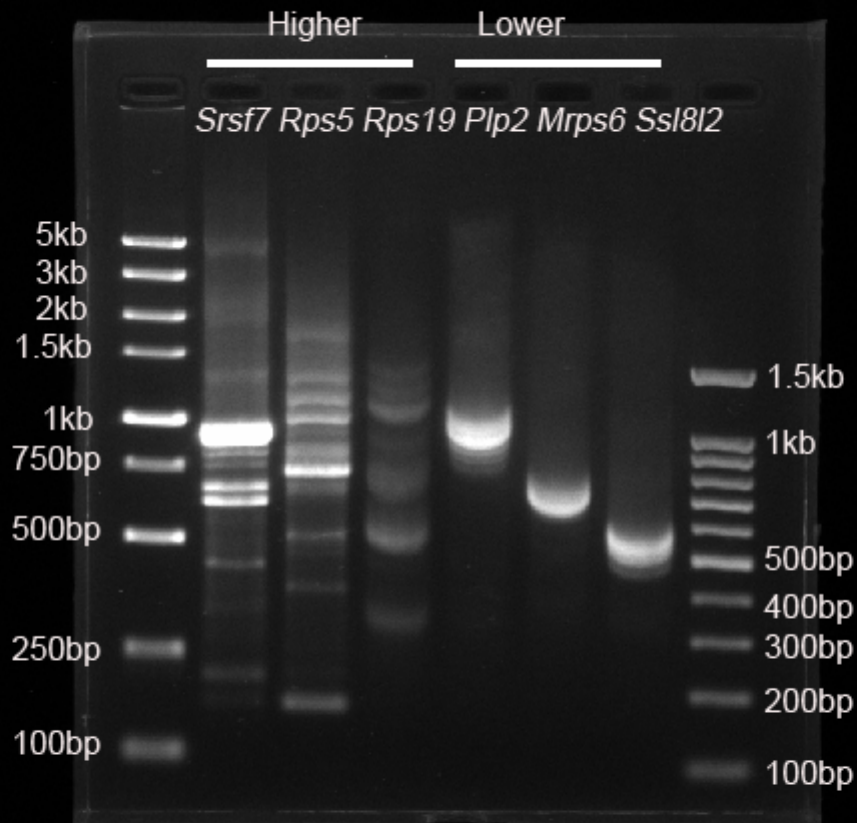


All the samples were amplified for 32cycles with gene primers, then 8ul of the PCR products were loaded on the lanes respectively. After 45 minutes running under 120V, the Gel was snapped in the UV gel imager machine.



All the samples were amplified for 32cycles with gene primers, then 8ul of the PCR products were loaded on the lanes respectively. After 30 minutes running under 120V, the Gel was snapped in the UV gel imager machine.

# S2F Figure



All the samples were amplified for 32cycles with gene primers, then 8ul of the PCR products were loaded on the lanes respectively. After 50 minutes running under 120V, the Gel was snapped in the UV gel imager machine.