

T1. Complications of uveitis in patients with UG and OHT-SU

Characteristic	N	UG = 108 (57%)	OHT-SU= 83 (43%)	P-value ^a
Corneal edema	191	17 (16%)	4 (4.8%)	0.017
Posterior vitreous detachment	191	38 (35%)	27 (33%)	0.7
Macular edema	191	22 (20%)	19 (23%)	0.67
Epiretinal membrane	191	22 (20%)	12 (14%)	0.29
Keratic precipitates	191	57 (53%)	46 (55%)	0.72
Band keratopathy	191	6 (5.6%)	4 (4.8%)	>0.99
Retinal detachment	191	13 (12%)	12 (14%)	0.62
Vitreous hemorrhage	191	5 (4.6%)	2 (2.4%)	0.7
Bullous keratopathy	191	3 (2.8%)	1 (1.2%)	0.63
Anterior synechia	191	13 (12%)	4 (4.8%)	0.082
Posterior synechia	191	43 (40%)	18 (22%)	0.008
Retinal neovascularization	191	3 (2.8%)	2 (2.4%)	>0.99
Periphlebitis	191	1 (0.9%)	1 (1.2%)	>0.99
Retinoschisis	191	2 (1.9%)	0 (0%)	0.51
Ciliary rotation	191	0 (0%)	2 (2.4%)	0.19
Neovascularization of the anterior segment	191	7 (6.5%)	0 (0%)	0.019
Iridian nodules	191	5 (4.6%)	5 (6.0%)	0.75

^a A t-test or Mann–Whitney test was used for continuous variables, and a Chi-square (χ^2) test or Fisher's exact test for categorical variables according to their distribution. Bold= Statistically significant.

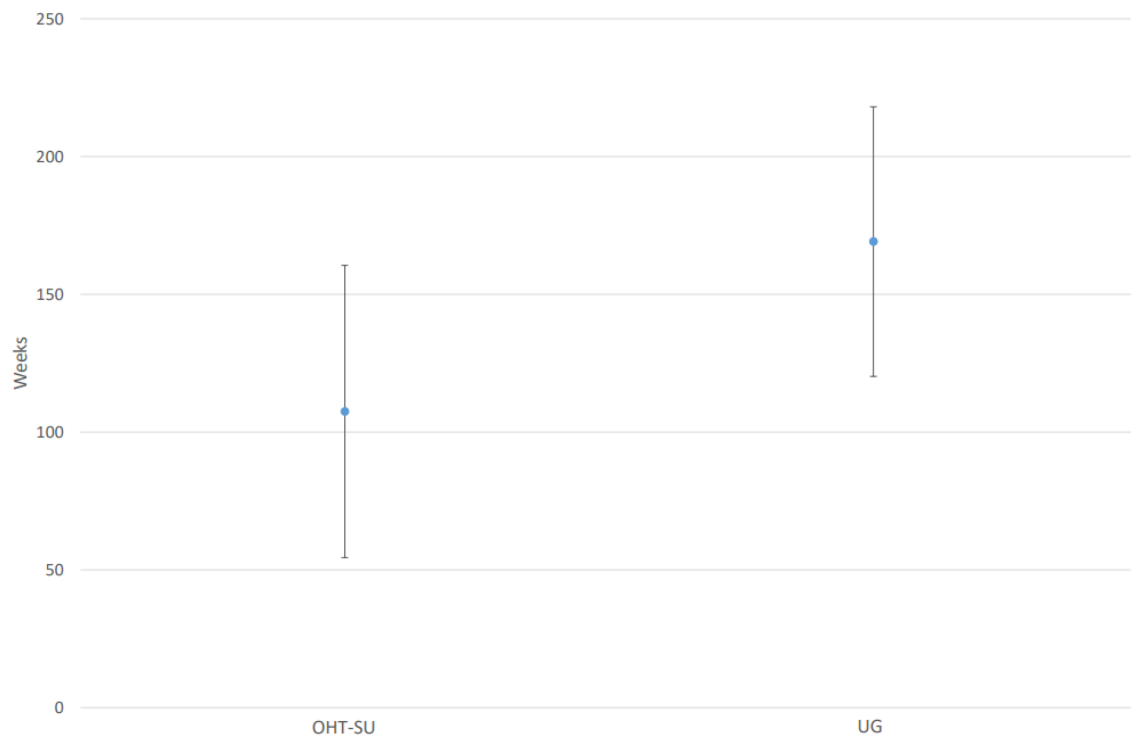
T2. Pediatric uveitic glaucoma and secondary ocular hypertension

Clinical characteristics	UG N=10 (%)	OHT-SU N=10 (%)
Female	7 (70%)	6 (60%)
Male	3 (30%)	4 (40%)
Age of first uveitis episode:	7.5 (5.0 - 12.0)	5.0 (3.5 - 10.7)
Anatomic Localization		
Anterior	3 (30%)	4 (40%)
Intermediate	1 (10%)	2 (20%)
Panuveitis	6 (60%)	4 (40%)
Etiology		
Autoimmune	3 (30%)	2 (20%)
Autoinflammatory	0 (0%)	1 (10%)
Idiopathic	4 (40%)	5 (50%)
Infectious	0 (0%)	1 (10%)
Mixed	0 (0%)	1 (10%)
Others	3 (30%)	0 (0%)
Last visit visual acuity (logMAR):	0.3 (0.2- 0.4)	0.0 (0.0 - 0.1)
Highest IOP	22 (15.0 - 31.5)	29.0 (21.2 - 32.2)
Last visit Cup/Disk ratio	0.7 (0.5 - 0.7)	0.1 (0.0 - 0.1)
Abnormal OCT	5 (50%)	4 (40%)
Abnormal VF	3 (30%)	0 (0%)
# Hypotensive medications	2.5 (1.2 - 3.7)	1.5 (0.0 - 2.0)
Surgically managed	7 (70%)	0 (0%)

T3. Medical and surgical management used in UG and OHT-SU

Medical treatment, n= 155 (81.15%)		
Hypotensive	UG	OHT-SU
Beta-blockers	85	62
Topical carbonic anhydrase inhibitor	76	49
Alpha2-agonist	69	39
Oral carbonic anhydrase inhibitor	24	9
Prostaglandin analogs	20	5
Surgical treatment, n= 57 (29.84%)		
Surgical procedure	UG	OHT-SU
Ahmed valve implant	22	0
Trabeculectomy	13	1
Peripheral iridotomy	13	4
Surgical Iridectomy	6	1
SLT	3	1

F1. Mean follow-up time for the UG and OHT-SU groups.



The mean follow-up time was 107.4 weeks in the OHT-SU group vs. 169.1 weeks in the UG group.

$P= 0,07$ (T-test)