

Supplementary Data Fig. 1: Gating strategy for the immunophenotyping by FACS analysis for CAR-T and CAR-NK cells.

Fig. 2c and 2h

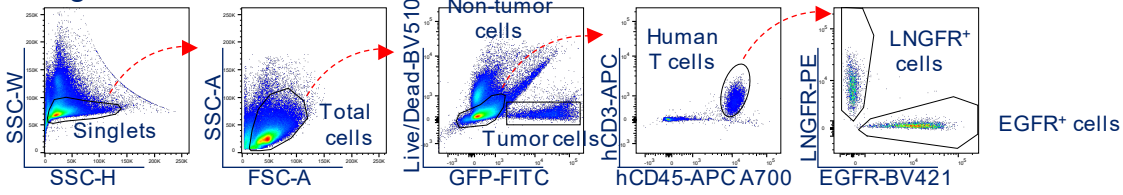


Fig. 2f

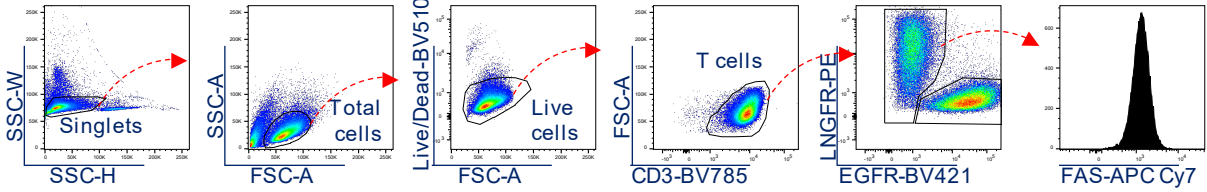


Fig. 5a

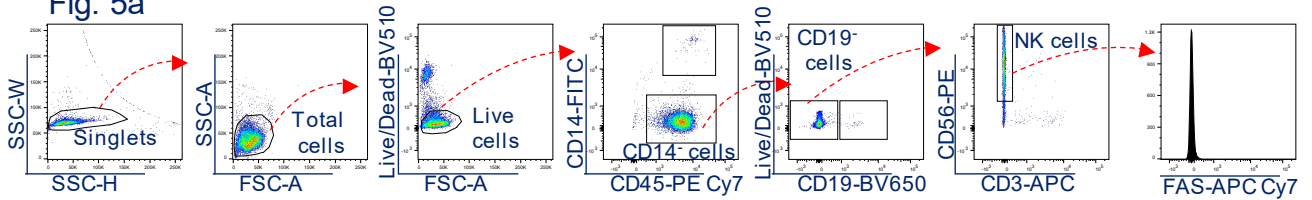


Fig. 5c and Extended Data Fig. 3b

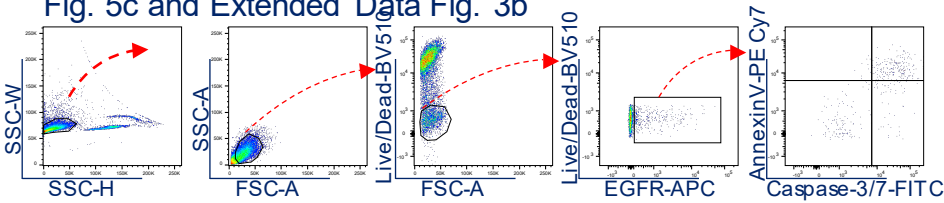
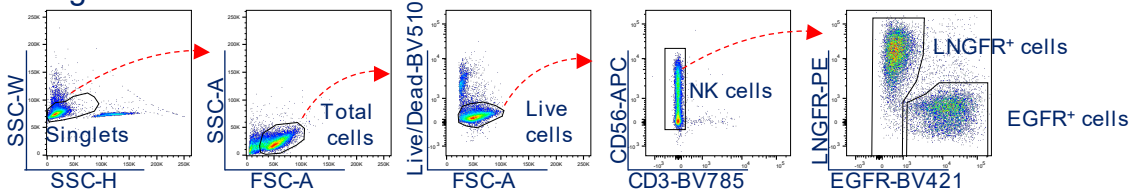
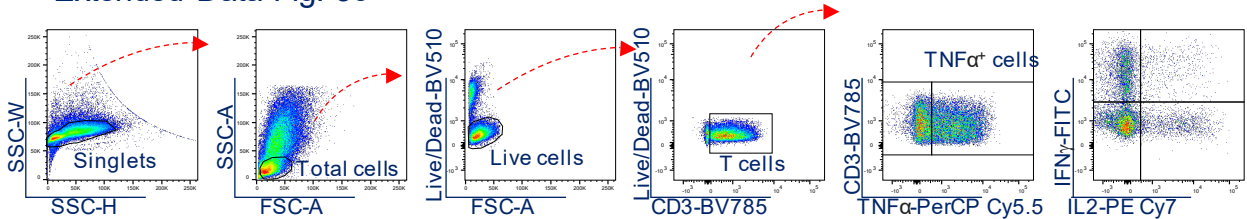


Fig. 5e



Extended Data Fig. 3c



Supplementary Table 1: sgRNA sequences for CRISPR/Cas9 gene editing.

a.

Gene name	Protein name	DNA sequence (5'-3')
<i>AAVS1</i>	Not applicable	GCCAGTAGCCAGCCCCGTCC
<i>FAS</i>	FAS	GTGACTGACATCAACTCCAA
<i>FASLG</i>	FAS ligand	TGGGGATATGGGTAATTGAA
<i>TNFSF10</i>	TRAIL	CTCCTGCAGTCTCTCTGTGT

b.

Gene name	Protein name	Primer sequence (5'-3')
<i>AAVS1</i>	Not applicable	F: CCAAGGACTCAAACCCAGAA
		R: TGCTGCAGCTTCCTTACACT
<i>FAS</i>	FAS	F: TCTATCATTTCATGGTGCTGTTTC
		R: AGGGGAACCAAAAACGTAAAA
<i>FASLG</i>	FAS ligand	F: GAGAAAGACAGAGGTGTTTC
		R: AATCCTACCAAGGCAACC
<i>TNFSF10</i>	TRAIL	F: ACAGAACCCAGAAAAACAACATCAT
		R: GCTGTTGCTACTGCTGTGGA