

Figure 1c: MFN2 and PTIP51 knockdown

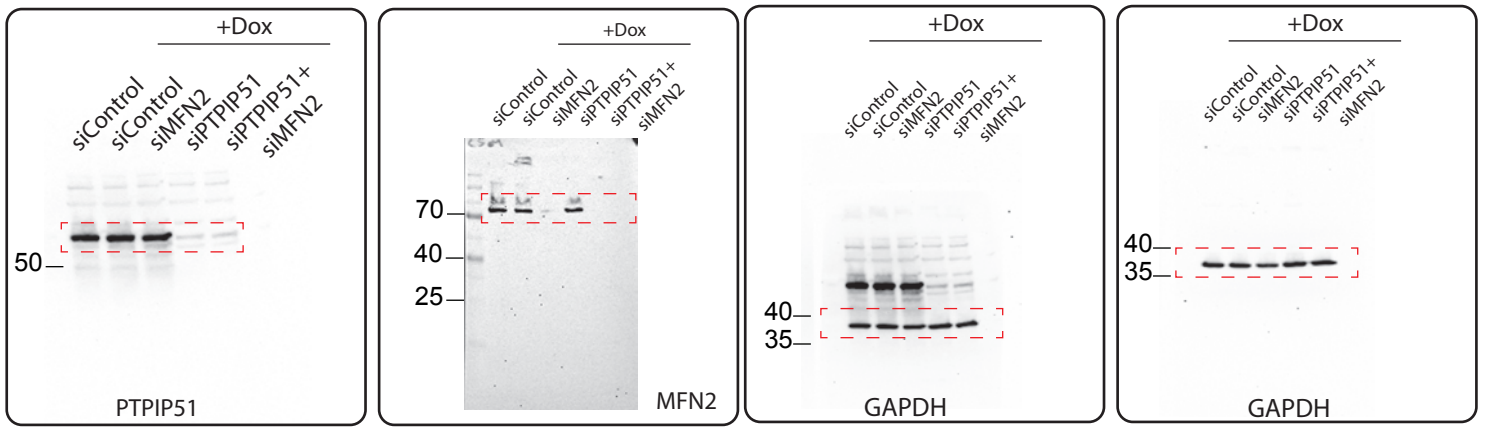


Figure 3d: GET4 and BAG6 knockdown after 7 days

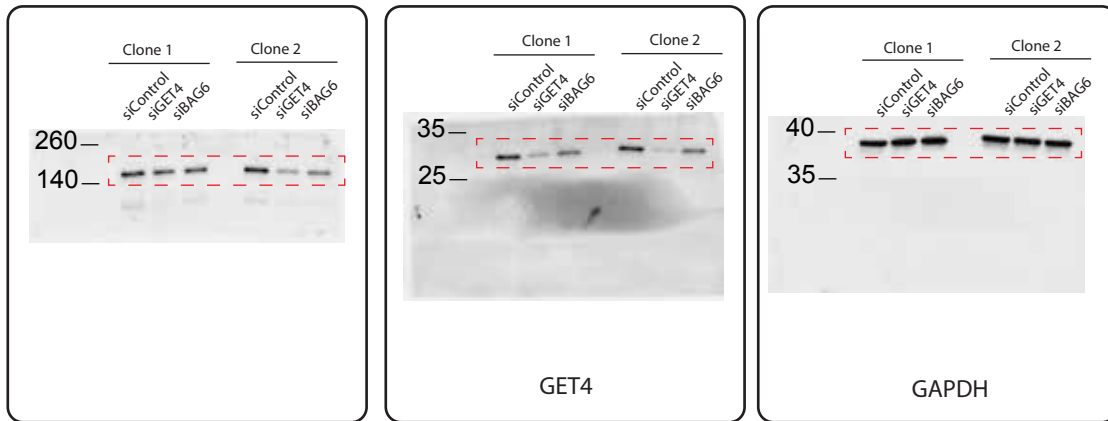


Figure 3d: GET4 and BAG6 knockdown after 3 days

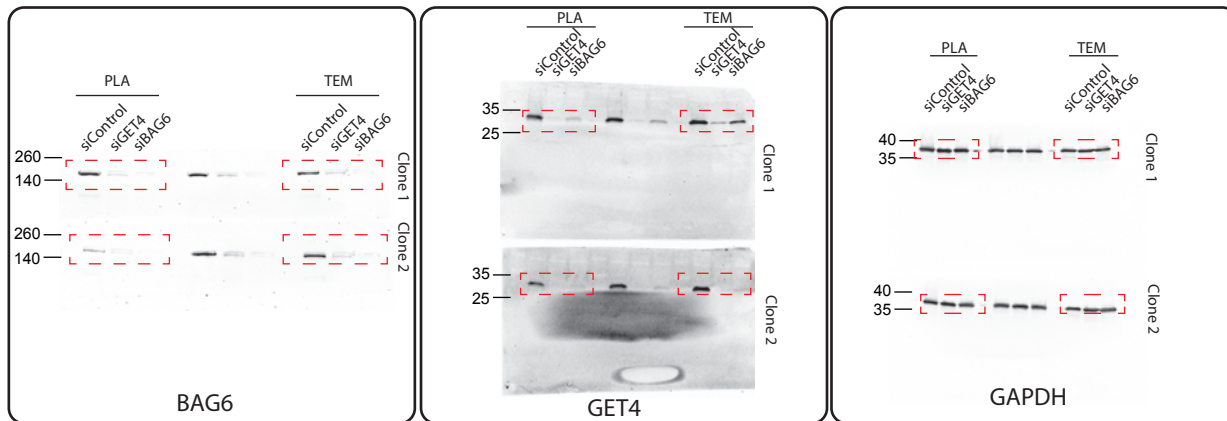


Figure 4a and b: GET4 and BAG6 interact with IP3R and GRP75 Respectively

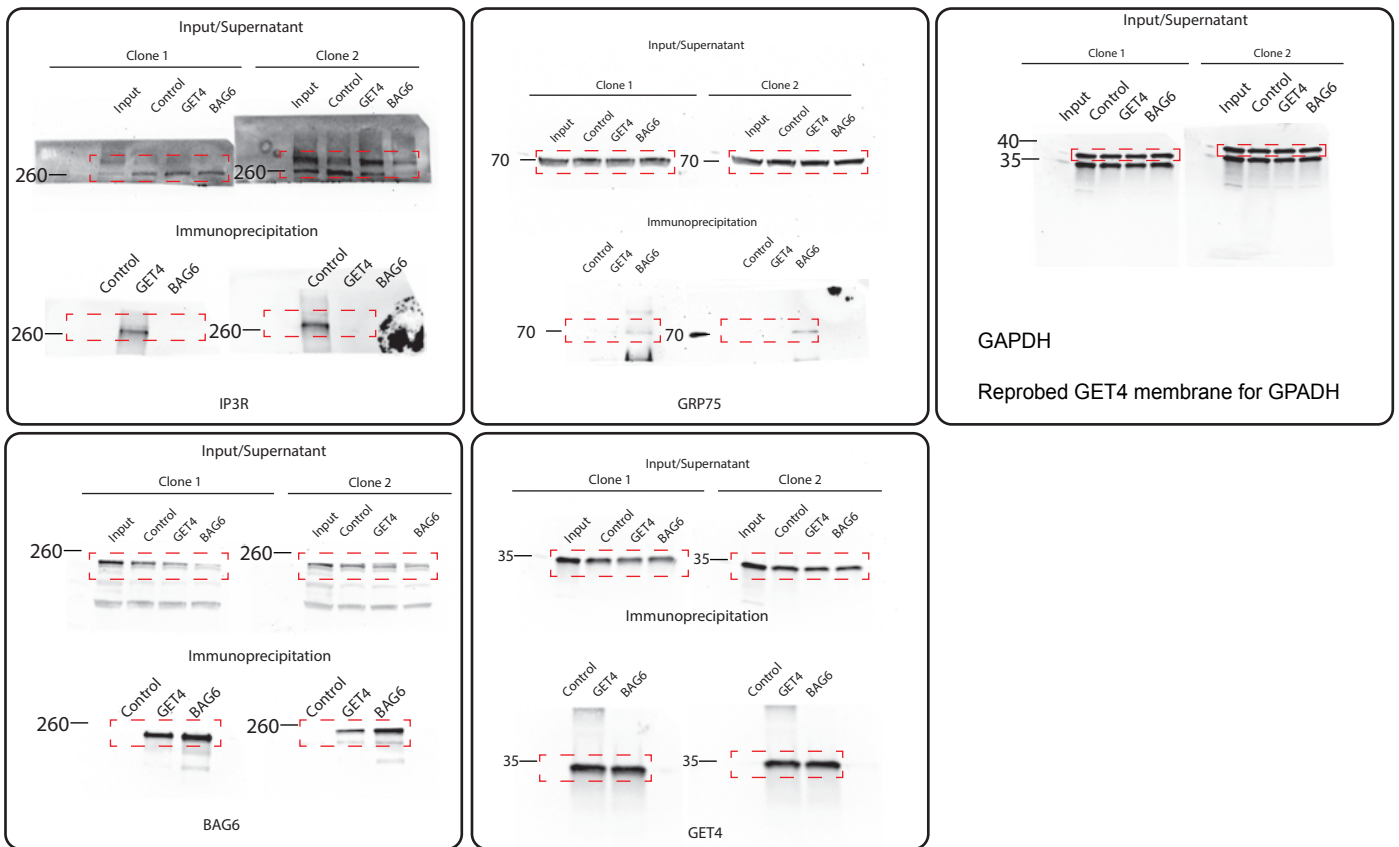


Figure 4a and b: GET4 and BAG6 interact does not interact with MFN2

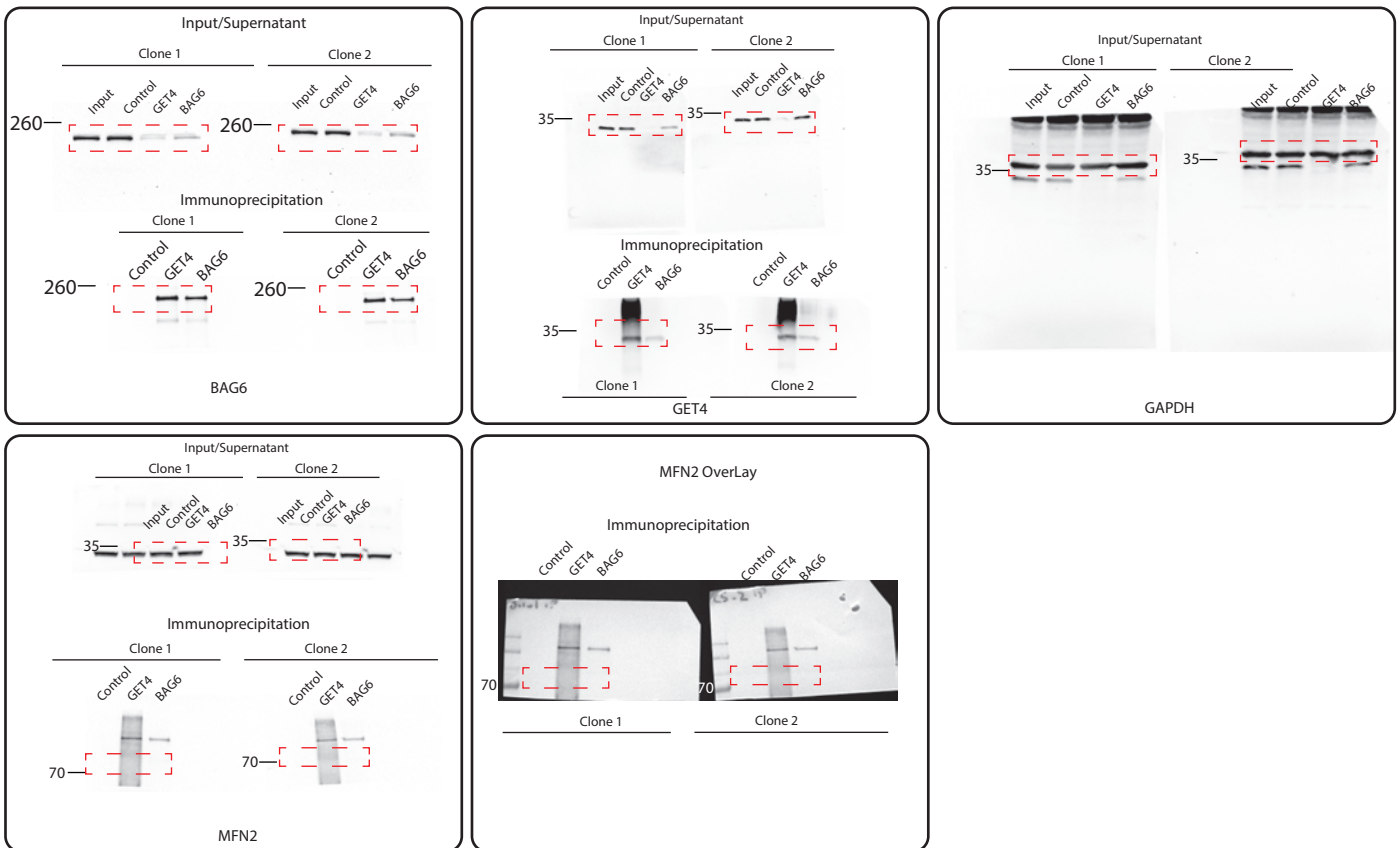


Figure 4c: GET4 and BAG6 interact in samples sent to Mass spec.

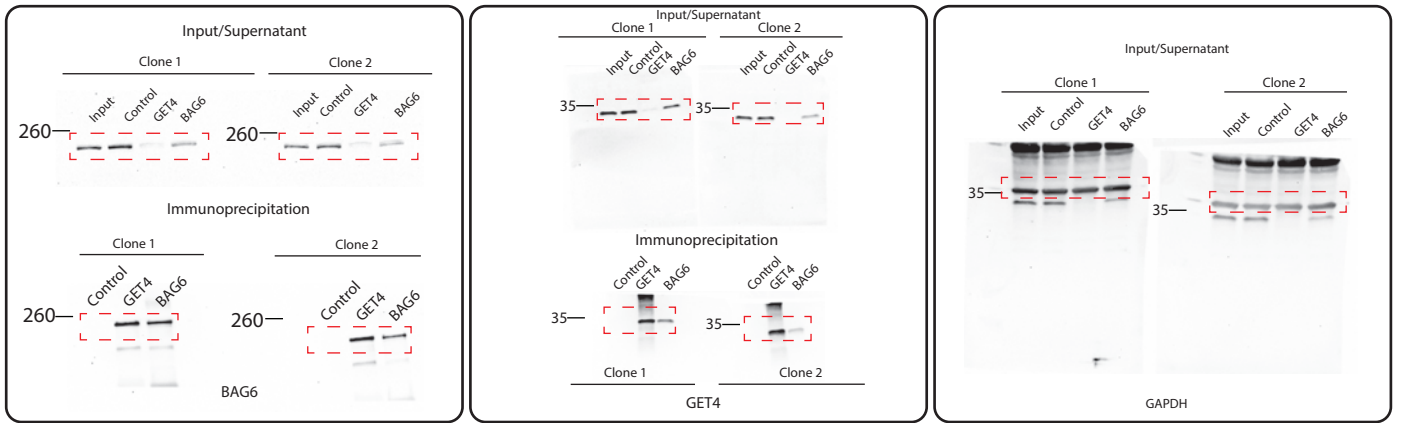


Figure 6c: GET4 Does not alter MICU1 or MICU2.

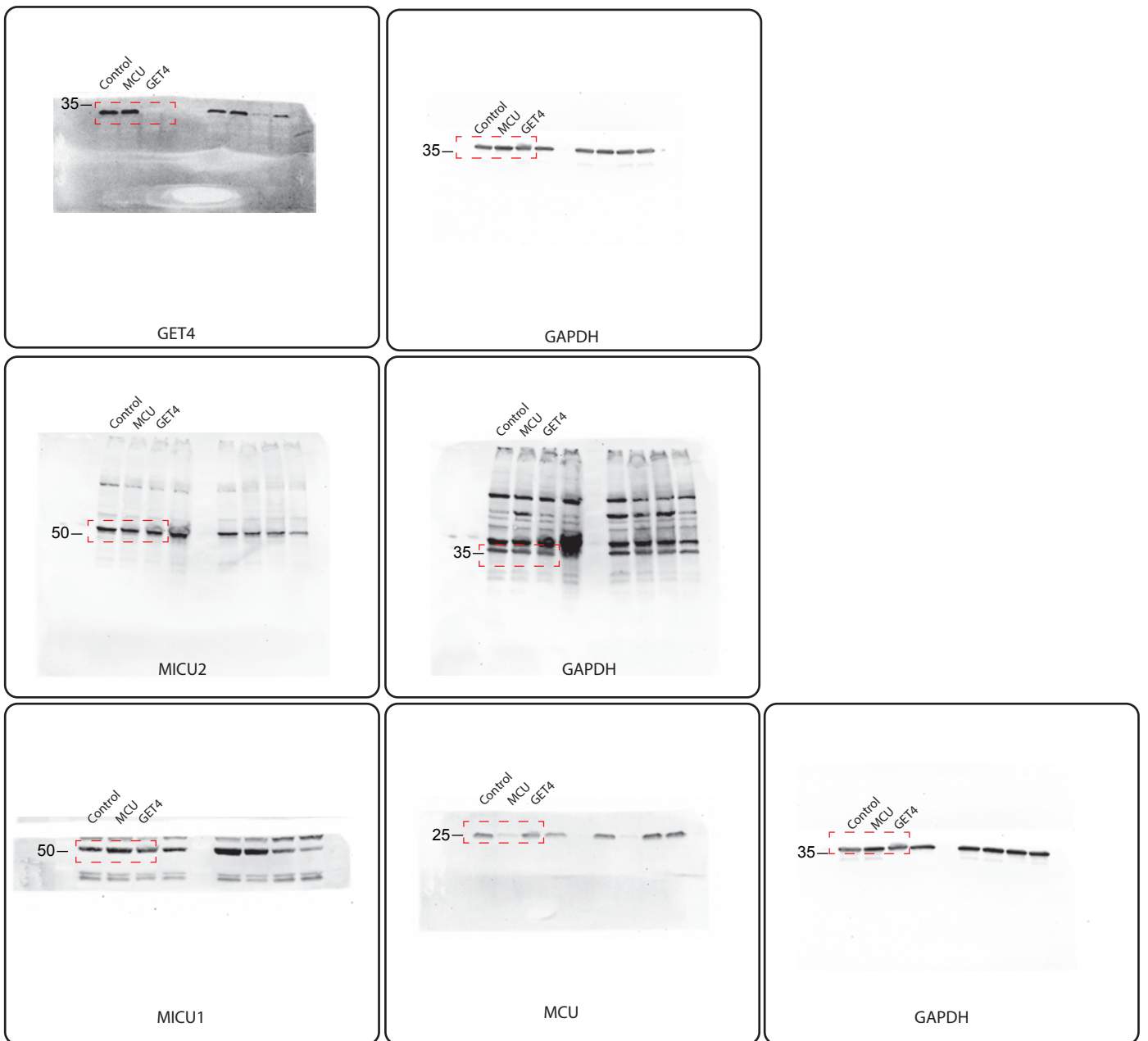
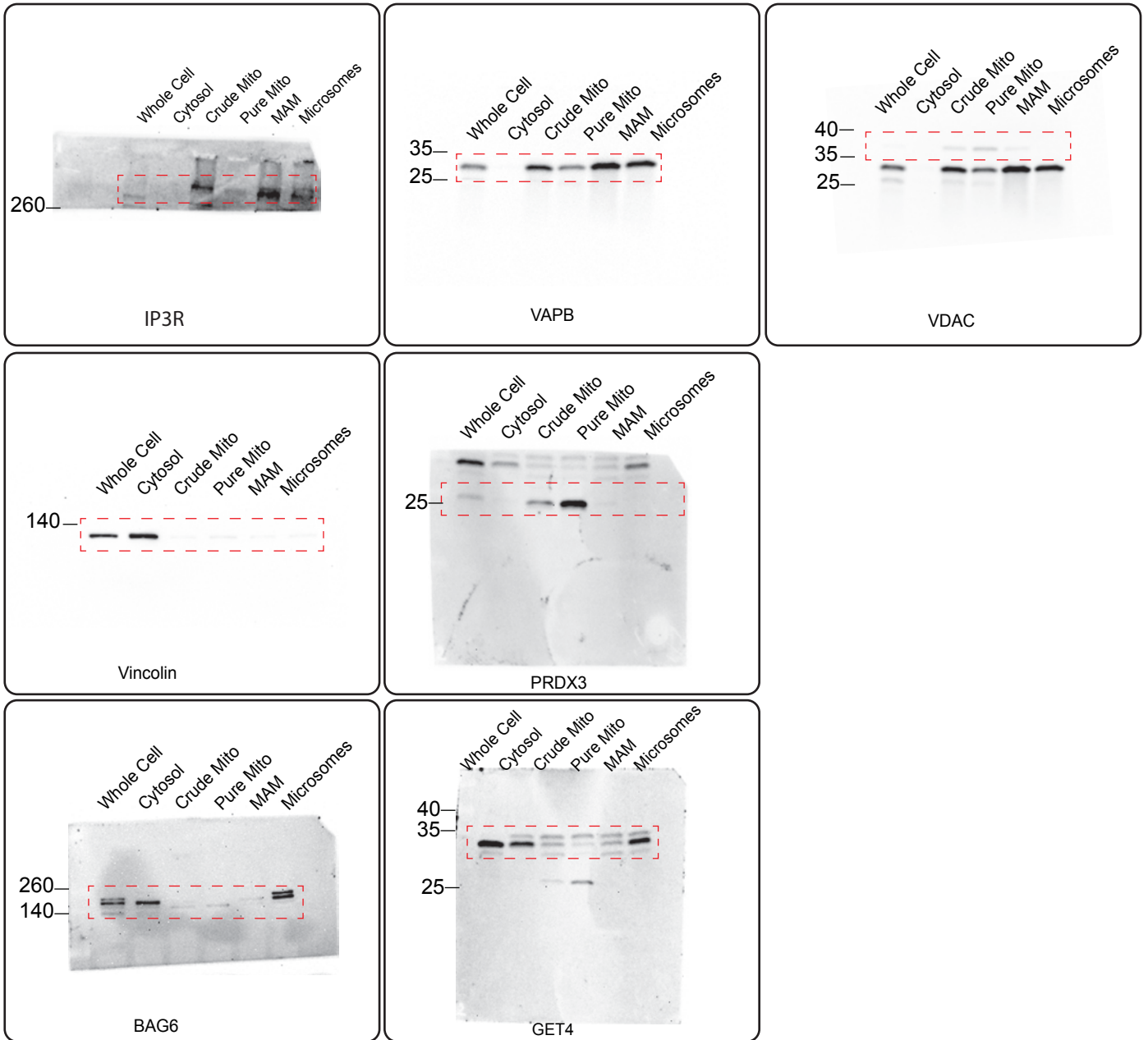
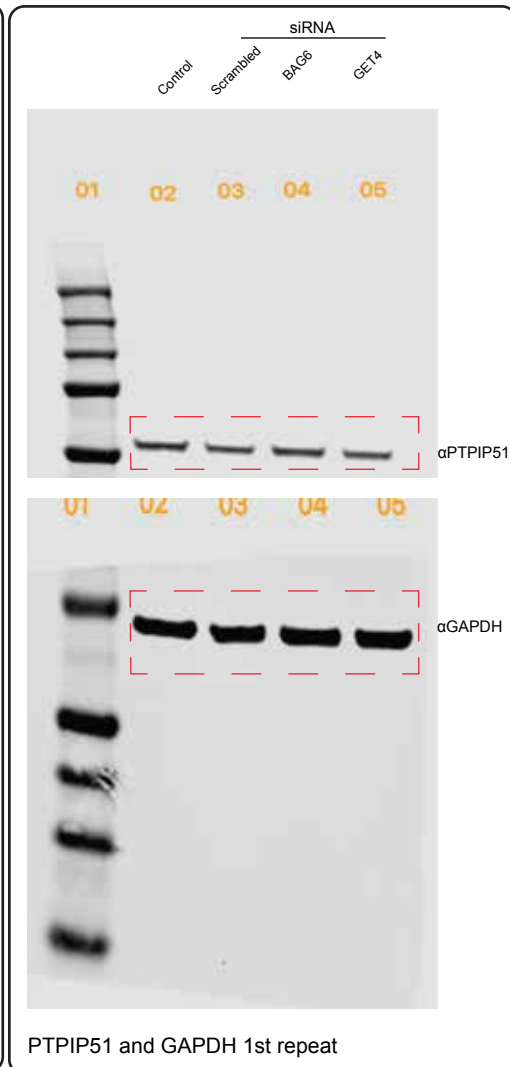
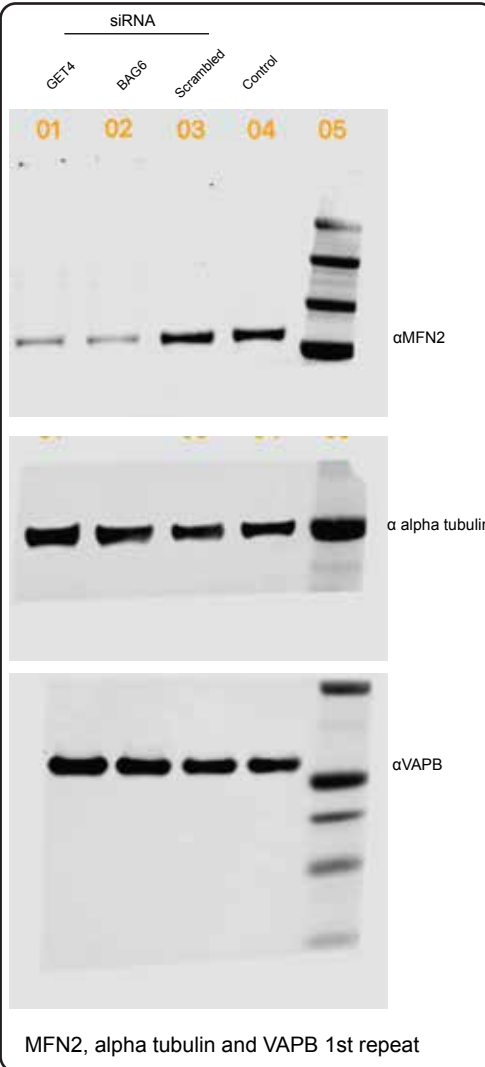
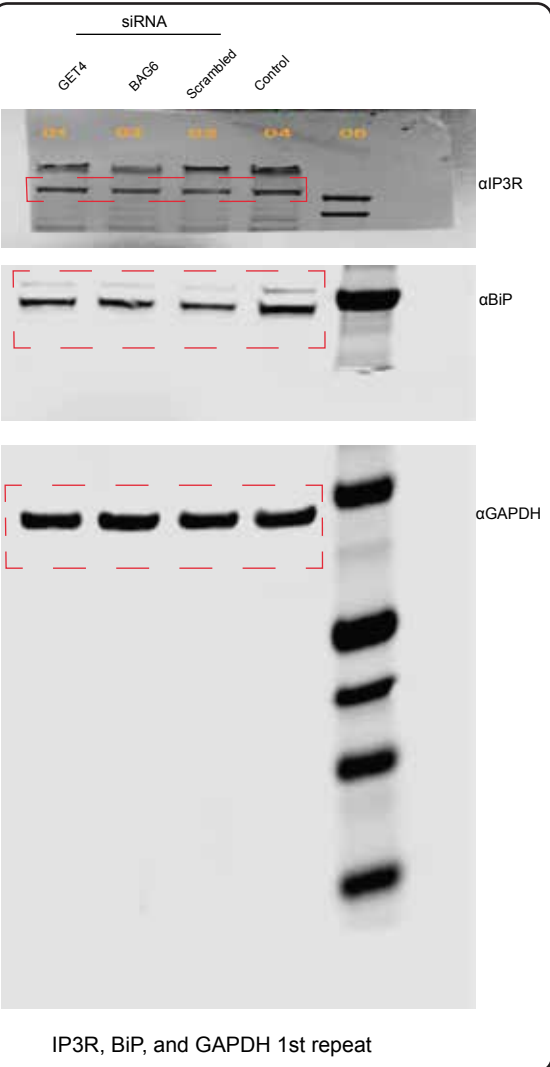
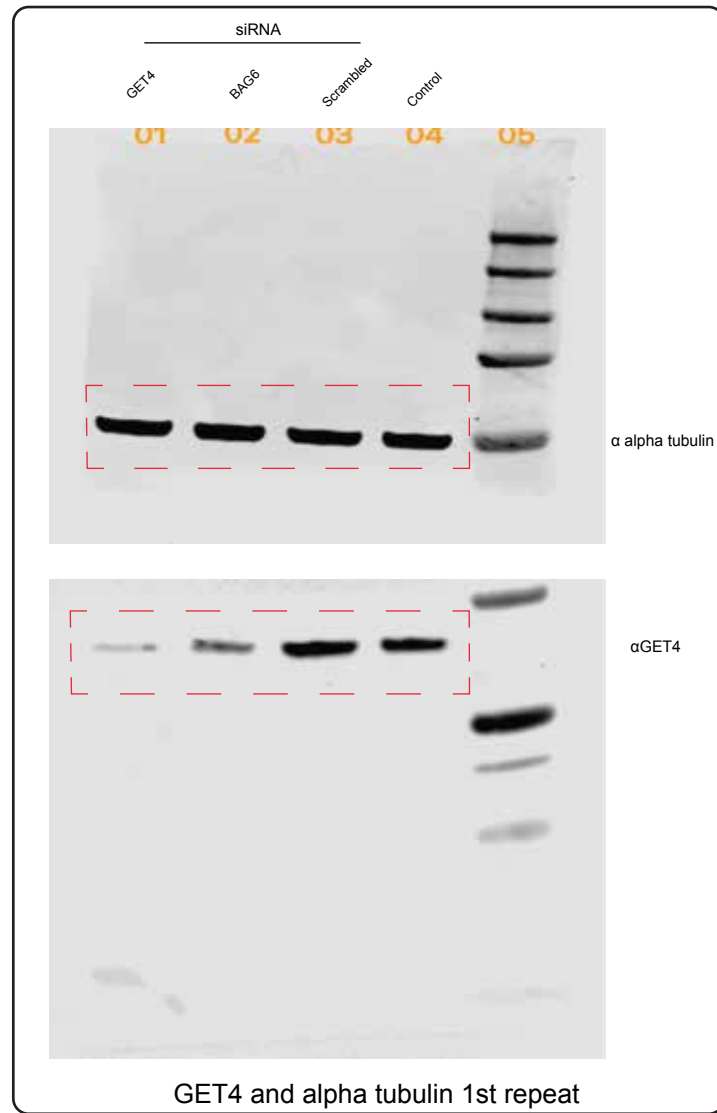
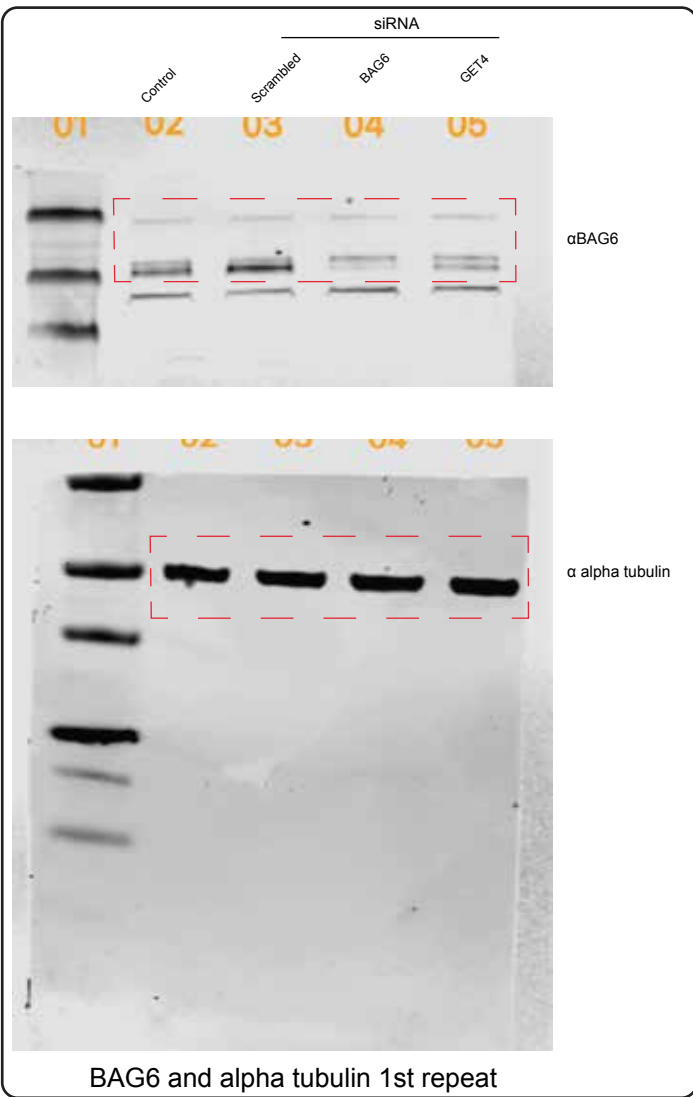
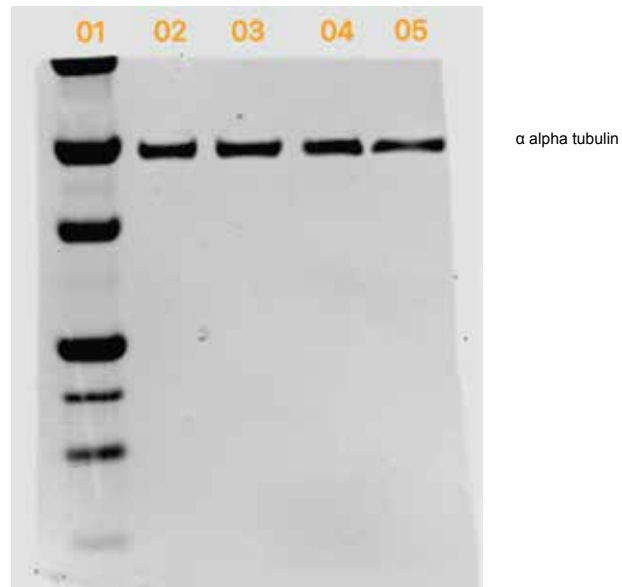
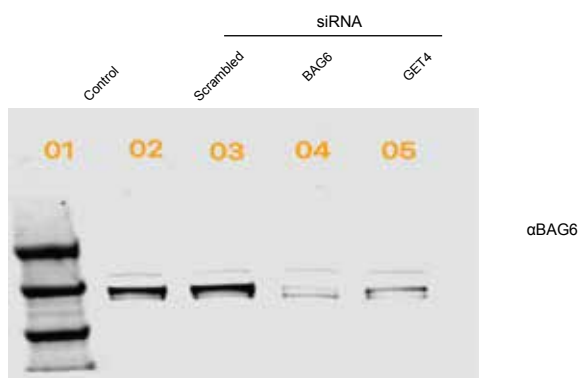


Figure 4a: GET4 and BAG6 can localise to MAM

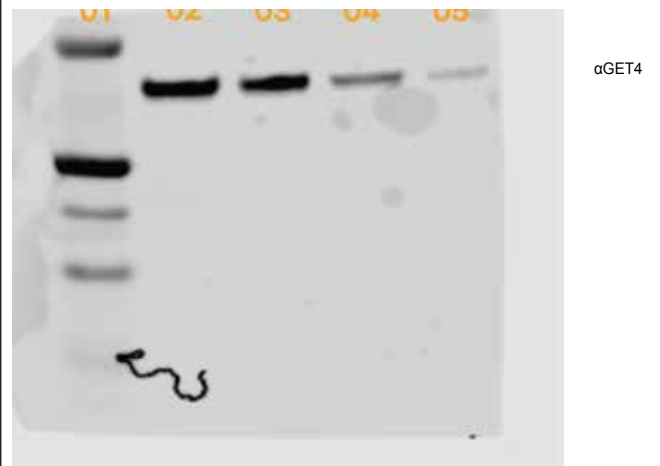
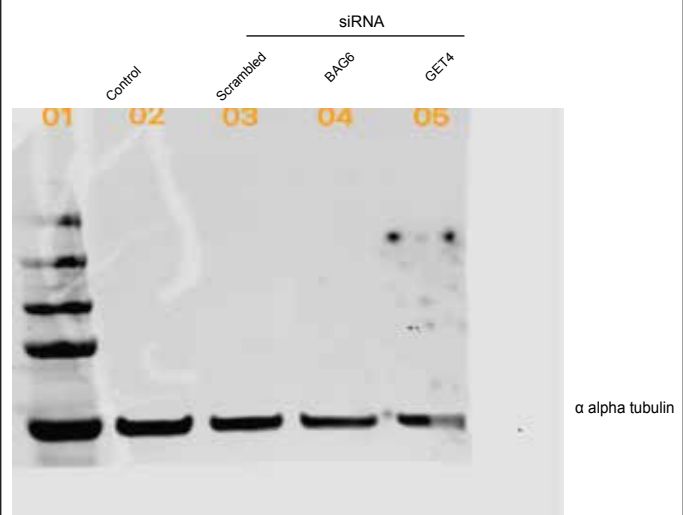


Figures 3 j and k BAG6 and GET4 knockdown

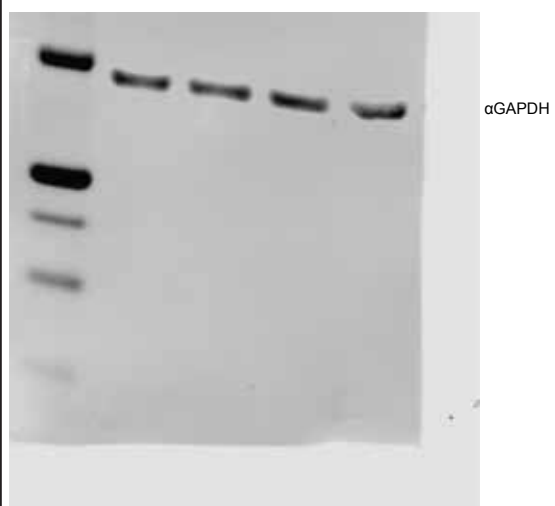
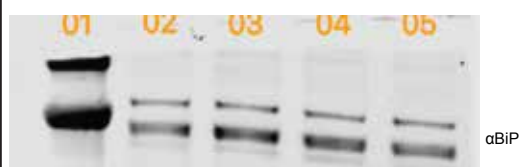
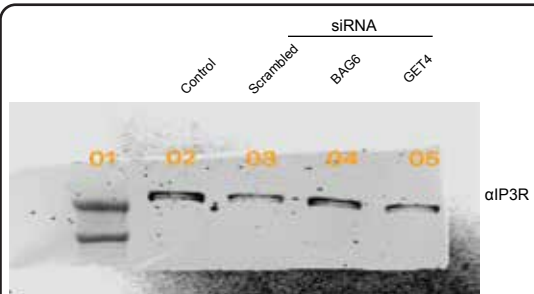




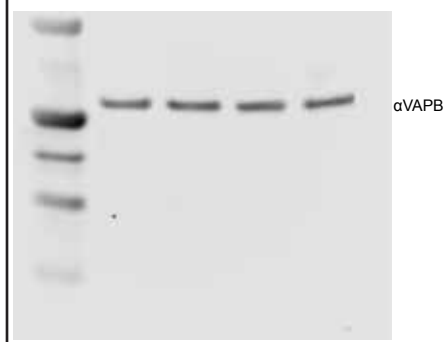
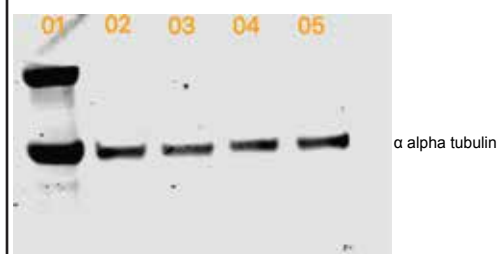
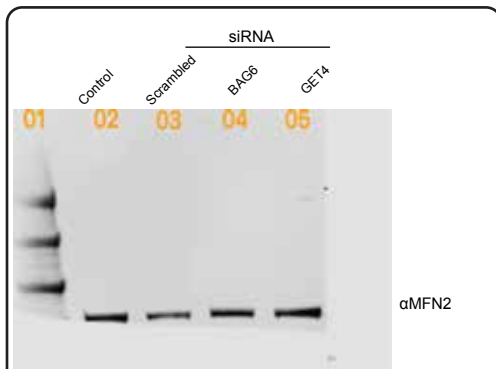
BAG6 and alpha tubulin 2nd repeat



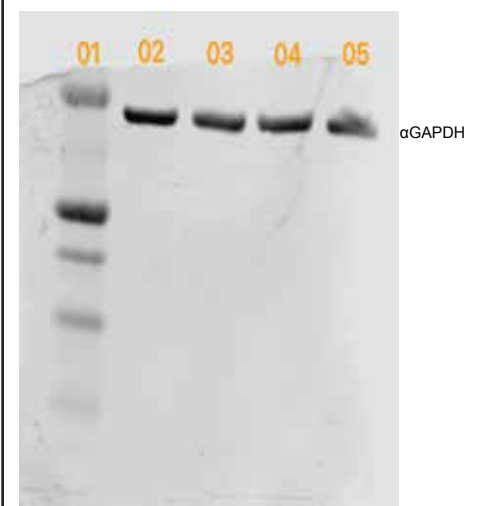
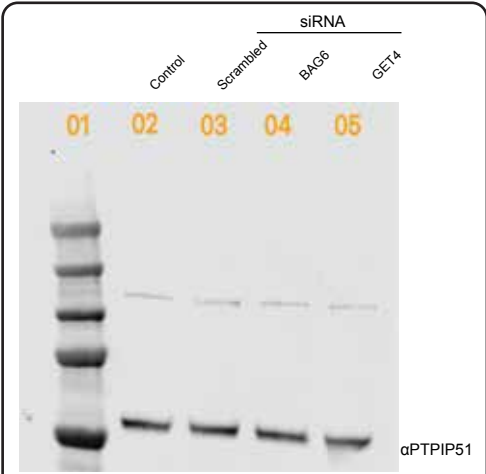
GET4 and alpha tubulin 2nd repeat



IP3R, BiP, and GAPDH 2nd repeat



MFN2, alpha tubulin and VAPB 2nd repeat



PTPIP51 and GAPDH 2nd repeat

