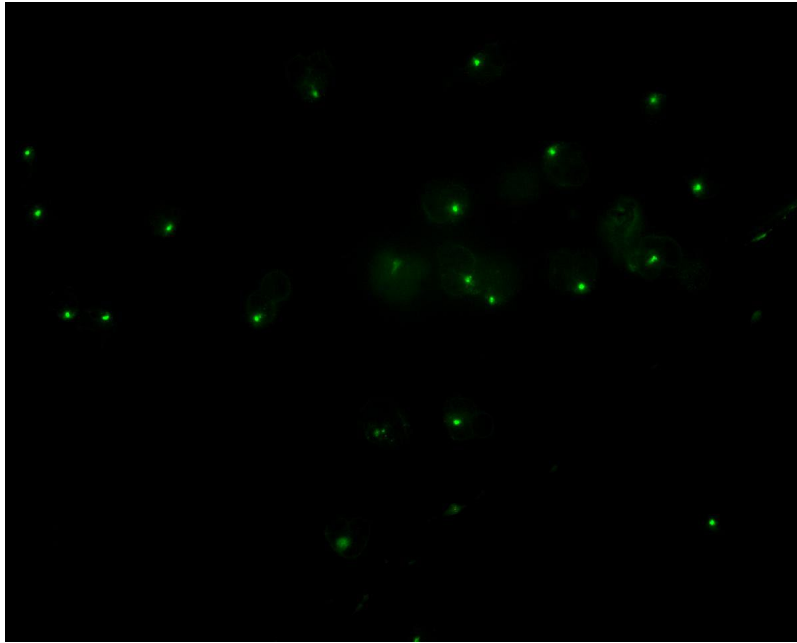


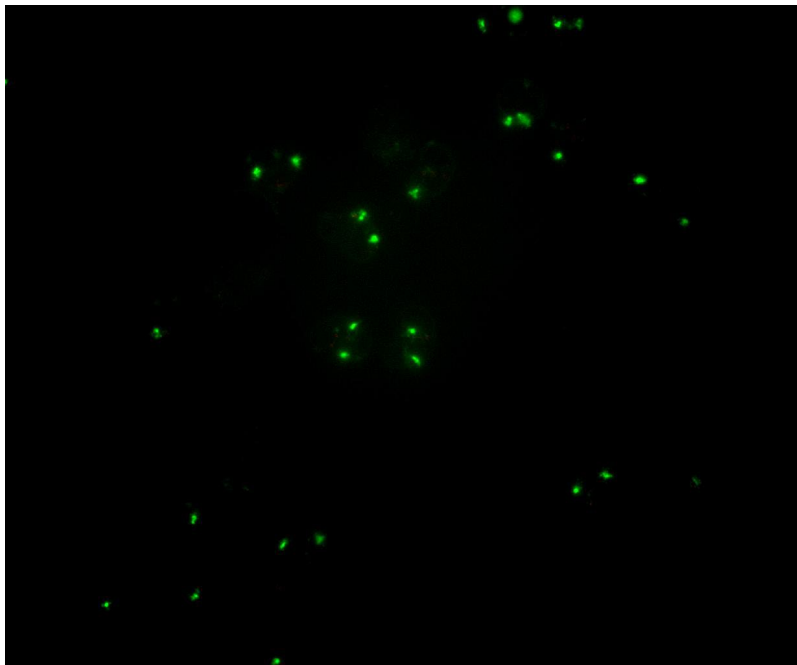
Green represents the X chromosome centromere site

Red represents the Y chromosome centromere site

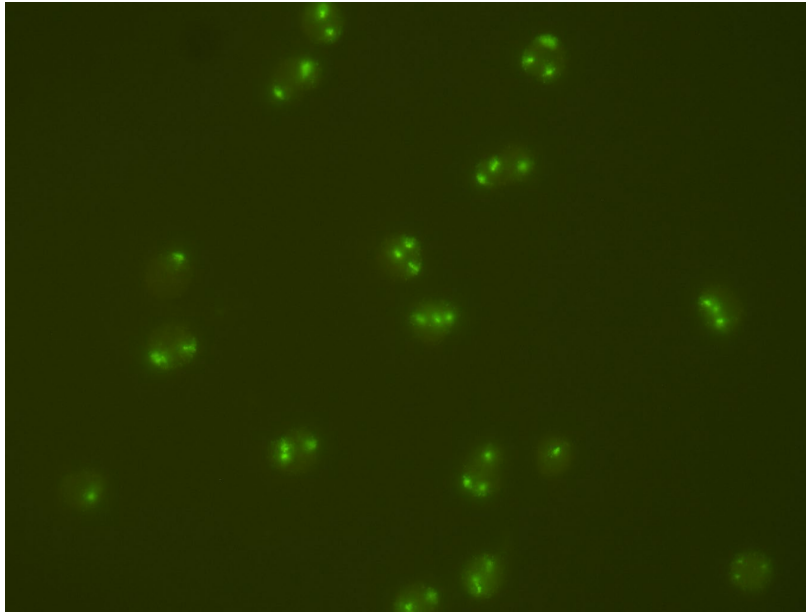
1. Sex chromosomes are XO



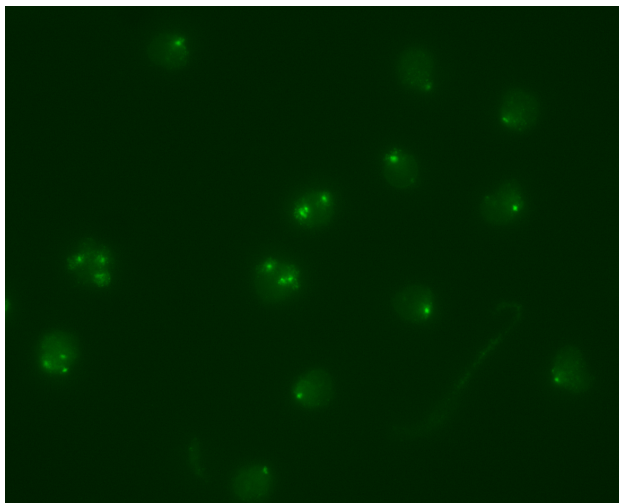
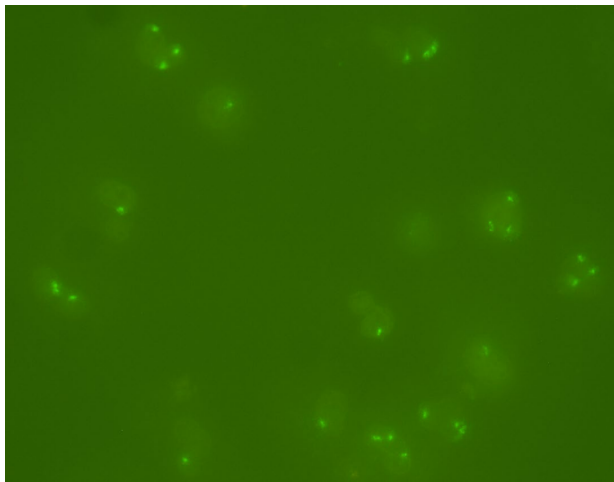
2. Sex chromosomes are X/XO



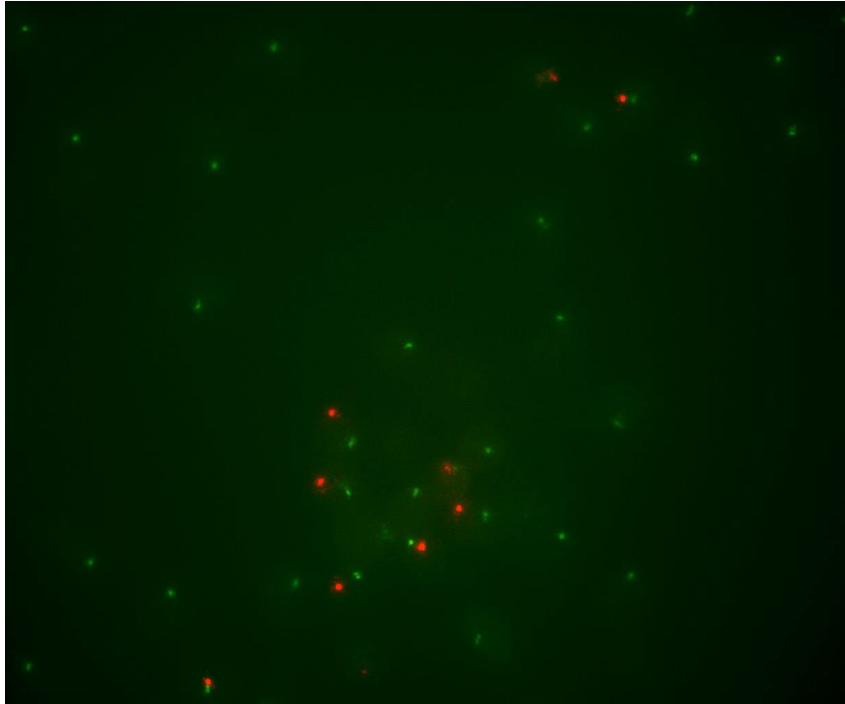
3. Sex chromosomes are X/XX/XXX



4. Sex chromosomes are X/XXX



5. Sex chromosomes are X/XY



6. Sex chromosomes are X/XY/XYY

