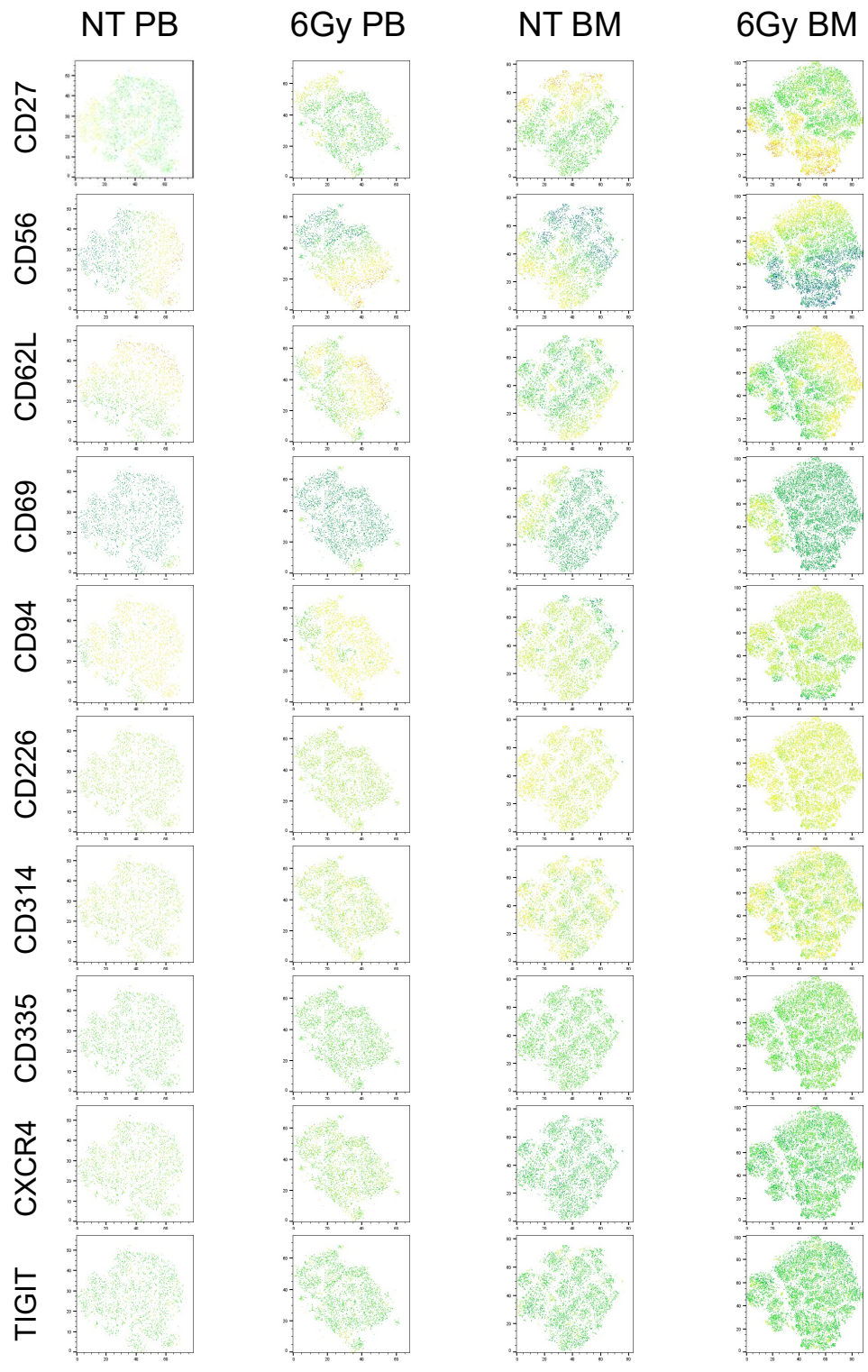
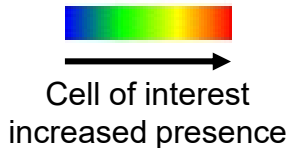
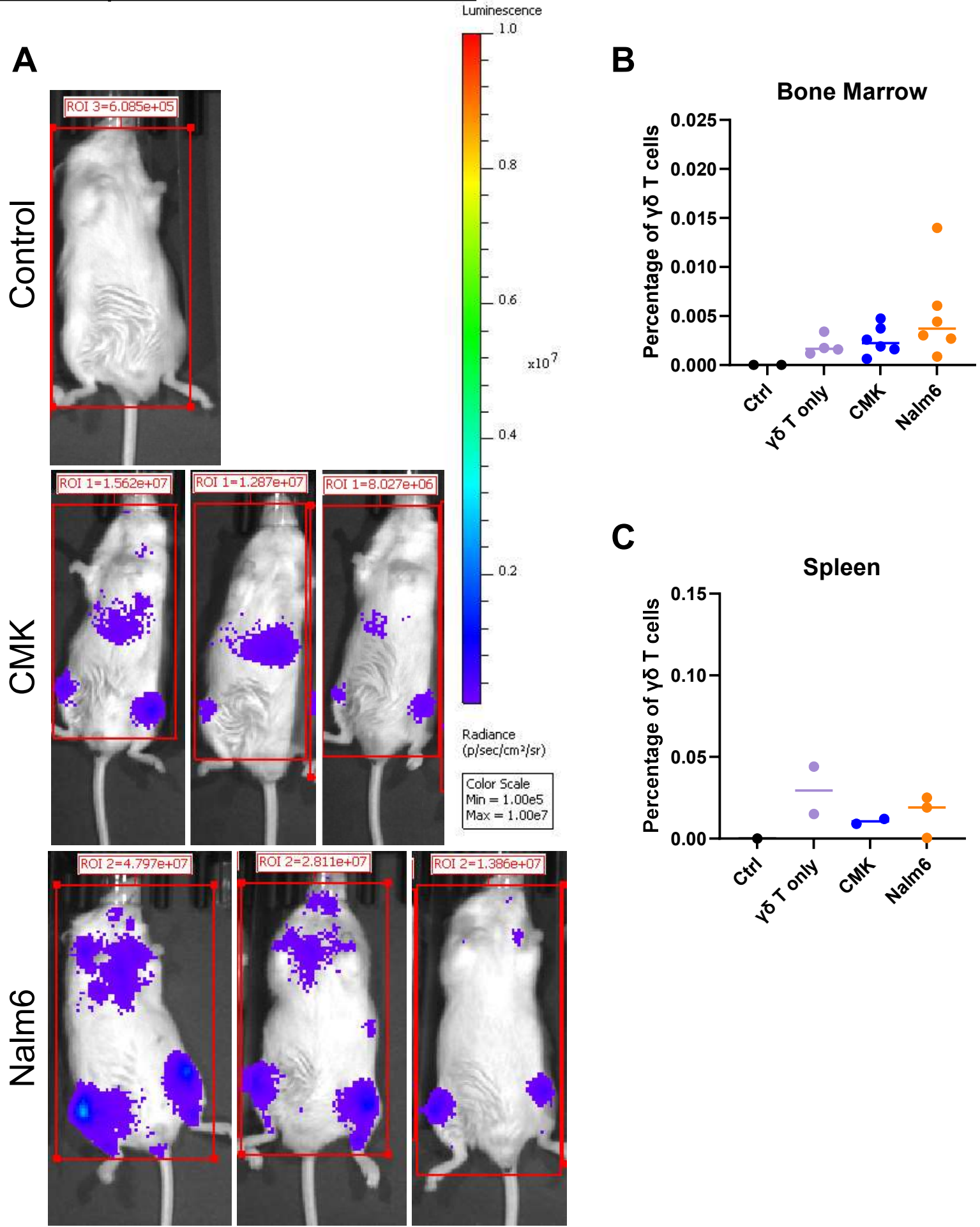


# Supplementary Figure 1: $\gamma\delta$ T cell phenotype remains unchanged from peripheral blood to bone marrow.

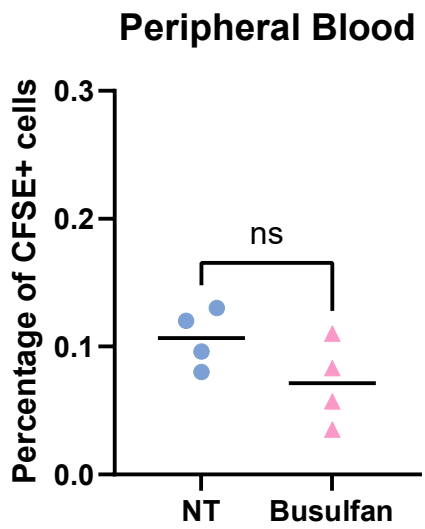


**Supplementary Figure 2: Human  $\gamma\delta$  T cells do not migrate to mouse bone marrow despite the presence of human hematopoietic-derived cell lines.**

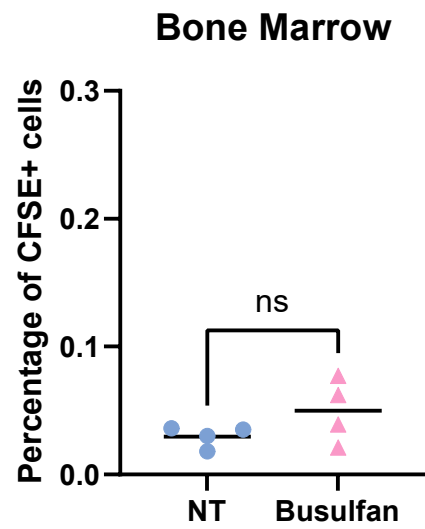


**Supplementary Figure 3: Busulfan does not allow  $\gamma\delta$  T cells to migrate into the bone marrow.**

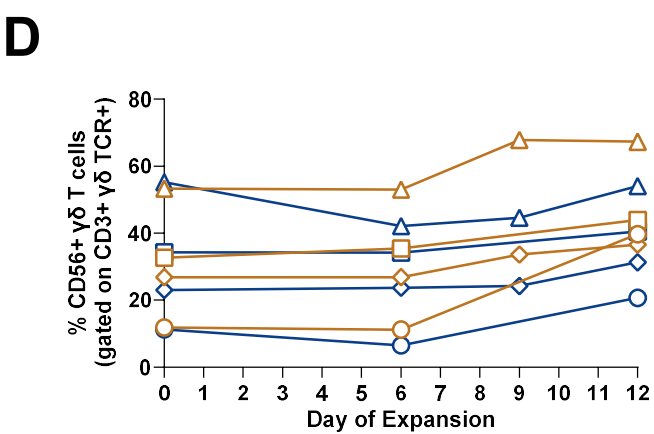
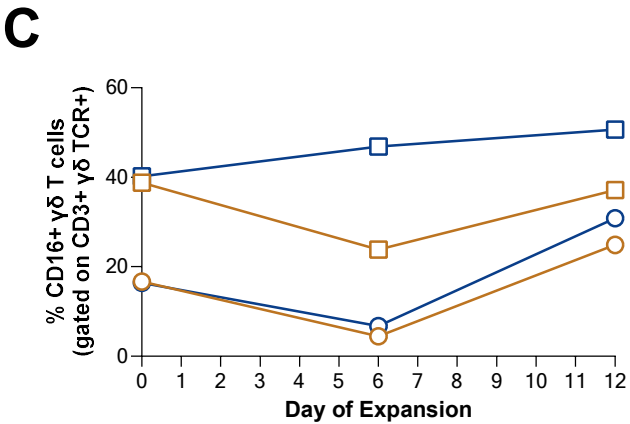
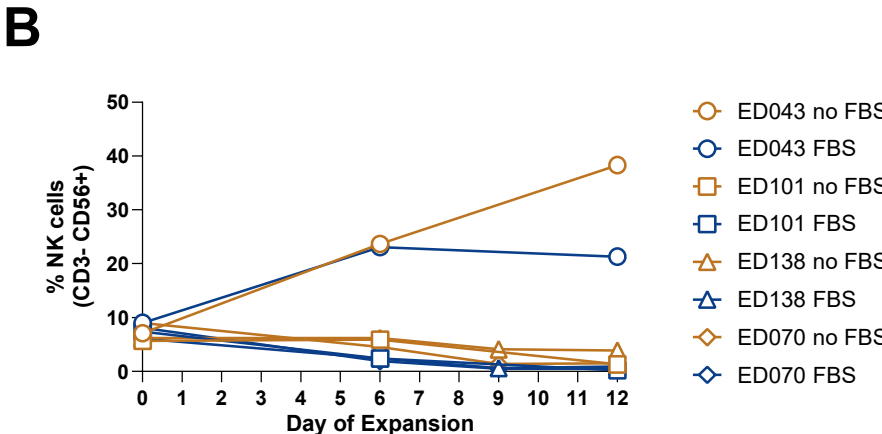
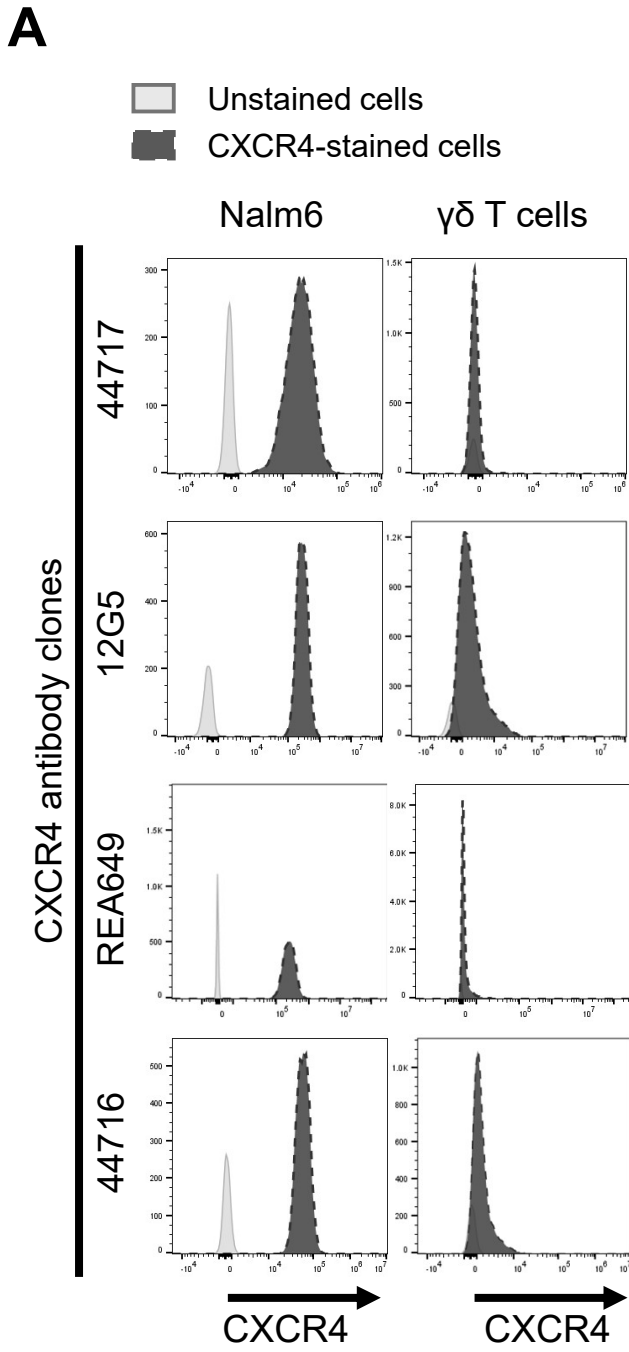
**A**



**B**

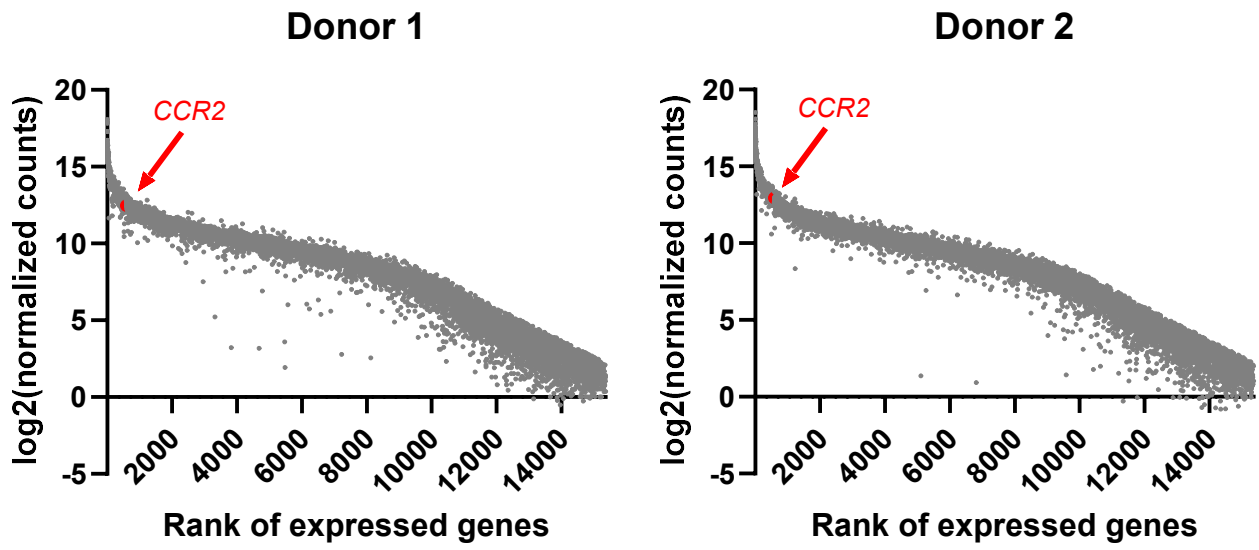


# Supplementary Figure 4: $\gamma\delta$ T cells do not express CXCR4 despite differences in expansion methods.

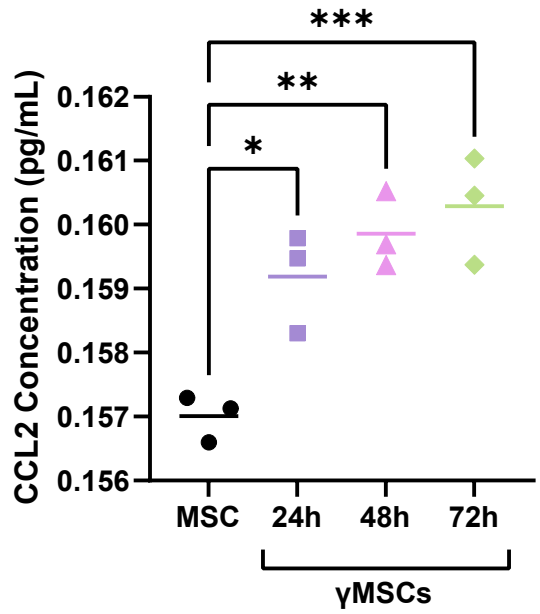


**Supplementary Figure 5:  $\gamma\delta$  T cells express CCR2, and  $\gamma$ MSCs secrete CCL2.**

**A**



**B**



**C**

