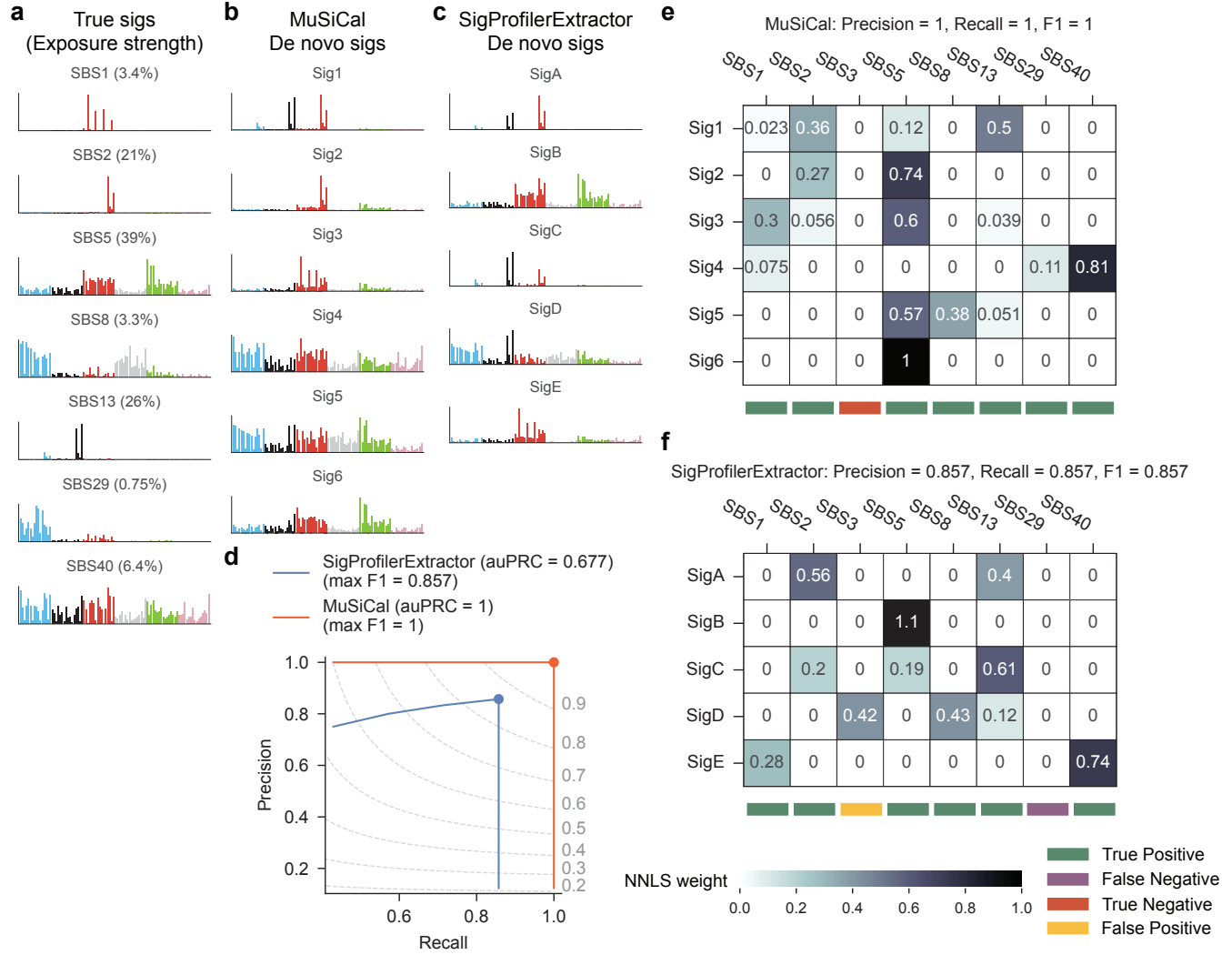


Supplementary Data

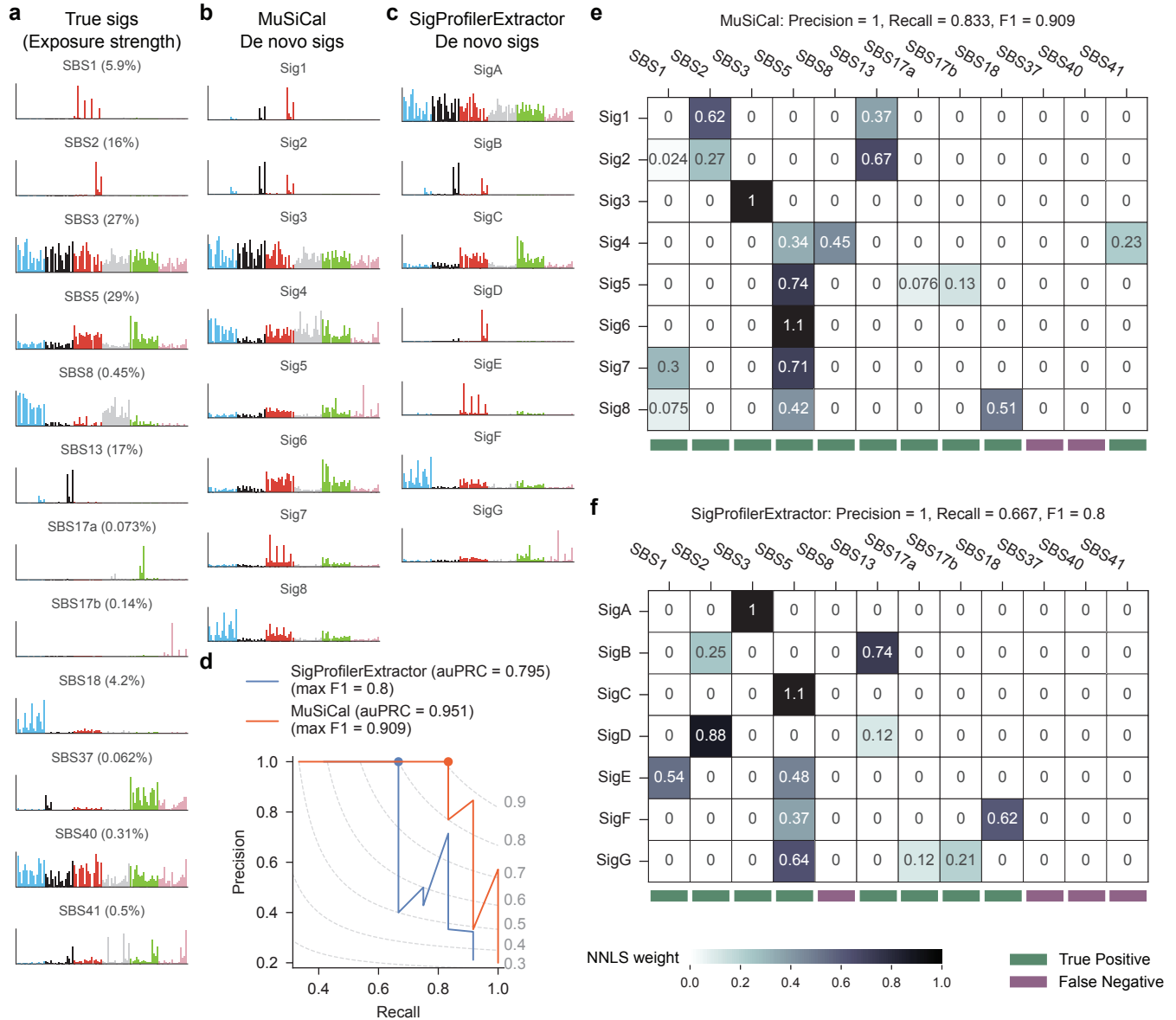
In the Supplementary Data below, we show simulated examples as in Fig. 3a, but for the other 24 tumor types. Specifically, the true signatures were plotted in panel (a), where the percentages below signature names denote exposure strengths of corresponding signatures. *De novo* signatures extracted by MuSiCal were plotted in panel (b). *De novo* signatures extracted by SigProfilerExtractor were plotted in panel (c). The precision-recall curves (PRCs) for both methods were plotted in panel (d), with area under PRC (auPRC) annotated. The matching result corresponding to the largest achieved F1 score was shown in panels (e) and (f) for MuSiCal and SigProfilerExtractor, respectively. Tumor types were ordered as in Fig. 3b.

Bladder-TCC



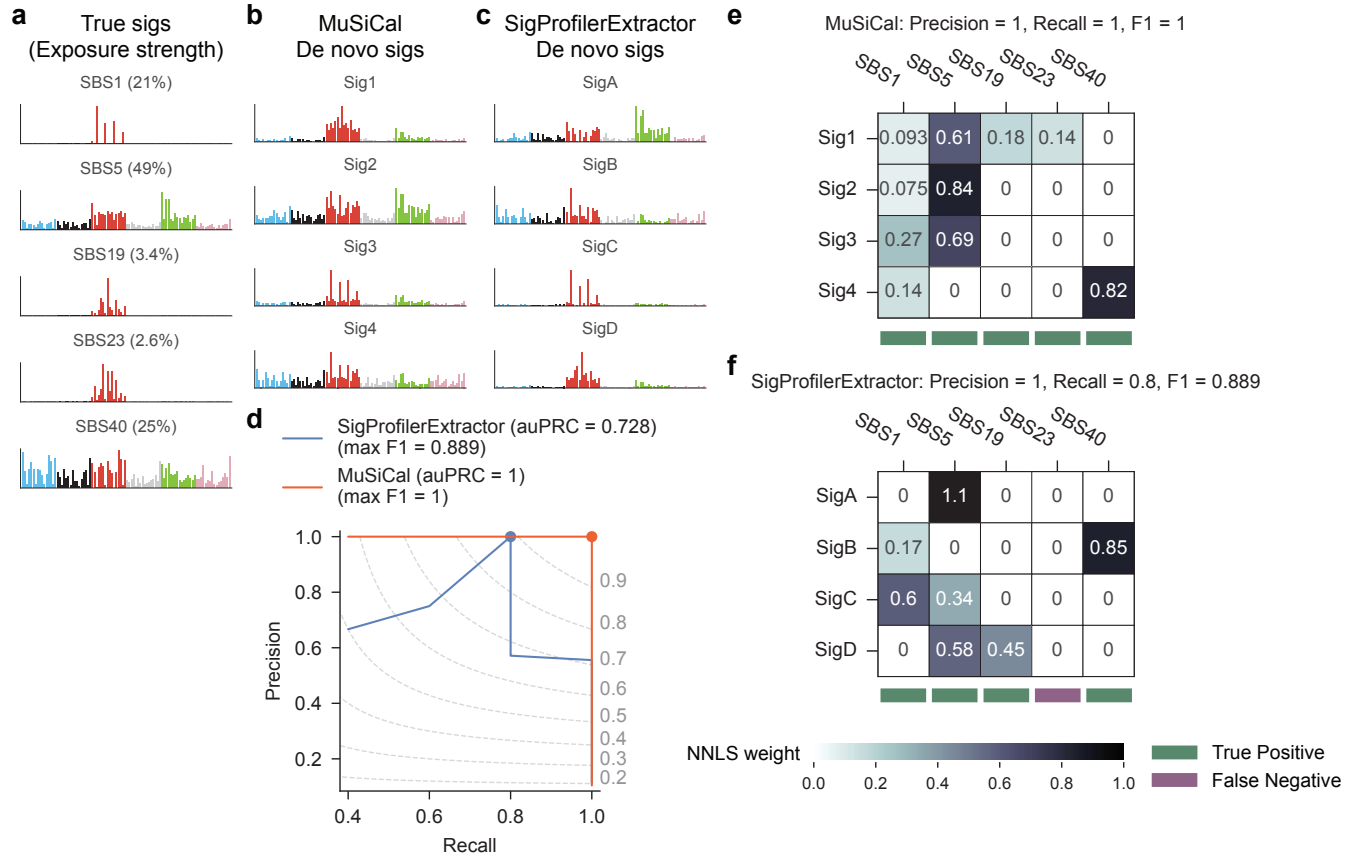
Supplementary Data Fig. 1 Same as Fig. 3a, but for Bladder-TCC.

Breast-AdenoCA



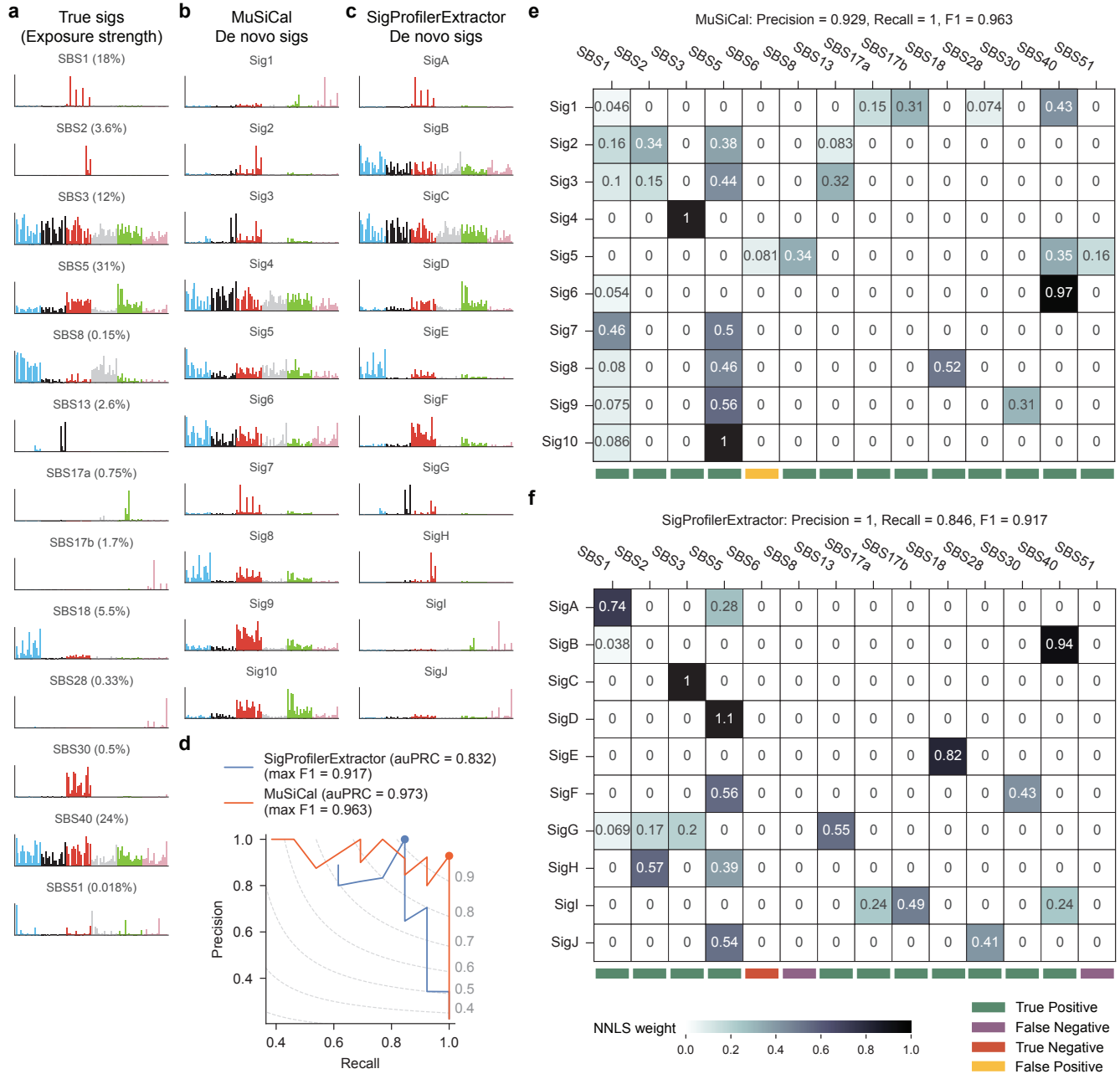
Supplementary Data Fig. 2 Same as Fig. 3a, but for Breast-AdenoCA.

CNS-PiloAstro



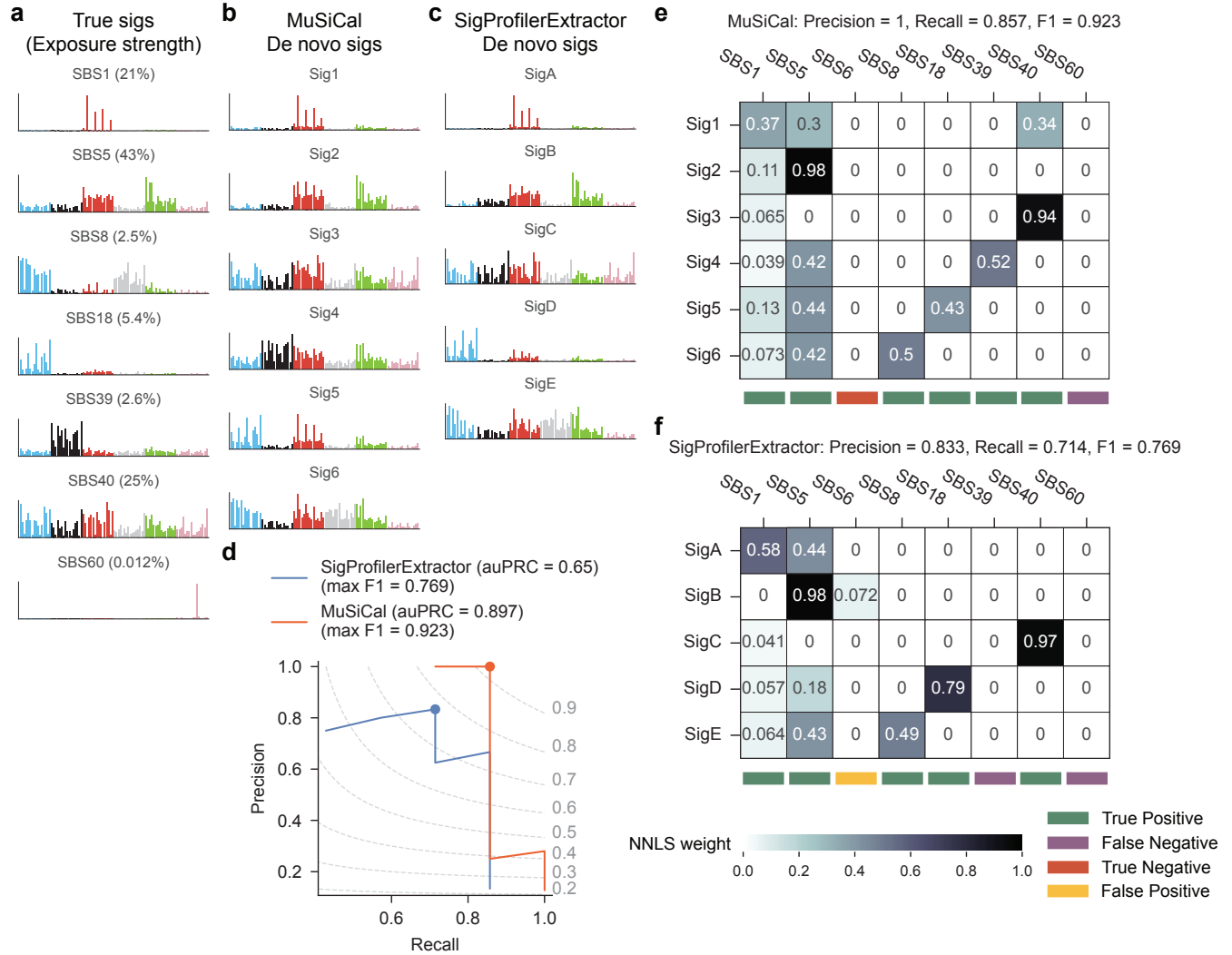
Supplementary Data Fig. 3 Same as Fig. 3a, but for CNS-PiloAstro.

Panc-AdenoCA



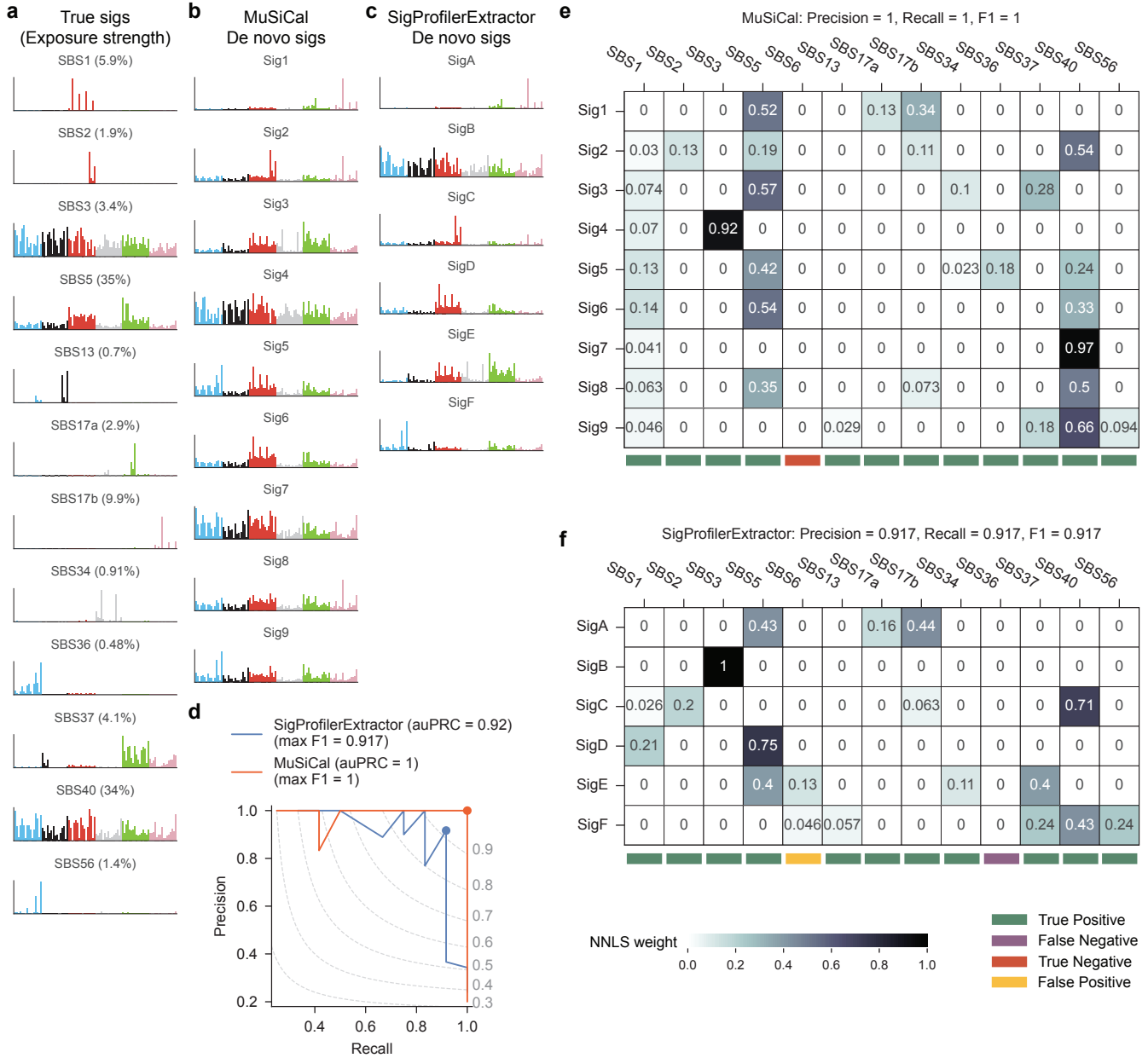
Supplementary Data Fig. 4 Same as Fig. 3a, but for Panc-AdenoCA.

CNS-Medullo



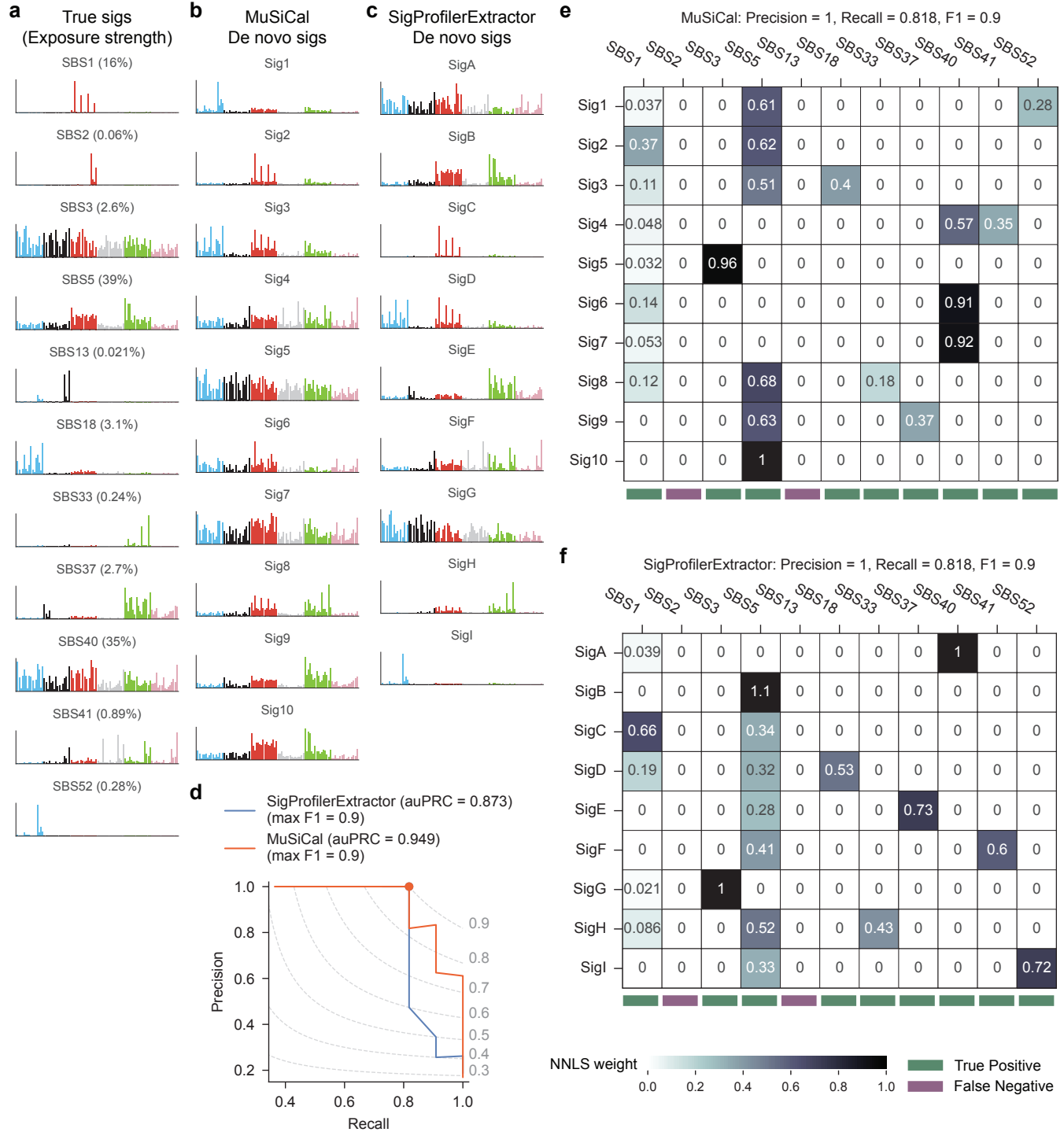
Supplementary Data Fig. 5 Same as Fig. 3a, but for CNS-Medullo.

Lymph-BNHL



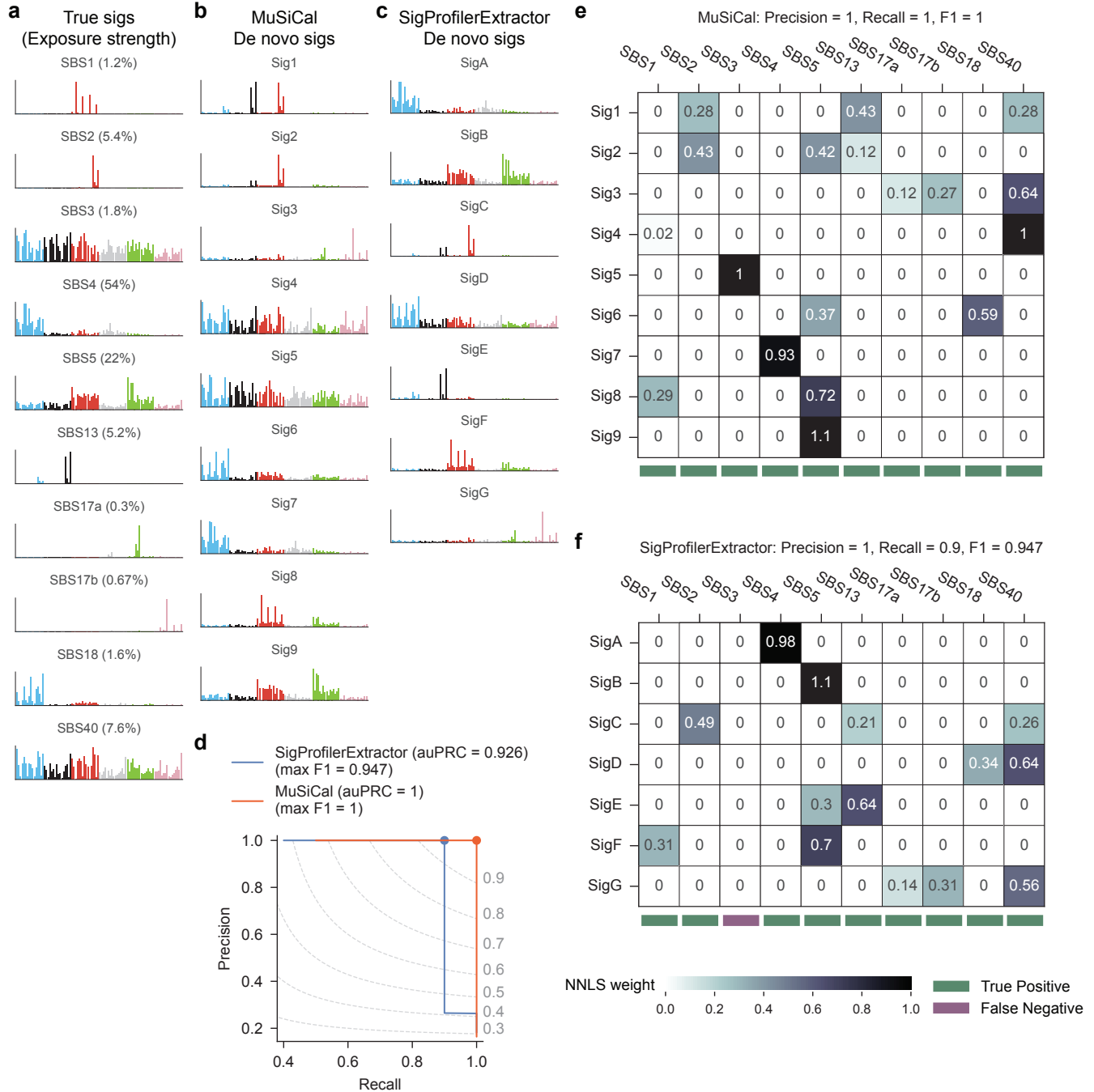
Supplementary Data Fig. 6 Same as Fig. 3a, but for Lymph-BNHL.

Prost-AdenoCA



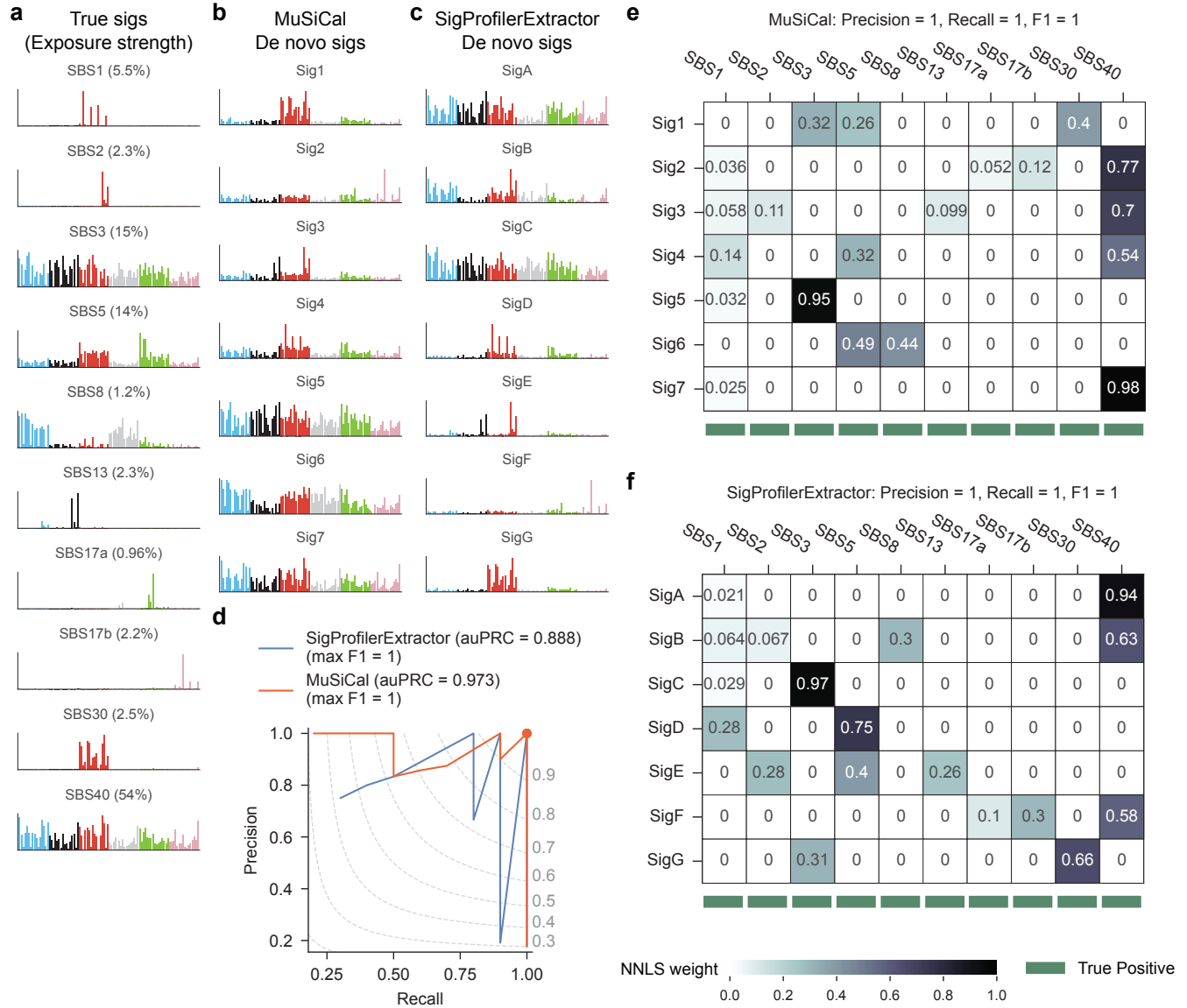
Supplementary Data Fig. 7 Same as Fig. 3a, but for Prost-AdenoCA.

Lung-AdenoCA



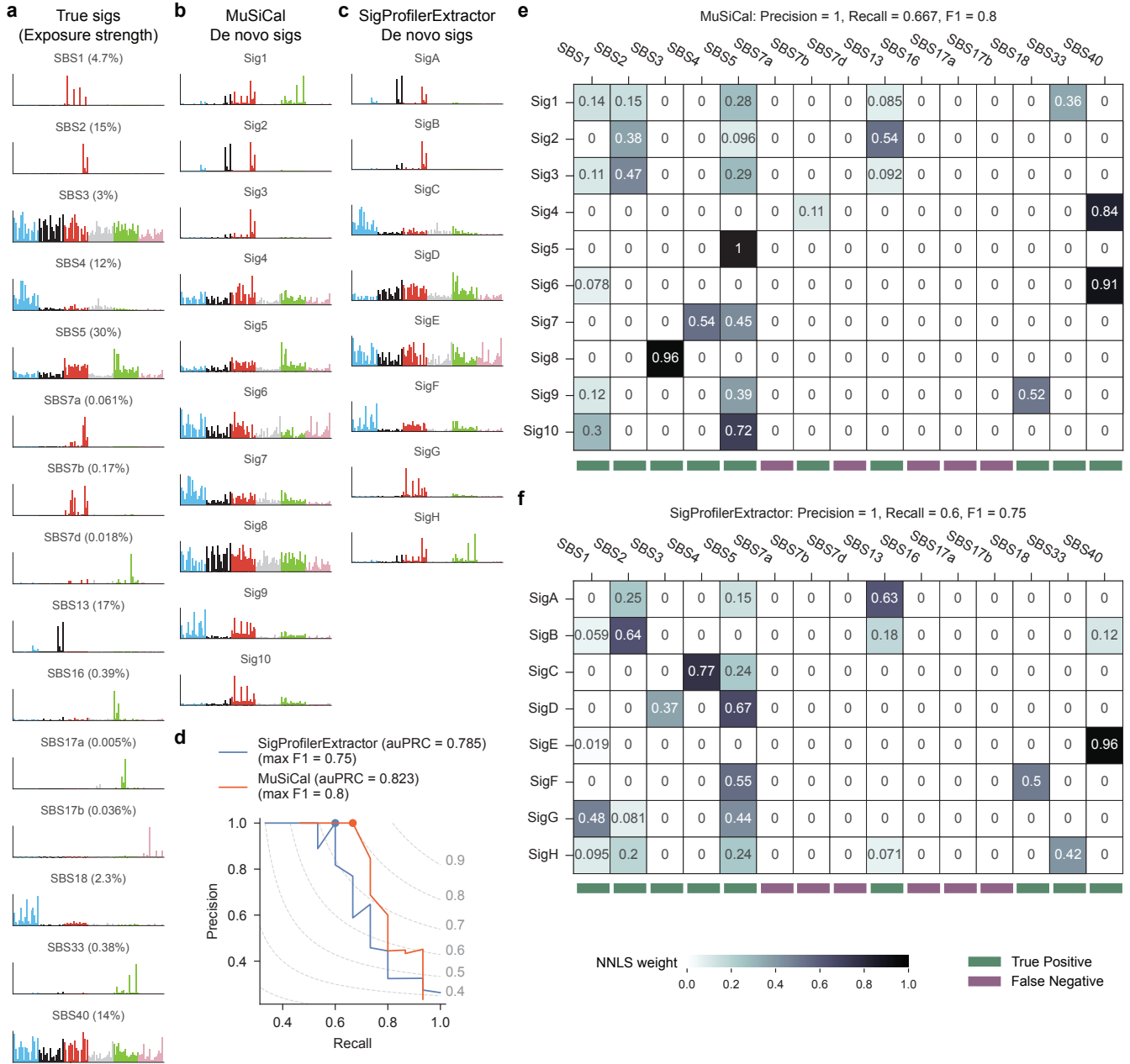
Supplementary Data Fig. 8 Same as Fig. 3a, but for Lung-AdenoCA.

Bone-Osteosarc



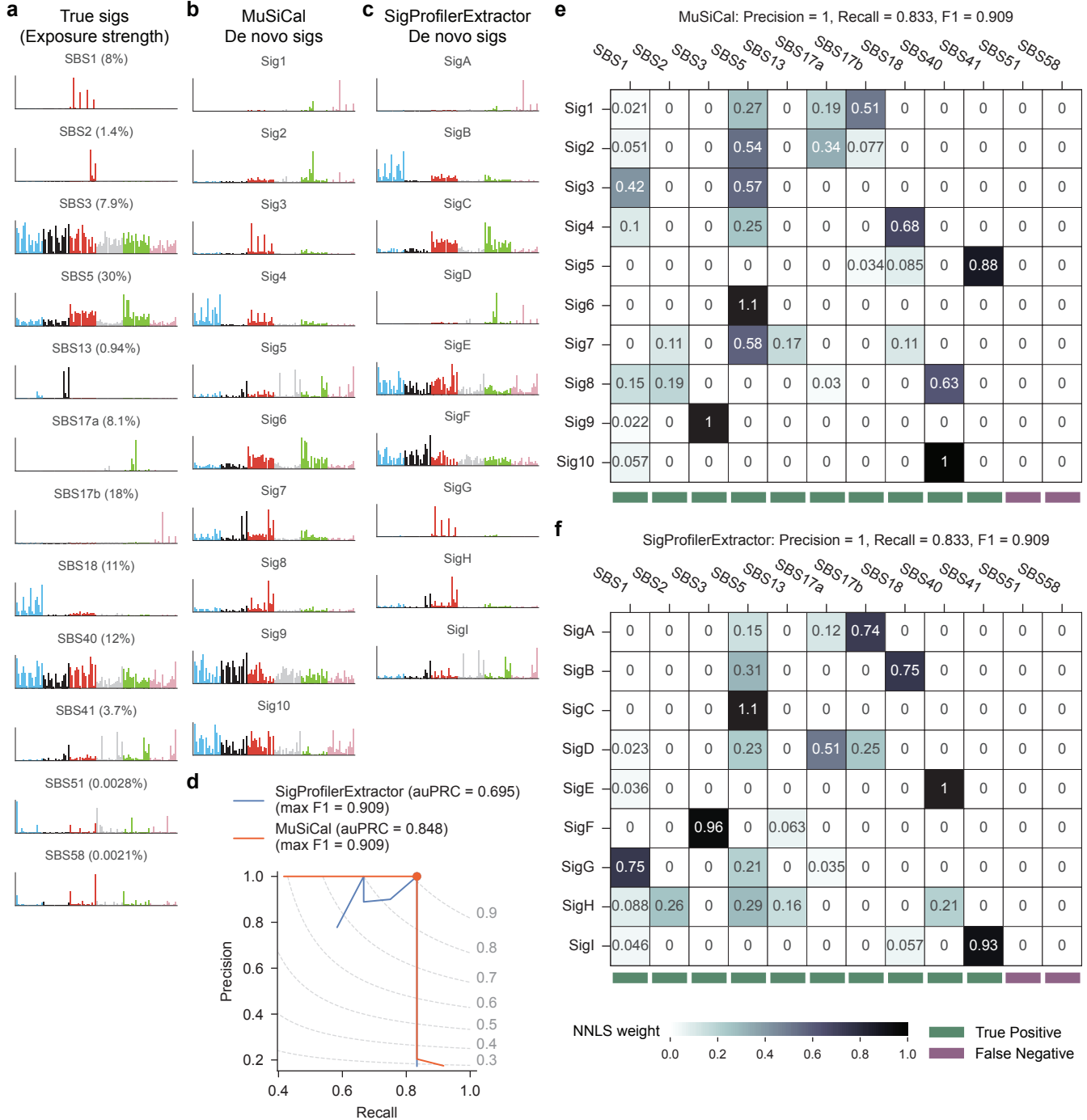
Supplementary Data Fig. 9 Same as Fig. 3a, but for Bone-Osteosarc.

Head-SCC



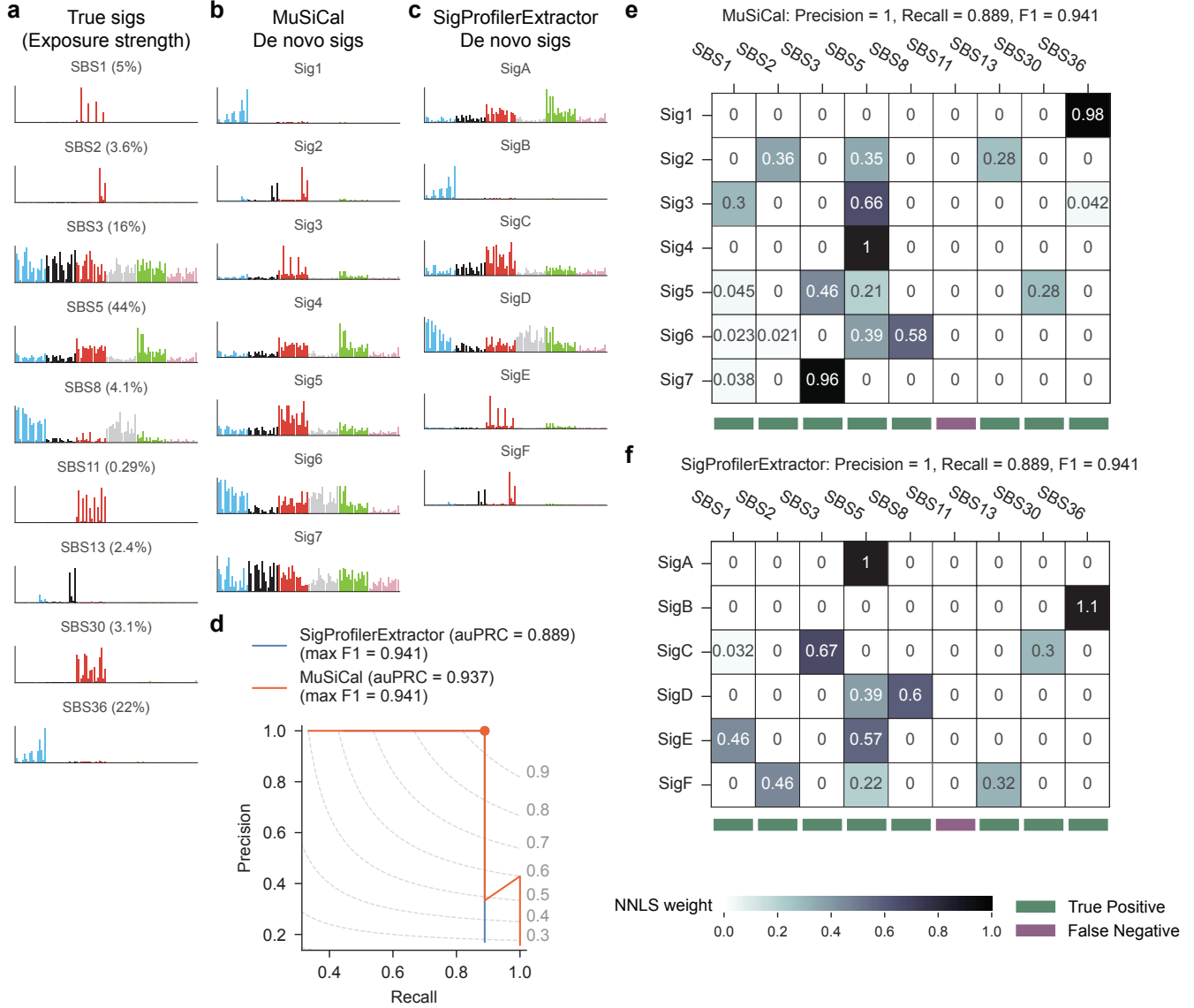
Supplementary Data Fig. 10 Same as Fig. 3a, but for Head-SCC.

Stomach-AdenoCA



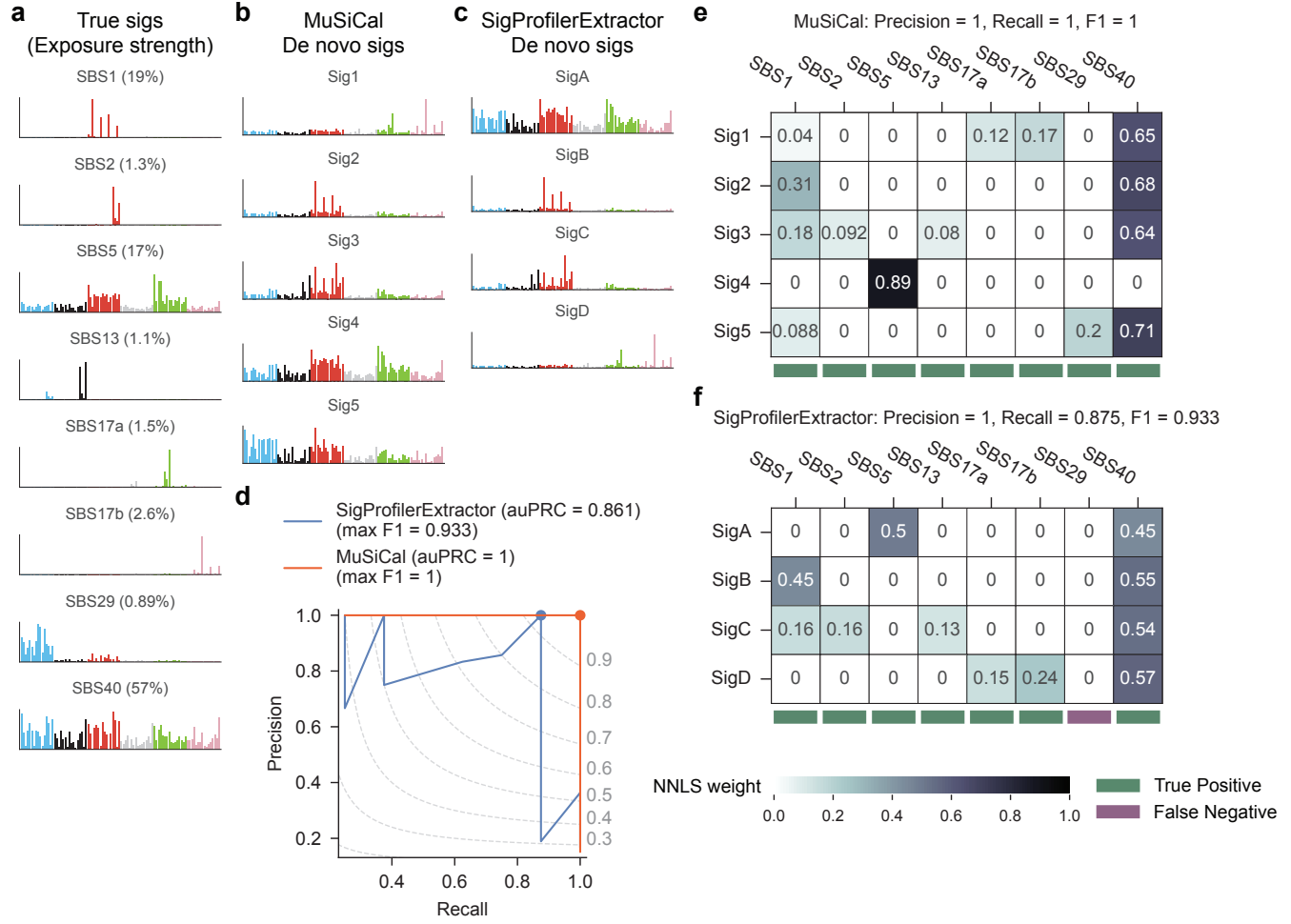
Supplementary Data Fig. 11 Same as Fig. 3a, but for Stomach-AdenoCA.

Panc-Endocrine



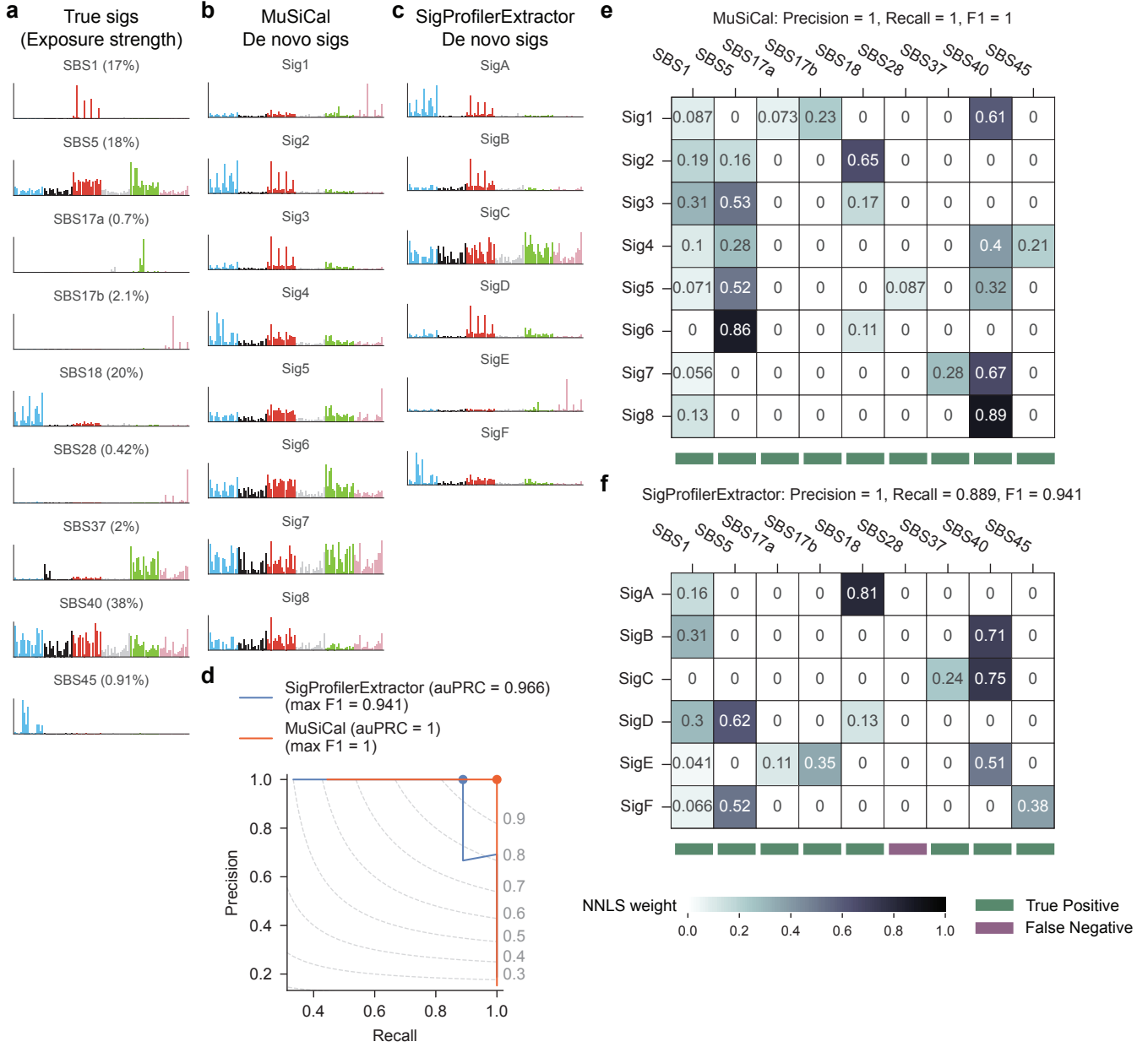
Supplementary Data Fig. 12 Same as Fig. 3a, but for Panc-Endocrine.

Kidney-ChRCC



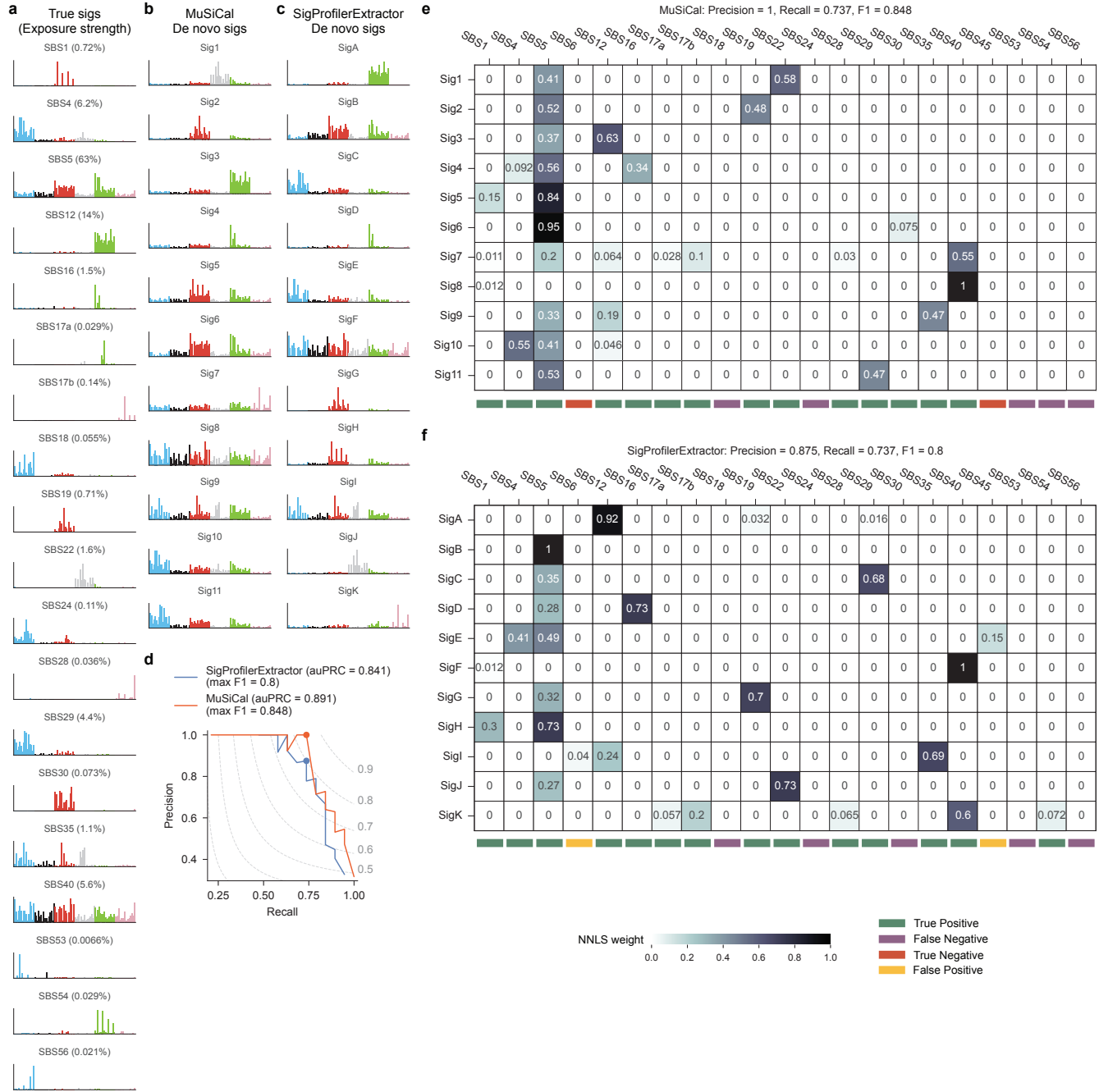
Supplementary Data Fig. 13 Same as Fig. 3a, but for Kidney-ChRCC.

ColoRect-AdenoCA



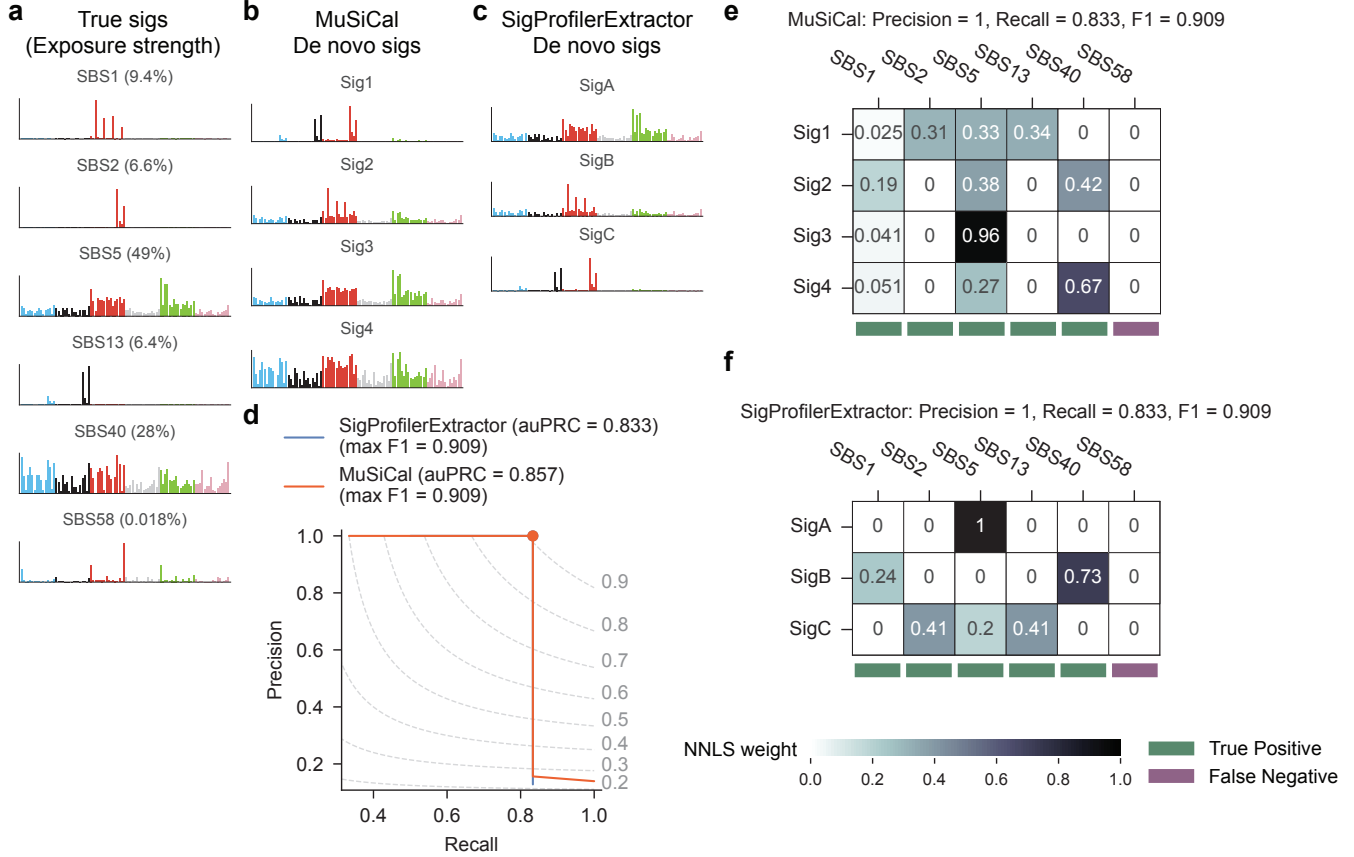
Supplementary Data Fig. 14 Same as Fig. 3a, but for ColoRect-AdenoCA.

Liver-HCC



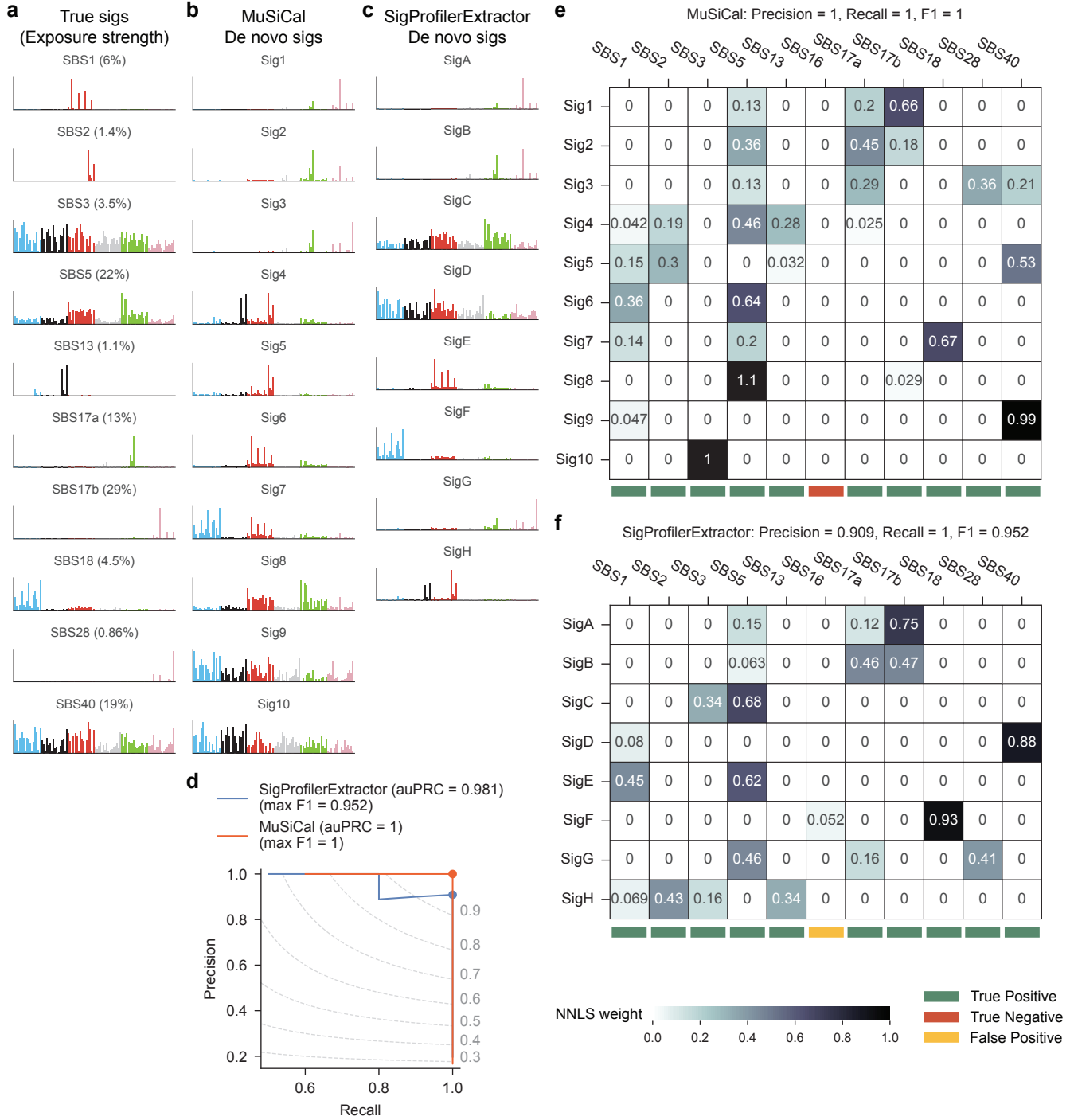
Supplementary Data Fig. 15 Same as Fig. 3a, but for Liver-HCC.

Thy-AdenoCA



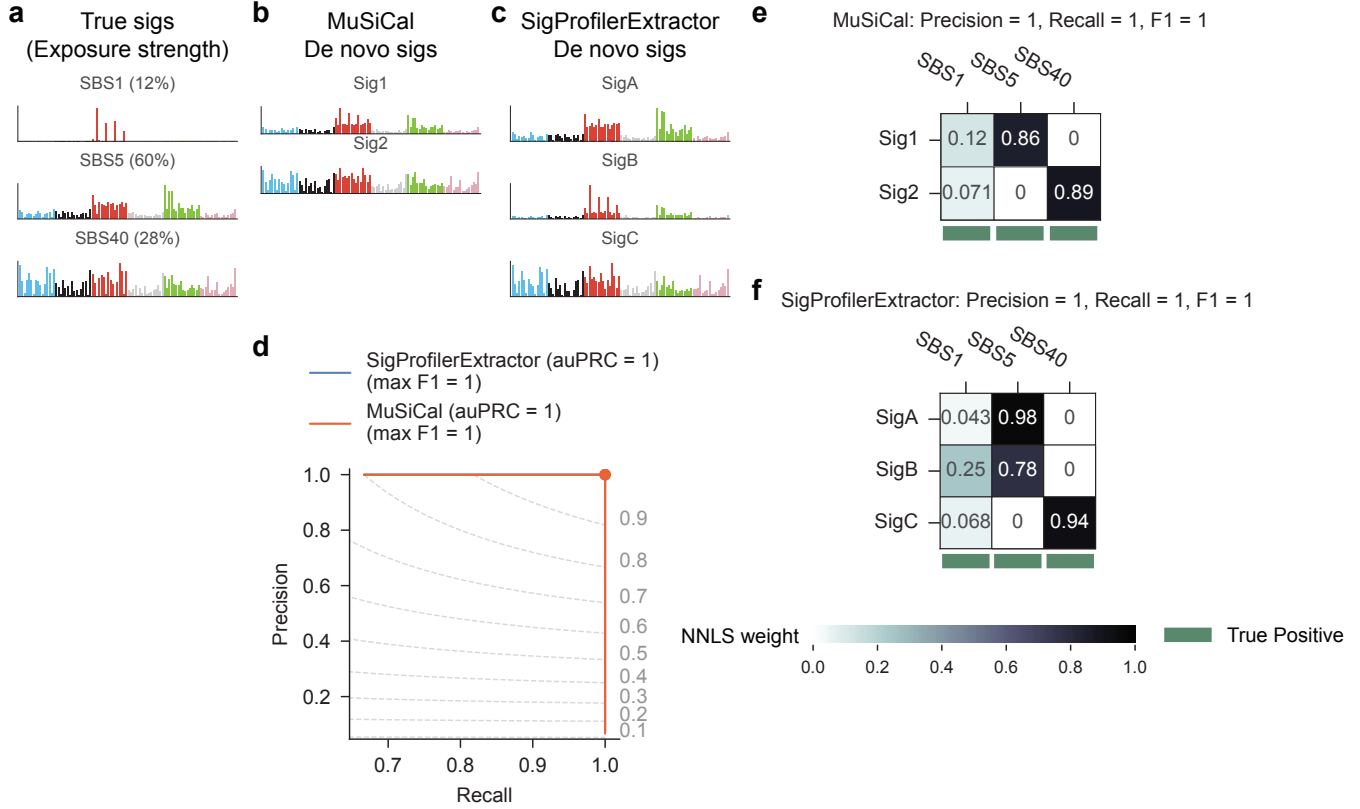
Supplementary Data Fig. 16 Same as Fig. 3a, but for Thy-AdenoCA.

Eso-AdenoCA



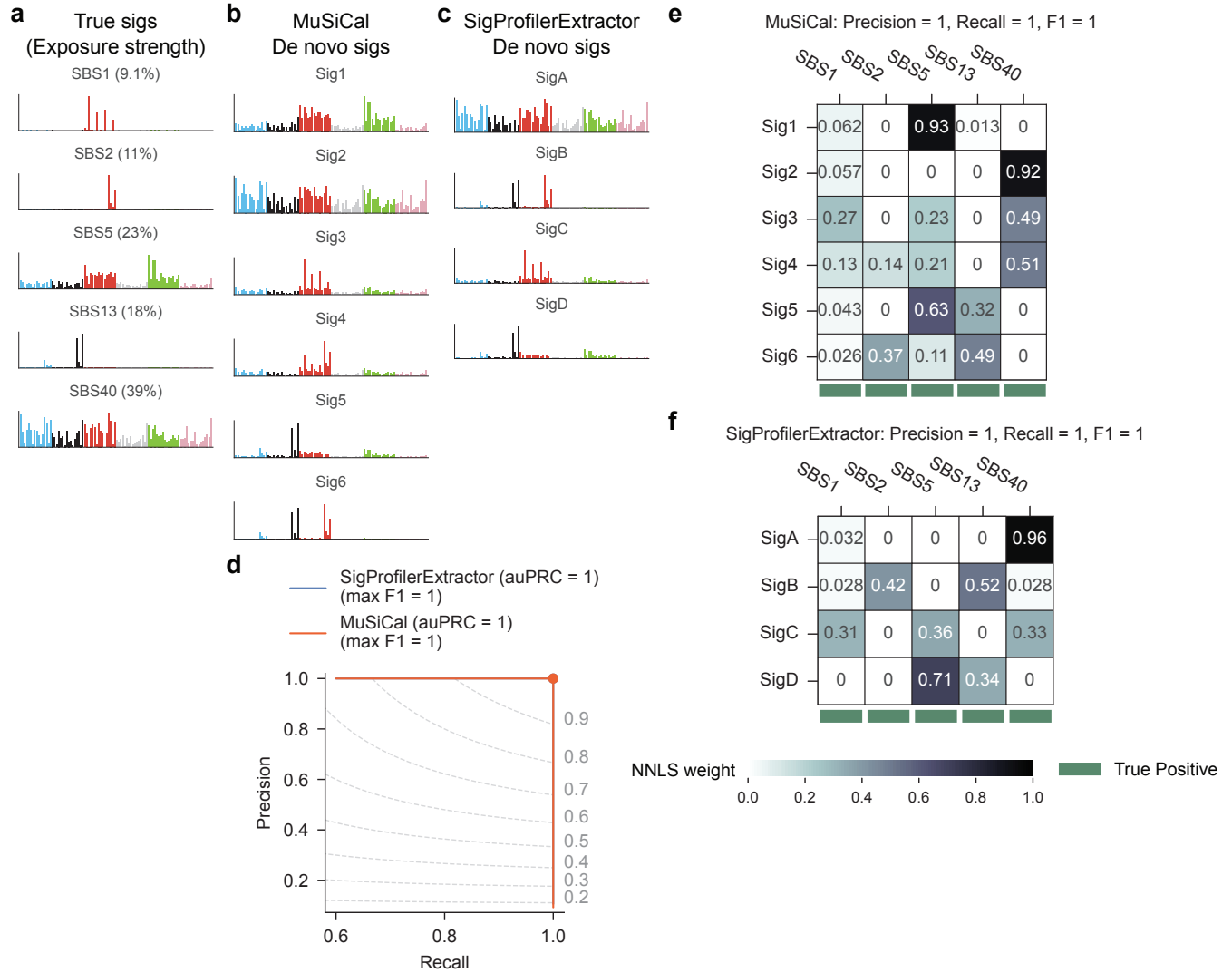
Supplementary Data Fig. 17 Same as Fig. 3a, but for Eso-AdenoCA.

Lymph-CLL



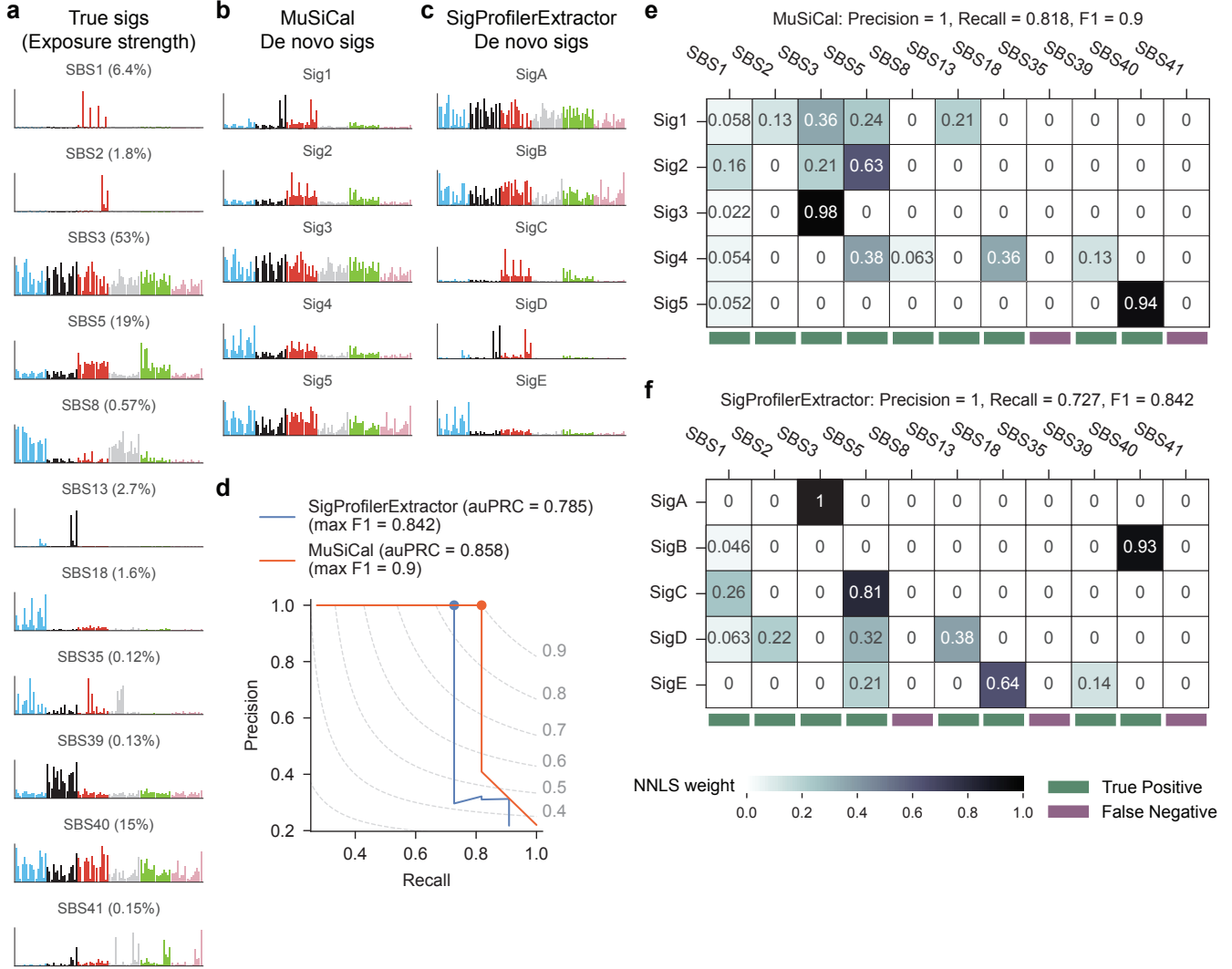
Supplementary Data Fig. 18 Same as Fig. 3a, but for Lymph-CLL.

Uterus-AdenoCA



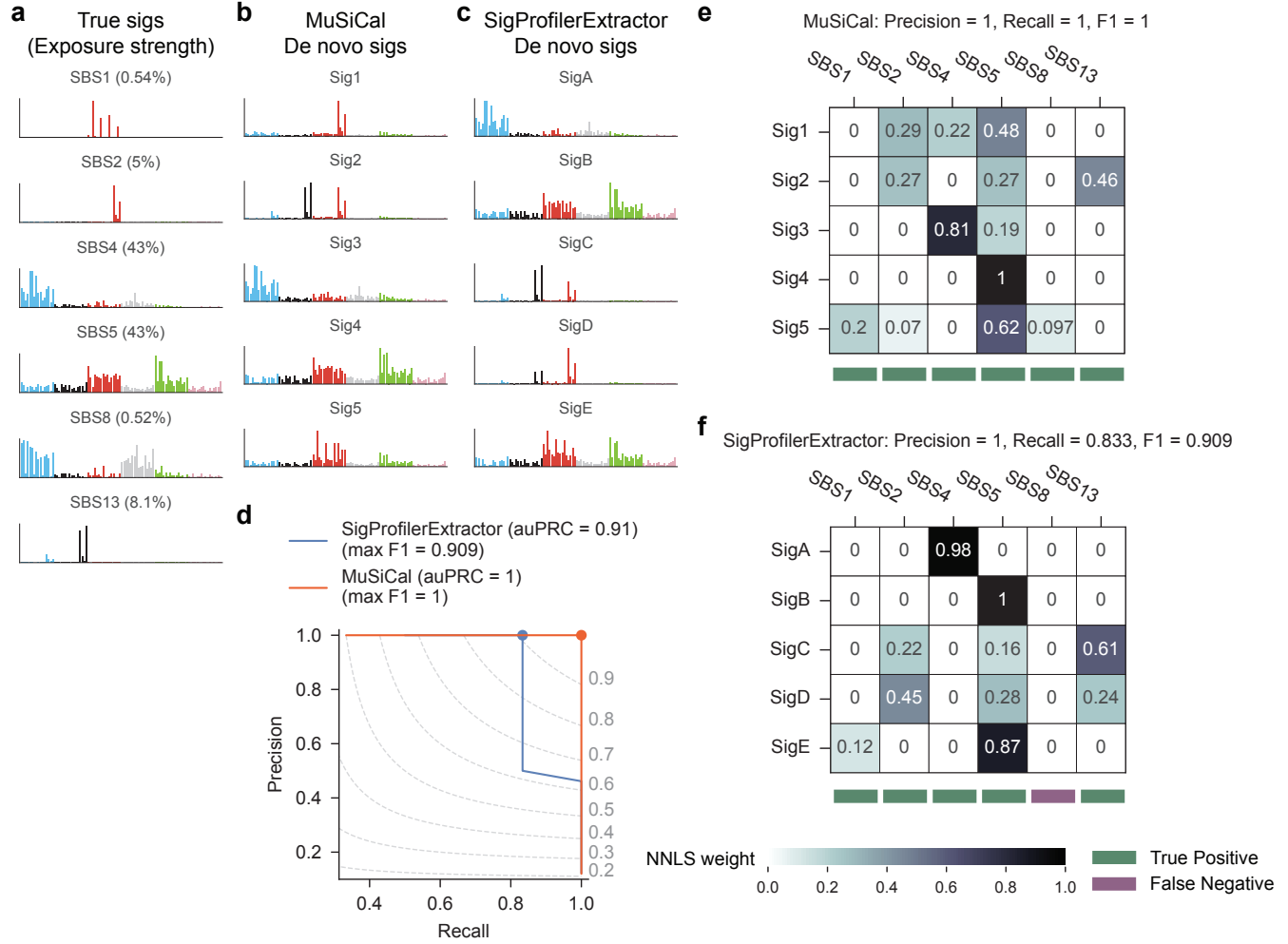
Supplementary Data Fig. 19 Same as Fig. 3a, but for Uterus-AdenoCA.

Ovary-AdenoCA



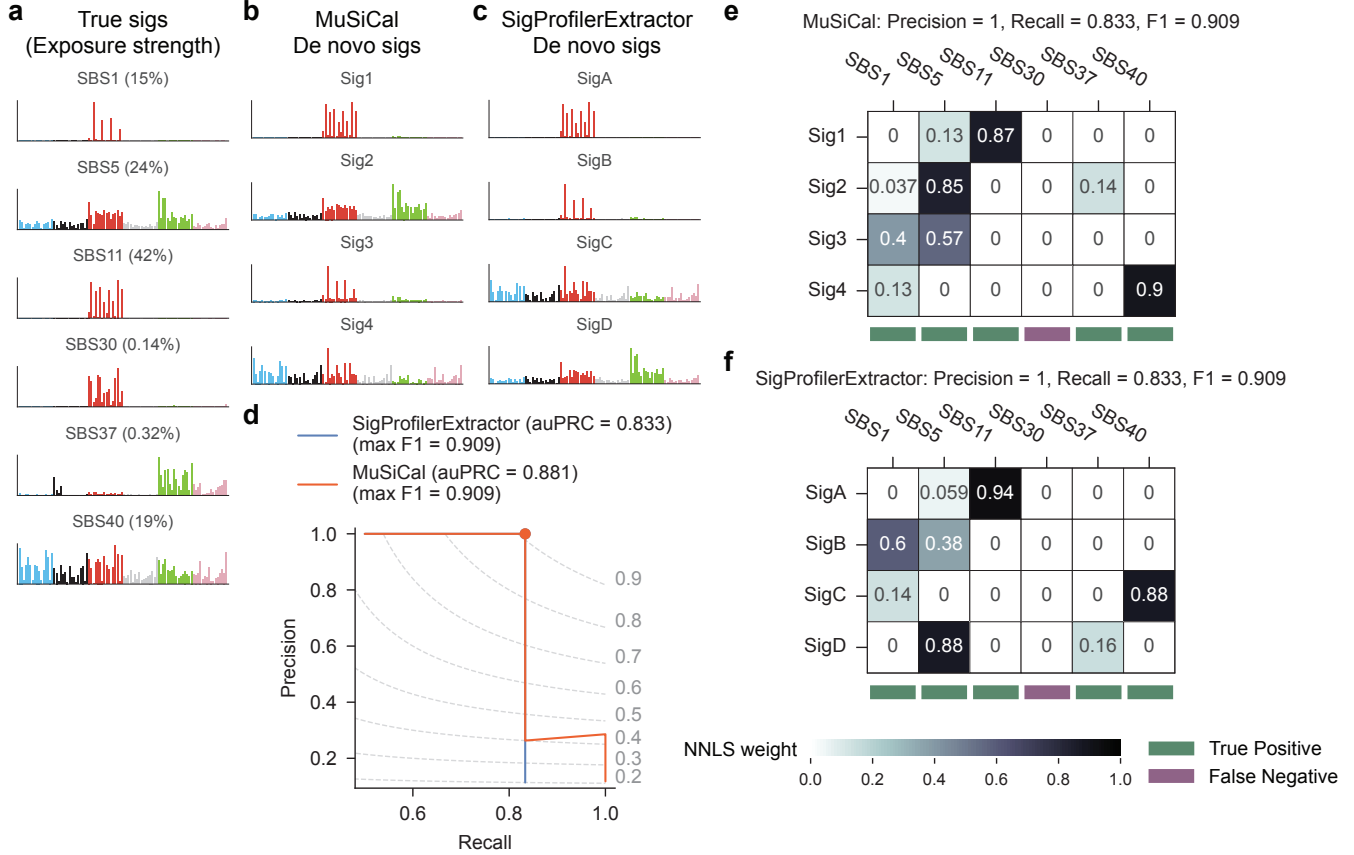
Supplementary Data Fig. 20 Same as Fig. 3a, but for Ovary-AdenoCA.

Lung-SCC



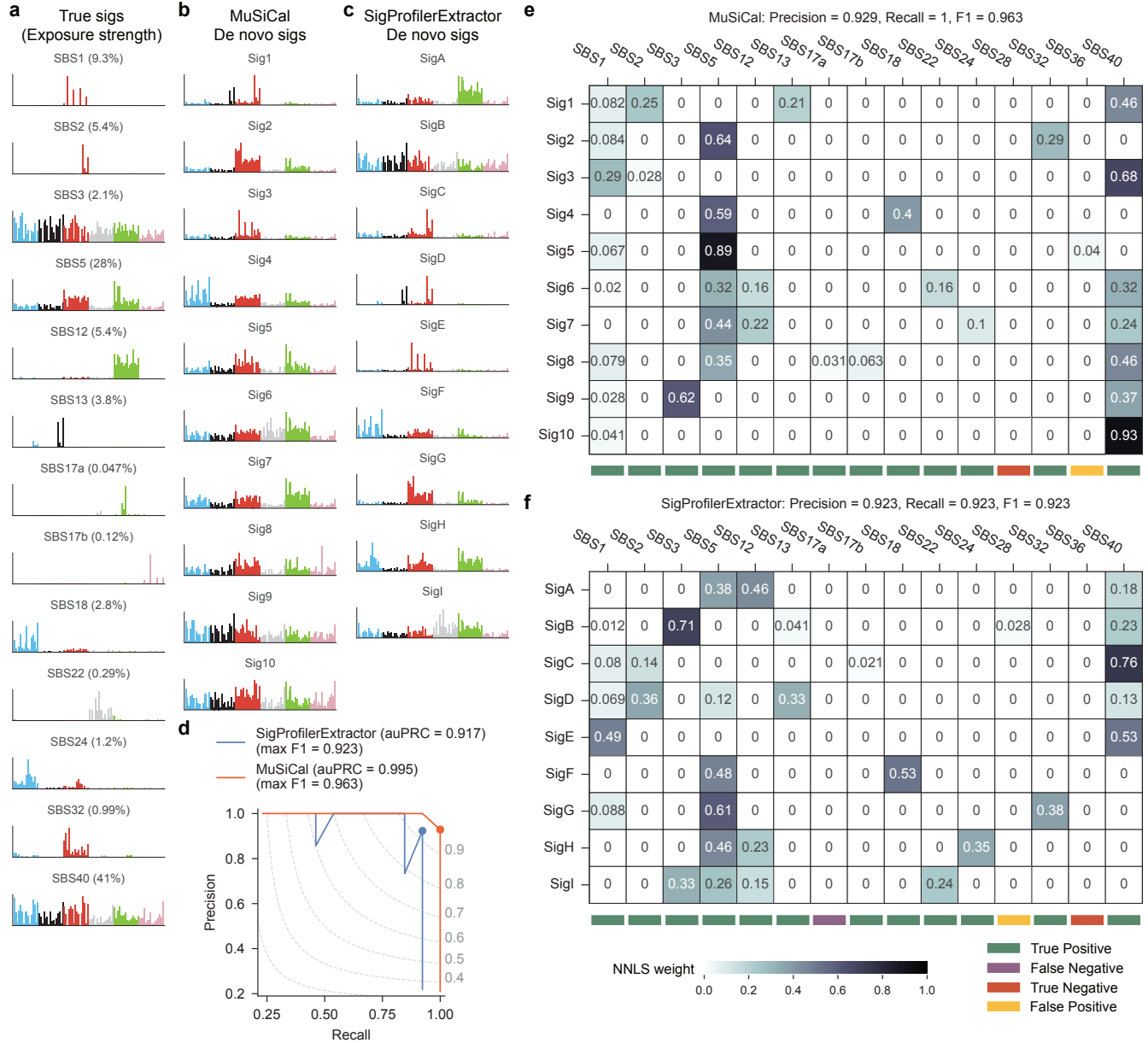
Supplementary Data Fig. 21 Same as Fig. 3a, but for Lung-SCC.

CNS-GBM



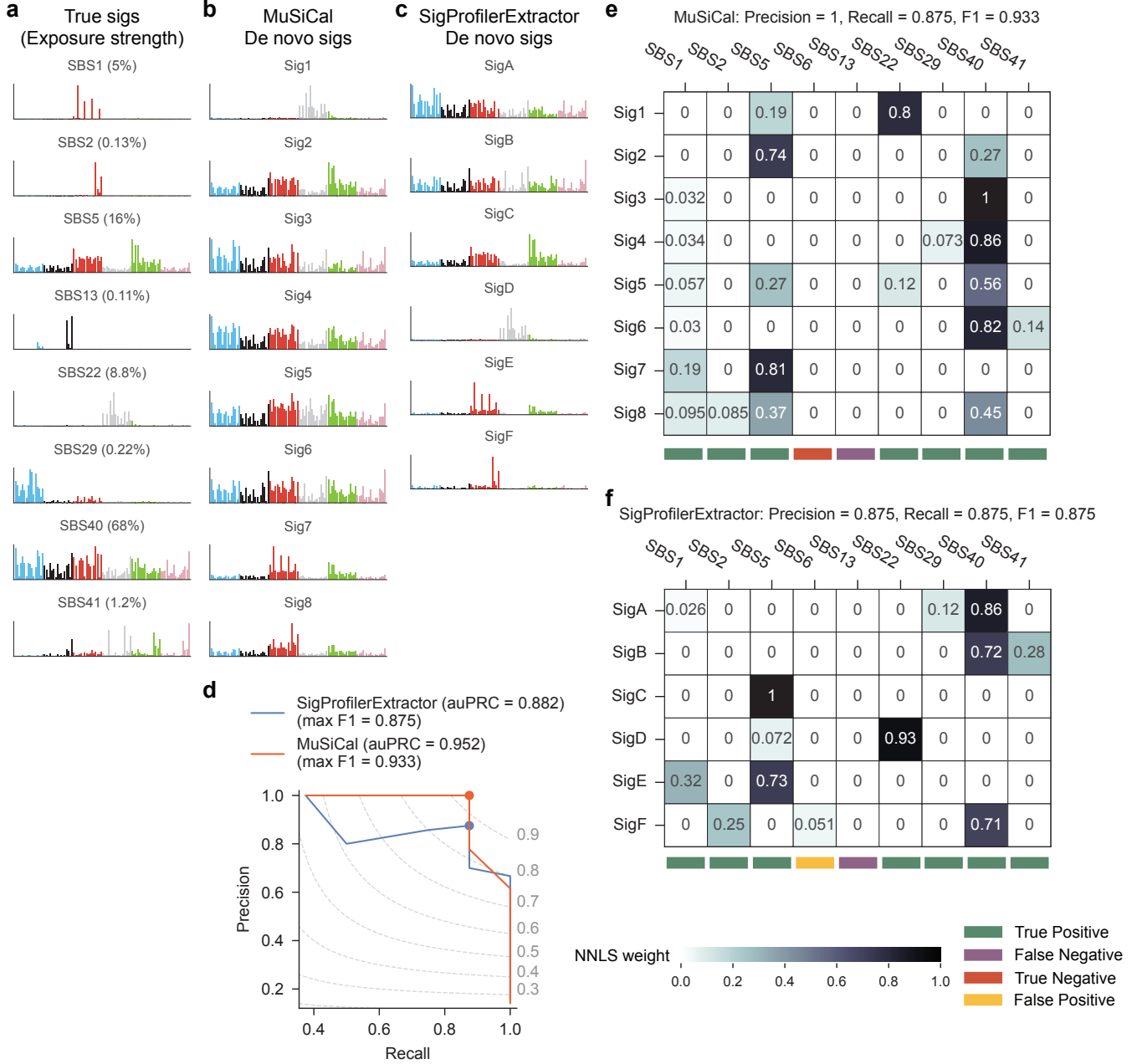
Supplementary Data Fig. 22 Same as Fig. 3a, but for CNS-GBM.

Biliary-AdenoCA



Supplementary Data Fig. 23 Same as Fig. 3a, but for Biliary-AdenoCA.

Kidney-RCC



Supplementary Data Fig. 24 Same as Fig. 3a, but for Kidney-RCC.