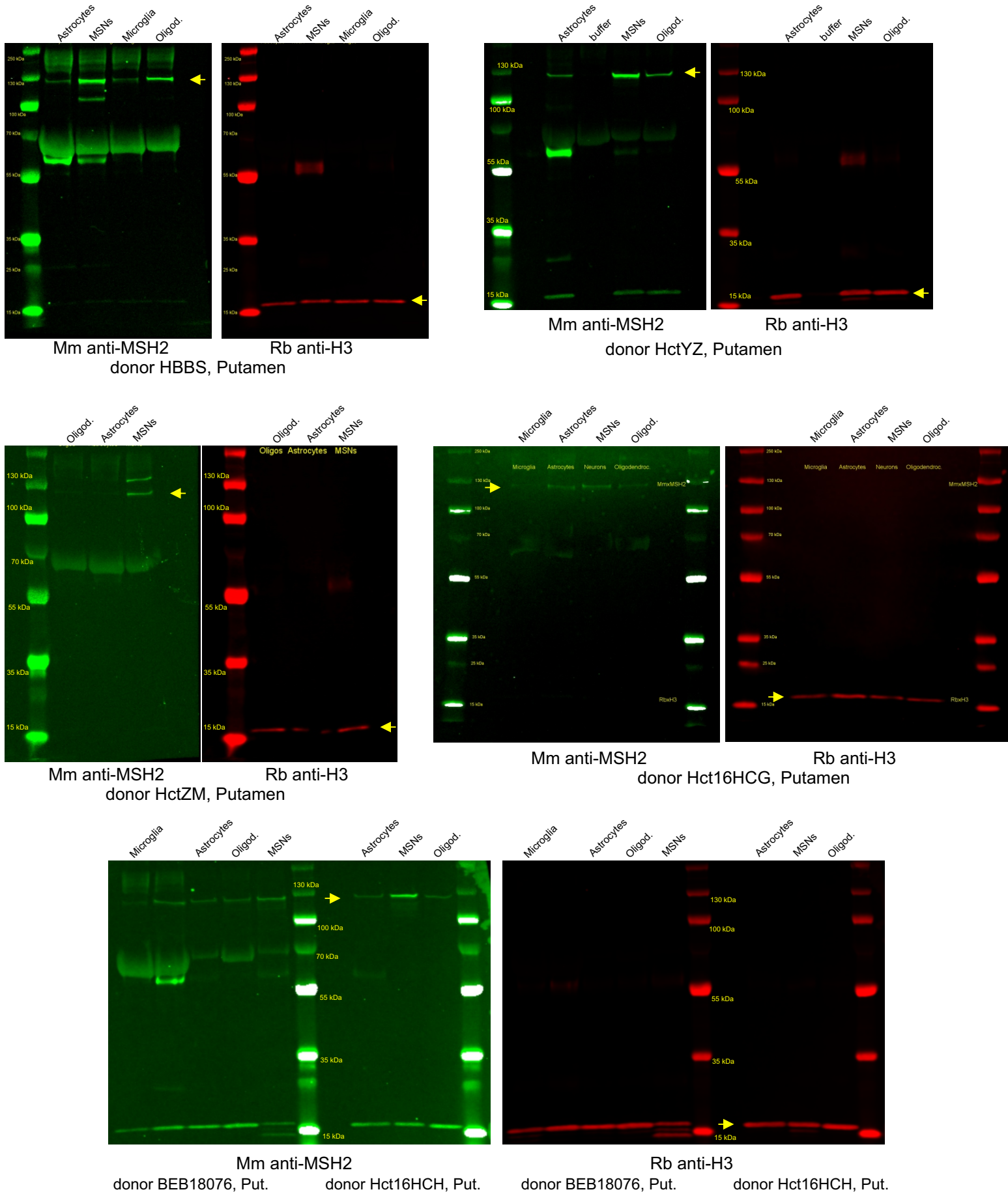


# Source Data for Figure 5

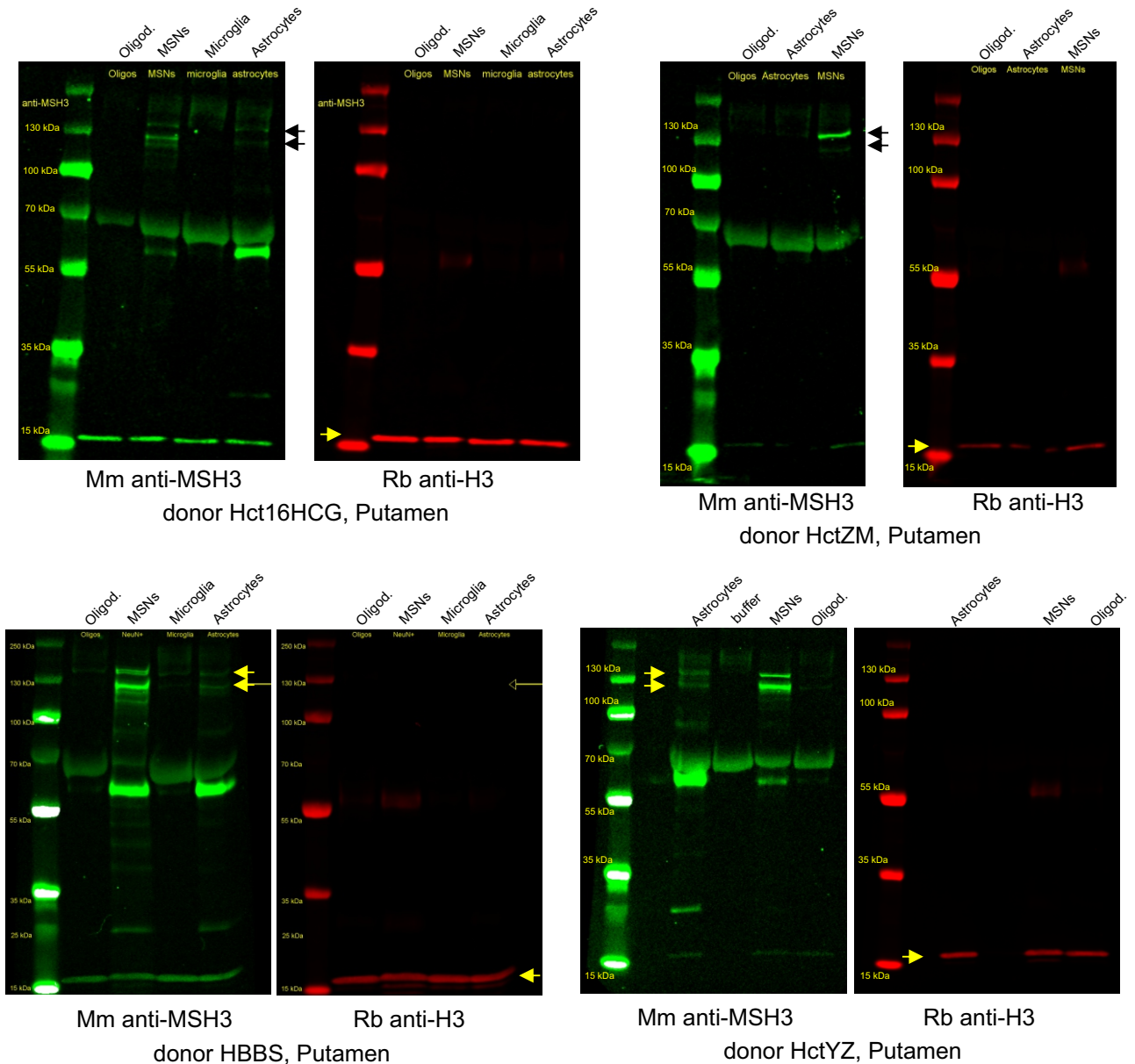
## Source data for anti-MSH2 western blot quantification



**Source Data for Figure 5.** Arrows point to MSH2 and H3 signal on blots probed with anti-MSH2 and anti-H3, respectively. Additional bands likely represent BSA present in the buffer (below 70 kDa) and heavy chain of antibodies used for staining nuclei for FANS (around 60 kDa).

# Source Data for Figure 5

## Source data for anti-MSH3 western blot quantification



**Source Data for Figure 5.** Arrows point to MSH3 and H3 signal on blots probed with anti-MSH3 and anti-H3, respectively. Additional bands likely represent BSA present in the buffer (below 70 kDa) and heavy chain of antibodies used for staining nuclei for FANS (around 60 kDa).