

SUPPLEMENTARY

Table S1 | Detailed clinico-demographic data of ENIGMA-Epilepsy TLE cohort

Case-control cohort	Age (years)	Sex (F/M)	Age of onset (years)	Disease duration (years)	Engel score (I)
HC (<i>n</i> = 886)	36.0 ± 11.7	508/378	–	–	–
L TLE MTS (<i>n</i> =280)	39.0 ± 10.8	161/119	14.9 ± 11.8*	23.8 ± 13.5*	102
R TLE MTS (<i>n</i> =226)	39.8 ± 10.9	130/96	15.1 ± 11.3*	24.4 ± 13.8*	66
L TLE non-lesional (<i>n</i> = 150)	36.0 ± 10.5	93/133	19.4 ± 11.4*	16.8 ± 12.0*	23
R TLE non-lesional (<i>n</i> =113)	36.5 ± 11.5	71/42	19.9 ± 13.4*	14.8 ± 10.9*	25

Age, age of onset, and disease duration are presented in mean ± SD. *Clinical information available: a) age of onset: L-TLE MTS = 8/280, R-TLE MTS = 11/130, L-TLE non-lesional = 8/150, R-TLE non-lesional 7/113; b) disease duration: L-TLE MTS = 32/280, R-TLE MTS = 24/130, L-TLE non-lesional 16/150, R-TLE non-lesional 18/113.

TABLE S2 | White matter tract labels

Group	Tract abbreviation	Full name
Corpus Callosum	SCC	Splenium of the corpus callosum
	BCC	Body of the corpus callosum
	GCC	Genu of the corpus callosum
Limbic	FX	Fornix (column and body)
	FXST	Fornix (cres) / Stria terminalis
	CGH	Cingulum (hippocampus)
	CCG	Cingulum (cingulate gyrus)
	UNC	Uncinate fasciculus
Cortical-subcortical	ALIC	Anterior limb of the internal capsule
	PLIC	Posterior limb of the internal capsule
	RLIC	Retrolenticular part of the internal capsule
	ACR	Anterior corona radiata
	SCR	Superior corona radiata
	PCR	Posterior corona radiata
	PTR	Posterior thalamic radiation
	EC	External capsule
	CST	Corticospinal tract
Cortical	SS	Sagittal stratum
	SLF	Superior longitudinal fasciculus
	SFO	Superior fronto-occipital fasciculus
	IFO	Inferior fronto-occipital fasciculus

FIGURE S3 | Sensitivity analyses with age-sliding window ranges

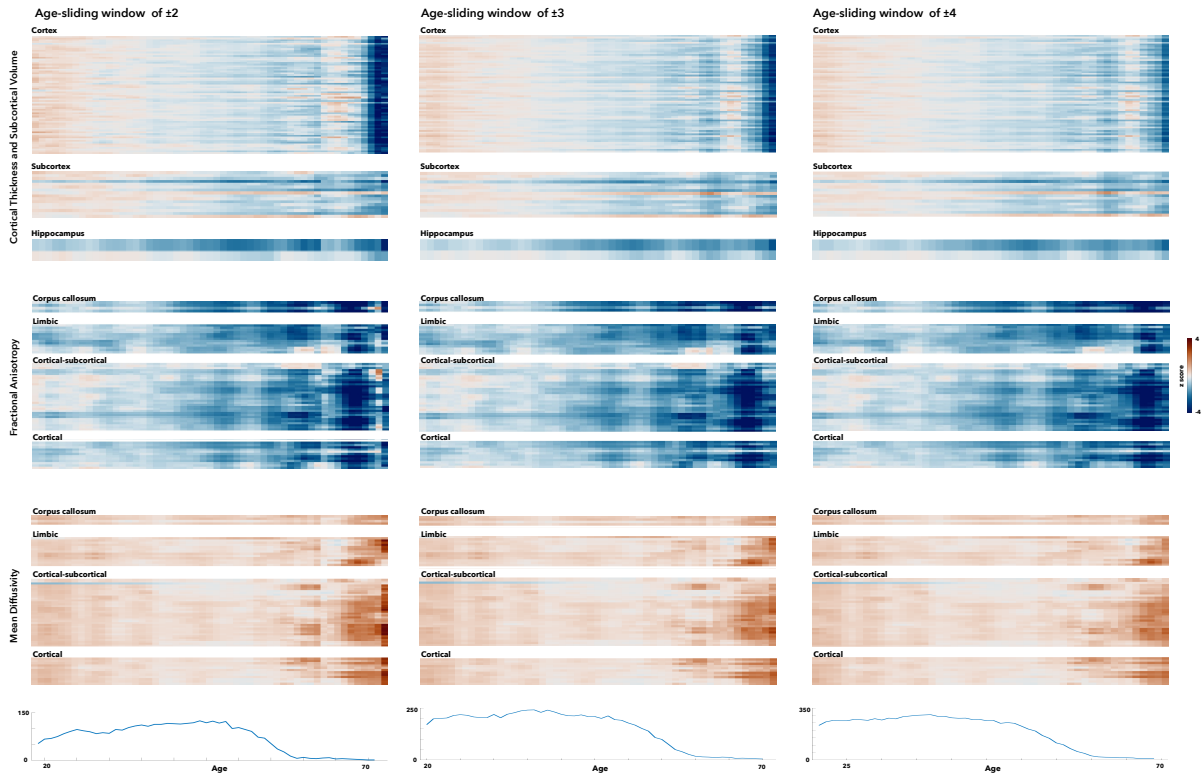


FIGURE S4 | Covariance of lifespan trajectories separated by ipsilateral and contralateral structures and regions

