

Figure S1

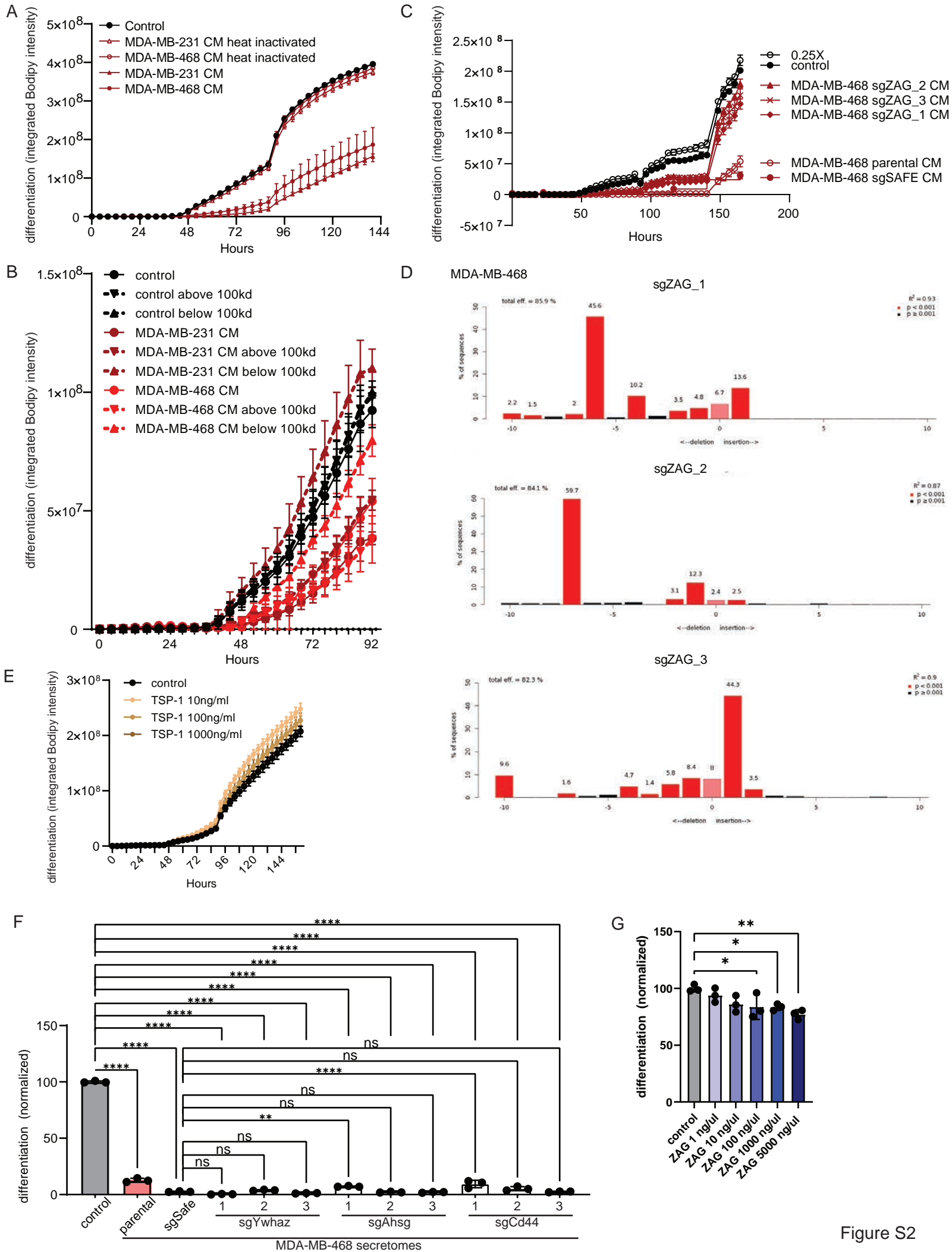
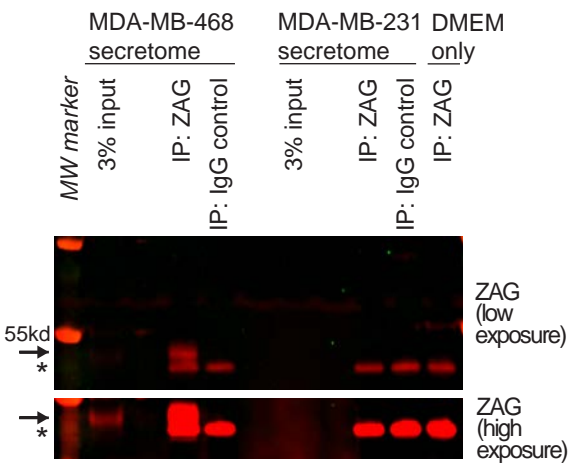
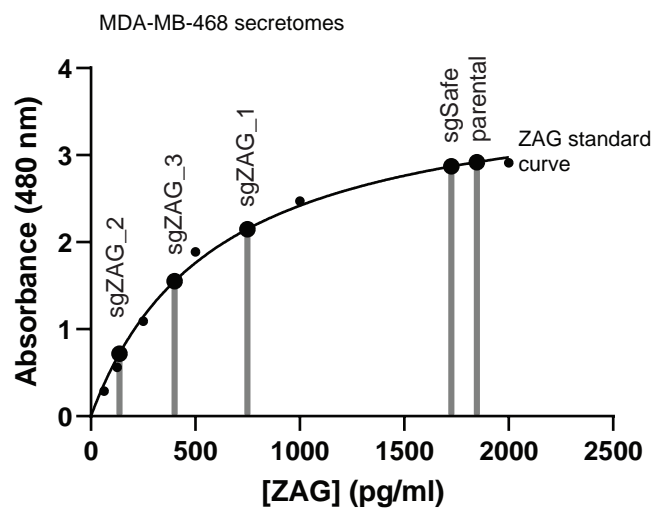


Figure S2

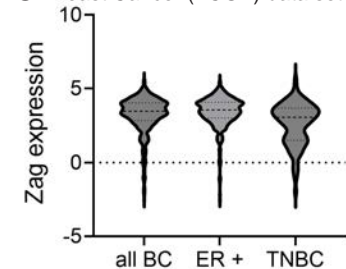
A



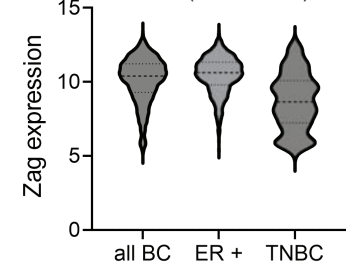
B



C Breast Cancer (TCGA) data set

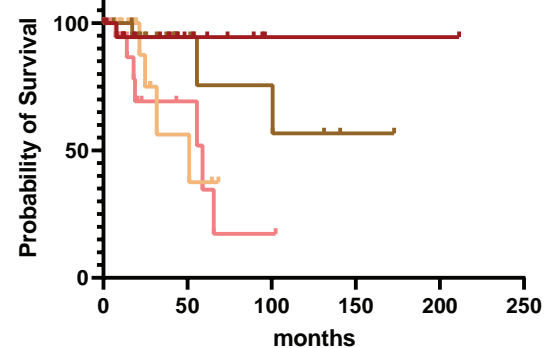
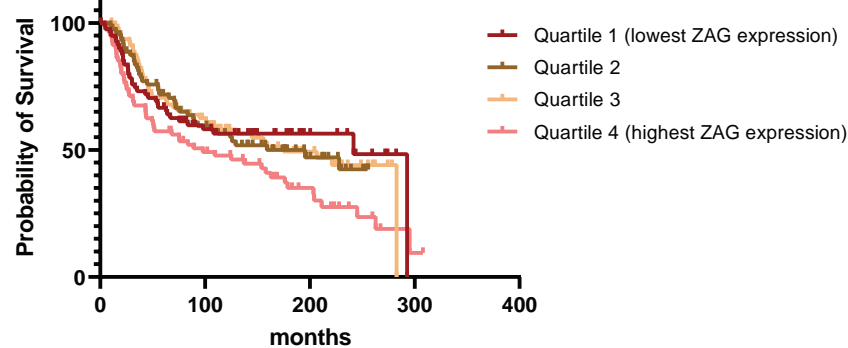


Breast Cancer (METABRIC) data set



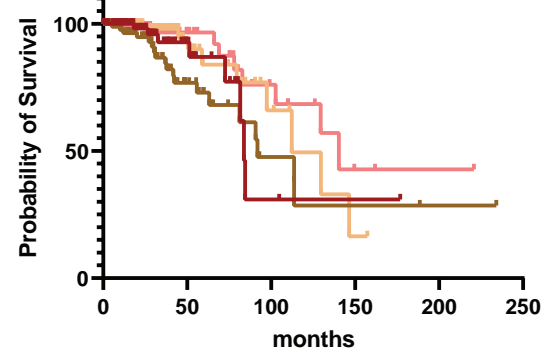
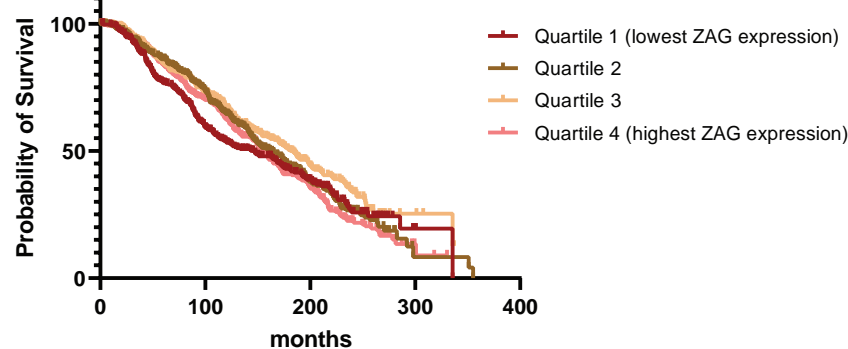
D

## Triple-negative Breast Cancer - survival by ZAG expression

Breast Invasive Carcinoma (TCGA, Nature 2012) data set  
Logrank Test p-value: 0.0108Breast Cancer (METABRIC, Nature 2012 & Nat Commun 2016) data set  
Logrank Test p-value: 0.0870

E

## ER-positive Breast Cancer - survival by ZAG expression

Breast Invasive Carcinoma (TCGA, Nature 2012) data set  
Logrank Test p-value: 0.0608Breast Cancer (METABRIC, Nature 2012 & Nat Commun 2016) data set  
Logrank Test p-value: 0.0235

F

## all Breast Cancer - survival by ZAG expression

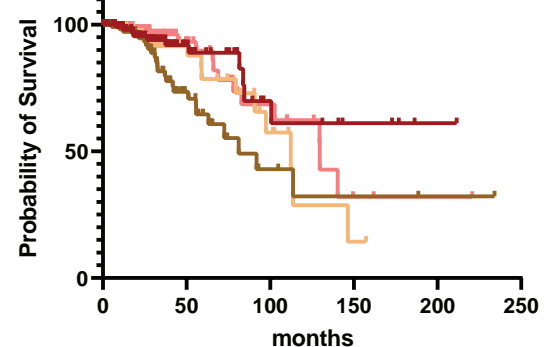
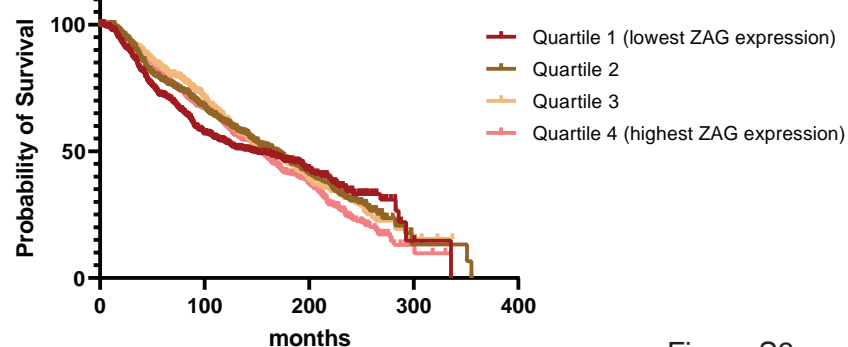
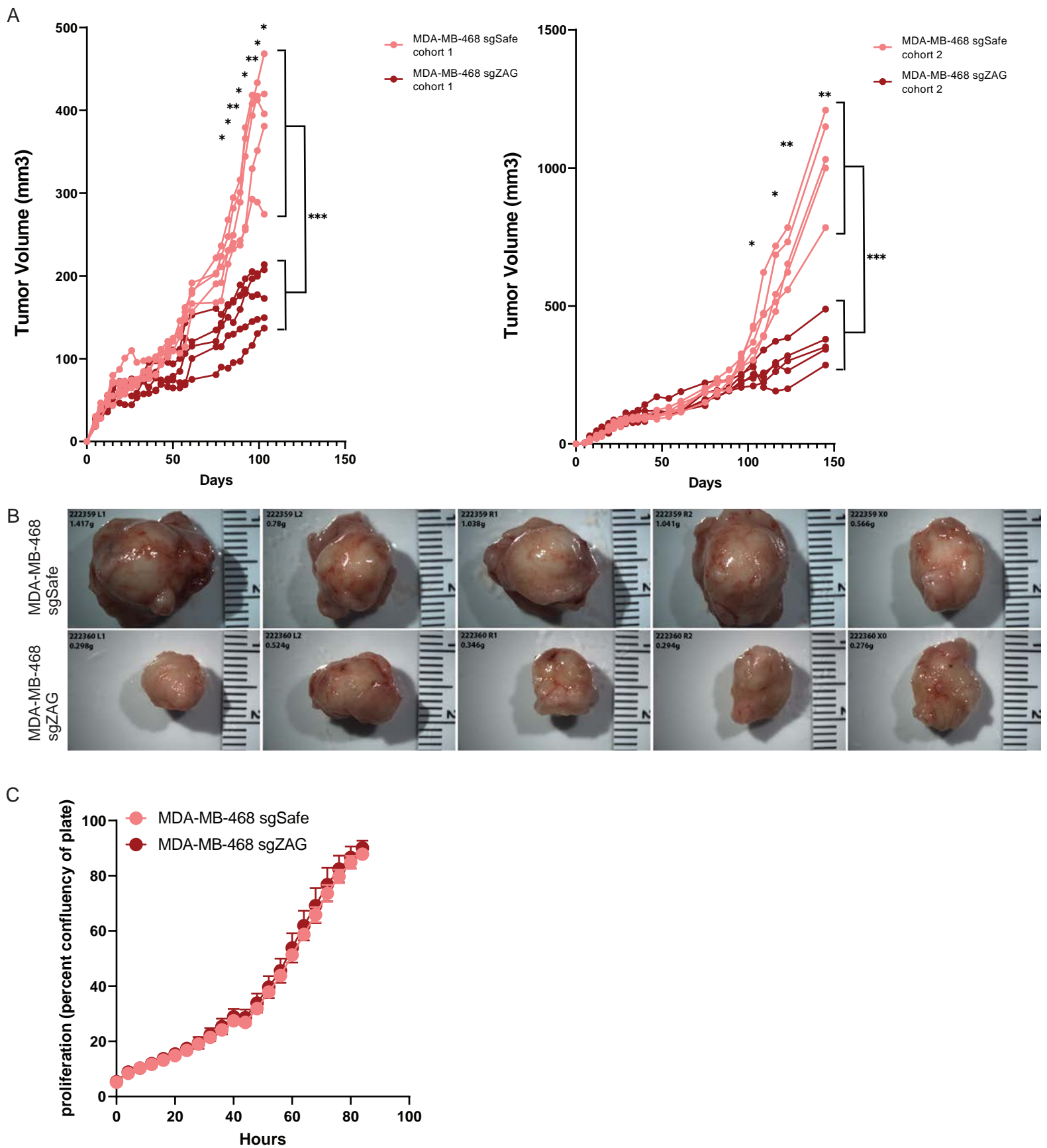
Breast Invasive Carcinoma (TCGA, Nature 2012) data set  
Logrank Test p-value: 0.0126Breast Cancer (METABRIC, Nature 2012 & Nat Commun 2016) data set  
Logrank Test p-value: 0.3007

Figure S3



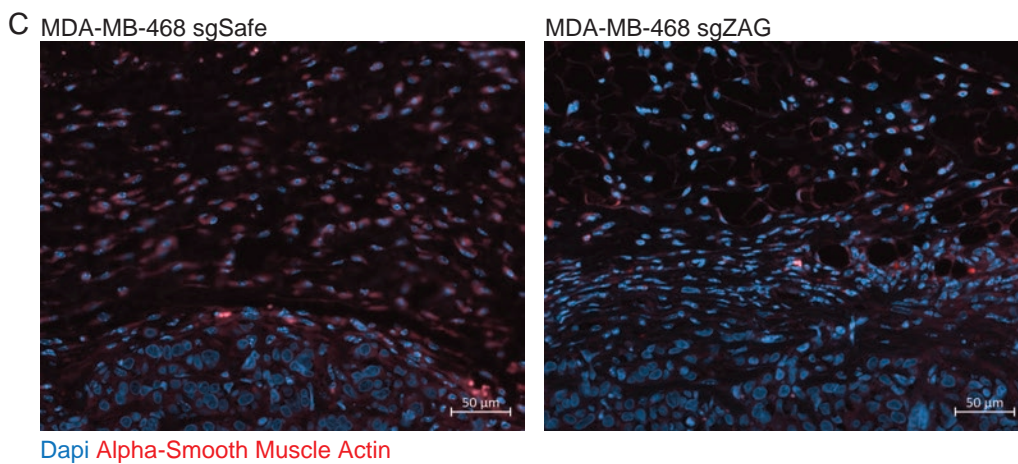
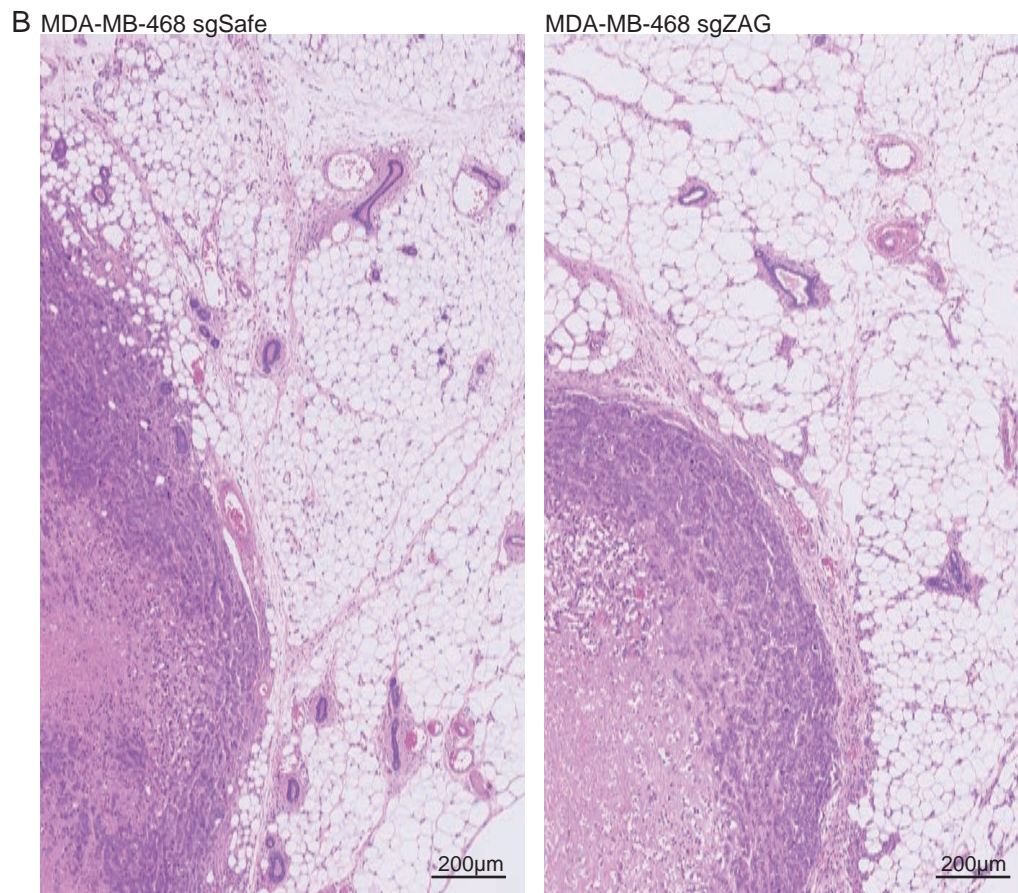
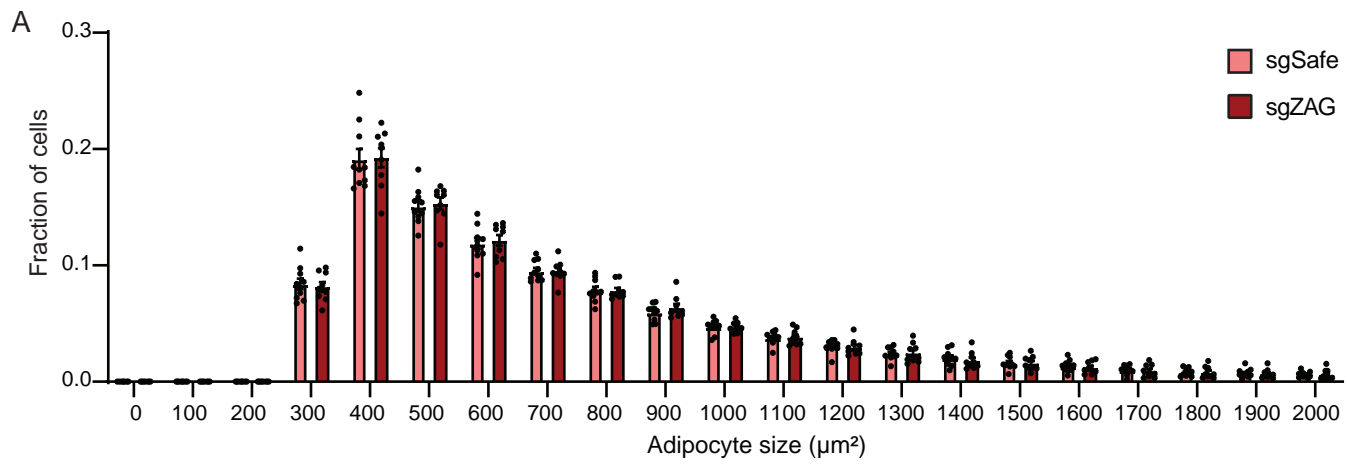


Figure 5