

# **SUPPLEMENTAL MATERIAL**

**Table S1. Reasons for lack of data at 3-months post-LVAD implantation, resulting in exclusion of 3226 individuals from the investigation of right heart failure at 3-months.**

<b>Reason</b>	<b>Number (% of the excluded)</b>
Censoring event prior to 3-month RHF ascertainment window*	
Death	290 (9.0%)
Cardiac transplantation	176 (5.5%)
Device explantation or exchange	152 (4.7%)
Last available follow-up	293 (9.1%)
No follow-up recorded during the 3-month RHF ascertainment window	2315 (71.7%)

\*3-month RHF ascertainment window was from 2.5 to 3.5 months following LVAD implantation.

**Table S2. Baseline characteristics comparing persons with and without data available from the 3-month ascertainment window who were not censored at that time.**

Characteristic (at baseline)	Follow-up at 3 months		SMD*
	Available	Not available	
Number	4850	2315	
Age, y	56.6 (13.1)	56.0 (12.7)	0.049
Female	1002 (20.7%)	496 (21.4%)	0.019
Race			0.079
Asian	72 (1.5%)	50 (2.2%)	
Black	1233 (25.4%)	623 (26.9%)	
Other	255 (5.3%)	126 (5.4%)	
Unknown	162 (3.3%)	58 (2.5%)	
White	3128 (64.5%)	1458 (63.0%)	
Hispanic ethnicity	325 (6.7%)	151 (6.5%)	0.007
Device strategy			0.011
Bridge to candidacy	1199 (24.7%)	572 (24.7%)	
Bridge to transplant	1270 (26.2%)	596 (25.7%)	
Destination	2361 (48.7%)	1137 (49.1%)	
Other	20 (0.4%)	10 (0.4%)	
Intermacs profile			0.048
Critical cardiogenic shock (1)	689 (14.2%)	324 (14.0%)	
Progressive decline (2)	1695 (34.9%)	764 (33.0%)	
Stable, inotrope dependent (3)	1808 (37.3%)	911 (39.4%)	
Resting symptoms or lesser severity (4-7)	658 (13.6%)	316 (13.7%)	
Centrifugal LVAD	1548 (31.9%)	778 (33.6%)	0.036
BMI (kg/m <sup>2</sup> )	28.5 (7.0)	28.51 (7.36)	0.003
Diabetes, "severe" by INTERMACS	211 (4.4%)	96 (4.1%)	0.01
CKD, INTERMACS classification	343 (7.1%)	146 (6.3%)	0.031
Primary cardiac disease etiology			0.059
Idiopathic	1591 (33.1%)	798 (34.7%)	
Infectious cardiomyopathy	141 (2.9%)	70 (3.0%)	
Ischemic cardiomyopathy	2082 (43.3%)	933 (40.6%)	
Other specified cause	903 (18.8%)	459 (20.0%)	
Toxic cardiomyopathy	89 (1.9%)	38 (1.7%)	
LV ejection fraction <20%	3245 (66.9%)	1587 (68.6%)	0.035
Severe RV dysfunction	539 (11.1%)	276 (11.9%)	0.025
Inotrope use	4061 (83.7%)	1937 (83.7%)	0.002
Systolic blood pressure (mmHg)	106.3 (16.0)	106.4 (16.1)	0.007
Diastolic blood pressure (mmHg)	65.9 (11.4)	66.0 (11.2)	0.003
Prior tricuspid valve repair/replacement	29 (0.6%)	15 (0.6%)	0.006
Temporary mechanical circulatory support	1257 (30.0%)	589 (29.5%)	0.011
IABP	852 (17.6%)	382 (16.5%)	0.028
ECMO	111 (2.3%)	63 (2.7%)	0.028

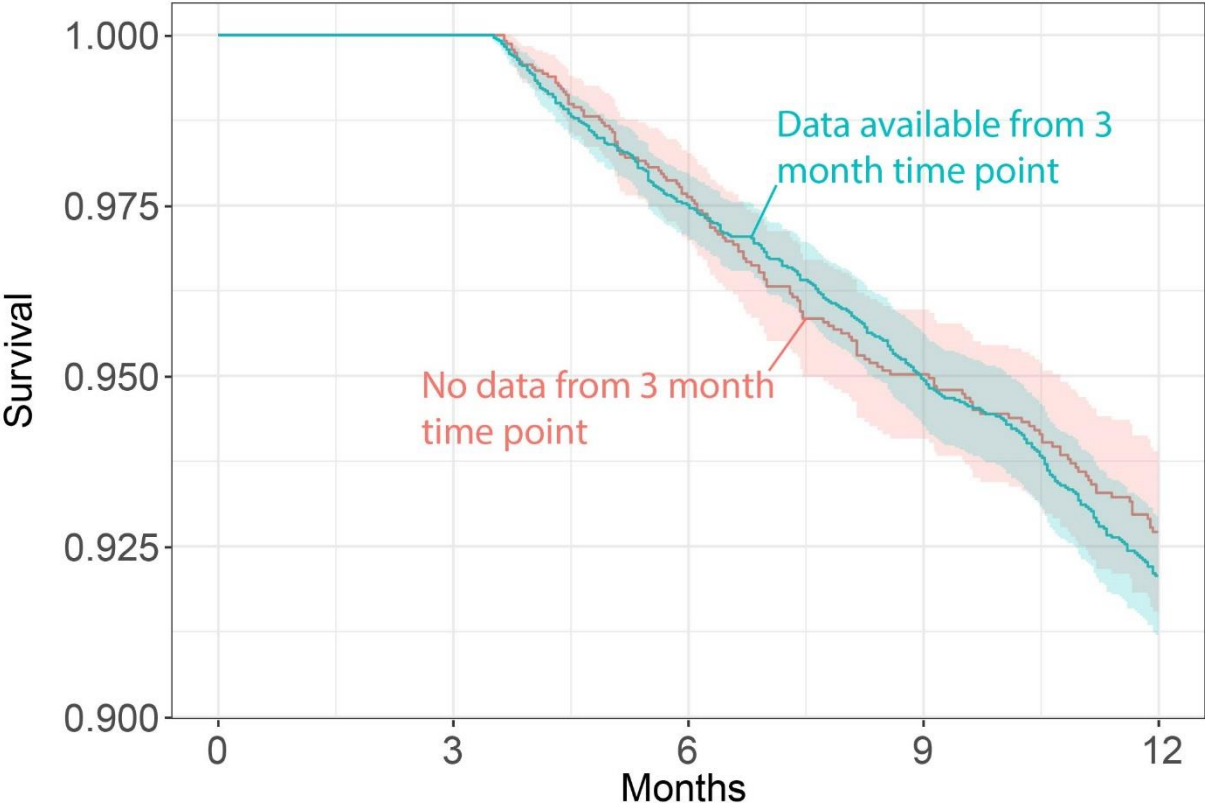
Mechanical Ventilation	214 (4.4%)	117 (5.1%)	0.03
Hemoglobin (g/dl)	11.3 (2.2)	11.3 (2.2)	0.011
WBC ( $10^3/\mu\text{l}$ )	8.5 (3.8)	8.6 (4.2)	0.023
Platelets ( $10^3/\mu\text{l}$ )	200 (79)	200 (81)	0.004
Total bilirubin (mg/dl)	1.3 (1.6)	1.3 (1.4)	0.015
BUN (mg/dl)	28.3 (17.0)	28.1 (16.7)	0.012
Serum creatinine (mg/dl)	1.4 (0.6)	1.4 (0.6)	0.02
eGFR (ml/min/1.73m <sup>2</sup> )	66.7 (25.7)	66.8 (25.2)	0.002
Albumin (g/dl)	3.4 (0.6)	3.5 (0.6)	0.039

Means (standard deviations) are given for continuous variables. Numbers and percentages are given for categorical variables.

SMD, standardized mean difference; CKD, chronic kidney disease; LV, left ventricular; RV, right ventricular; IABP, intraaortic balloon pump; ECMO, extracorporeal membrane oxygenation; WBC, white blood cells; BUN, blood urea nitrogen; eGFR, estimated glomerular filtration rate.

\*Standardized mean difference (SMD) calculations are described in the reference.<sup>29</sup>

**Figure S1. Kaplan Meier estimates and 95% confidence intervals comparing survival among persons with and without data available from the 3-month RHF ascertainment window.**



Note:  $p = 0.2$  by log rank test