

1 **Supplemental Table 1 NRM at 2 years according to the CoBRA score in the training**
 2 **cohort.**

The CoBRA score	Risk group	n	NRM at 2 years (95% CI) (%)
1	Low	15	6.7 (0.4 - 27.0)
2		111	17.3 (10.9 - 25.0)
3		340	13.1 (9.8 - 17.0)
4		516	18.0 (14.8 - 21.5)
5	Intermediate	552	22.3 (18.9 - 25.9)
6		451	29.8 (25.6 - 34.1)
7		319	37.2 (31.9 - 42.6)
8	High	198	42.6 (35.5 - 49.4)
9		111	50.3 (40.5 - 59.3)
10-11		74	56.8 (44.5 - 67.3)

3

4 **Supplemental Table 2 NRM at 2 years according to the CoBRA score in the validation**
5 **cohort.**

The CoBRA score	Risk group	n	NRM at 2 years (95% CI) (%)
1	Low	15	0.0 (0.0 - 0.0)
2		80	6.6 (2.4 - 13.9)
3		211	13.0 (8.5 - 18.6)
4		338	18.4 (14.0 - 23.3)
5	Intermediate	377	18.8 (14.5 - 23.6)
6		318	28.3 (22.6 - 34.3)
7		229	32.0 (25.6 - 38.6)
8	High	96	46.8 (35.3 - 57.4)
9		55	49.2 (34.3 - 62.6)
10-11		31	40.6 (19.4 - 61.0)

6

7 **Supplemental Figure 1 Clinical outcomes according to transplant year.**

8 The cumulative incidence of (A) NRM and (B) Relapse. (C) OS and (D) PFS.

9
10 **Supplemental Figure 2 Flowchart for recipient selection.**

11 AML, acute myeloid leukemia; ALL, acute lymphoblastic leukemia; MDS, myelodysplastic
12 syndrome; MPN, myeloproliferative neoplasms; ATL, adult T-cell leukemia-lymphoma; UCB,
13 umbilical cord blood; GVHD, graft-versus-host disease; CNI, calcineurin inhibitor; MTX,
14 methotrexate; MMF, mycophenolate mofetil; DRI, disease risk index; CR, complete remission;
15 CFU-GM, granulocyte-monocyte colony forming unit; HCT-CI, hematopoietic cell transplant-
16 specific comorbidity index; PS, performance status; HCT, hematopoietic cell transplantation.

17
18 **Supplemental Figure 3 NRM according to recipient/donor sex.**

19 F to F; female donor to female recipient, F to M; female donor to male recipient, M to F; male
20 donor to female recipient, M to M; male donor to male recipient.

21
22 **Supplemental Figure 4 PFS and Relapse.**

23 (A) PFS and (B) the cumulative incidence of relapse in the training cohort and (C) (D) those
24 in the validation cohort.

25
26 **Supplemental Figure 5 NRM and OS in the validation cohort excluding ATL.**

27 (A) The cumulative incidence of NRM and (B) OS in the validation cohort excluding ATL.

28
29 **Supplemental Figure 6 The calibration plot.**

30 The value predicted by the CoBRA score (x-axis) and the observed NRM (y-axis).

31

32 **Supplemental Figure 7 NRM risks based on conditioning regimen.**

33 * The multivariable Cox regression analysis for NRM were used for interaction analysis. We
34 identified significant interaction terms when a P-value of less than 0.05 was obtained.

35

36 **Supplemental Figure 8 Engraftment.**

37 The cumulative incidence of (A) neutrophil and (B) platelet engraftment in the entire cohort.

38

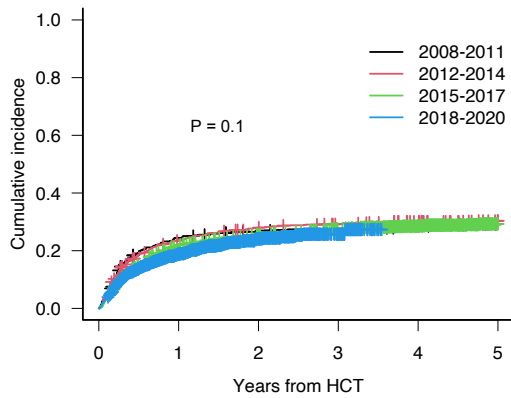
39 **Supplemental Figure 9 GVHD.**

40 The cumulative incidence of (A) grade II to IV, (B) grade III to IV acute GVHD, and (C) chronic
41 and (D) extensive chronic GVHD in the entire cohort.

Supplemental Figure 1

A

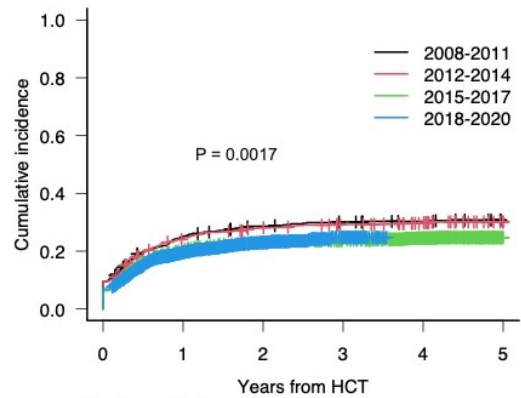
Non-relapse mortality



	Number at risk					
	0	1	2	3	4	5
2008-2011	491	243	209	197	188	173
2012-2014	900	458	383	356	332	304
2015-2017	1296	717	619	553	396	162
2018-2020	1750	762	330	79	0	0

B

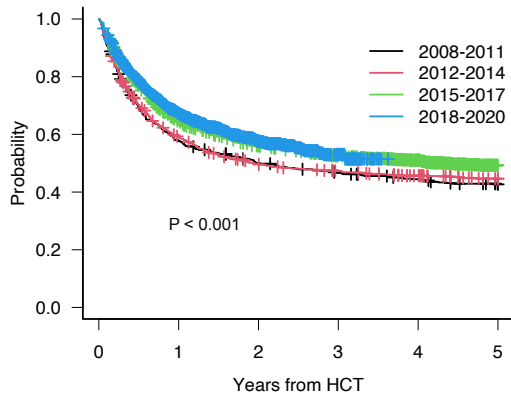
Relapse



	Number at risk					
	0	1	2	3	4	5
2008-2011	491	243	209	197	188	173
2012-2014	900	458	383	356	332	304
2015-2017	1296	717	619	553	396	162
2018-2020	1750	762	330	79	0	0

C

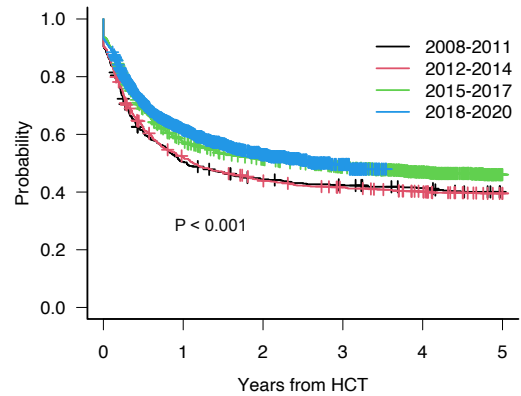
Overall survival



	Number at risk					
	0	1	2	3	4	5
2008-2011	491	278	236	217	202	186
2012-2014	900	517	426	399	370	338
2015-2017	1296	793	663	588	425	167
2018-2020	1750	830	360	85	0	0

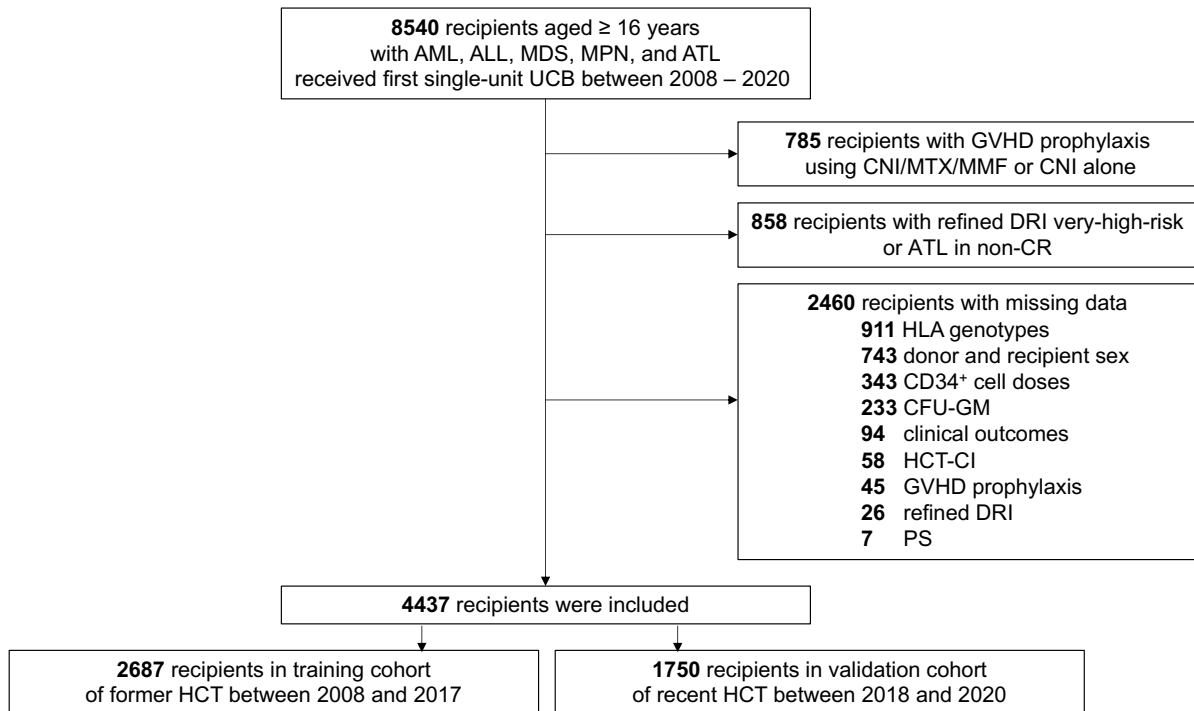
D

Progression-free survival



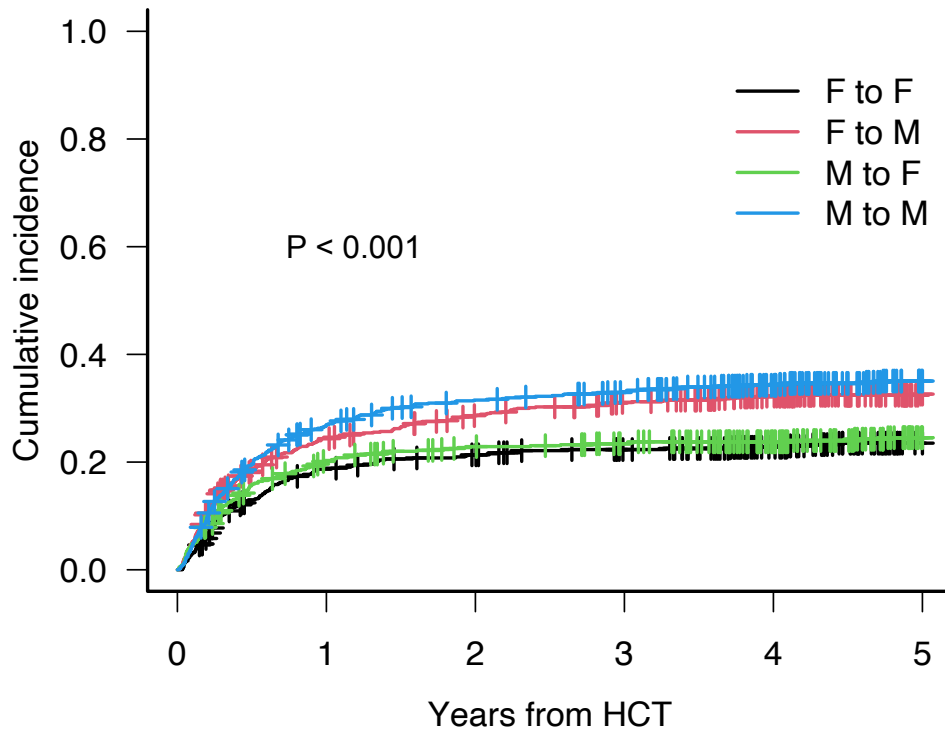
	Number at risk					
	0	1	2	3	4	5
2008-2011	491	243	209	197	188	173
2012-2014	900	458	383	356	332	304
2015-2017	1296	717	619	553	396	162
2018-2020	1750	762	330	79	0	0

Supplemental Figure 2



Supplemental Figure 3

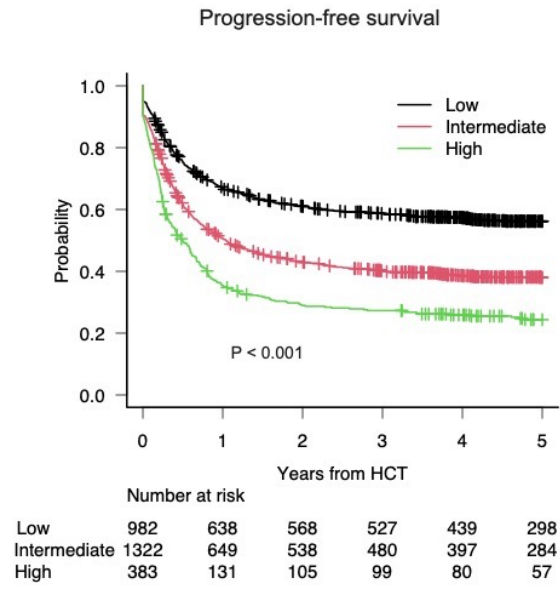
Non-relapse mortality



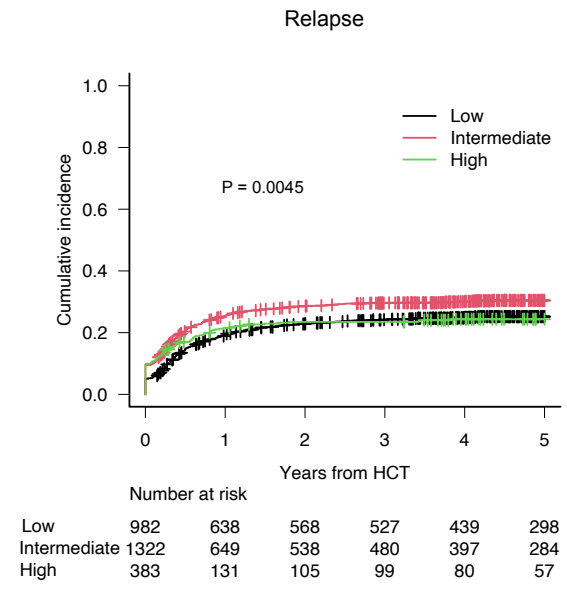
	Number at risk					
F to F	543	311	273	253	206	144
F to M	784	391	325	292	252	181
M to F	606	340	296	271	224	149
M to M	754	376	317	290	234	165

Supplemental Figure 4

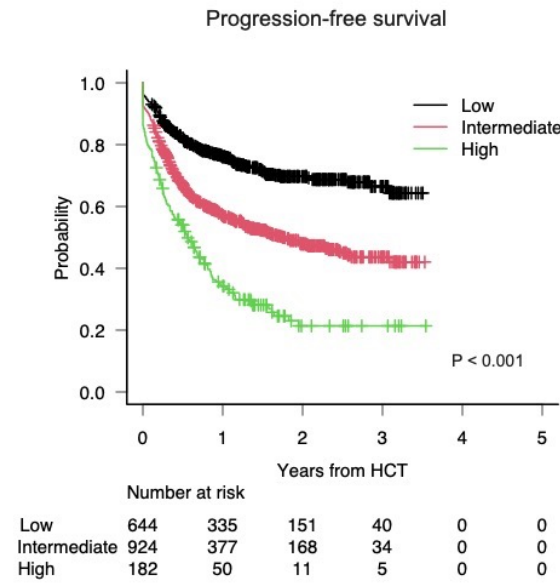
A



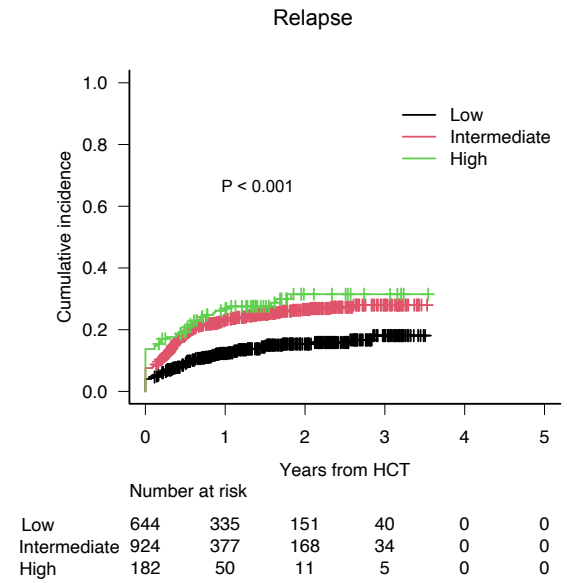
B



C



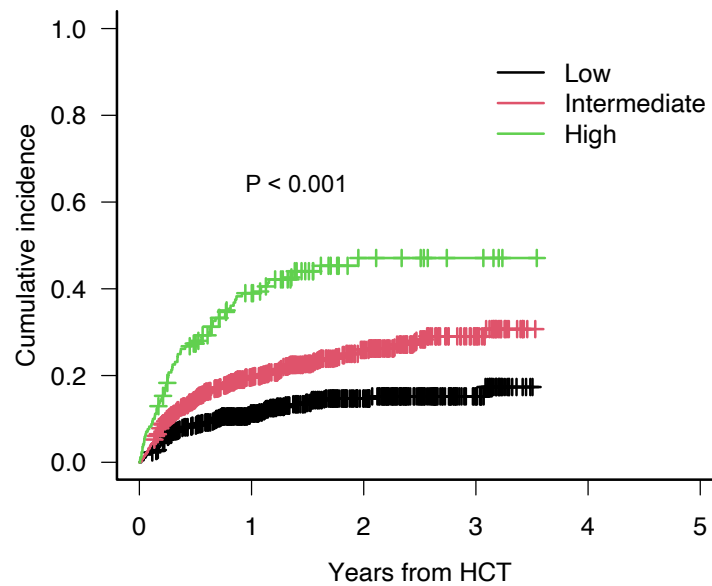
D



Supplemental Figure 5

A

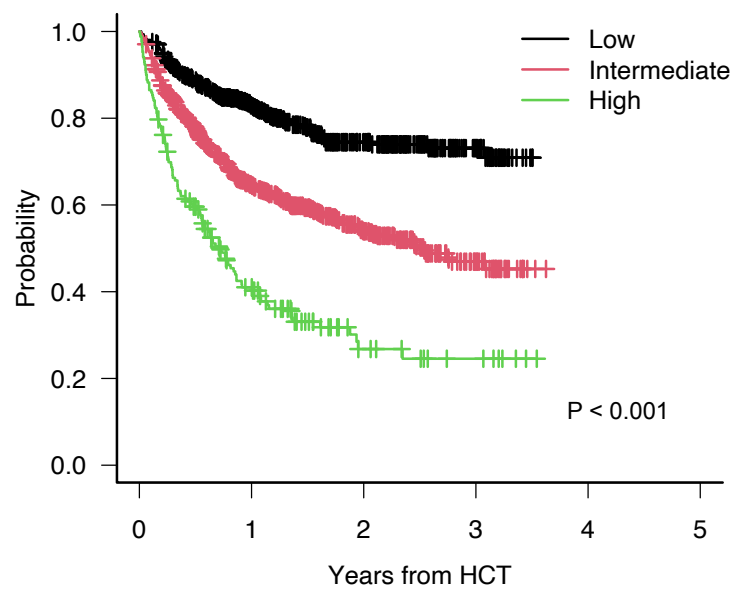
Non-relapse mortality



	Number at risk					
	0	1	2	3	4	5
Low	616	325	148	39	0	0
Intermediate	849	360	157	34	0	0
High	170	47	11	5	0	0

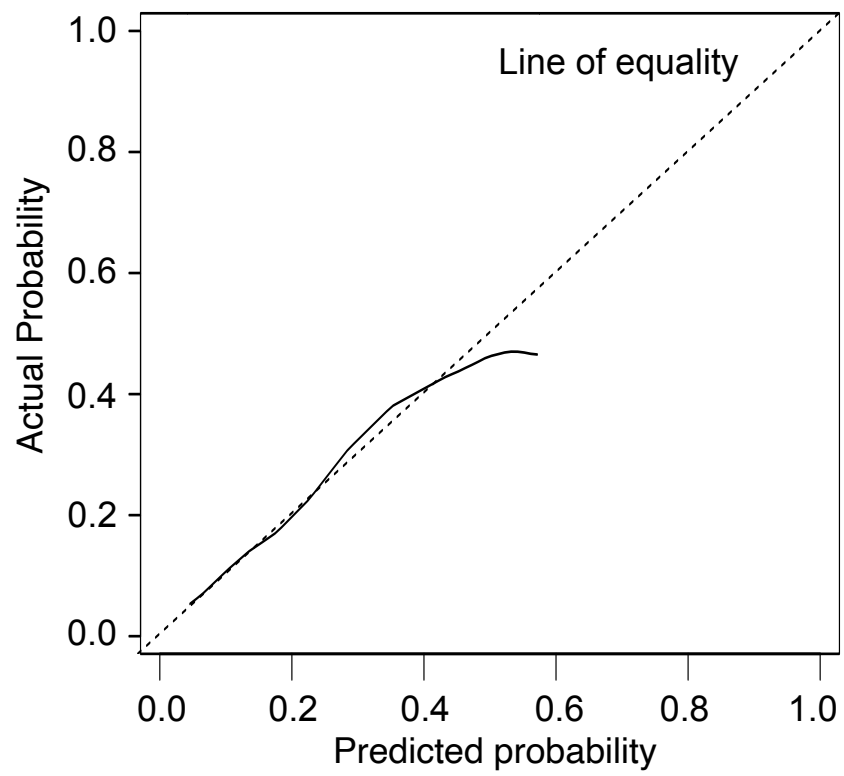
B

Overall survival

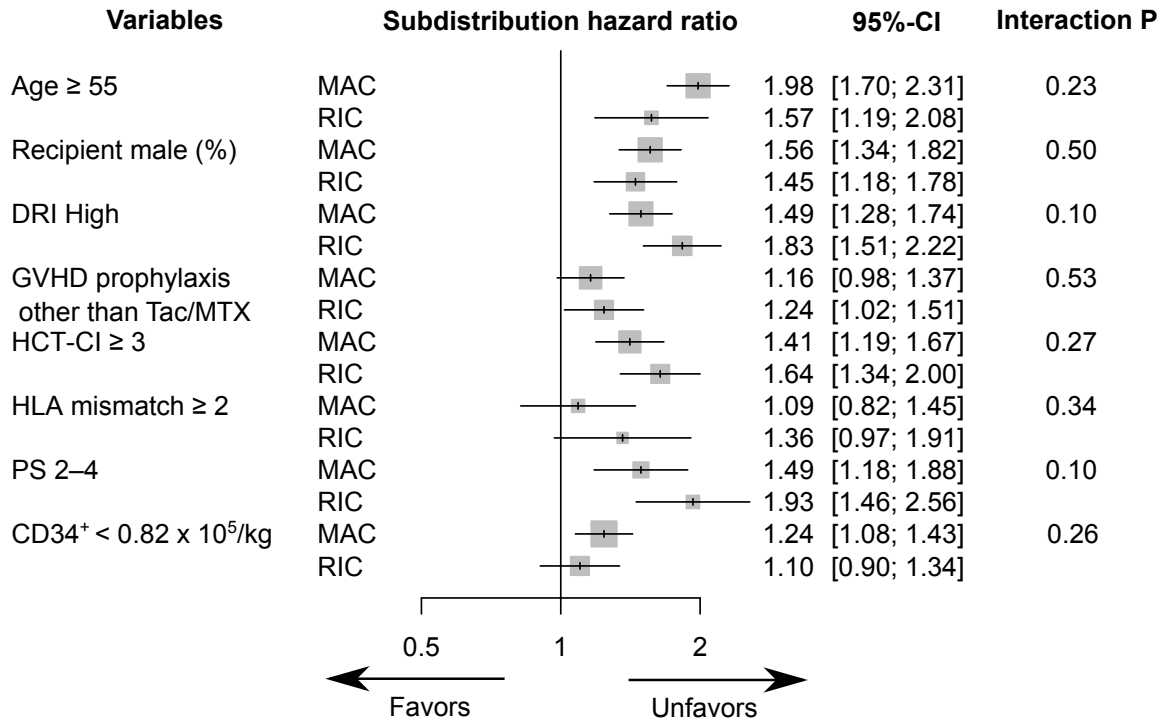


	Number at risk					
	0	1	2	3	4	5
Low	616	350	159	42	0	0
Intermediate	849	389	169	35	0	0
High	170	55	15	7	0	0

Supplemental Figure 6



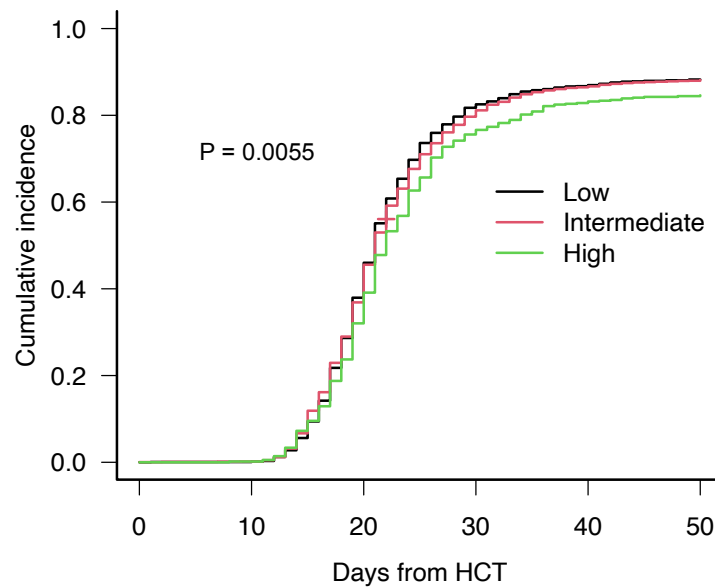
Supplemental Figure 7



Supplemental Figure 8

A

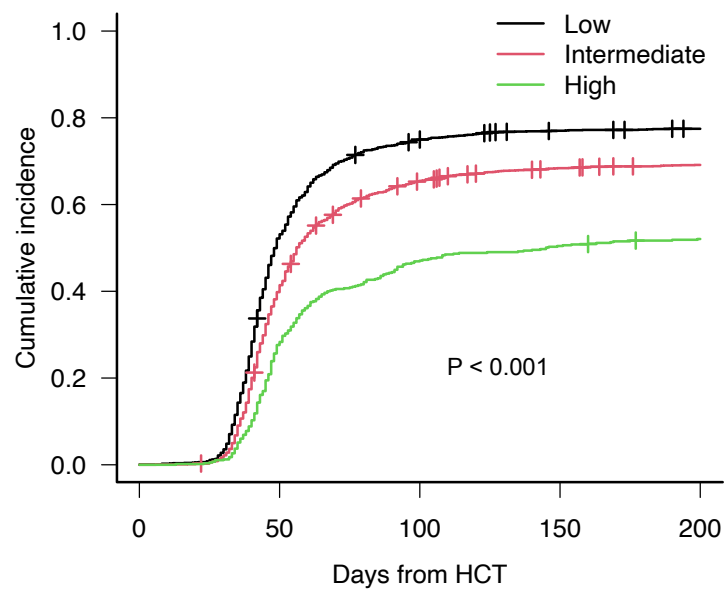
Neutrophil engraftment



	Number at risk					
Low	1626	1616	981	256	169	137
Intermediate	2246	2222	1362	363	190	141
High	565	548	345	80	33	22

B

Platelet engraftment

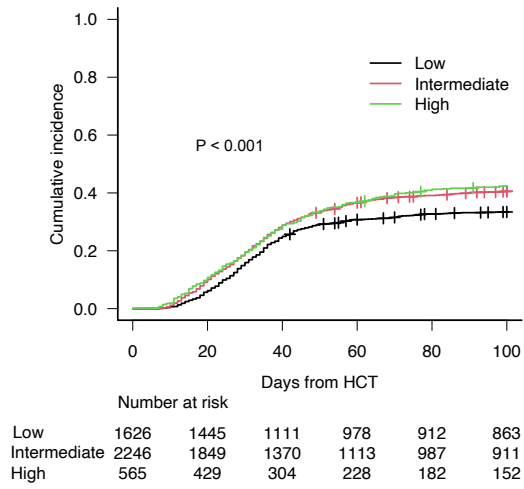


	Number at risk				
Low	1626	705	268	206	169
Intermediate	2245	1153	418	268	199
High	565	323	127	74	43

Supplemental Figure 9

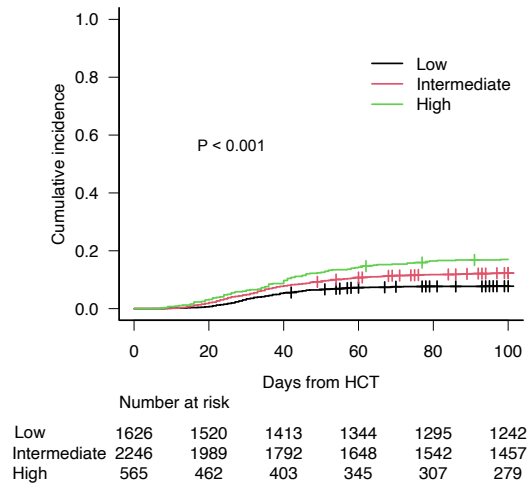
A

Grade II to IV acute GVHD



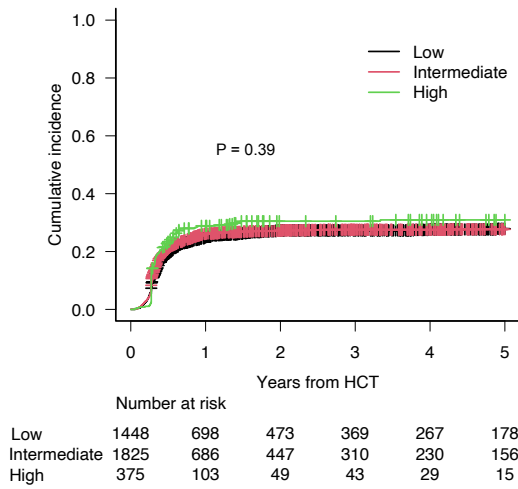
B

Grade III to IV acute GVHD



C

Chronic GVHD



D

Extensive chronic GVHD

