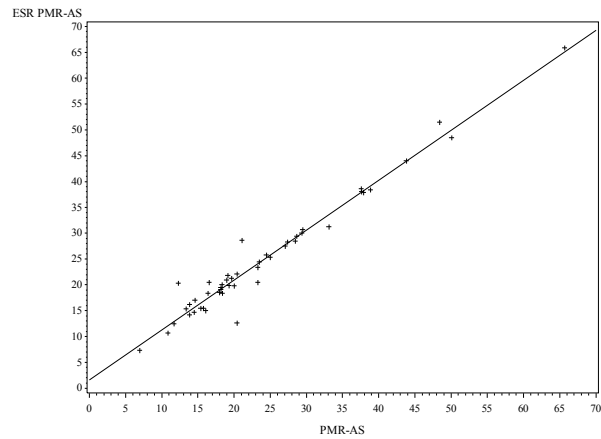


Supplementary

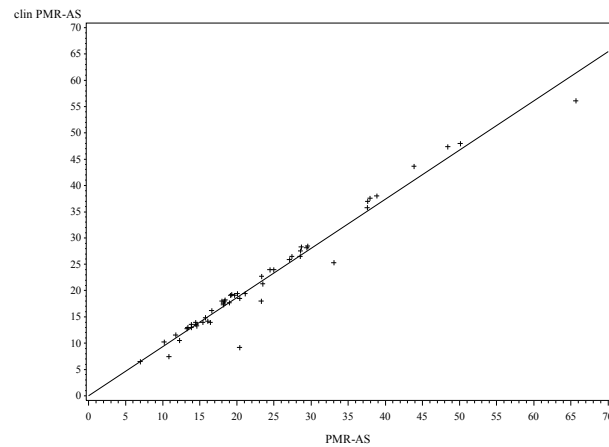
Figure 1: Scatter plots between CRP-PMR-AS and ESR-PMR-AS (A), clin-PMR-AS (B) and imp-CRP PMR-AS (C) at inclusion and between CRP-PMR-AS and ESR-PMR-AS (D), clin-PMR-AS (E) and imp-CRP PMR-AS (F) at week 24 for the placebo group (n=51). Trendlines are represented by a continuous line.

A

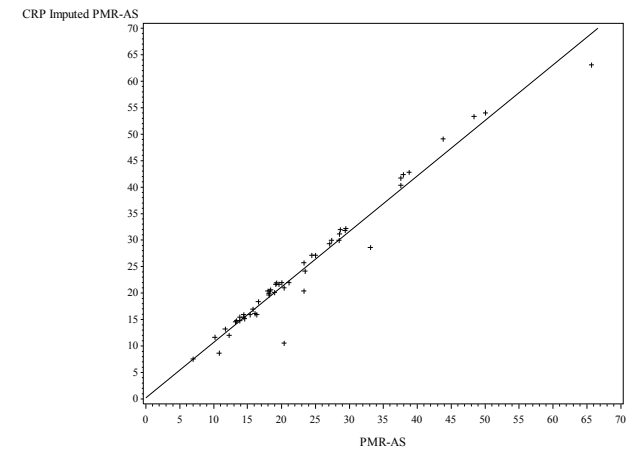
Scatter plot PMR-AS and ESR PMR-AS at Inclusion
ARM=Placebo

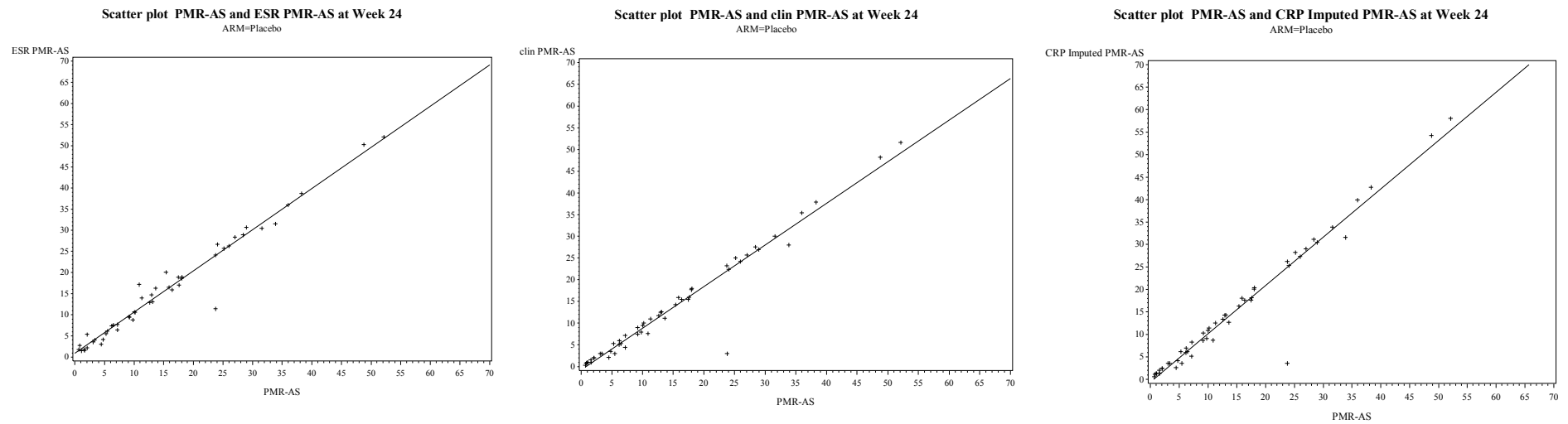
**B**

Scatter plot PMR-AS and clin PMR-AS at Inclusion
ARM=Placebo

**C**

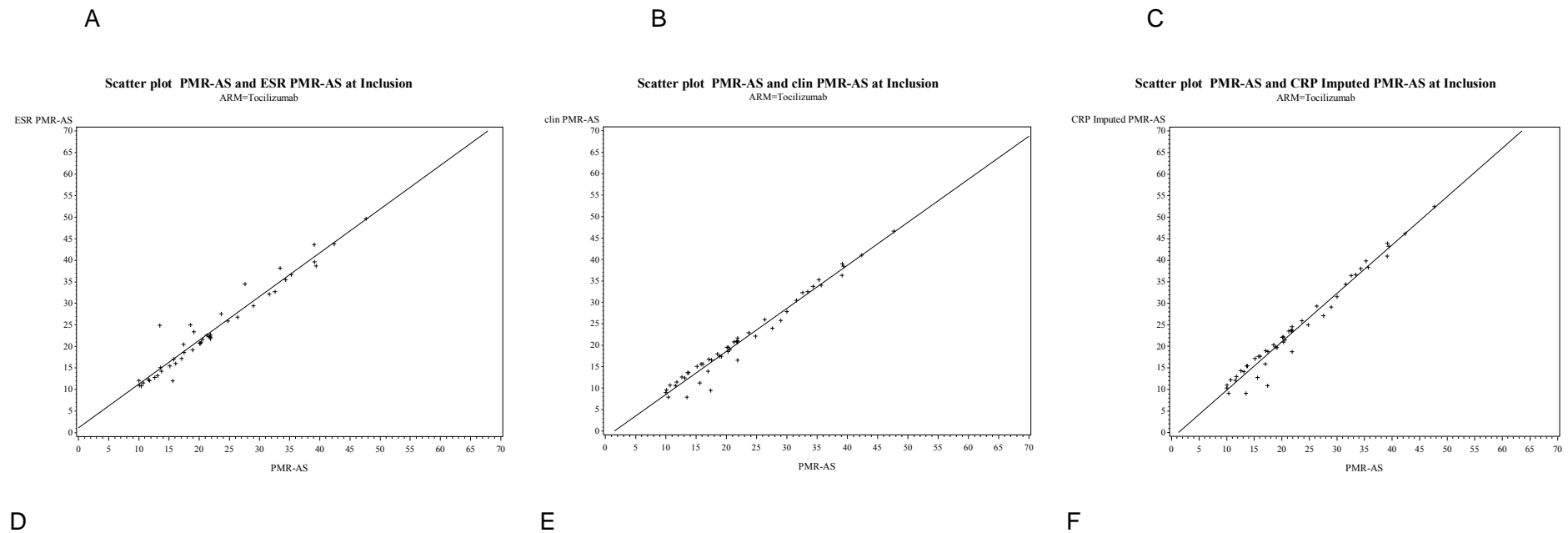
Scatter plot PMR-AS and CRP Imputed PMR-AS at Inclusion
ARM=Placebo

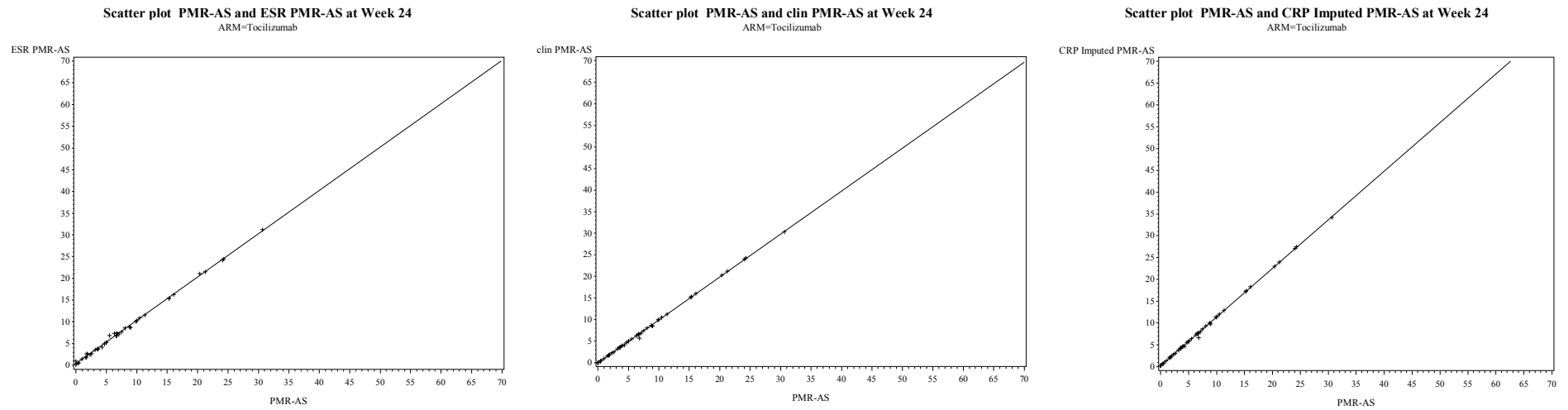
**D****E****F**



PMR: polymyalgia rheumatica; AS: activity score; ESR: erythrocyte sedimentation rate; CRP: C reactive protein; clin: clinical; imp-
CRP: imputed CRP

Figure 2: Scatter plots between CRP-PMR-AS and ESR-PMR-AS (A), clin-PMR-AS (B) and imp-CRP PMR-AS (C) at inclusion and between CRP-PMR-AS and ESR-PMR-AS (D), clin-PMR-AS (E) and imp-CRP PMR-AS (F) at week 24 for the tocilizumab group (n= 49). Trendlines are represented by a continuous line.



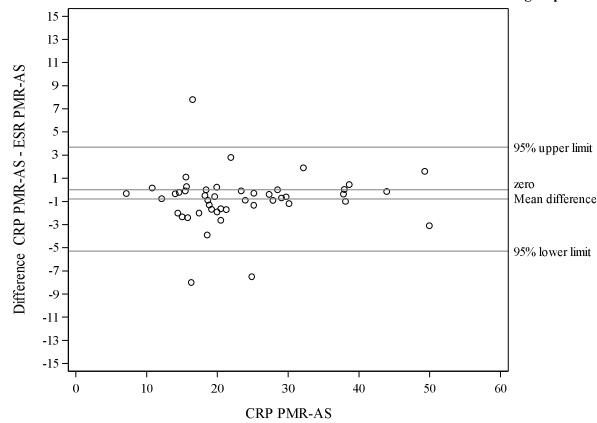


PMR: polymyalgia rheumatica; AS: activity score; ESR: erythrocyte sedimentation rate; CRP: C reactive protein; clin: clinical; imp-
CRP: imputed CRP

Figure 3: Bland–Altman plots using CRP-PMR-AS as the gold standard at inclusion in the placebo group (n=51). The y-axis represents the difference between CRP-PMR-AS and ESR-PMR-AS (A), difference between CRP-PMR-AS and clin-PMR-AS (B) and difference between CRP-PMR-AS and imp-CRP PMR-AS (C), and at week 24, in the placebo group, the y-axis shows the difference between CRP-PMR-AS and ESR-PMR-AS (D), difference between CRP-PMR-AS and clin-PMR-AS (E) and difference between CRP-PMR-AS and imp-CRP PMR-AS (F).

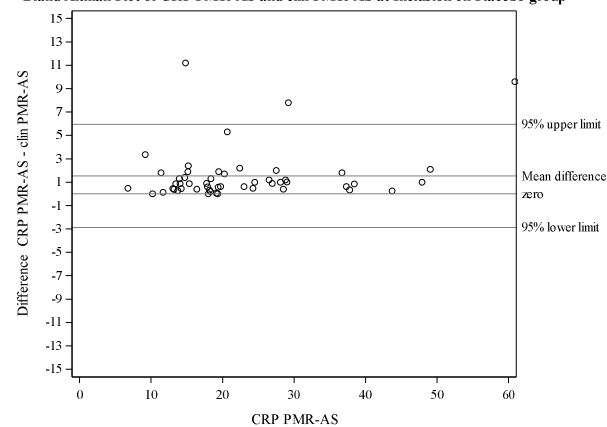
A

Bland Altman Plot of CRP PMR-AS and ESR PMR-AS at Inclusion on Placebo group



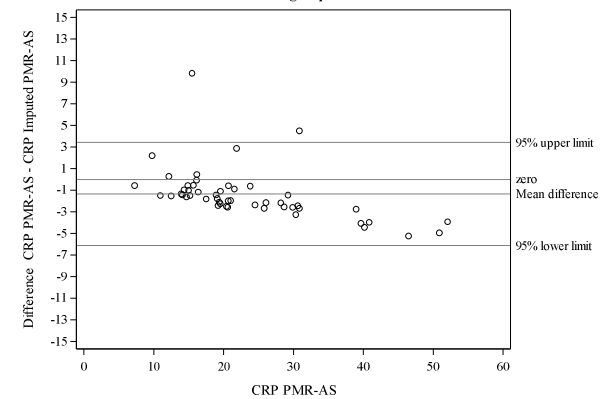
B

Bland Altman Plot of CRP PMR-AS and clin PMR-AS at Inclusion on Placebo group



C

Bland Altman Plot of CRP PMR-AS and CRP Imputed PMR-AS at Inclusion on Placebo group

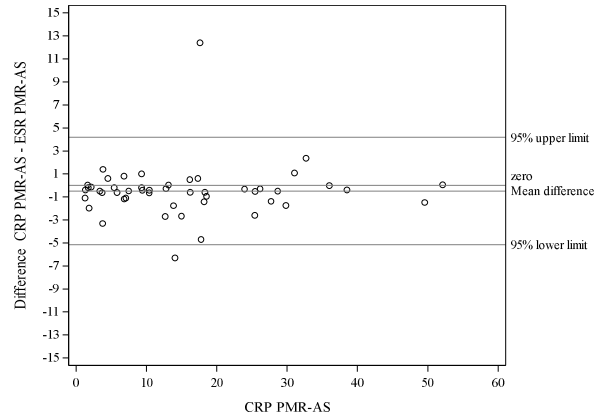


D

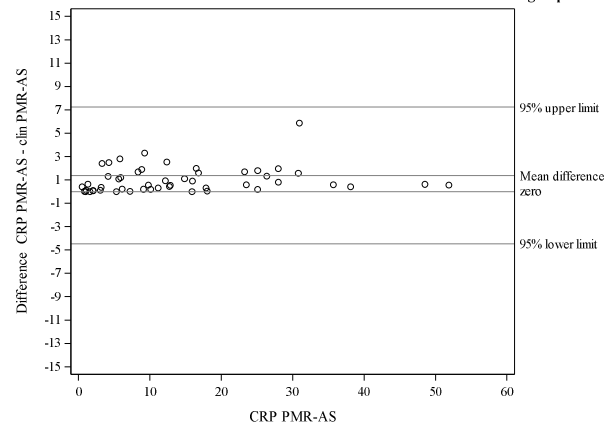
E

F

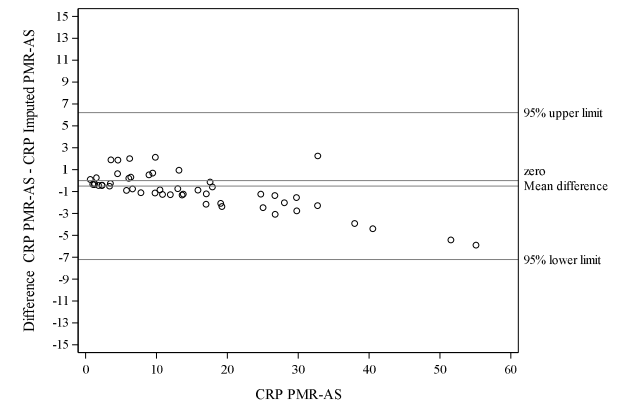
Bland Altman Plot of CRP PMR-AS and ESR PMR-AS at Week 24 on Placebo group



Bland Altman Plot of CRP PMR-AS and clin PMR-AS at Week 24 on Placebo group



Bland Altman Plot of CRP PMR-AS and CRP Imputed PMR-AS at Week 24 on Placebo group

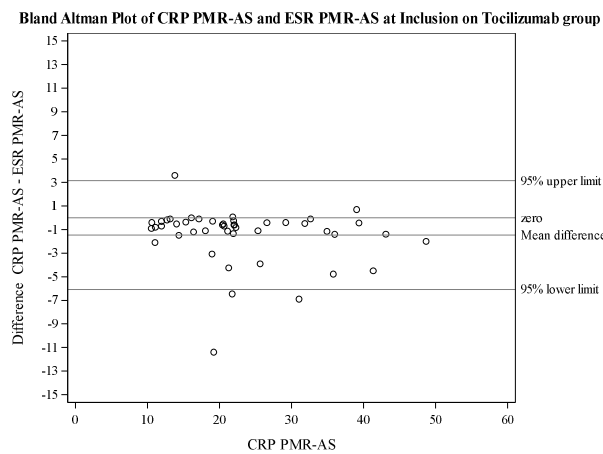


The 95% upper and lower limits are represented, and the mean differences and zero line are represented. One patient could not be represented in graph C with a difference of 20.18 and E with a difference of 20.8.

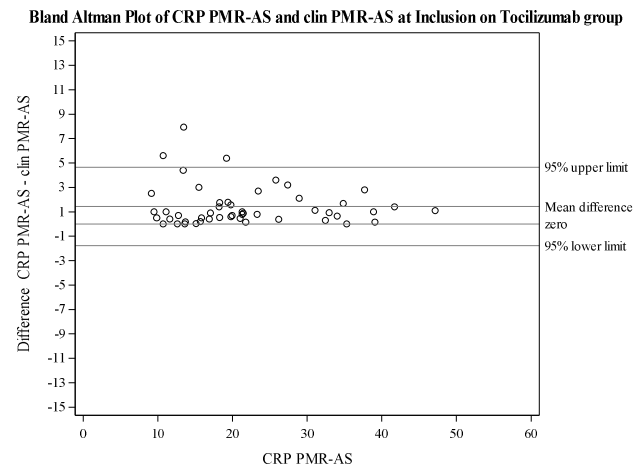
PMR: polymyalgia rheumatica; AS: activity score; ESR: erythrocyte sedimentation rate; CRP: C reactive protein; clin: clinical; imp-
CRP: imputed CRP

Figure 4: Bland–Altman plots using CRP-PMR-AS as the gold standard at inclusion in the tocilizumab group (n=49). The y-axis represents the difference between CRP-PMR-AS and ESR-PMR-AS (A), difference between CRP-PMR-AS and clin-PMR-AS (B) and difference between CRP-PMR-AS and imp-CRP PMR-AS (C), and at week 24, in the placebo group, the y-axis shows the difference between CRP-PMR-AS and ESR-PMR-AS (D), difference between CRP-PMR-AS and clin-PMR-AS (E) and difference between CRP-PMR-AS and imp-CRP PMR-AS (F).

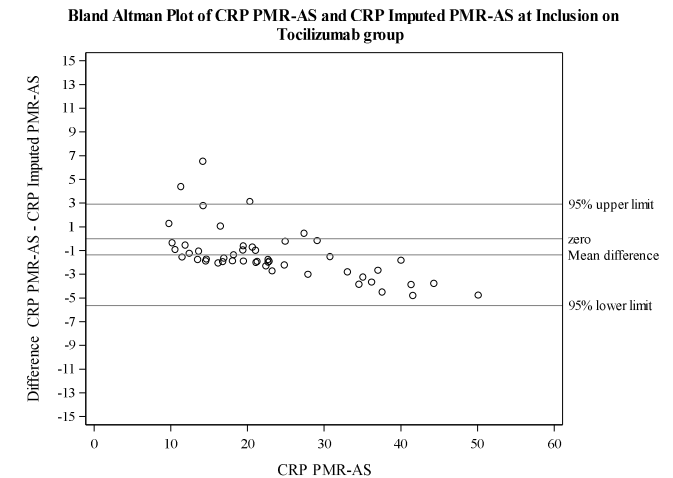
A



B



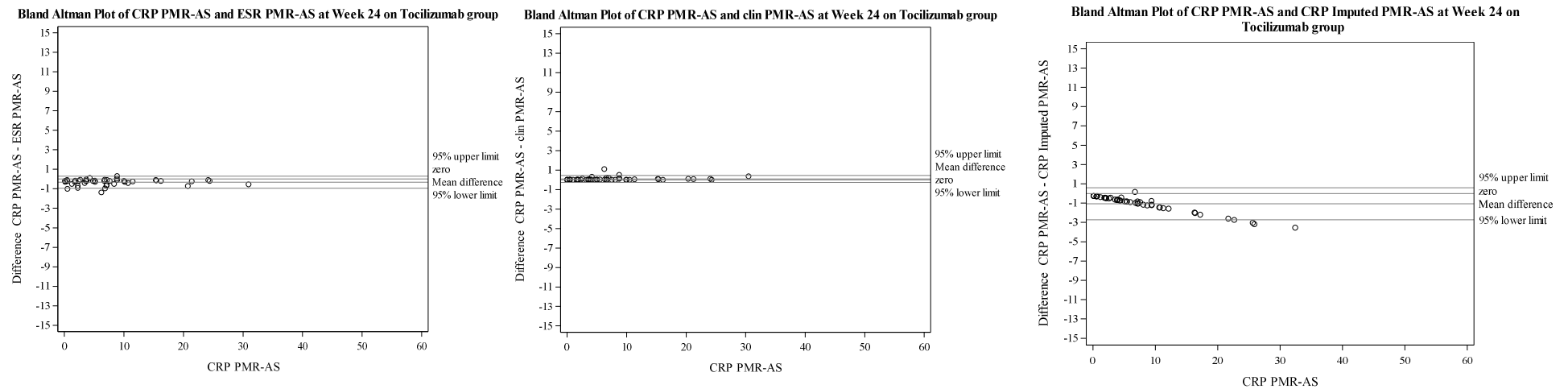
C



D

e

F



The 95% upper and lower limits are presented, and the mean differences and zero line are presented.

PMR: polymyalgia rheumatica; AS: activity score; ESR: erythrocyte sedimentation rate; CRP: C reactive protein; clin: clinical; imp-

CRP: imputed CRP

Table 1: Intraclass correlation coefficient (ICC) between different PMR-AS at inclusion and week 24, n=100 patients

Scores	time	ICC	95% CI lower limit	95% CI upper limit
CRP-PMR-AS vs. ESR PMR-AS	Inclusion	0,98	0,97	0,98
CRP-PMR-AS vs. Clin PMR-AS		0,98	0,98	0,99
CRP-PMR-AS vs. Imp-CRP PMR-AS		0,98	0,97	0,99
CRP-PMR-AS vs. ESR PMR-AS	Week 24	0,99	0,98	0,99
CRP-PMR-AS vs. Clin PMR-AS		0,98	0,97	0,98
CRP-PMR-AS vs. Imp-CRP PMR-AS		0,98	0,97	0,98

Table 2: Intraclass correlation coefficient (ICC) between different PMR in the placebo group (n=51) at inclusion and at week 24

Scores	time	ICC	95% CI lower limit	95% CI upper limit
CRP-PMR-AS vs. ESR PMR-AS	Inclusion – Placebo group	0,98	0,97	0,99
CRP-PMR-AS vs. Clin PMR-AS		0,98	0,97	0,99
CRP-PMR-AS vs. Imp-CRP PMR-AS		0,98	0,97	0,99
CRP-PMR-AS vs. ESR PMR-AS	Week 24– Placebo group	0,98	0,97	0,99
CRP-PMR-AS vs. Clin PMR-AS		0,97	0,95	0,98
CRP-PMR-AS vs. Imp-CRP PMR-AS		0,97	0,95	0,98

Table 3: Intraclass correlation coefficient (ICC) between different PMR in the tocilizumab group (n=49) at inclusion and at week 24

Scores	time	ICC	95% CI lower	95% CI upper
			limit	limit
CRP-PMR-AS vs. ESR PMR-AS	Inclusion – tocilizumab group	0,97	0,96	0,98
CRP-PMR-AS vs. Clin PMR-AS		0,99	0,98	0,99
CRP-PMR-AS vs. Imp-CRP PMR-AS		0,98	0,97	0,99
CRP-PMR-AS vs. ESR PMR-AS	Week 24– tocilizumab group	1.00	1.00	1.00
CRP-PMR-AS vs. Clin PMR-AS		1,0	1.00	1,00
CRP-PMR-AS vs. Imp-CRP PMR-AS		0,99	0,99	1.00

Table 4: Kappa coefficient between the different PMR-AS for the whole population (n=100), calculated at week 12 and week 24, using 10 as the cutoff of CRP-PMR-AS. The results are presented as kappa with 95% confidence intervals.

	Cut off 0 to 10 vs. >10 at week 12	Cut off 0 to 10 vs. >10 at week 24
	Kappa (CI 95%)	Kappa (CI 95%)
CRP-PMR-AS vs. ESR-PMR AS	0.92 (0.84-1)	0.96 (0.90-1)
CRP-PMR AS vs. clinical PMR AS	0.89 (0.79-1)	0.91 (0.83-1)
CRP-PMR-AS vs. imp-CRP PMR-AS	0.90 (0.80-1)	0.82 (0.75-0.96)

Table 5: Contingency tables, number of patients at inclusion in the placebo group and tocilizumab group according to the CRP-PMR-AS in the columns and clin-PMR-AS in the lines, using CRP-PMR-AS cutoffs.

clinical PMR-AS in tocilizumab group	CRP-PMR-AS In tocilizumab group			Total
	>7 _ <= 10	>10 _ <= 17	> 17	
>7 _ <= 10	1	3	1	5
>10 _ <= 17	0	12	3	15
> 17	0	0	29	29
Total	1	15	33	49

clinical PMR-AS in placebo group	CRP-PMR-AS In placebo group			Total
	>1.5 _ <= 7	>10 _ <= 17	> 17	
>1.5 _ <= 7	1	0	0	1
>7 _ <= 10	0	1	1	2
>10 _ <= 17	0	15	0	15
> 17	0	0	33	33
Total	1	16	34	51