

Gene constellations percentage differences between three-year time periods 2016–2018 and 2019–2021

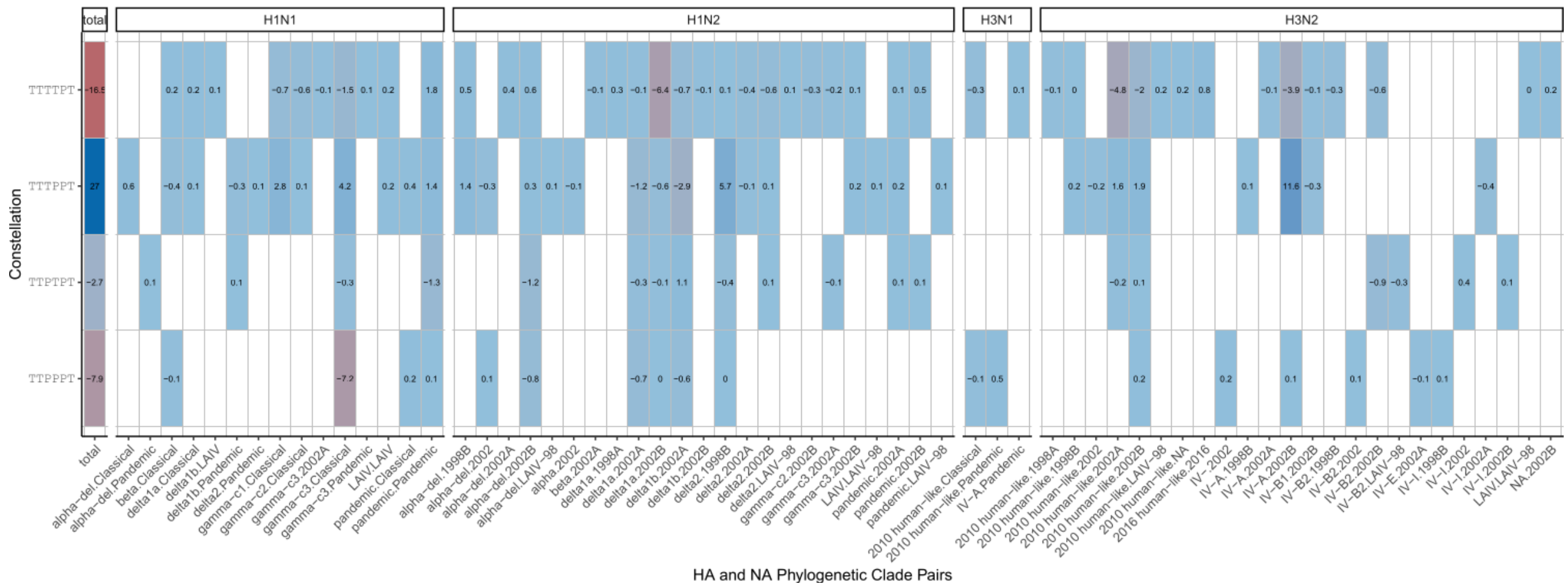


Figure S1. Major gene constellations and hemagglutinin and neuraminidase genetic clade pairings detected in the national USDA influenza A virus in swine surveillance system. The data are presented as the difference in detection frequency between the time periods 2016-2018 and 2019-2021. A blue-to-red color gradient is used to visualize increase or decrease in detection between the two time periods. The data used in this analysis is available within the interactive USDA influenza A virus in swine surveillance interface, octoFLUshow, hosted at <https://flu-crew.org/octoflushow/>.