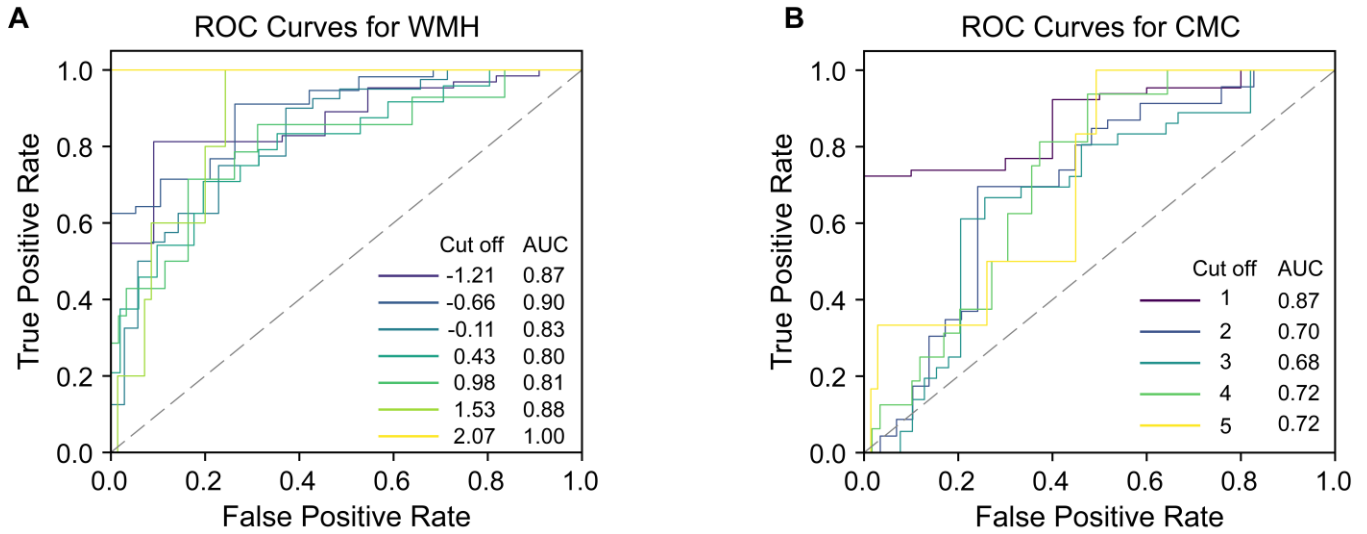


Supplementary Figure 1: Pearson correlations between the continuous variables. (A), (B) WMH versus age and CMC. **(C), (D), (E)** and **(F)** stiffness versus age, WMH, CMC and PiB. **(G), (H)** PiB versus age and WMH respectively. 'r' represents the Pearson correlation coefficient.



Supplementary Figure 2: Diagnostic accuracy of MRE stiffness for WMH and CMC. (A) Receiver Operator Characteristics for WMH illustrating the true positive rate (sensitivity) against the false positive rate (1-specificity) as the classification threshold for WMH varies. The diagonal line represents a random guess model, while our logistic regression model with age, sex, stiffness, CMC, and amyloid load as predictors lies above this line, indicating a better than random guessing performance. The Area Under Curve (AUC) of >80 suggests a good ability of the model to discriminate between the high and low WMH score groups. **(B)** Receiver Operator Characteristics for CMC at various thresholds. AUC >70 suggests an acceptable ability of the model to discriminate between low and high CMC using age, sex, brain stiffness, WMH and amyloid load as predictors.