

Supplementary Material

Diagnosis, treatment and survival from Bladder, Upper Urinary Tract and Urethral Cancers: Real world findings from NHS England between 2013 and 2019

SUPPLEMENTARY CONTENT

1. Appendix 1. Dictionary of Source data used in this report
2. Supplementary figures 1 to 10
3. Supplementary tables 1 to 2.

Appendix 1. Data sources used in this report

GDO UCC data (2013-19)

<https://www.cancerdata.nhs.uk/getdataout/bladder>

- Bladder, UTUC and Urethral cancer: Case numbers and incidence rates 2013-2019
- Split into Malignant and in situ vs. uncertain
- Stage: NMI, MIBC, unknown, all stages. NMI split into Ta, Tis, Ta/Tis, T1 and NOS
- Grade: all, grade 1, grade 2, grade 3, unknown
- Route of diagnosis (2013-18)
- Survival: Net and Kaplan-Meier survival up to 84 months

GDO All 15 cancers data

<https://www.cancerdata.nhs.uk/getdataout/data>

Prevalence

<https://www.cancerdata.nhs.uk/prevalence>

- Prevalence in 2019 for BC only
- vs. age, ethnicity, sex, stage (invasive vs/ invasive/non-invasive), CCG/Cancer Alliance, IMD, Years since diagnosis

Routes to diagnosis details (2006-16)

<https://www.cancerdata.nhs.uk/routestodiagnosis>

- vs. Age, IMD, Alliance, Stage (all vs. in situ BC)

Survival

<https://www.cancerdata.nhs.uk/survival/indexofcancersurvival>

- Survival by CCG
- Trends in survival

<https://digital.nhs.uk/data-and-information/publications/statistical/cancer-survival-in-england/cancers-diagnosed-2015-to-2019-followed-up-to-2020>

- Survival by sex, stage, age
- Survival for other cancers

Treatment (2013-19)

<https://www.cancerdata.nhs.uk/treatments>

- Treatments as individual options
- Treatment combinations
- Vs. Age, Ethnicity, CCI, IMD, Gender, Stage and Year of diagnosis

Radiotherapy used

<https://www.cancerdata.nhs.uk/radiotherapy/dashboard>

- Vs. Cancer alliance, disease group. Age group, intent, year, sex

Emergency presentation

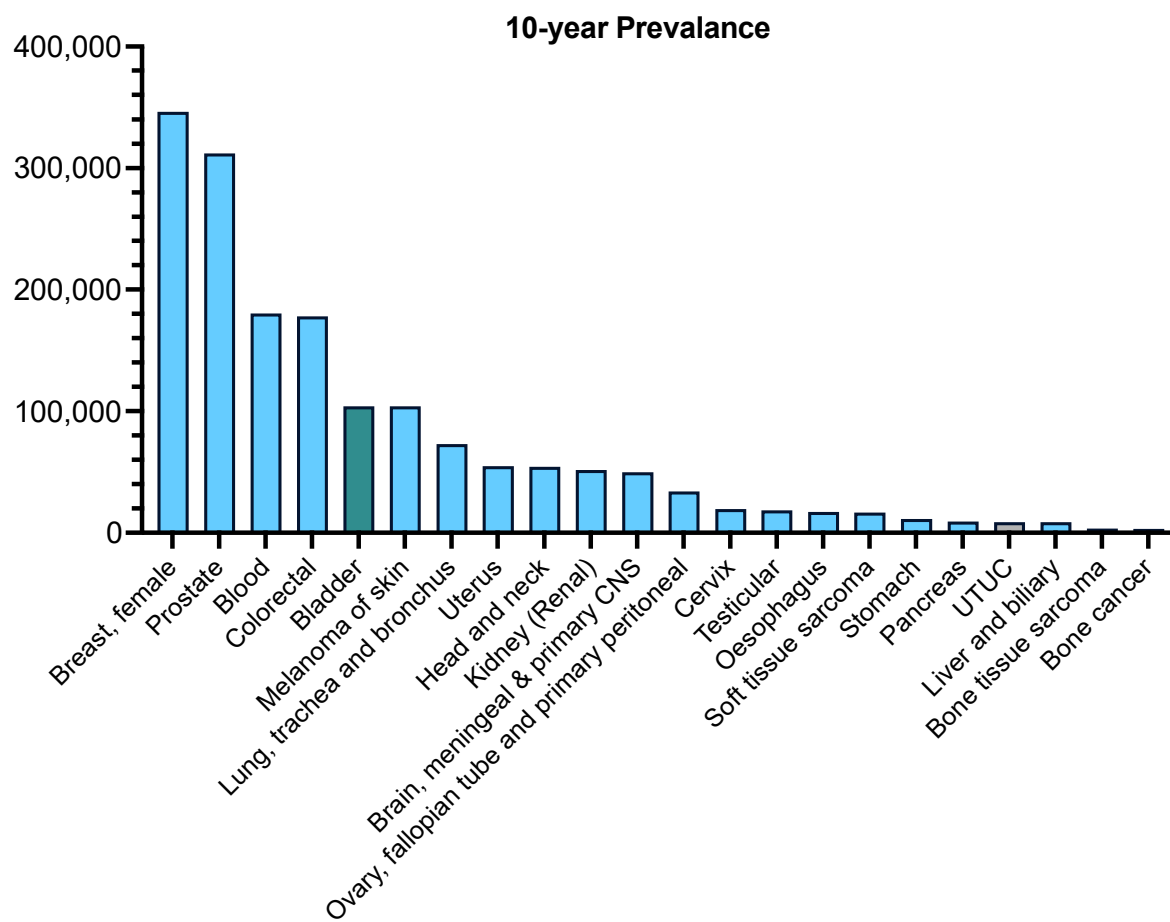
<https://www.cancerdata.nhs.uk/emergencypresentations>

Staging data

https://www.cancerdata.nhs.uk/stage_at_diagnosis

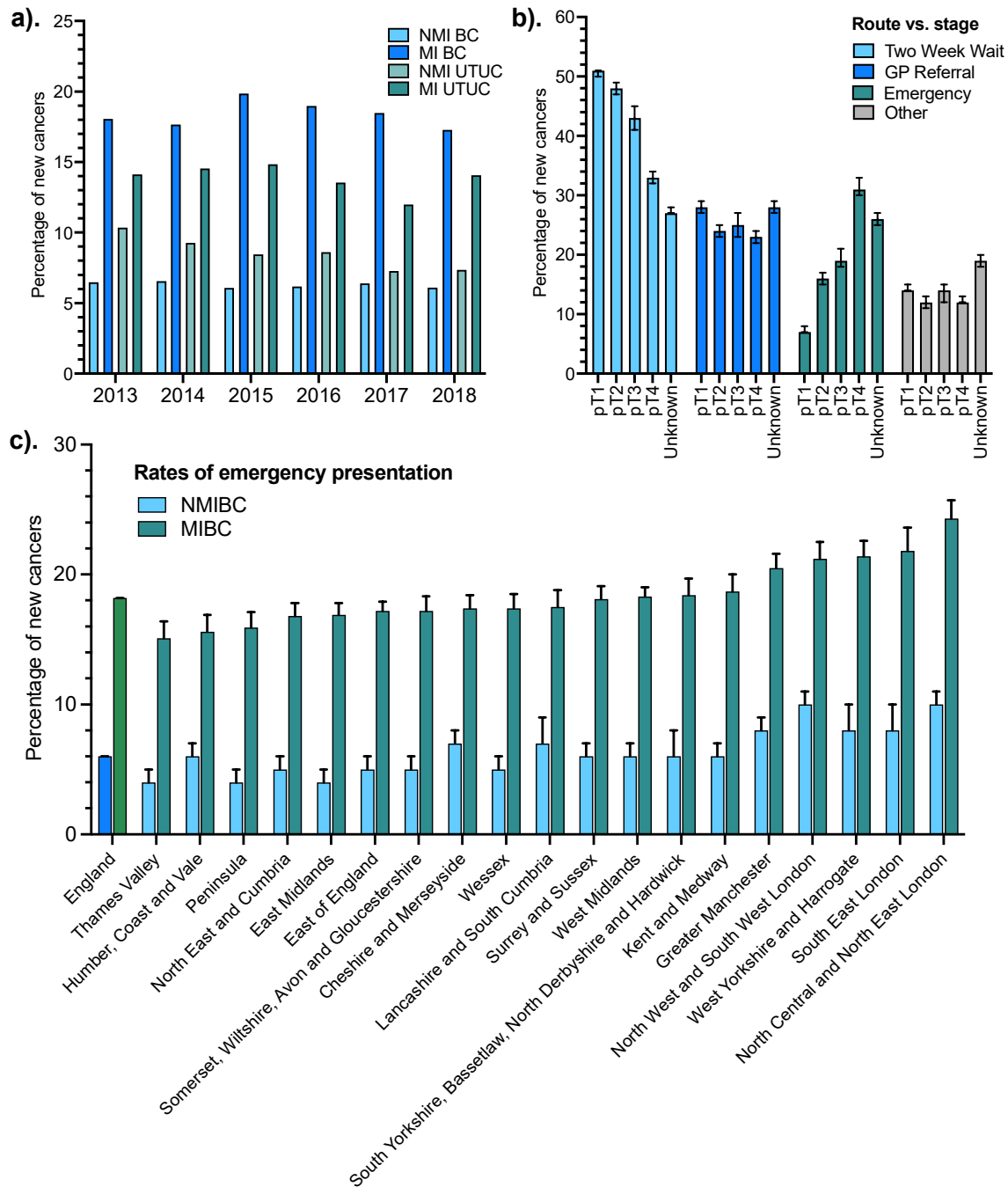
- Geography (alliance, CCG etc.)
- Trends (%) per year
- Trends by site

Supplementary figures

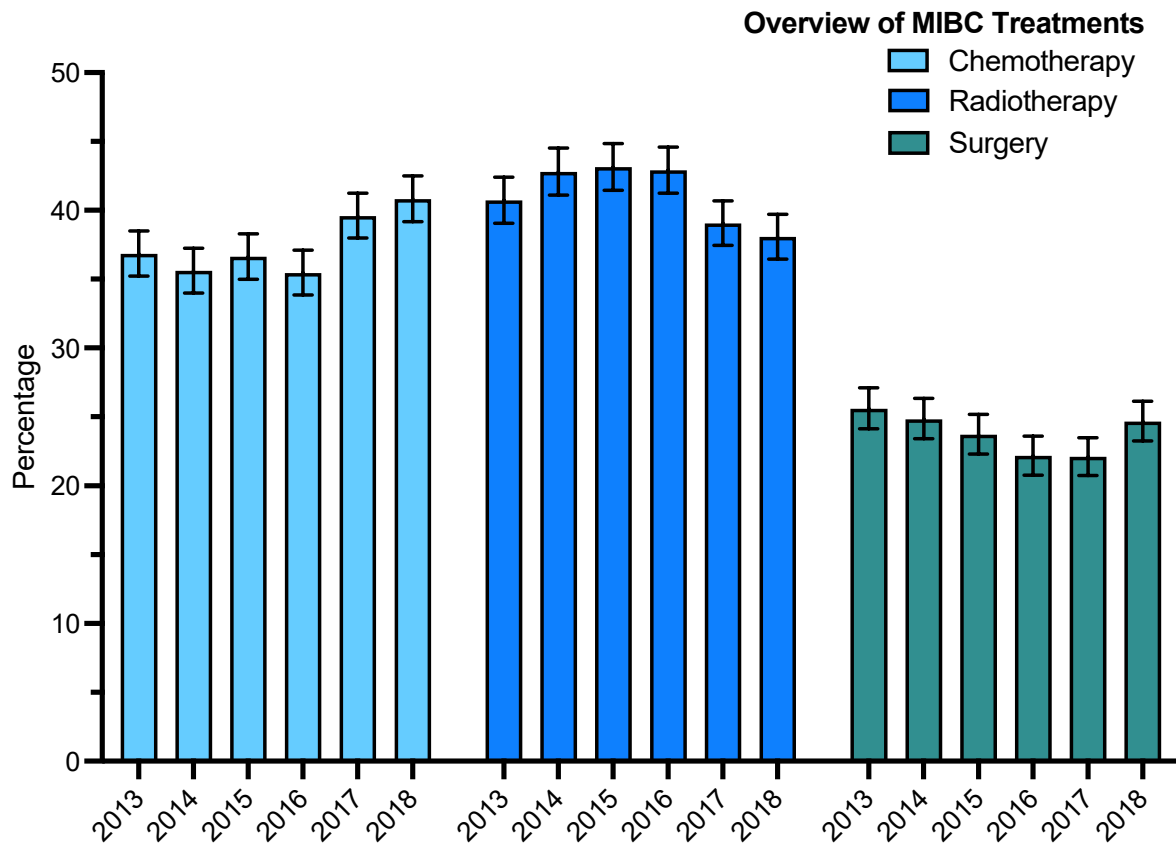


Supplementary figure 1. Prevalence of Bladder Cancer and UTUC 10-years since diagnosis.

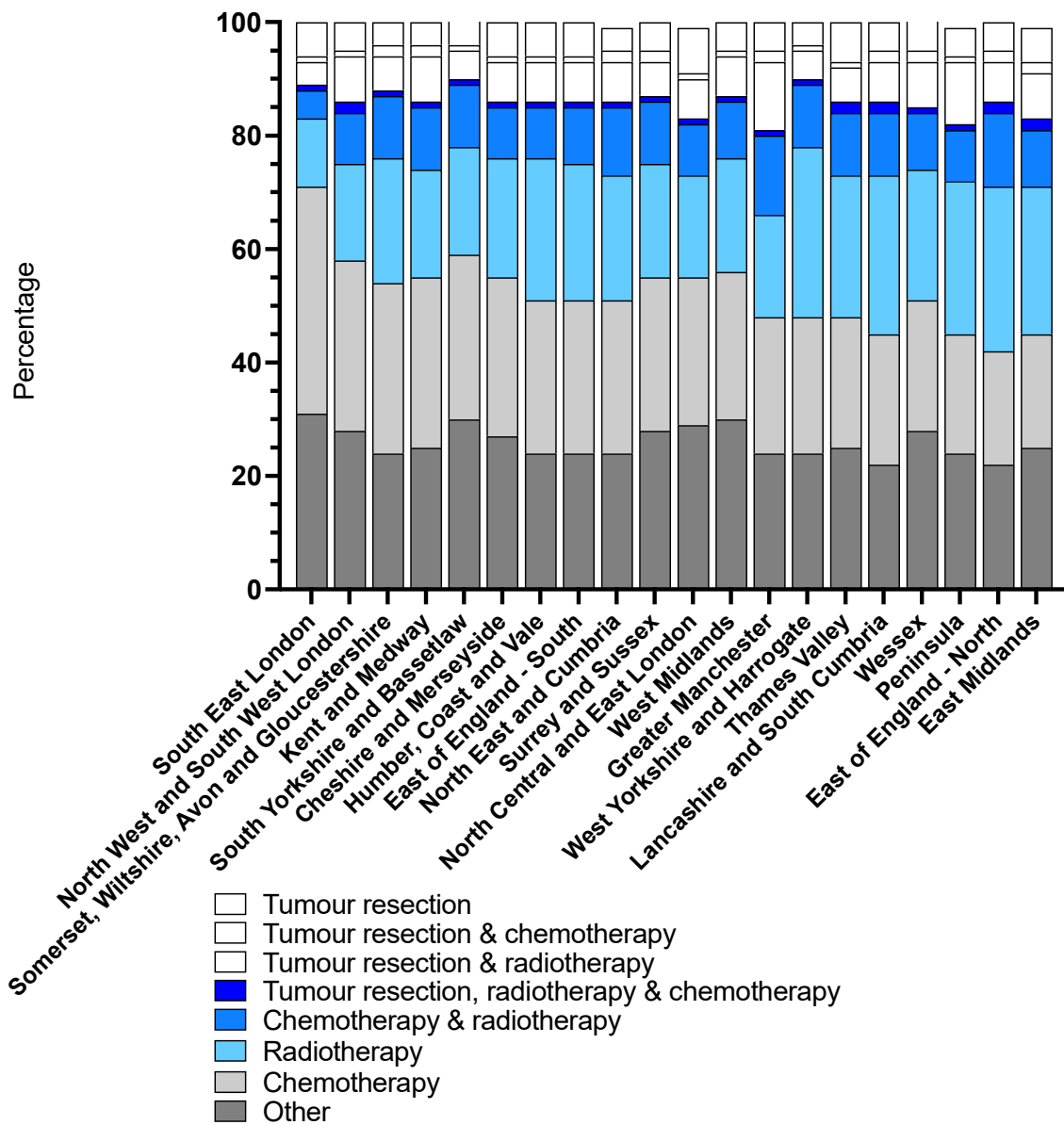
In 2019, there were 104,192 persons living with bladder cancer (green) and 8,625 living with UTUC (grey) 10 years after diagnosis.



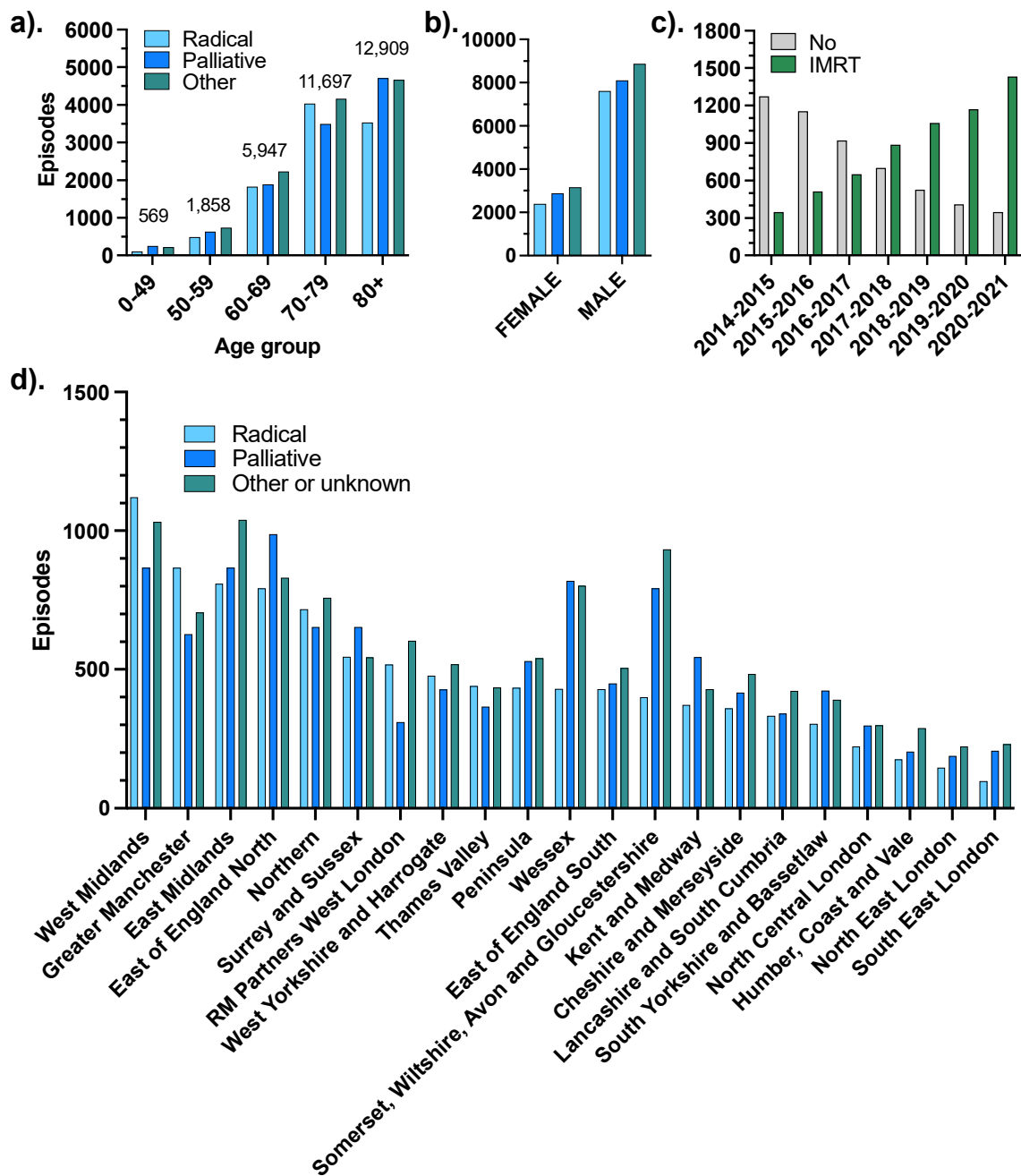
Supplementary figure 2. Emergency presentation of bladder cancer. a). Percentage of non-muscle invasive (NMI) and muscle invasive (MI) bladder cancers (BCs) and UTUCs presenting as an emergency from 2013 to 2018, b). Route to diagnosis for bladder cancer with respect to tumour stage (tumour from 2013-18). c). Percentage of MI and NMI bladder cancers presenting as an emergency for each NHS cancer alliance (compared to average for England in bold).



Supplementary figure 3. An overview of the use of chemotherapy, radiotherapy and radical surgery in patients with invasive bladder cancer from 2013 to 2018. Percentage of patients receiving one or more of each treatment shown.

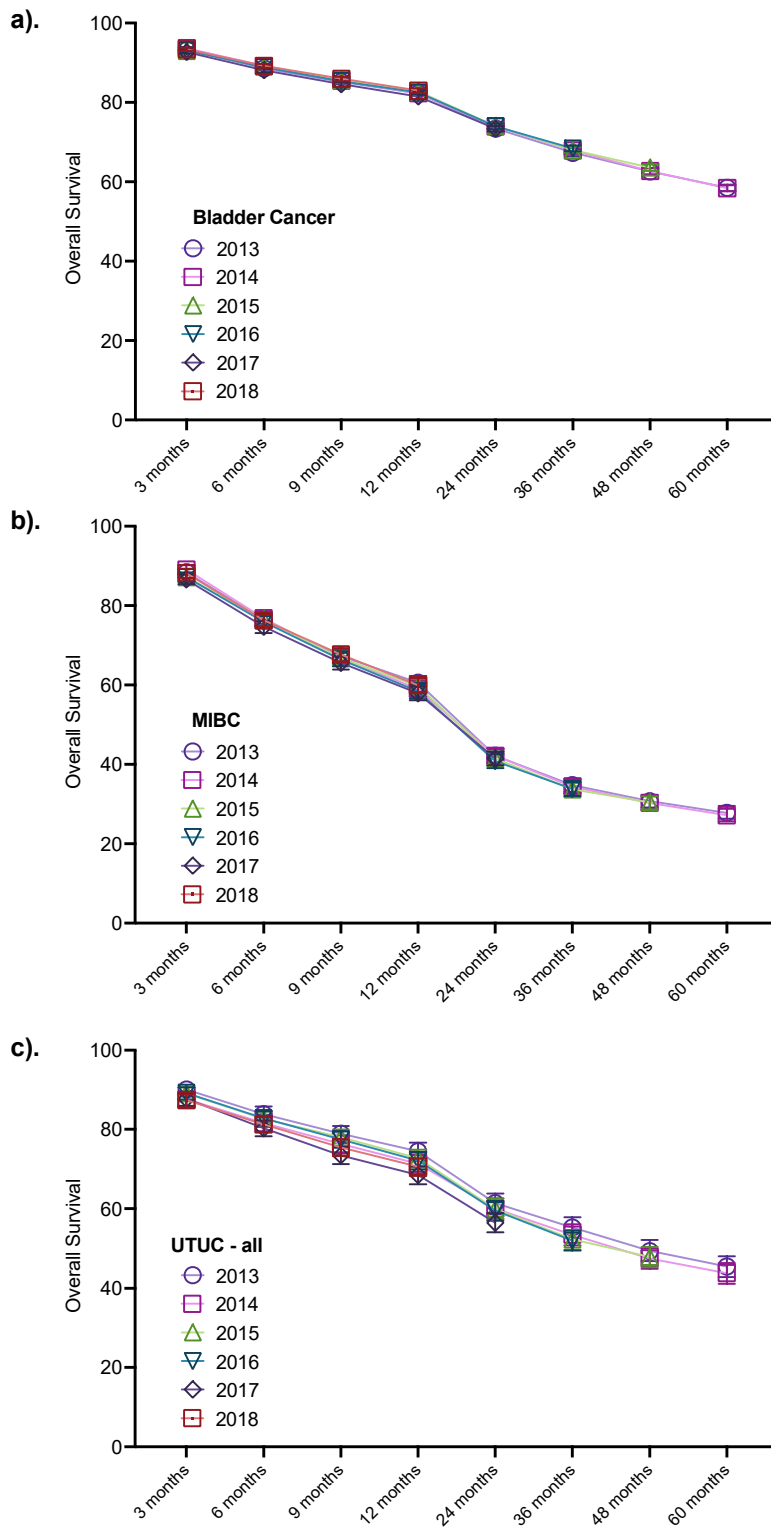


Supplementary figure 4. Use of chemotherapy, radiotherapy, surgery in isolation and combination in patients with bladder cancer from 2013 to 2018 according to cancer alliance.

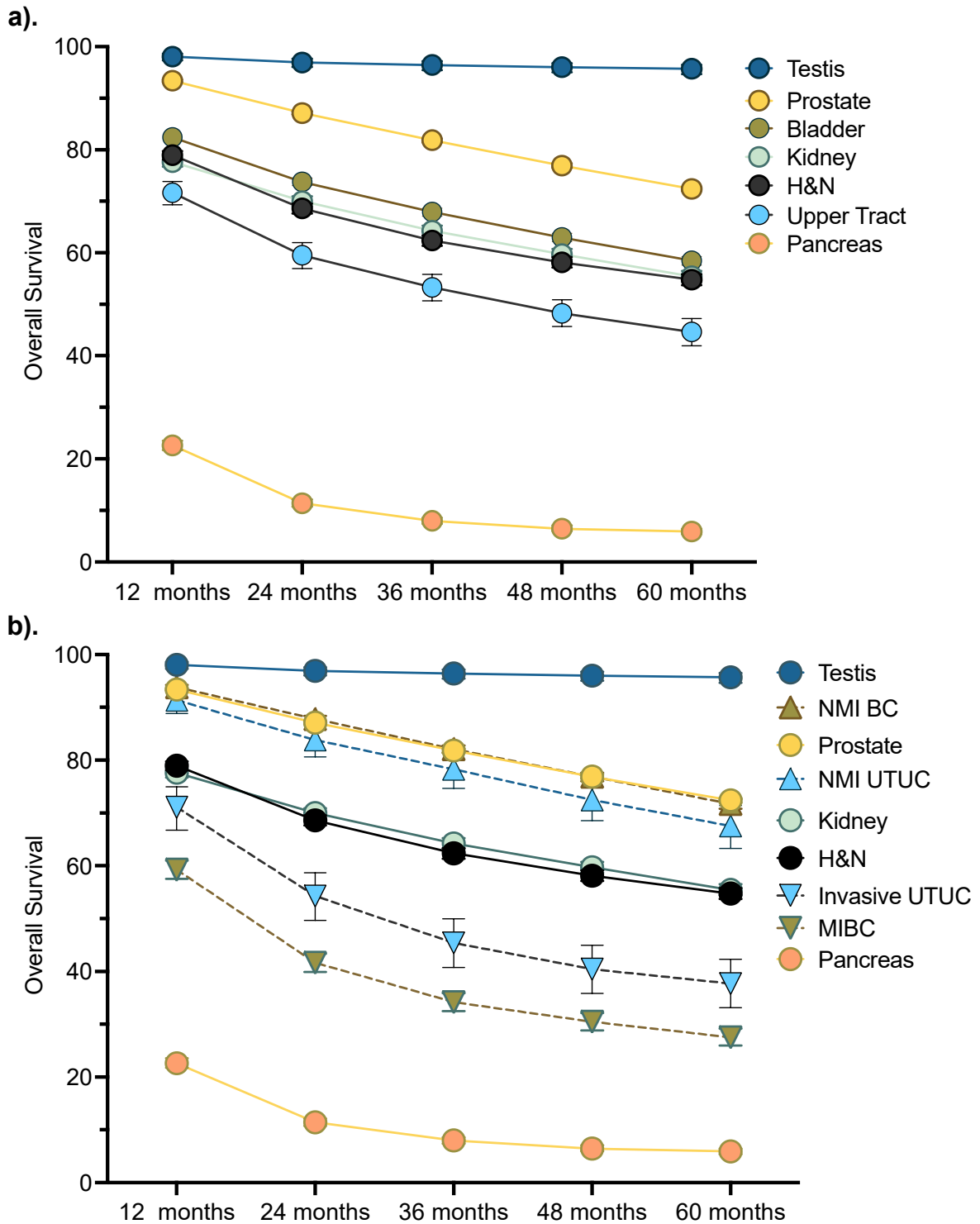


Supplementary figure 5. Patterns of radiotherapy use for advanced Bladder cancer.

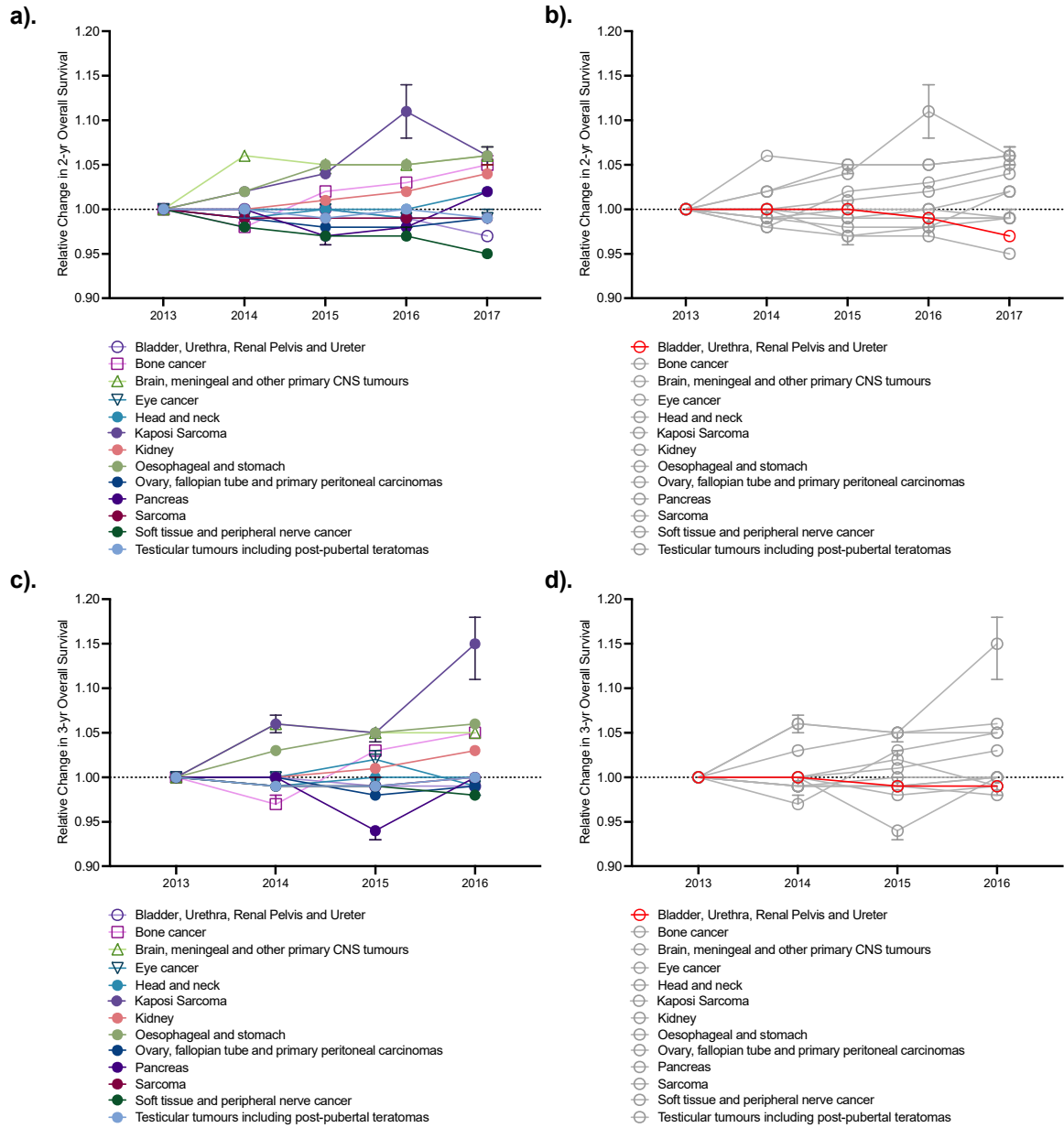
Radiotherapy regimens for patients with BC from 2009 to 2021 stratified by a). patient age and b). sex, c). The proportion of treatments using intensity modulated radiotherapy for years from 2014 to 2021, d). Use of radical, palliative and other radiotherapy regimens from 2009-2021 according to each NHS cancer alliance.



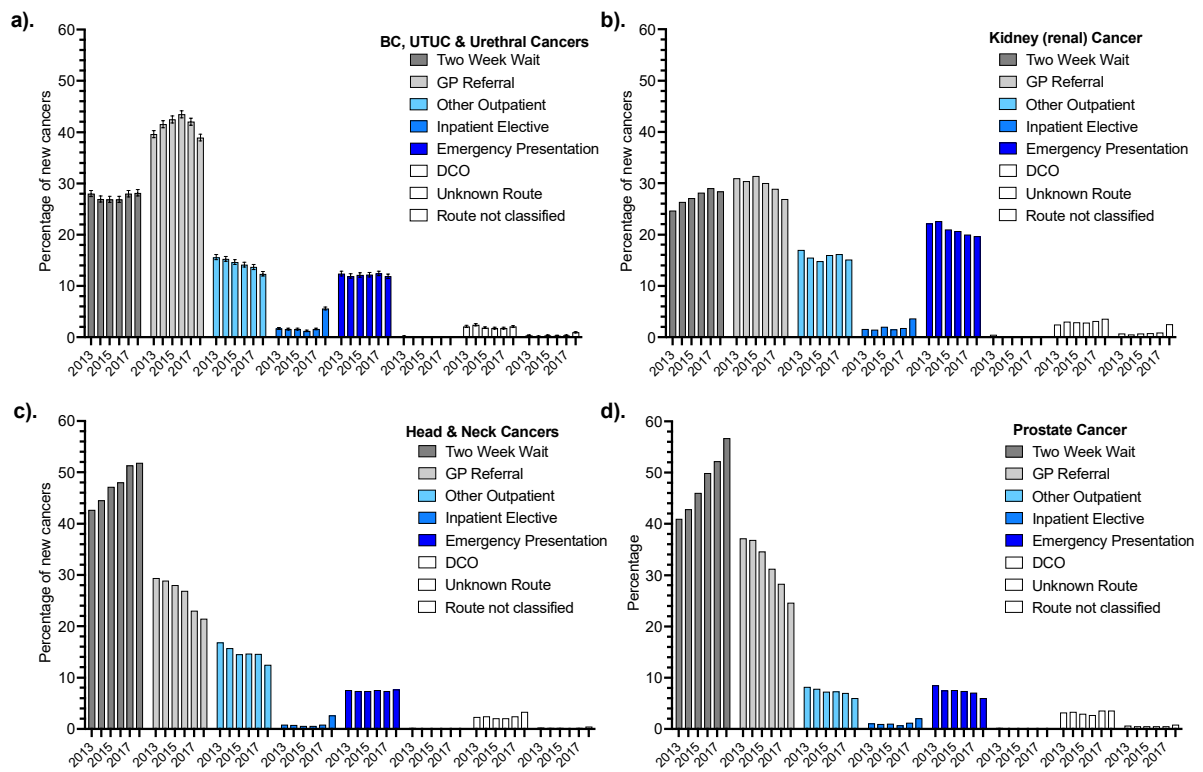
Supplementary figure 6. Overall survival for a). all urothelial bladder cancers, b). urothelial muscle invasive bladder cancers, and c). all upper tract urothelial cancers according to the year of diagnosis from 2013 to 2018.



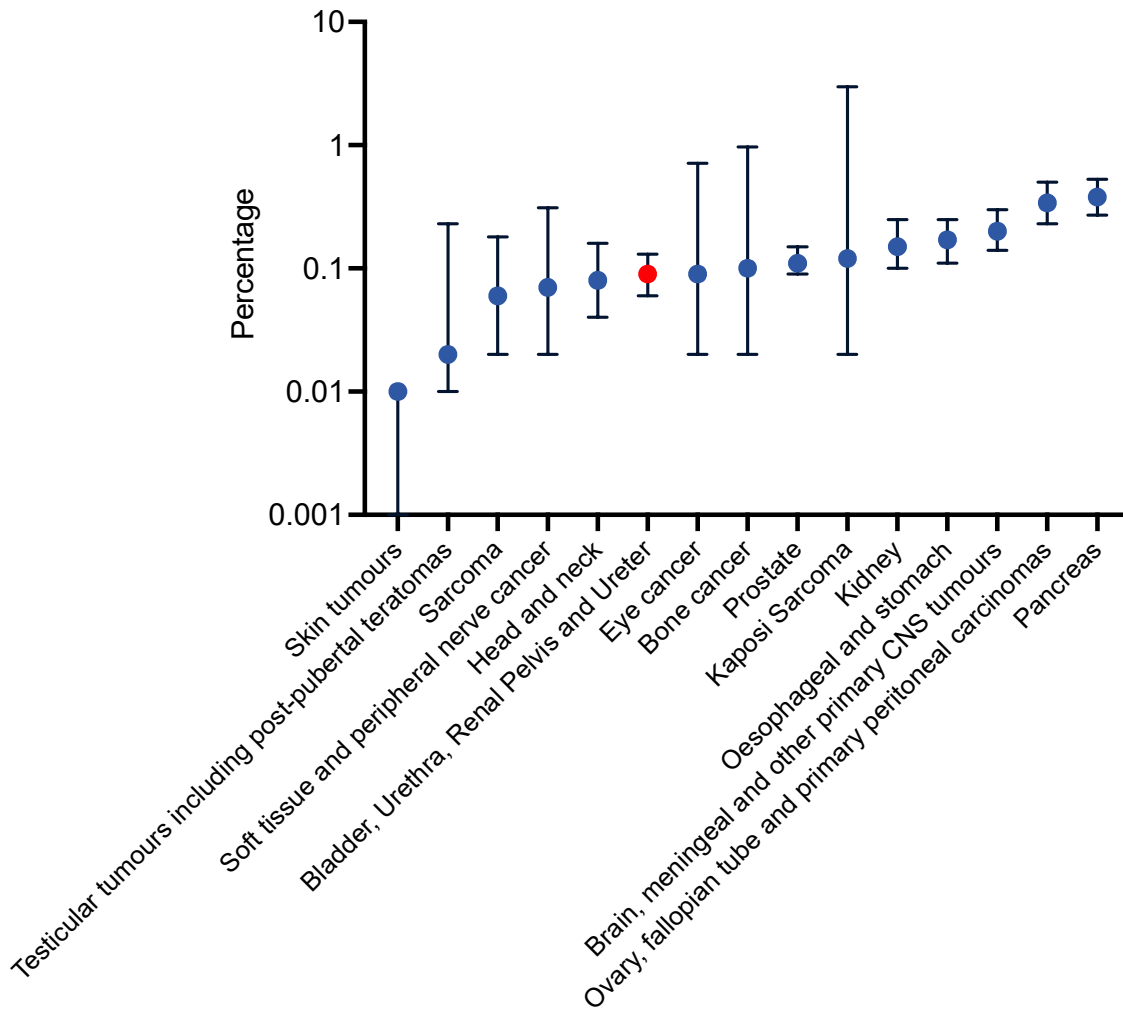
Supplementary figure 7. Average survival rates from 2013 to 2018 for a). common cancers (in b). BC and UTUC are sub-stratified by stage) within the National Cancer Registration and Analysis Service Data Repository.



Supplementary figure 8. Trends in overall survival for multiple cancers since 2013. For each cancer, the relative survival at 2-years (a. and b.) and 3-years (c. and d.) after diagnosis are shown for the years 2013 to 2018. For illustrative purposes, graphs are duplicated with all cancers coloured (a. and c.) or highlight to show bladder cancer (b. and d.).



Death Certification Diagnosis



Supplementary figure 10. Rates of certification through death certification diagnosis.

NMI BC	Number of NMI BC cases														Death Certificate Only							
	Two Week Wait	95% CI		GP referral	95% CI		Other Outpatient	95% CI		Inpatient Elective	95% CI		Emergency presentation	95% CI		Death Certificate Only	95% CI		Unknown	95% CI		
Cheshire and Merseyside	1,918	18%	17%	20%	52%	50%	54%	21%	19%	23%	1%	1%	2%	7%	6%	8%				1%	1%	2%
East Midlands	3,583	24%	23%	25%	48%	47%	50%	20%	19%	22%	1%	1%	2%	4%	4%	5%				2%	1%	2%
East of England	5,563	25%	24%	26%	51%	50%	53%	12%	12%	13%	3%	3%	4%	5%	5%	6%				3%	3%	4%
Greater Manchester	2,895	16%	14%	17%	56%	54%	58%	17%	16%	19%	2%	2%	3%	8%	7%	9%				1%	1%	2%
Humber, Coast and Vale	1,366	12%	10%	14%	66%	64%	69%	11%	10%	13%	3%	2%	4%	6%	5%	7%				2%	1%	3%
Kent and Medway	2,086	19%	17%	20%	43%	41%	45%	20%	18%	22%	10%	8%	11%	6%	5%	7%				3%	2%	4%
Lancashire and South Cumbria	1,938	20%	18%	22%	53%	51%	56%	14%	13%	16%	4%	3%	4%	7%	6%	9%				2%	1%	2%
North Central and North East London	2,488	24%	23%	26%	44%	42%	46%	15%	13%	16%	4%	3%	5%	10%	9%	11%				4%	3%	5%
North East and Cumbria	3,066	14%	13%	15%	62%	60%	64%	15%	14%	16%	3%	3%	4%	5%	4%	6%				1%	1%	2%
North West and South West London	3,028	16%	15%	17%	52%	51%	54%	16%	15%	18%	1%	1%	2%	10%	9%	11%				4%	4%	5%
Peninsula	1,680	12%	11%	14%	60%	57%	62%	20%	18%	22%	3%	2%	4%	4%	3%	5%				1%	1%	2%
Somerset, Wiltshire, Avon and Gloucestershire	2,571	17%	16%	19%	56%	54%	58%	19%	17%	20%	2%	1%	2%	5%	4%	6%				2%	2%	3%
South East London	1,382	14%	13%	16%	55%	53%	58%	15%	14%	17%	2%	1%	3%	8%	7%	10%				4%	4%	6%
South Yorkshire, Bassetlaw, North Derbyshire and Hardwick	1,636	18%	16%	20%	60%	57%	62%	14%	13%	16%	1%	1%	2%	6%	5%	8%				0%	0%	1%
Surrey and Sussex	4,716	17%	16%	19%	56%	55%	58%	13%	12%	14%	3%	3%	4%	6%	5%	7%	0%	0%		4%	3%	4%
Thames Valley	1,716	24%	22%	26%	41%	39%	43%	23%	21%	25%	4%	3%	5%	4%	3%	5%				5%	4%	6%
Wessex	2,304	27%	25%	29%	36%	34%	38%	22%	20%	23%	9%	8%	10%	5%	4%	6%				2%	2%	3%
West Midlands	4,561	23%	22%	24%	52%	50%	53%	15%	14%	16%	1%	1%	2%	6%	5%	7%				2%	2%	3%
West Yorkshire and Harrogate	2,074	15%	13%	17%	60%	58%	62%	12%	11%	14%	2%	2%	3%	8%	7%	10%				2%	2%	3%
England	50,571	19%	19%	20%	53%	52%	53%	16%	16%	17%	3%	3%	3%	6%	6%	7%	0%	0%	0%	3%	2%	3%
MIBC	Number of MIBC cases														Death Certificate Only							
	Two Week Wait	95% CI		GP referral	95% CI		Other Outpatient	95% CI		Inpatient Elective	95% CI		Emergency presentation	95% CI		Death Certificate Only	95% CI		Unknown	95% CI		
Cheshire and Merseyside	5,084	32%	31%	34%	30%	29%	31%	15%	14%	16%	2%	2%	3%	17%	16%	18%	0%	0%	1%	2%	2%	3%
East Midlands	7,400	40%	39%	41%	24%	23%	25%	15%	15%	16%	2%	2%	3%	17%	16%	18%	0%	0%	0%	2%	2%	2%
East of England	11,429	36%	35%	37%	29%	29%	30%	11%	11%	12%	3%	2%	3%	17%	17%	18%	0%	0%	0%	3%	3%	4%
Greater Manchester	4,932	30%	29%	31%	33%	31%	34%	13%	13%	14%	2%	2%	2%	20%	19%	22%	0%	0%	0%	2%	1%	2%
Humber, Coast and Vale	3,054	30%	29%	32%	40%	38%	41%	7%	7%	8%	5%	4%	6%	16%	14%	17%	0%	0%	0%	2%	2%	3%
Kent and Medway	3,653	36%	35%	38%	24%	23%	26%	14%	13%	15%	3%	3%	4%	19%	17%	20%	1%	1%	1%	3%	2%	4%
Lancashire and South Cumbria	3,812	40%	38%	41%	25%	24%	26%	13%	12%	14%	4%	3%	4%	18%	16%	19%	0%	0%	0%	2%	1%	2%
North Central and North East London	3,540	27%	25%	28%	30%	28%	31%	12%	11%	13%	3%	2%	3%	24%	23%	26%	1%	0%	1%	4%	3%	4%
North East and Cumbria	6,255	42%	41%	43%	25%	24%	26%	12%	11%	13%	3%	3%	3%	17%	16%	18%	0%	0%	0%	1%	1%	2%
North West and South West London	4,141	29%	27%	30%	31%	30%	33%	12%	11%	13%	2%	1%	2%	21%	20%	23%	1%	1%	1%	5%	4%	6%
Peninsula	3,668	41%	40%	43%	24%	23%	26%	14%	13%	15%	3%	2%	3%	16%	15%	17%	0%	0%	1%	2%	1%	2%
Somerset, Wiltshire, Avon and Gloucestershire	5,294	39%	37%	40%	26%	25%	28%	12%	12%	13%	2%	2%	3%	17%	16%	18%	0%	0%	1%	3%	3%	3%
South East London	2,199	29%	27%	31%	33%	31%	35%	11%	10%	13%	1%	1%	2%	22%	20%	24%	0%	0%	1%	3%	2%	3%
South Yorkshire, Bassetlaw, North Derbyshire and Hardwick	3,448	38%	37%	40%	24%	23%	26%	16%	15%	17%	2%	2%	3%	18%	17%	20%	0%	0%	1%	1%	1%	2%
Surrey and Sussex	5,628	35%	34%	36%	30%	29%	31%	10%	10%	11%	3%	2%	3%	18%	17%	19%	0%	0%	1%	4%	4%	5%
Thames Valley	3,572	41%	40%	43%	22%	20%	23%	13%	12%	14%	5%	5%	6%	15%	14%	16%	0%	0%	1%	4%	3%	5%
Wessex	5,063	36%	34%	37%	24%	23%	25%	14%	13%	15%	6%	5%	7%	17%	16%	19%	0%	0%	1%	3%	2%	3%
West Midlands	9,892	40%	39%	41%	27%	27%	28%	11%	10%	11%	1%	1%	2%	18%	18%	19%	0%	0%	0%	2%	2%	3%
West Yorkshire and Harrogate	4,462	37%	36%	39%	26%	24%	27%	9%	8%	10%	4%	3%	4%	21%	20%	23%	0%	0%	0%	3%	3%	4%
England	96,526	36%	36%	37%	28%	27%	28%	12%	12%	13%	3%	3%	3%	18%	18%	18%	0%	0%	0%	3%	3%	3%

Supplementary table 1. Routes to diagnosis for NMIBC and MIBC for each cancer alliance (from <https://www.cancerdata.nhs.uk/routestodiagnosis/index>).

Year	Tumour Type	Tumour Type 3	Stage	Stage Detail	Incidence (case number)	Chemotherapy (CT) only percentage	CT only percentage LO	CT only percentage UCI	Radiotherapy (RT) only percentage	RT only percentage LO	RT only percentage UCI	Surgery only percentage	Surgery only percentage LO	Surgery only percentage UCI	CT and RT percentage	CT and RT percentage LO	CT and RT percentage UCI	Surgery and CT percentage	Surgery and CT percentage LO	Surgery and CT percentage UCI	Surgery and RT percentage	Surgery and RT percentage LO	Surgery and RT percentage UCI	Surgery and CT and RT percentage	Surgery and CT and RT percentage LO	Surgery and CT and RT percentage UCI	Other care percentage	Other care percentage LO	Other care percentage UCI	
2013	Renal Pelvis and Ureter	All	Non-muscle-invasive	T1	277	3.6%	2.0%	6.5%	2.2%	1.0%	4.6%	66.8%	61.0%	72.1%	0.4%	0.1%	2.0%	5.4%	3.3%	8.7%	1.8%	0.8%	4.2%	0.0%	0.0%	1.4%	19.9%	15.6%	25.0%	
2013	Renal Pelvis and Ureter	All	Muscle-invasive	All	644	2.5%	1.5%	4.0%	1.1%	0.5%	2.2%	58.2%	54.4%	62.0%	0.9%	0.4%	2.0%	15.4%	12.8%	18.4%	4.2%	2.9%	6.0%	2.8%	1.8%	4.4%	14.9%	12.4%	17.9%	
2013	Renal Pelvis and Ureter	All	Stage unknown	All	485	9.9%	7.5%	12.9%	8.7%	6.5%	11.1%	8.6%	14.2%	2.5%	1.4%	4.3%	2.7%	1.6%	4.5%	0.6%	0.2%	1.8%	0.2%	0.0%	1.2%	64.3%	60.0%	68.5%		
2013	Bladder	Urothelial	Non-muscle-invasive	T1	3599	1.3%	1.0%	1.7%	0.6%	0.4%	0.9%	50.9%	49.3%	52.5%	0.1%	0.1%	0.3%	39.5%	37.9%	41.1%	2.8%	2.3%	3.4%	1.9%	1.5%	2.4%	2.9%	2.4%	3.5%	
2013	Bladder	Urothelial	Muscle-invasive	All	3290	7.6%	6.8%	8.6%	22.2%	20.8%	23.7%	11.9%	10.8%	13.0%	16.3%	15.1%	17.6%	11.6%	10.6%	12.8%	0.9%	0.6%	1.3%	1.2%	0.9%	1.7%	28.2%	26.7%	29.8%	
2013	Bladder	Urothelial	Stage unknown	All	1490	8.7%	7.3%	10.2%	6.8%	5.7%	8.2%	1.1%	0.7%	1.8%	2.6%	1.9%	3.5%	1.3%	0.9%	2.1%	0.1%	0.0%	0.4%	0.1%	0.0%	0.5%	79.3%	77.1%	81.2%	
2013	Bladder	Other	All stages	All	636	7.2%	5.5%	9.5%	13.2%	10.8%	16.1%	22.6%	19.6%	26.1%	10.7%	8.5%	13.3%	7.4%	5.6%	9.7%	2.4%	1.4%	3.9%	2.2%	1.3%	3.7%	34.3%	30.7%	38.1%	
2013	Bladder	Other	Non-muscle-invasive	All	414	8.0%	5.7%	11.0%	14.7%	11.6%	18.5%	23.4%	19.6%	27.7%	14.0%	11.0%	17.7%	7.5%	5.3%	10.4%	2.2%	1.1%	4.1%	1.2%	0.5%	2.8%	29.0%	24.8%	33.5%	
2013	Bladder	Other	Stage unknown	All	134	9.0%	5.2%	15.0%	17.2%	11.7%	24.4%	7.5%	4.1%	13.2%	7.5%	4.1%	13.2%	2.2%	0.8%	6.4%	0.0%	0.0%	2.8%	0.7%	0.1%	4.1%	56.0%	47.5%	64.1%	
2014	Renal Pelvis and Ureter	All	Non-muscle-invasive	T1	299	3.0%	1.6%	5.6%	0.0%	0.0%	1.3%	64.5%	59.0%	69.8%	0.7%	0.2%	2.4%	7.4%	4.9%	10.9%	0.7%	0.2%	2.4%	0.0%	0.0%	1.3%	23.7%	19.3%	28.9%	
2014	Renal Pelvis and Ureter	All	Muscle-invasive	All	673	5.7%	1.6%	4.0%	1.5%	0.8%	1.4%	56.6%	52.8%	60.3%	2.1%	1.2%	3.5%	17.1%	14.4%	20.1%	3.3%	2.2%	4.9%	2.5%	1.6%	4.0%	14.4%	12.0%	17.3%	
2014	Renal Pelvis and Ureter	All	Stage unknown	All	443	7.9%	5.7%	10.8%	8.4%	6.1%	11.3%	9.5%	7.1%	12.6%	4.7%	3.1%	7.1%	0.9%	0.4%	2.3%	0.2%	0.0%	1.3%	0.2%	0.3%	1.3%	68.2%	63.7%	72.3%	
2014	Bladder	Urothelial	Non-muscle-invasive	T1	3667	1.0%	0.8%	1.4%	0.3%	0.2%	0.6%	52.0%	50.3%	53.6%	0.1%	0.0%	0.2%	37.9%	36.3%	39.5%	3.2%	2.3%	3.4%	1.7%	1.3%	2.2%	4.2%	3.6%	4.9%	
2014	Bladder	Urothelial	Muscle-invasive	All	3264	7.1%	6.3%	8.1%	25.4%	24.0%	27.0%	11.2%	10.1%	12.3%	15.6%	14.4%	16.8%	11.9%	10.8%	13.0%	0.8%	0.5%	1.2%	1.0%	0.7%	1.4%	27.0%	25.5%	28.6%	
2014	Bladder	Urothelial	Stage unknown	All	1186	7.2%	5.8%	8.8%	5.9%	4.7%	7.4%	0.8%	0.4%	1.4%	2.0%	1.5%	3.2%	0.8%	0.4%	1.4%	0.0%	0.0%	0.3%	0.2%	0.0%	0.6%	83.1%	80.8%	85.1%	
2014	Bladder	Other	All stages	All	617	6.2%	4.5%	8.3%	11.8%	9.5%	14.6%	26.1%	22.8%	29.7%	10.0%	9.7%	14.8%	6.5%	4.8%	8.7%	3.6%	2.4%	5.3%	2.4%	1.5%	4.0%	31.4%	27.9%	35.2%	
2014	Bladder	Other	Non-muscle-invasive	All	391	5.4%	3.5%	8.1%	14.8%	11.7%	18.7%	23.5%	19.6%	28.0%	12.5%	12.1%	19.3%	7.2%	5.0%	10.2%	3.3%	2.0%	5.6%	1.3%	0.5%	3.0%	23.2%	24.9%	33.8%	
2014	Bladder	Other	Stage unknown	All	122	10.7%	6.3%	17.4%	10.7%	6.3%	17.4%	16.4%	10.9%	24.0%	10.7%	6.3%	17.4%	5.3%	0.8%	7.0%	0.8%	0.1%	4.5%	0.8%	0.6%	4.5%	47.5%	38.9%	56.3%	
2015	Renal Pelvis and Ureter	All	Non-muscle-invasive	T1	323	2.5%	1.3%	4.8%	0.9%	0.3%	2.7%	65.6%	60.3%	70.6%	0.3%	0.1%	1.7%	7.7%	5.3%	11.2%	0.6%	0.2%	2.2%	0.0%	0.0%	1.2%	22.3%	18.1%	27.1%	
2015	Renal Pelvis and Ureter	All	Muscle-invasive	All	741	3.9%	2.7%	5.6%	1.9%	1.1%	3.1%	54.1%	50.5%	57.7%	1.6%	0.9%	2.8%	16.1%	13.6%	18.9%	3.2%	2.2%	4.8%	3.5%	2.4%	5.1%	15.7%	13.2%	18.4%	
2015	Renal Pelvis and Ureter	All	Stage unknown	All	439	8.9%	6.6%	11.9%	7.5%	5.4%	10.4%	7.1%	5.0%	9.8%	4.3%	2.8%	6.7%	0.7%	0.2%	2.0%	0.5%	0.1%	1.6%	0.2%	0.0%	1.3%	70.8%	66.4%	74.9%	
2015	Renal Pelvis and Ureter	All	Non-muscle-invasive	T1	3615	0.9%	0.7%	1.3%	0.2%	0.1%	0.5%	52.0%	50.3%	53.6%	0.1%	0.1%	0.3%	38.8%	37.2%	40.4%	2.8%	2.3%	3.4%	1.9%	1.5%	2.4%	3.2%	2.7%	3.8%	
2015	Bladder	Urothelial	Non-muscle-invasive	All	3313	7.4%	6.6%	8.3%	25.7%	24.2%	27.2%	10.2%	9.2%	11.3%	16.1%	14.9%	17.4%	12.3%	11.2%	13.4%	0.5%	0.3%	0.8%	0.5%	1.1%	27.0%	25.5%	28.6%		
2015	Bladder	Urothelial	Stage unknown	All	1162	5.9%	4.6%	7.4%	6.8%	5.5%	8.4%	0.3%	0.1%	0.9%	2.2%	1.5%	3.2%	0.3%	0.1%	0.9%	0.0%	0.0%	0.3%	0.2%	0.0%	0.6%	84.3%	82.1%	86.3%	
2015	Bladder	Other	All stages	All	618	6.8%	5.1%	8.1%	14.7%	12.1%	17.7%	21.7%	18.6%	25.1%	9.1%	7.6%	12.3%	5.7%	4.1%	7.8%	2.9%	1.9%	4.6%	1.3%	0.7%	2.5%	37.2%	33.5%	41.1%	
2015	Bladder	Other	Non-muscle-invasive	All	421	7.6%	5.4%	10.5%	18.8%	15.3%	22.8%	20.4%	16.9%	24.5%	12.4%	14.2%	9.5%	15.8%	4.3%	2.7%	6.7%	1.9%	1.0%	3.7%	1.4%	0.7%	3.1%	33.3%	28.9%	37.9%
2015	Bladder	Other	Stage unknown	All	113	8.0%	4.2%	14.4%	8.9%	4.9%	15.8%	8.0%	4.2%	14.4%	6.2%	3.0%	12.2%	4.4%	1.9%	9.9%	0.0%	0.0%	3.3%	0.9%	0.2%	4.8%	63.7%	54.5%	72.0%	
2016	Renal Pelvis and Ureter	All	Non-muscle-invasive	T1	307	2.9%	1.6%	5.5%	1.3%	0.5%	3.3%	63.8%	58.3%	69.0%	0.3%	0.5%	3.3%	7.2%	4.8%	10.6%	0.3%	0.1%	1.8%	0.0%	0.0%	1.2%	21.1%	18.8%	28.2%	
2016	Renal Pelvis and Ureter	All	Muscle-invasive	All	708	4.4%	3.1%	6.1%	1.7%	1.0%	2.9%	54.9%	51.3%	58.6%	1.6%	0.9%	2.8%	20.2%	17.4%	23.3%	3.1%	2.1%	4.7%	1.8%	1.1%	3.1%	12.3%	10.8%	14.9%	
2016	Renal Pelvis and Ureter	All	Stage unknown	All	484	6.0%	4.2%	8.5%	7.2%	5.2%	9.9%	7.9%	5.8%	10.6%	2.9%	1.7%	4.8%	1.0%	0.4%	2.4%	0.8%	0.3%	2.1%	0.0%	0.0%	0.8%	74.2%	70.1%	77.9%	
2016	Bladder	Urothelial	Non-muscle-invasive	T1	3626	0.9%	0.7%	1.3%	0.2%	0.1%	0.4%	50.6%	49.0%	52.3%	0.1%	0.0%	0.3%	40.2%	38.6%	41.8%	3.0%	2.4%	3.6%	2.0%	1.6%	2.5%	3.1%	2.5%	3.7%	
2016	Bladder	Urothelial	Muscle-invasive	All	3333	7.6%	6.7%	8.5%	25.1%	23.7%	26.6%	9.7%	8.7%	10.7%	16.3%	15.1%	17.6%	11.0%	10.0%	12.1%	0.8%	0.6%	1.2%	0.7%	0.4%	1.0%	28.9%	27.4%	30.4%	
2016	Bladder	Urothelial	Stage unknown	All	1056	6.4%	5.1%	8.1%	5.8%	4.5%	7.4%	1.0%	0.6%	1.9%	1.6%	1.0%	2.6%	0.9%	0.4%	1.6%	0.1%	0.0%	0.5%	0.1%	0.0%	0.5%	84.1%	81.8%	86.2%	
2016	Bladder	Other	All stages	All	610	6.2%	4.6%	8.4%	12.0%	9.6%	14.8%	28.9%	25.4%	32.6%	7.2%	7.1%	11.7%	6.6%	4.9%	8.8%	3.6%	2.4%	5.4%	1.5%	0.8%	2.8%	31.3%	28.9%	35.9%	
2016	Bladder	Other	Non-muscle-invasive	All	398	6.8%	4.7%	9.7%	14.8%	11.7%	18.7%	25.4%	21.4%	29.9%	13.1%	10.1%	16.7%	7.0%	4.9%	10.0%	1.5%	0.7%	3.3%	1.0%	0.4%	2.6%	30.4%	26.1%	35.1%	
2016	Bladder	Other	Stage unknown	All	109	7.3%	3.8%	13.8%	11.9%	7.1%	19.3%	17.4%	11.5%	25.6%	3.7%	1.4%	9.1%	0.9%	0.2%	5.0%	0.9%	0.2%	5.0%	0.9%	0.2%	5.0%	56.9%	47.5%	65.8%	
2017	Renal Pelvis and Ureter	All	Non-muscle-invasive	T1	256	2.3%	1.1%	5.0%	1.6%	0.6%	3.9%	65.2%	59.2%	70.8%	0.8%	0.2%	2.8%	8.2%	5.4%	12.2%	0.4%	0.1%	2.2%	0.4%	0.1%	2.2%	21.1%	16.5%	26.5%	
2017	Renal Pelvis and Ureter	All	Muscle-invasive	All	717	3.8%	2.6%	5.4%	1.7%	1.0%	2.9%	51.9%	48.2%	55.5%	1.4%	0.8%	2.5%	21.2%	18.4%	24.3%	2.2%	1.4%	3.6%	2.9%	1.9%	4.4%	14.9%	12.5%	17.7%	
2017	Renal Pelvis and Ureter	All	Stage unknown	All	464	11.4%	8.8%	14.6%	6.3%	4.4%	8.8%	4.1%	2.6%	6.3%	4.3%	2.8%	6.6%	1.3%	0.6%	2.8%	0.0%	0.0%	0.8%	0.2%	0.0%	1.2%	72.4%	68.2%	76.3%	
2017	Bladder	Urothelial	Non-muscle-invasive	T1	3579	1.1%	0.8%	1.5%	0.2%	0.1%	0.4%	48.5%	41.9%	45.2%	0.1%	0.0%	0.2%	48.2%	46.6%	49.9%	2.3%	1.9%	2.9%	2.0%	1.6%	2.5%	2.5%	2.1%	3.1%	
2017	Bladder	Urothelial	Muscle-invasive	All	3508	10.6%	9.7%	11.7%	21.0%	19.7%	22.4%	9.4%	8.5%	10.4%	16.8%	15.6%	18.0%	11.5%	10.5%	12.6%	0.5%	0.3%	0.8%	0.7%	0.4%	1.0%	29.5%	28.0%	31.0%	
2017	Bladder	Urothelial	Stage unknown	All	1091	8.2%	6.8%	10.0%	5.0%	3.8%	6.4%	0.6%	0.3%	1.2%	1.7%	1.0%	2.6%	0.6%	0.3%	1.3%	0.1%	0.0%	0.5%	0.0%	0.0%	0.4%	83.9%	81.6%	85.9%	
2017	Bladder	Other	All stages	All	646	7.1%	5.4																							