

Figure S1: 8-week CS

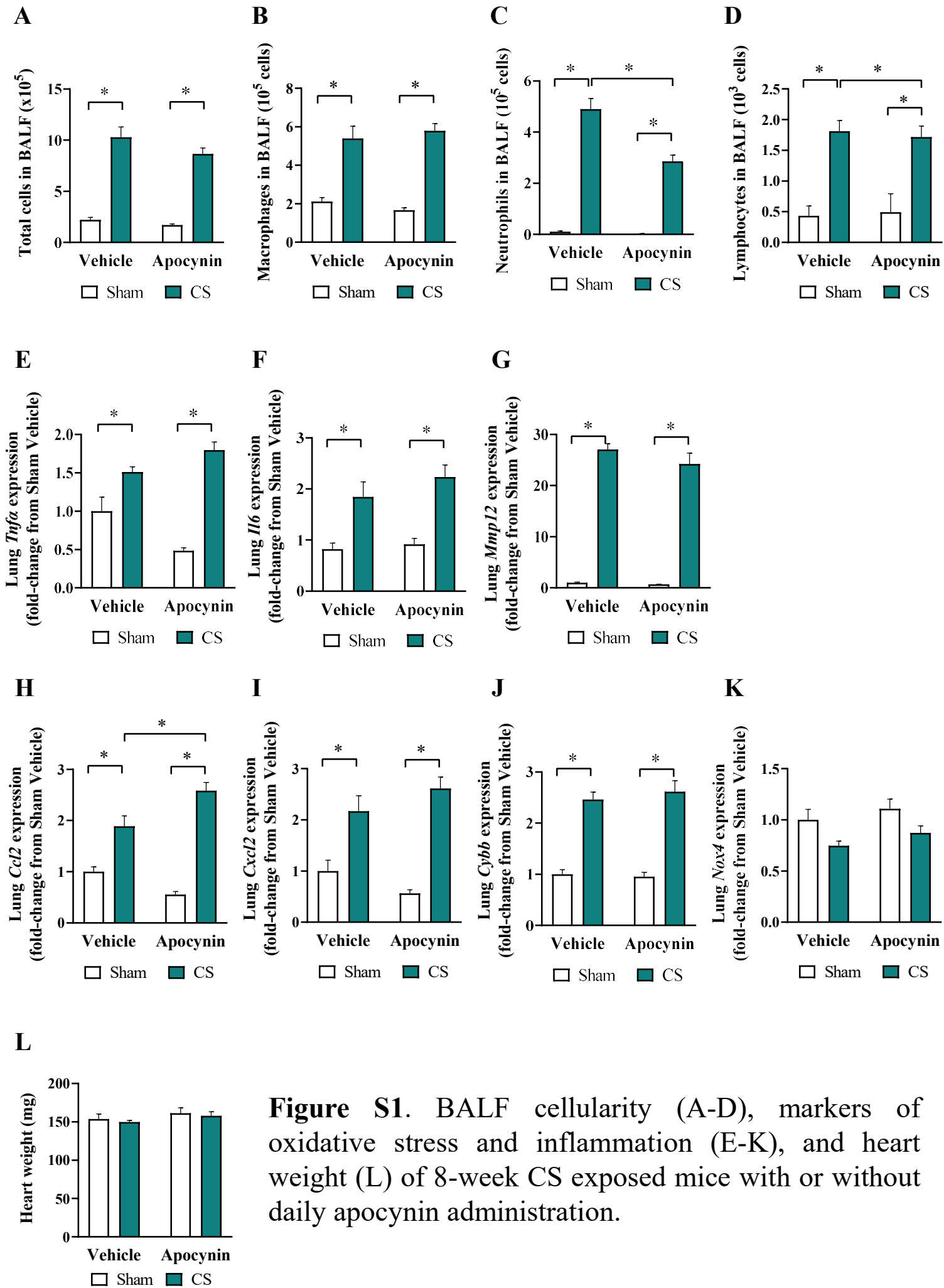


Figure S1. BALF cellularity (A-D), markers of oxidative stress and inflammation (E-K), and heart weight (L) of 8-week CS exposed mice with or without daily apocynin administration.

Figure S2: 24-week CS

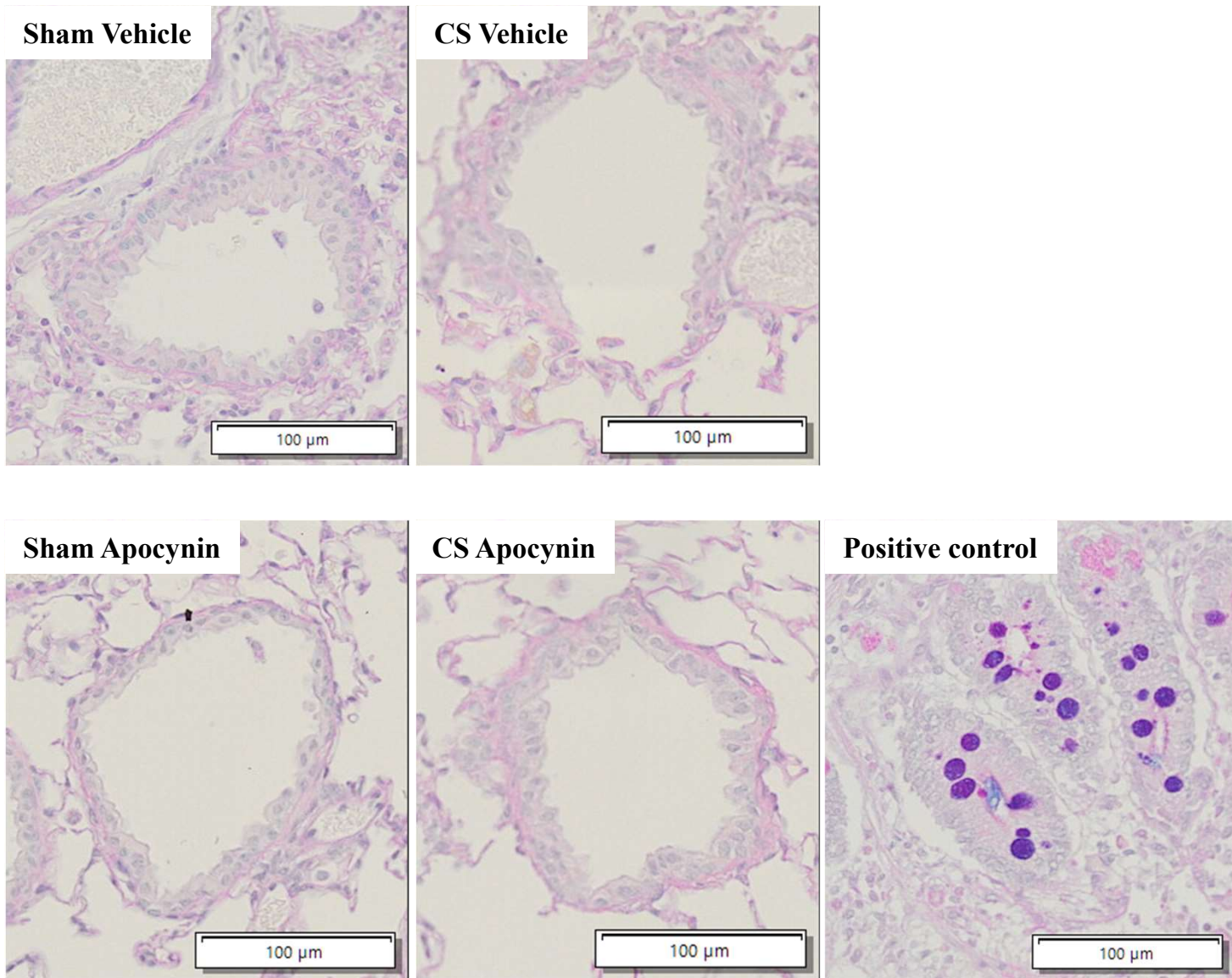


Figure S2. Representative images of lung sections stained with Alcian blue-periodic acid Schiff for mucus secretion. Kidney section was included as positive control.