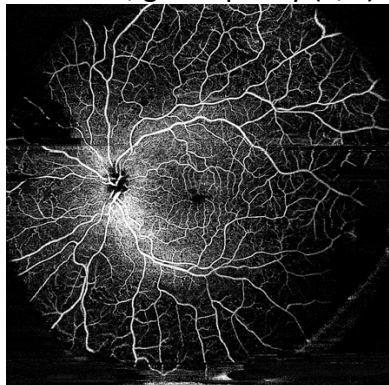


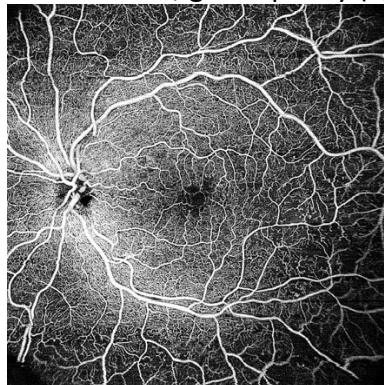
Comparison of the quality differences in the characteristics considered of the same eye

FAZ

with WFL, good quality (4/5)



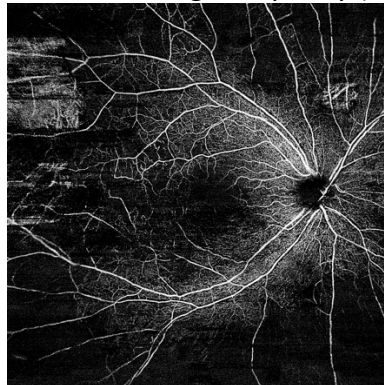
without WFL, good quality (5/5)



with WFL, bad quality (1/5)

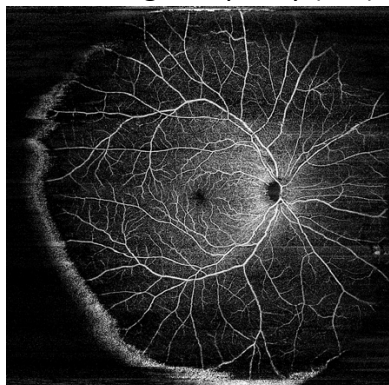


without WFL, good quality (5/5)

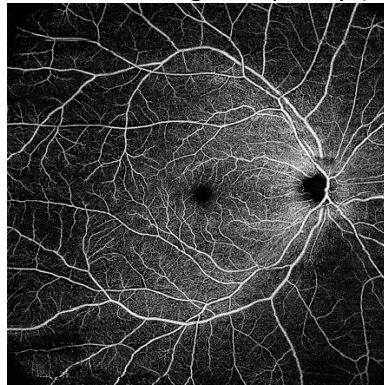


Motion artefacts

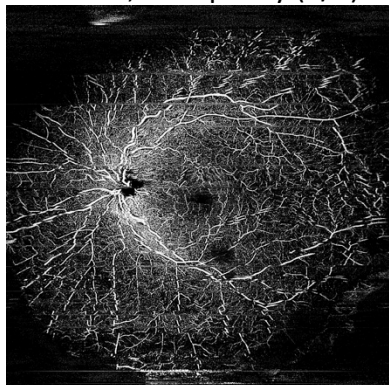
with WFL, good quality (4/5)



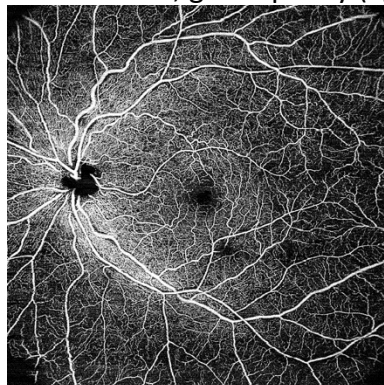
without WFL, good quality (5/5)



with WFL, bad quality (1/5)

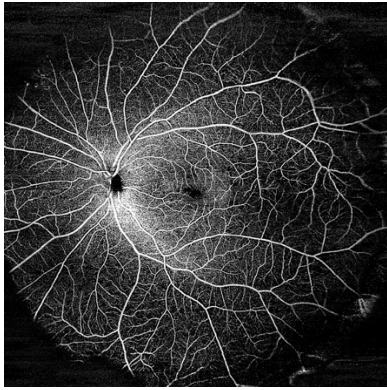


without WFL, good quality (5/5)

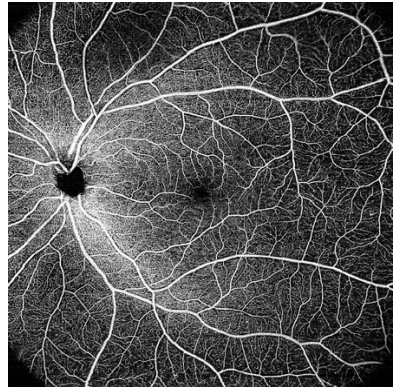


Shadowing

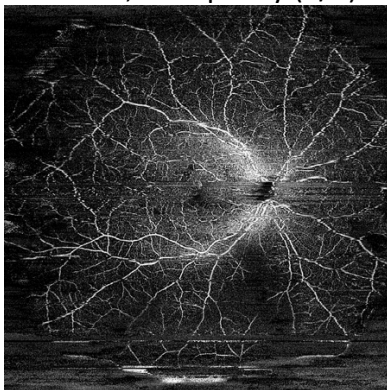
with WFL, good quality (5/5)



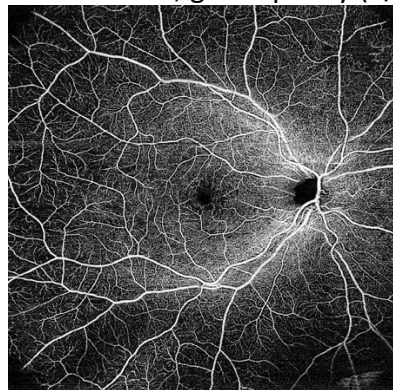
without WFL, good quality (5/5)



with WFL, bad quality (2/5)

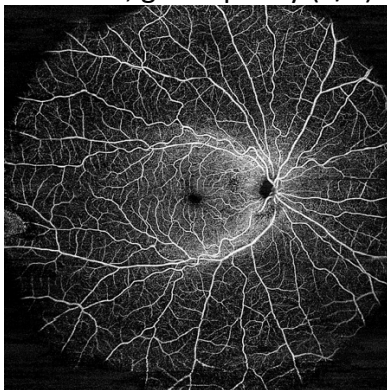


without WFL, good quality (4/5)

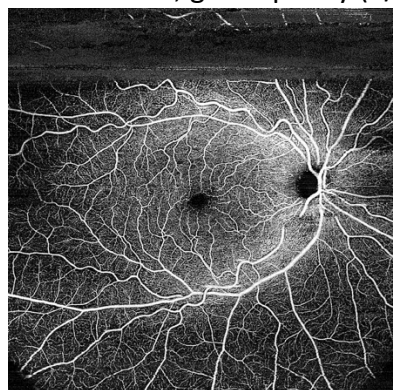


Vascular quality

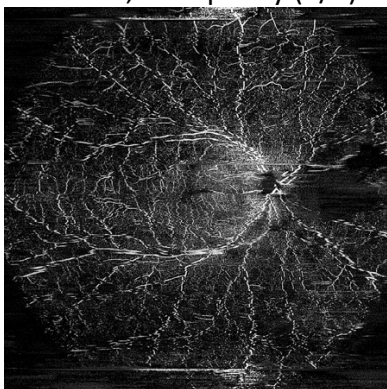
with WFL, good quality (5/5)



without WFL, good quality (5/5)



with WFL, bad quality (2/5)



without WFL, good quality (5/5)

