

Supplementary Data 1: Intact Mass Analysis by LC-MS

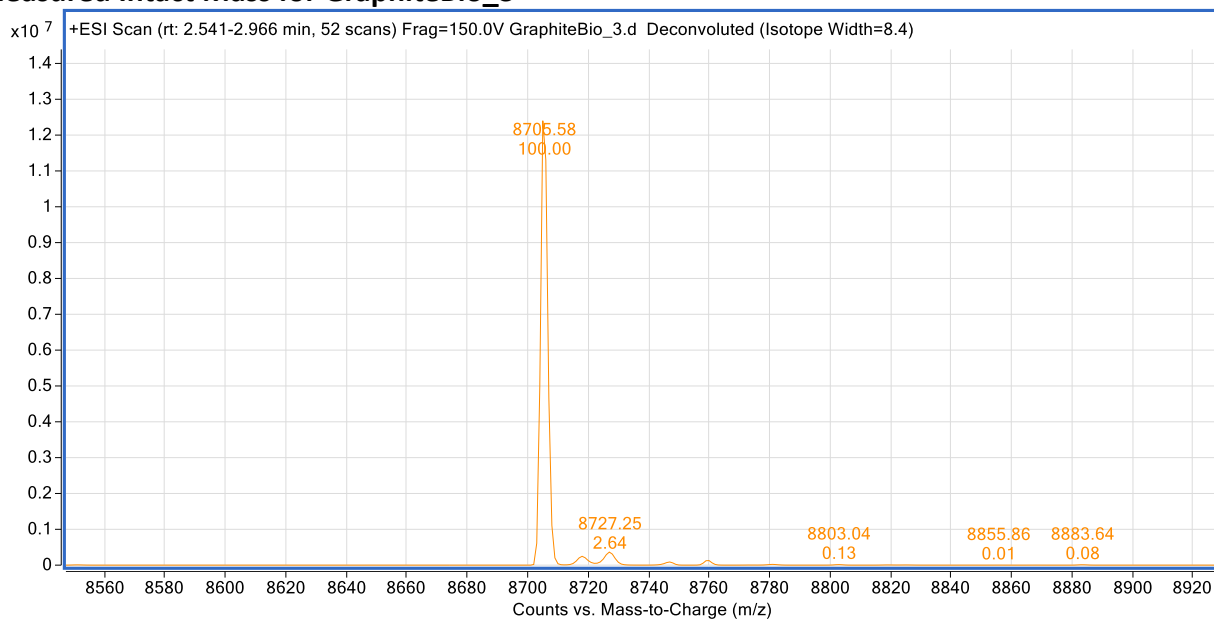
The data in this supplement was generated by JadeBio, Inc. and is reported here as is.

LC-MS without reduction and deglycosylation.

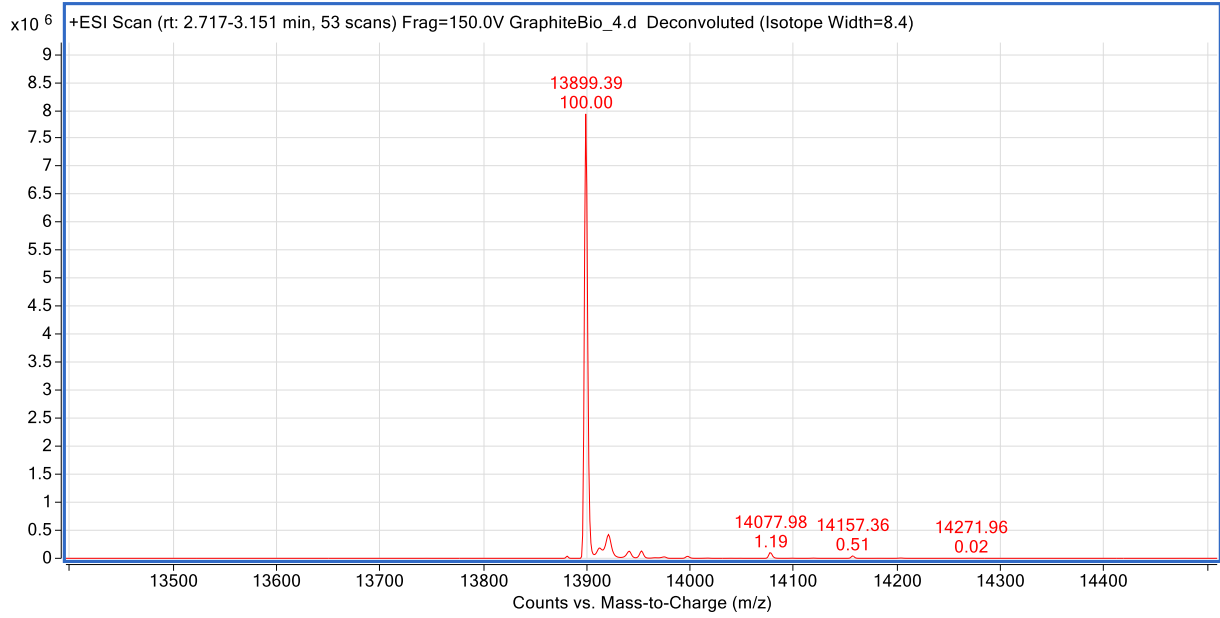
Summary of data

Tube Label	Sample Name	Intact Mass (Da)	
		Measured	Expected
3	GraphiteBio_3	8705.58	8550.79
4	GraphiteBio_4	13899.39	13896.58
5	GraphiteBio_5	8780.91	8762.01
6	GraphiteBio_6	8349.28; 8532.20	8646.99

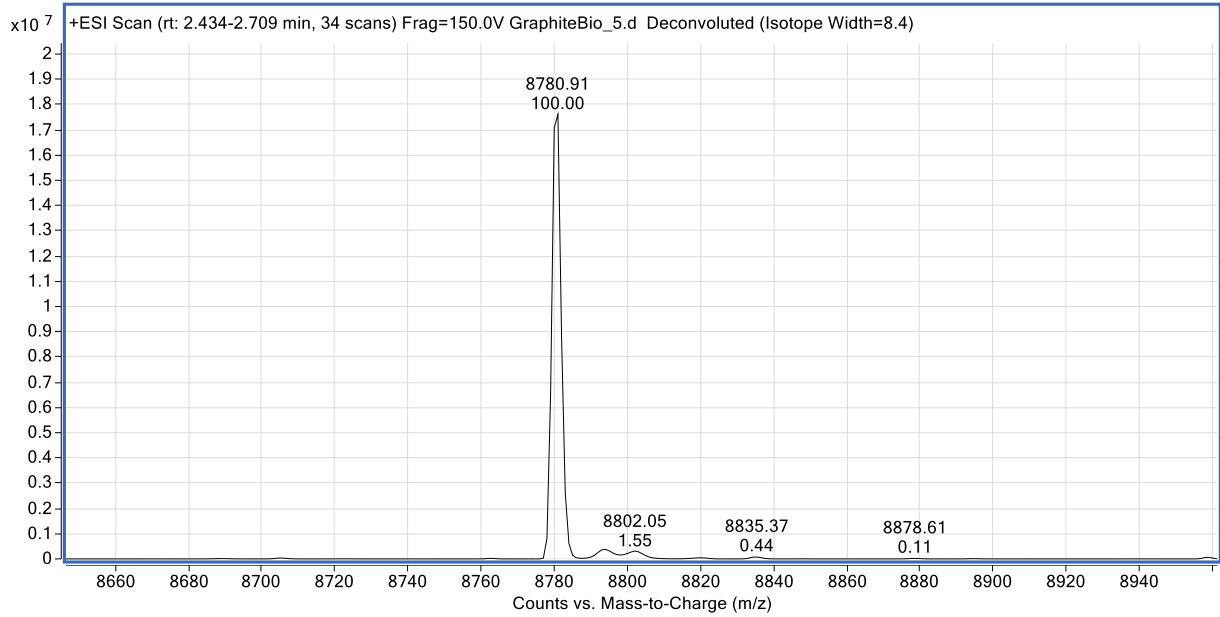
Measured Intact Mass for GraphiteBio_3



Measured Intact Mass for GraphiteBio_4



Measured Intact Mass for GraphiteBio_5



Measured Intact Mass for GraphiteBio_6

