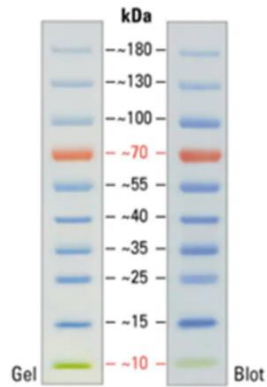


Supporting information

S6 Raw images of the original uncropped and unadjusted western blot images for HepG2 cells treated with a combination of 400 µg/mL CGEtOAc and 4 µM sorafenib for a 24-h incubation period.

PageRuler™ Prestained Protein Ladder,
10 to 180 kDa #26616



BIO-HELIX - PMB01-0500 / PM001-0500 Blu10 Plus Prestained
Protein Ladder / BLUtra Prestained Protein Ladder
(6.5 to 270 kDa)

