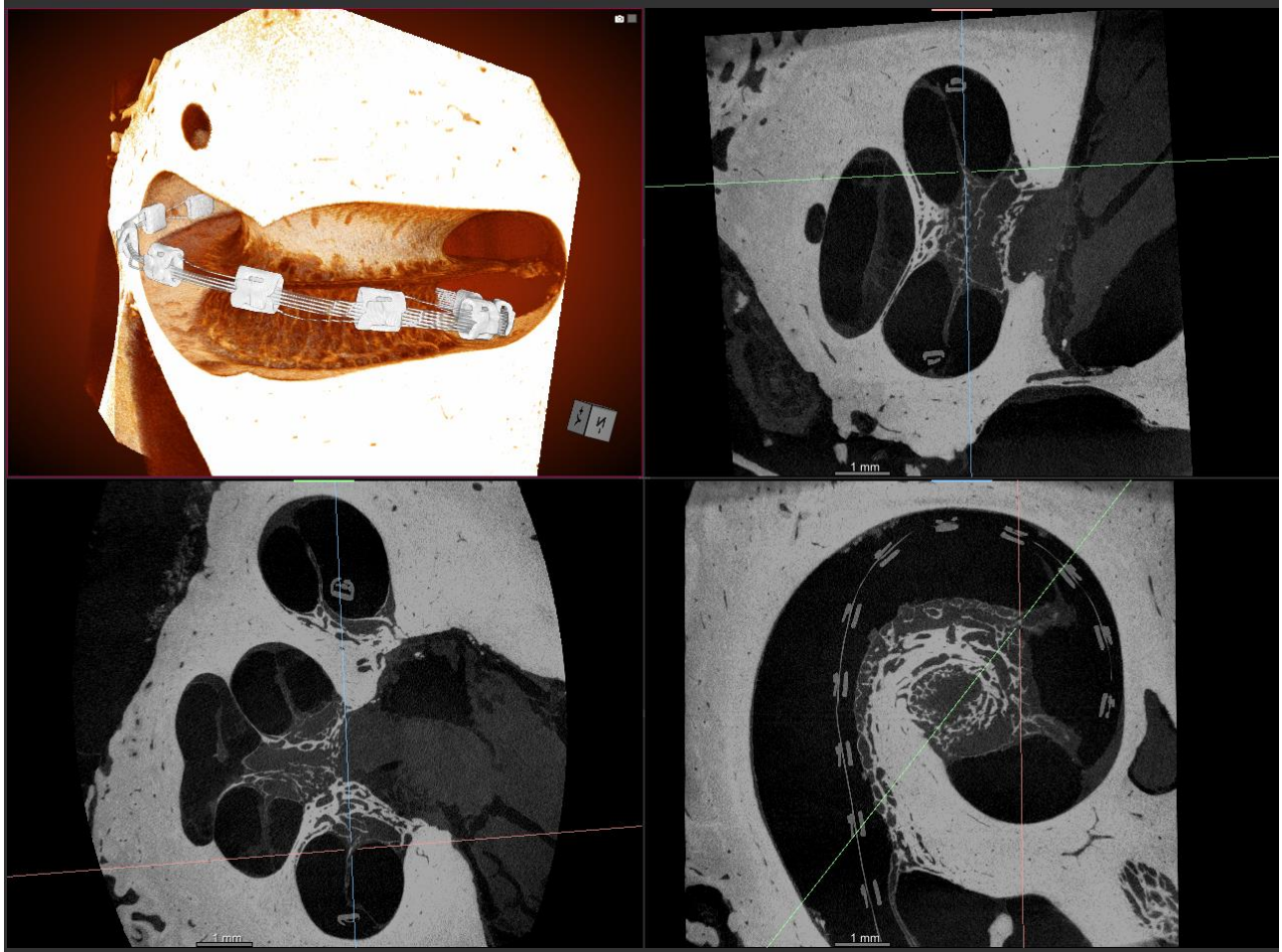
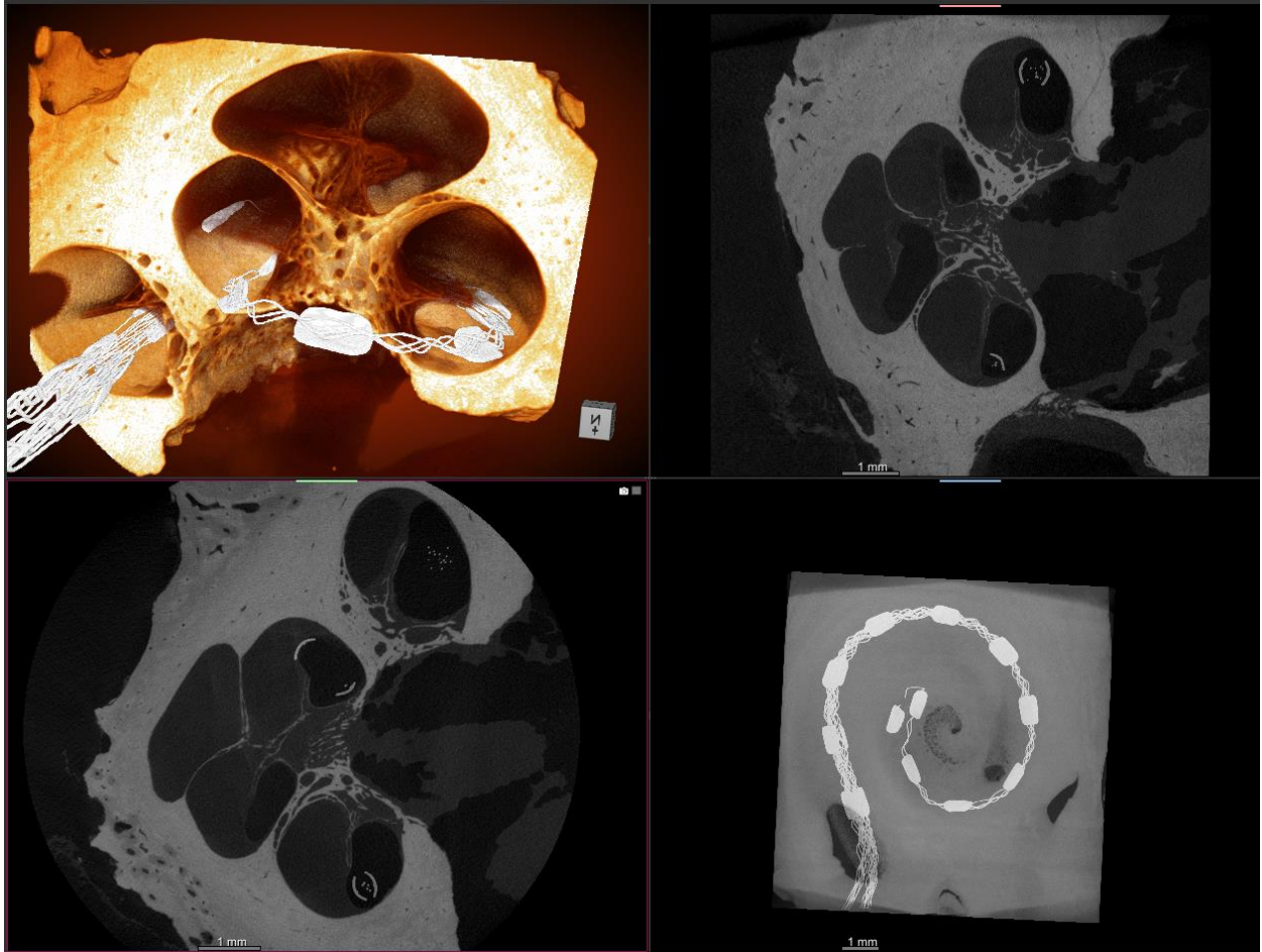


# Manual



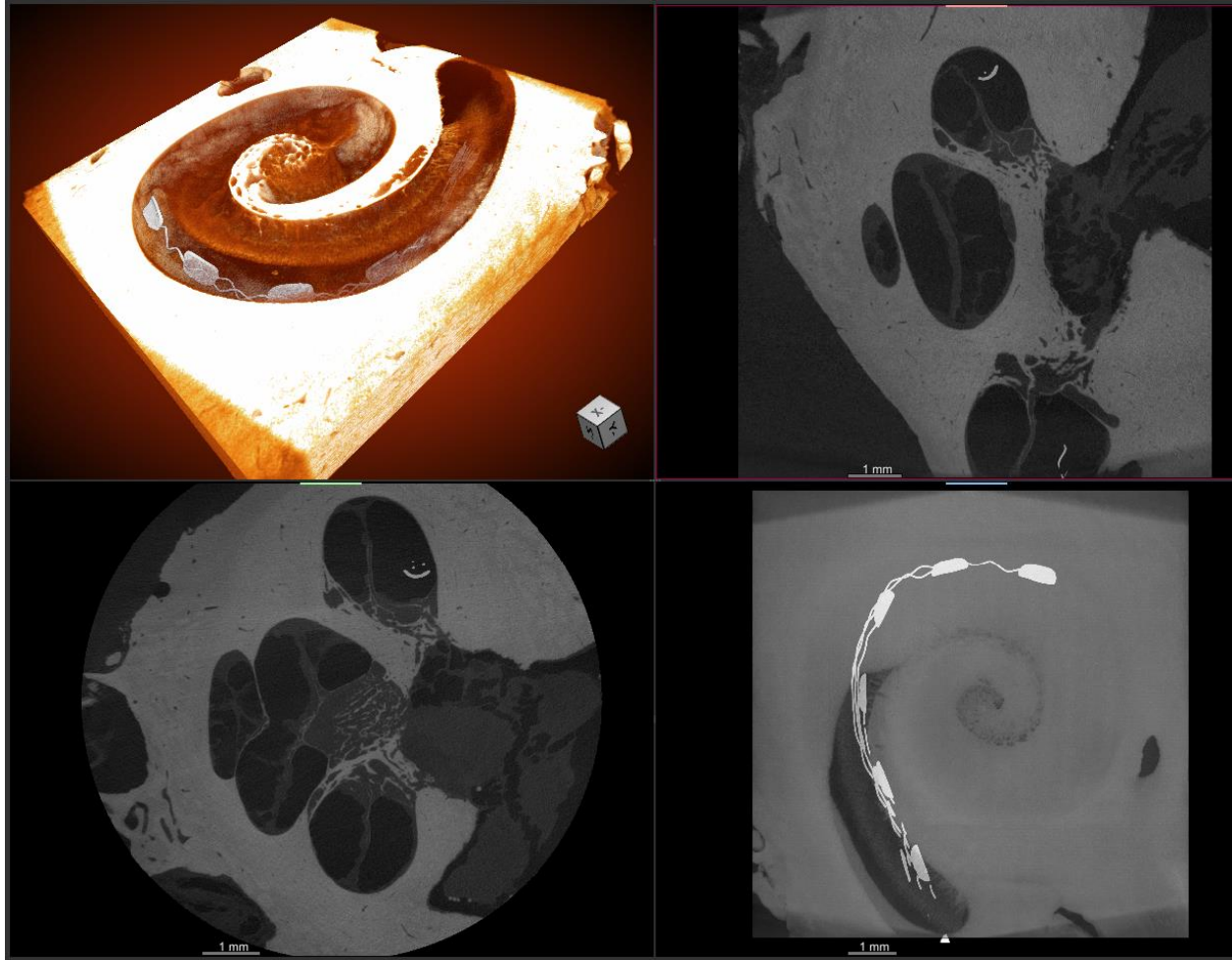
Scala media translocation

# Manual



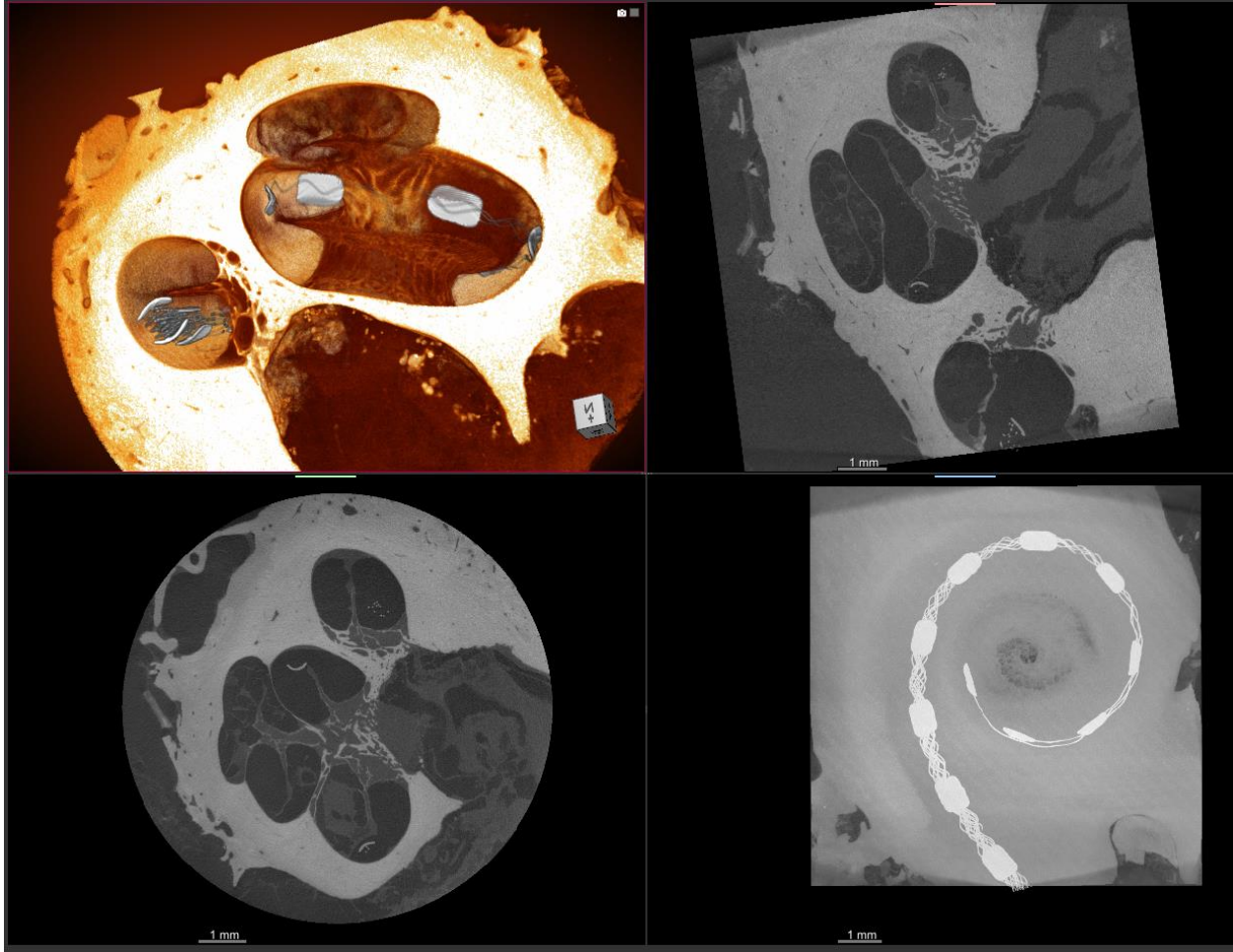
**Scala tympani insertion and tip fold over**

# Manual



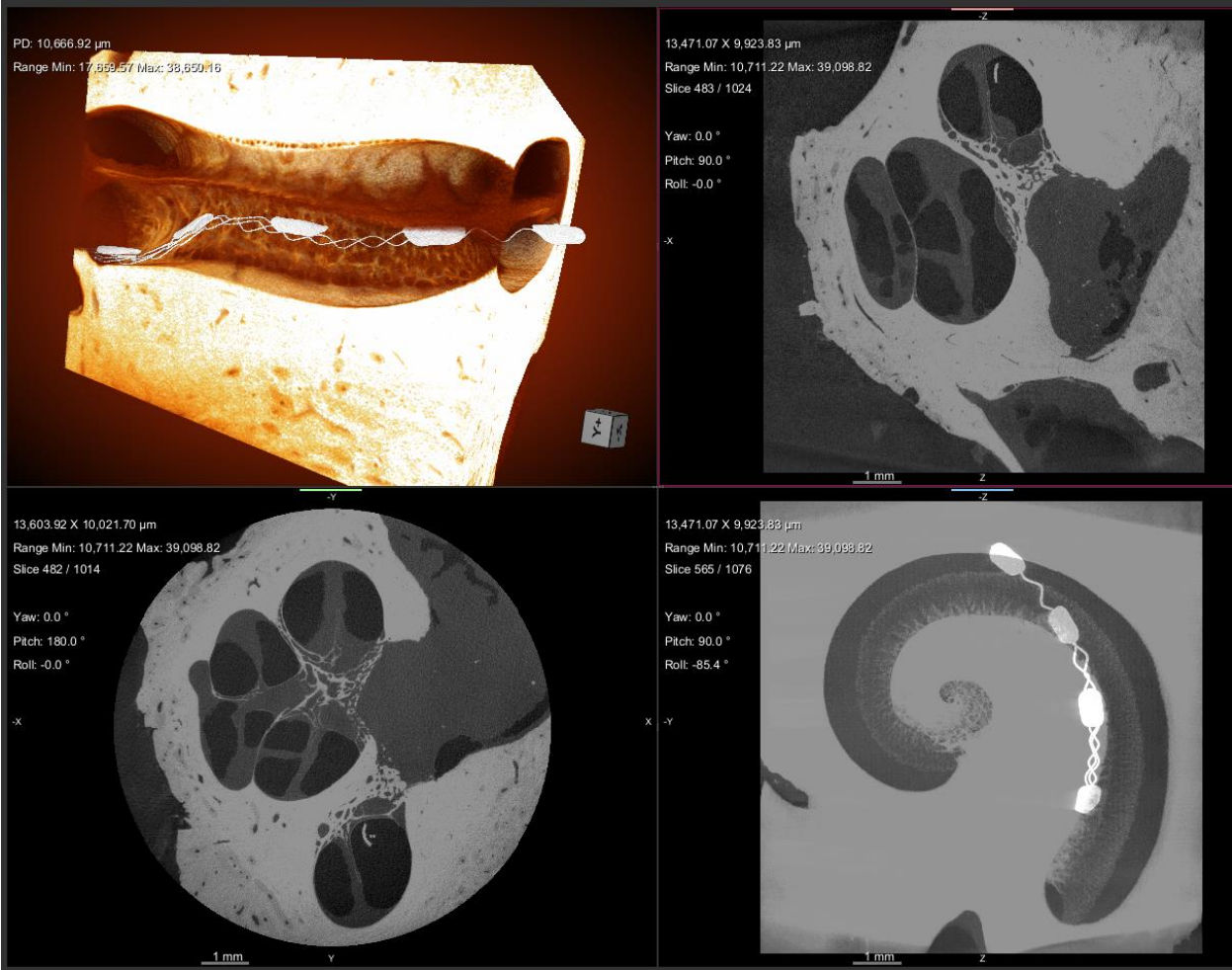
**Scala tympani insertion**

# Manual



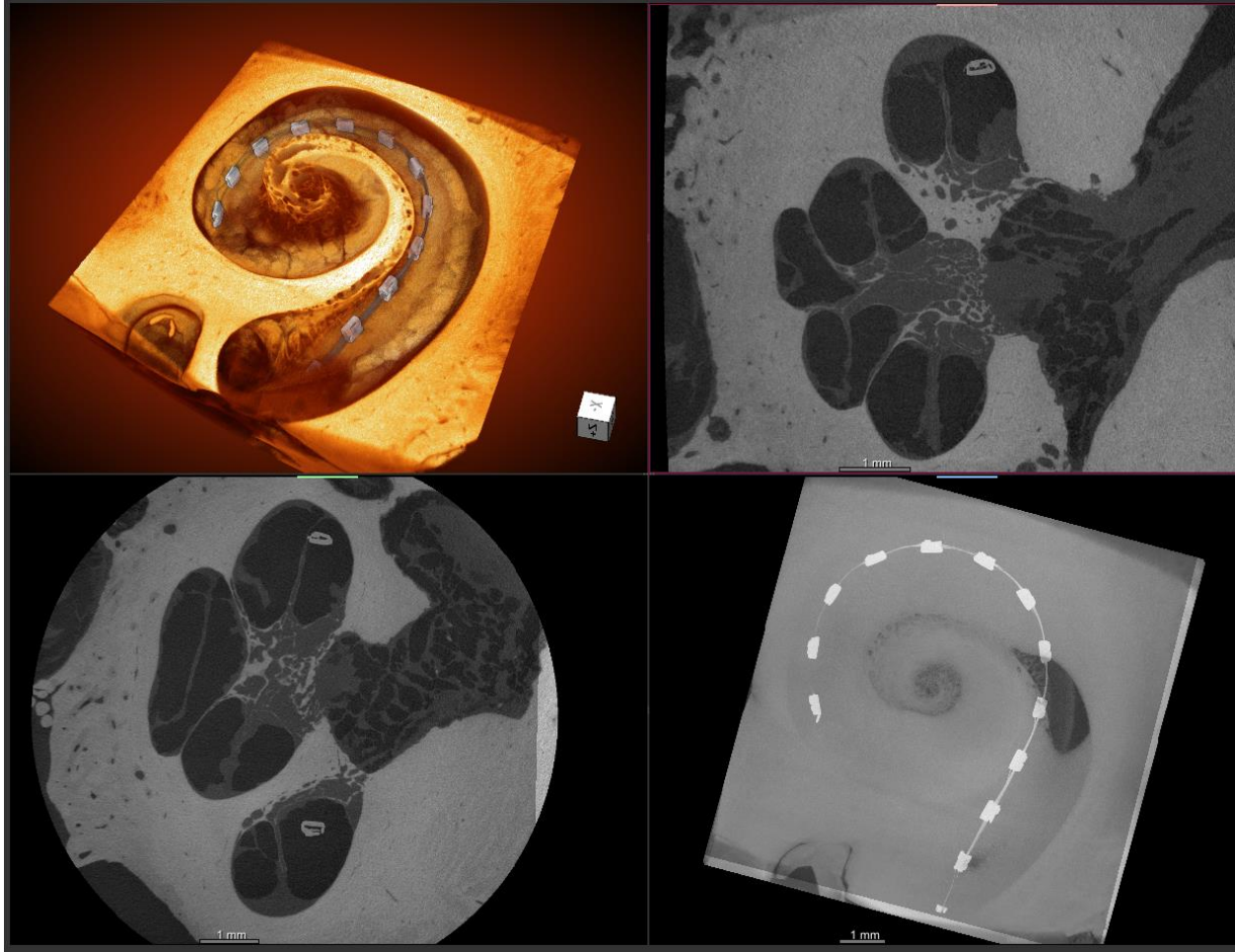
**Scala vestibuli translocation**

# Manual



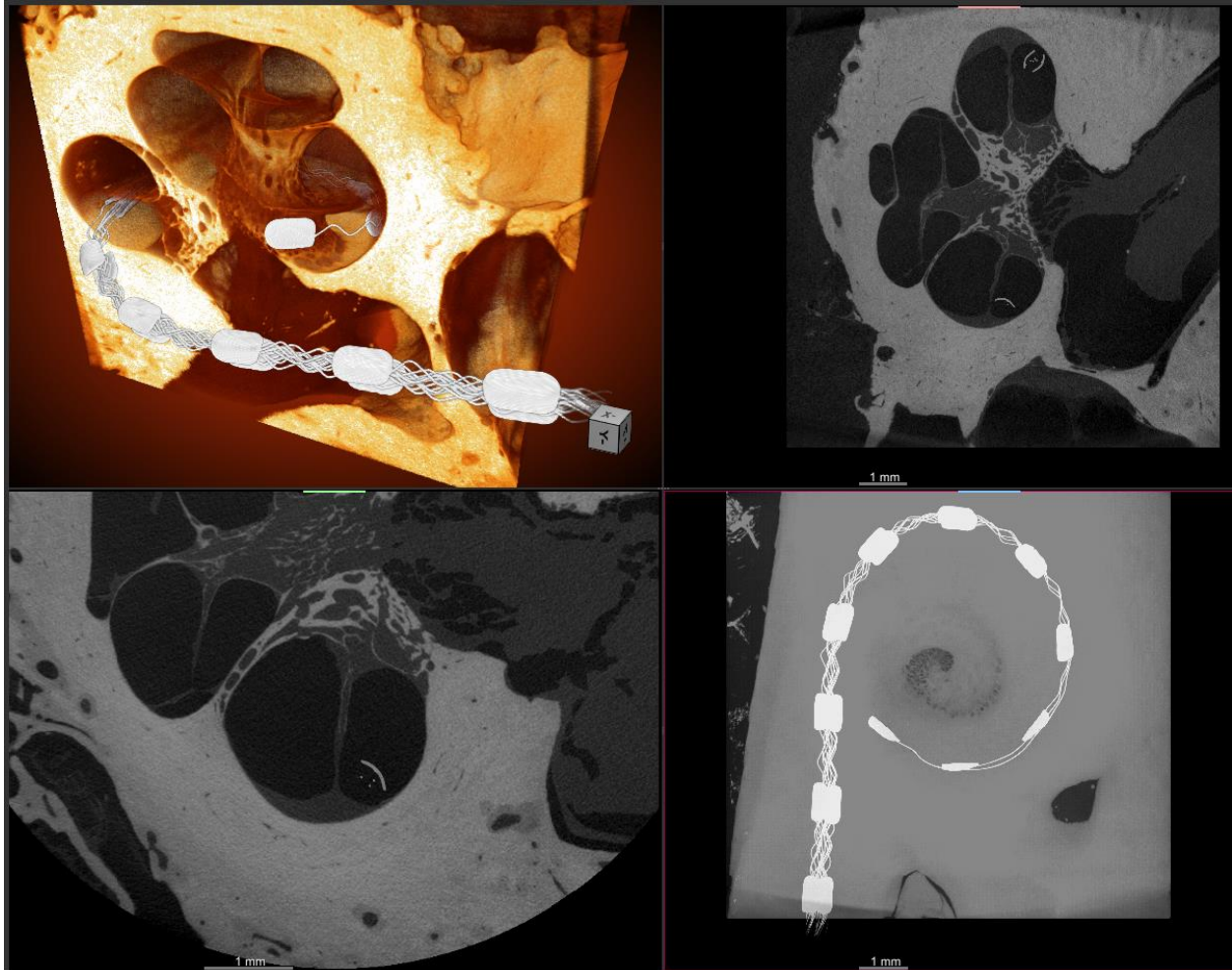
Scala tympani insertion

# Manual



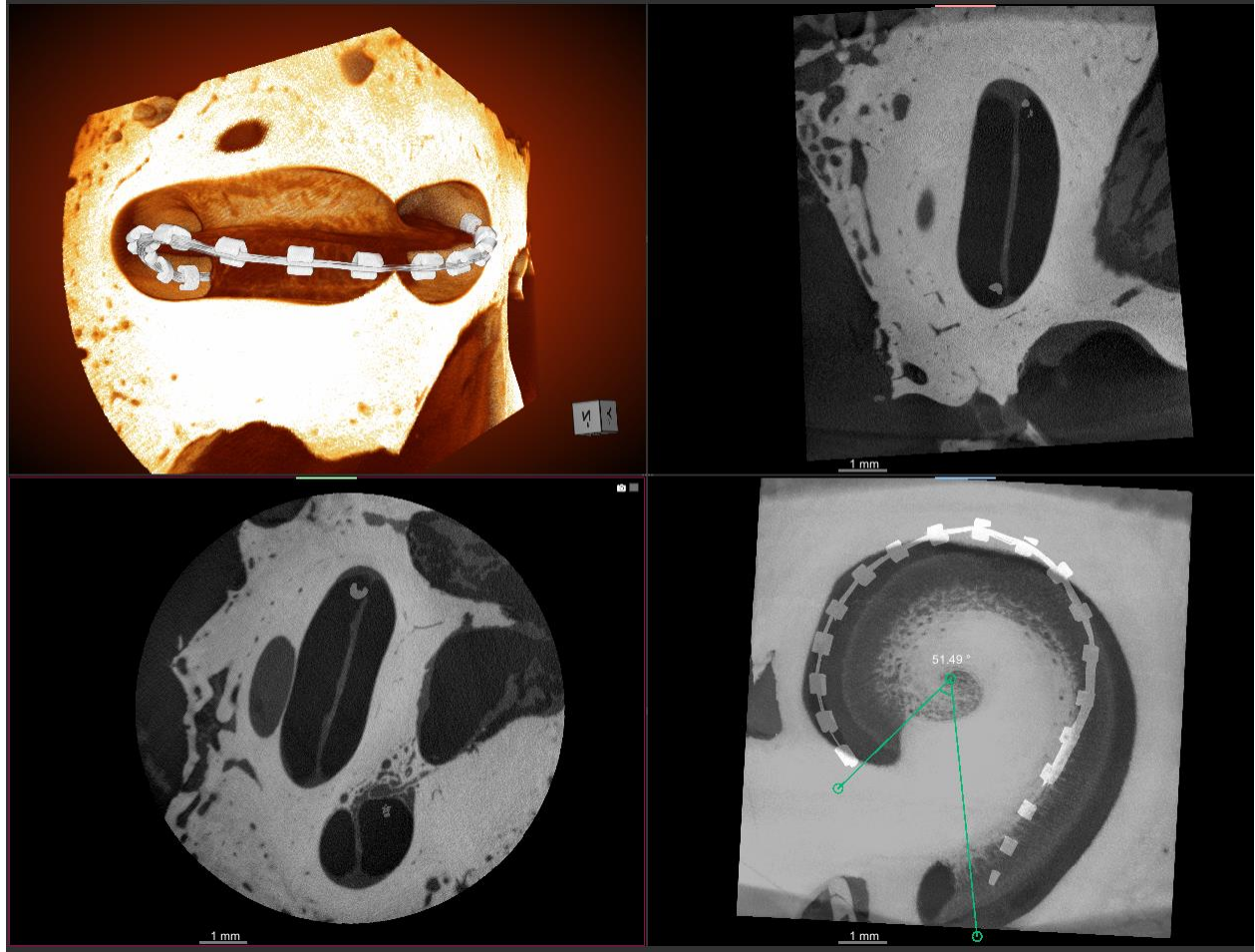
**Scala tympani insertion with OSL fracture**

# Manual



**Scala tympani insertion**

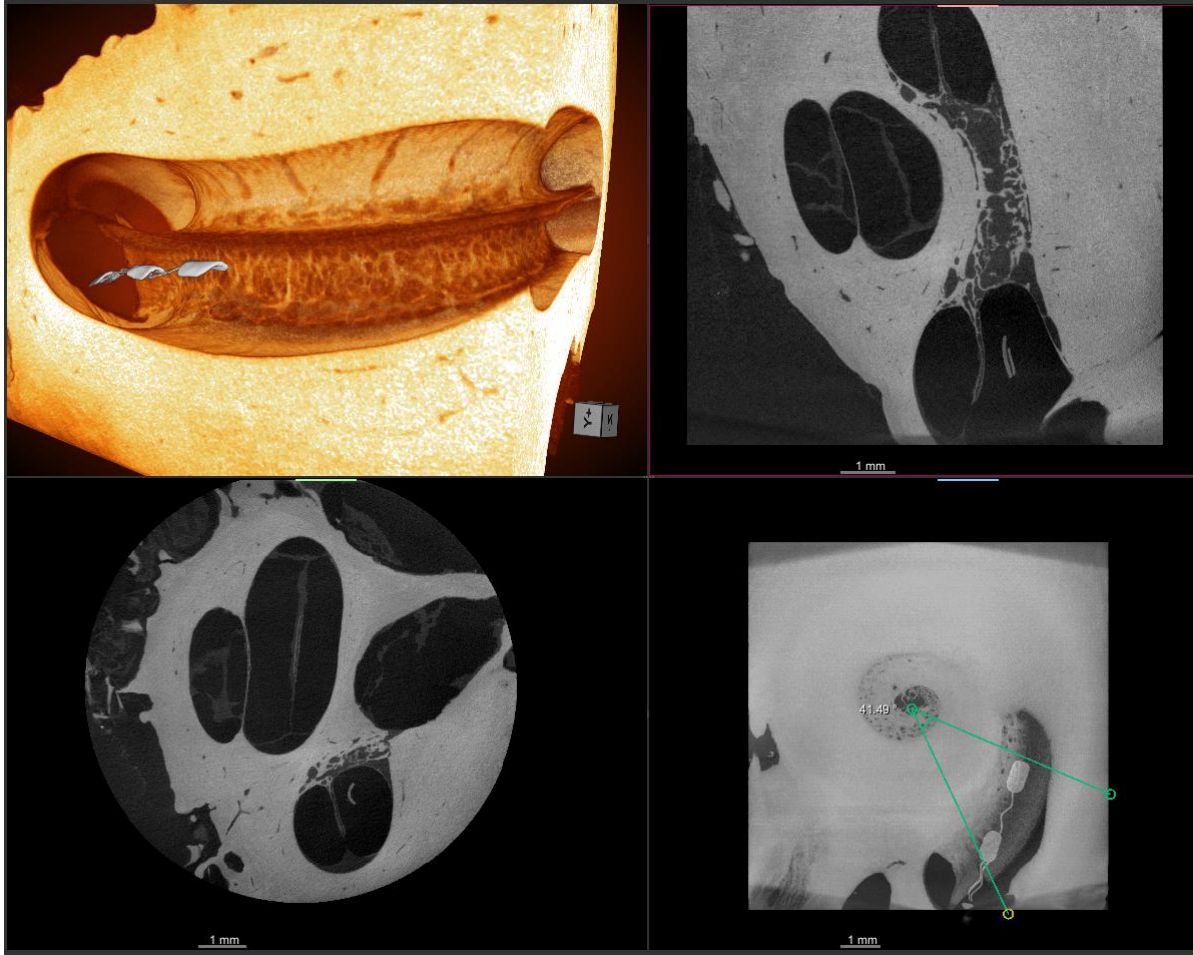
# Manual



**Scala media translocation**

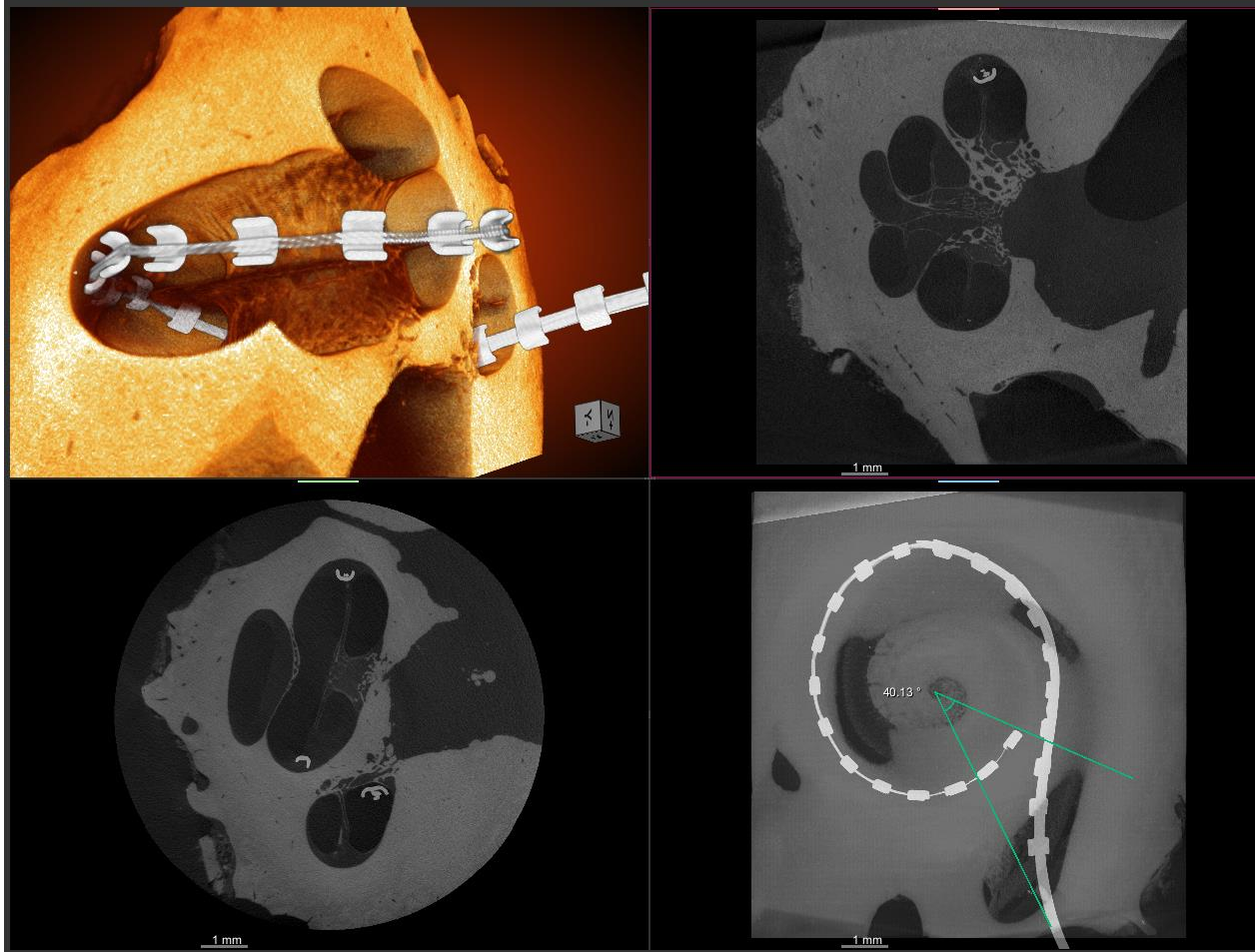


# Manual



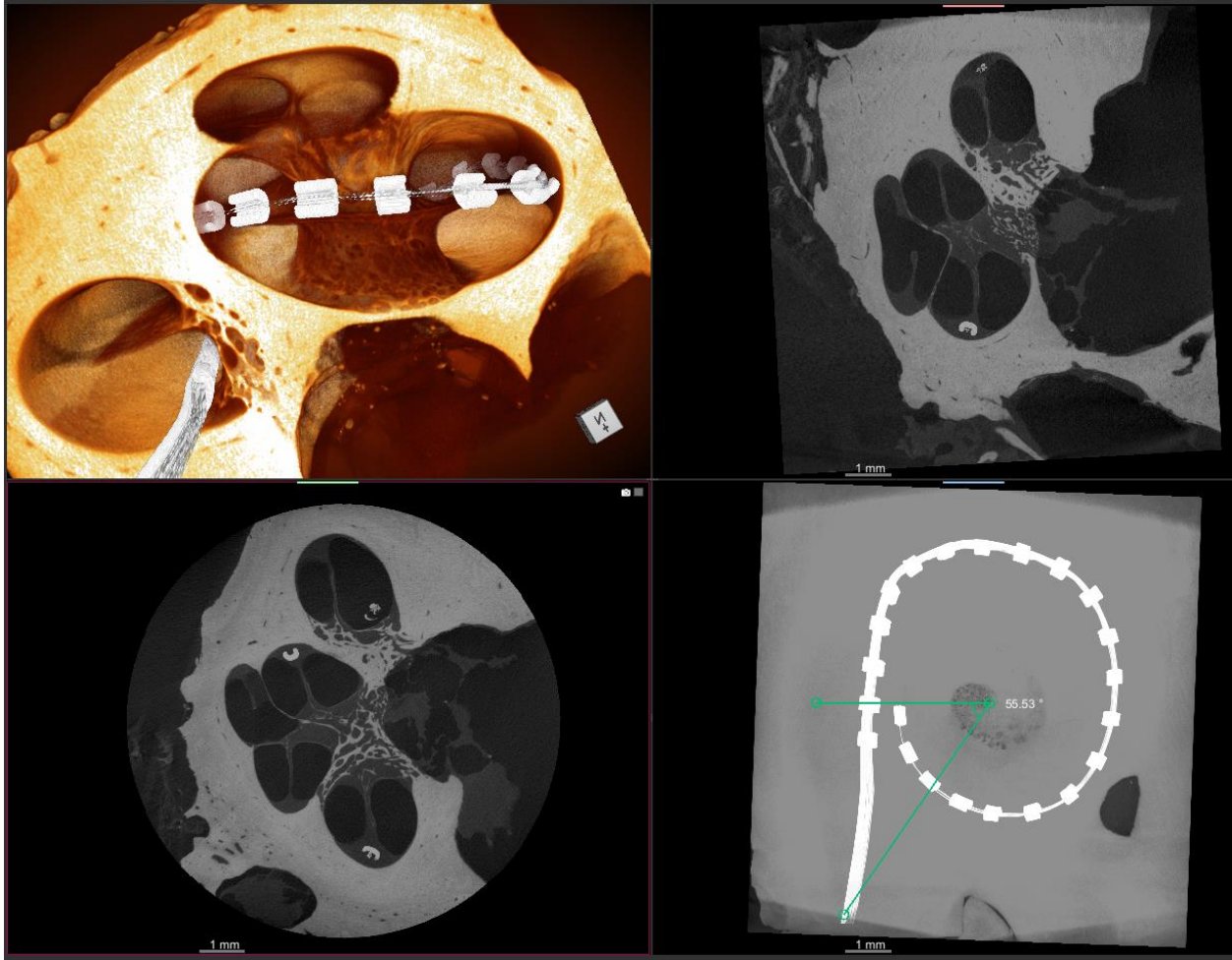
**Scala tympani insertion with OSL fracture**

# Manual



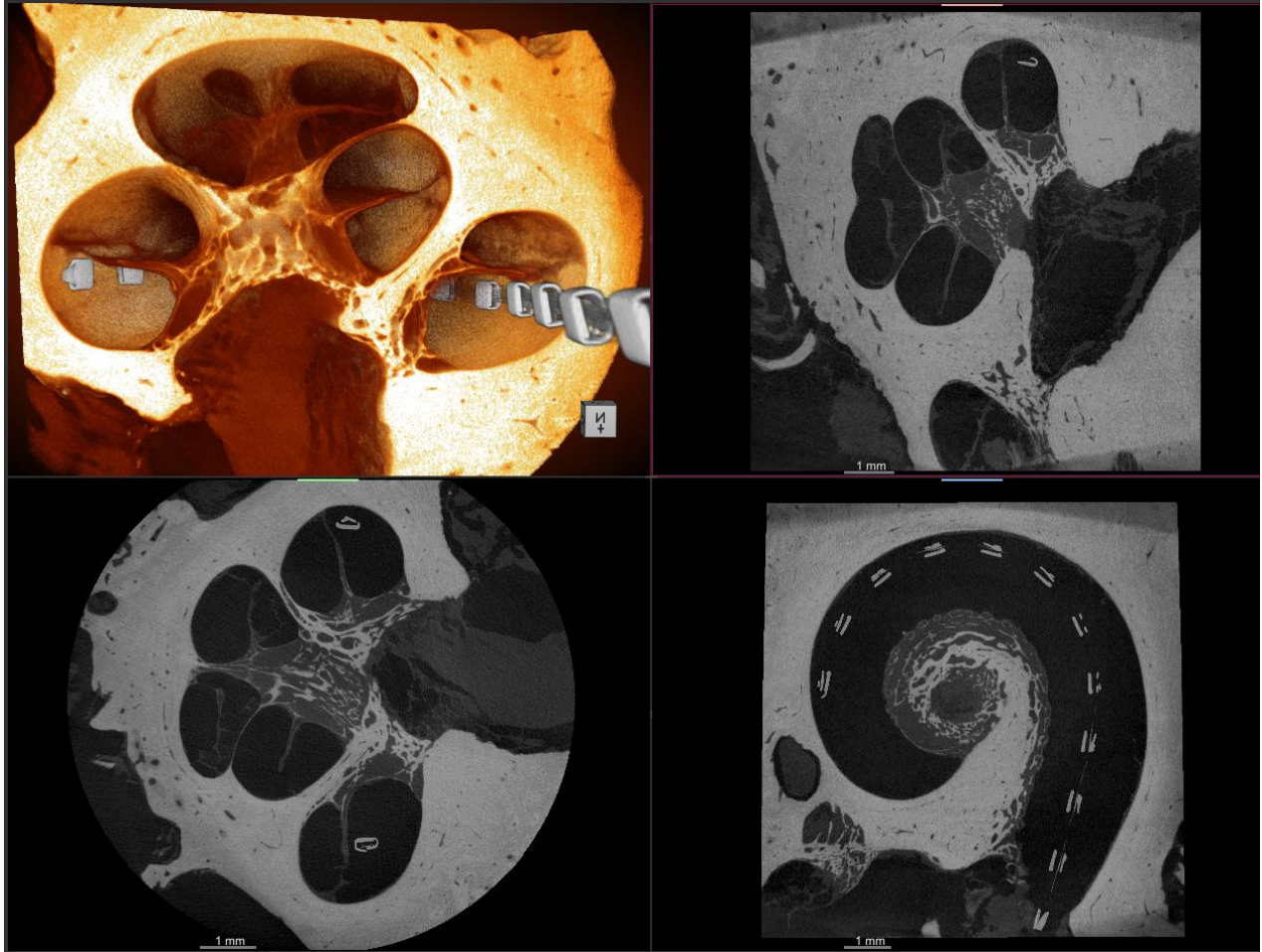
**Scala media translocation with OSL fracture**

# Manual



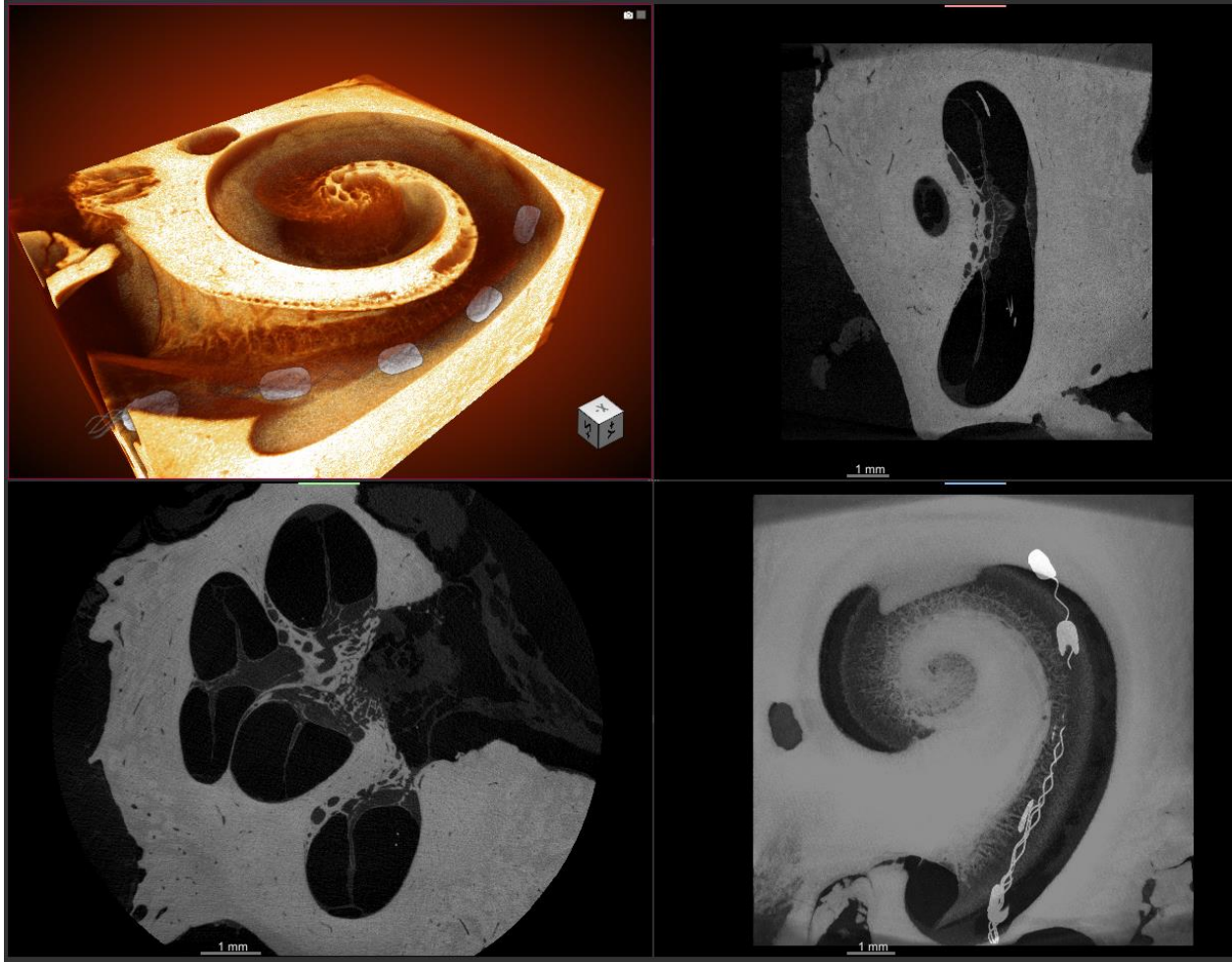
**Scala media translocation**

# Robotics-Assisted



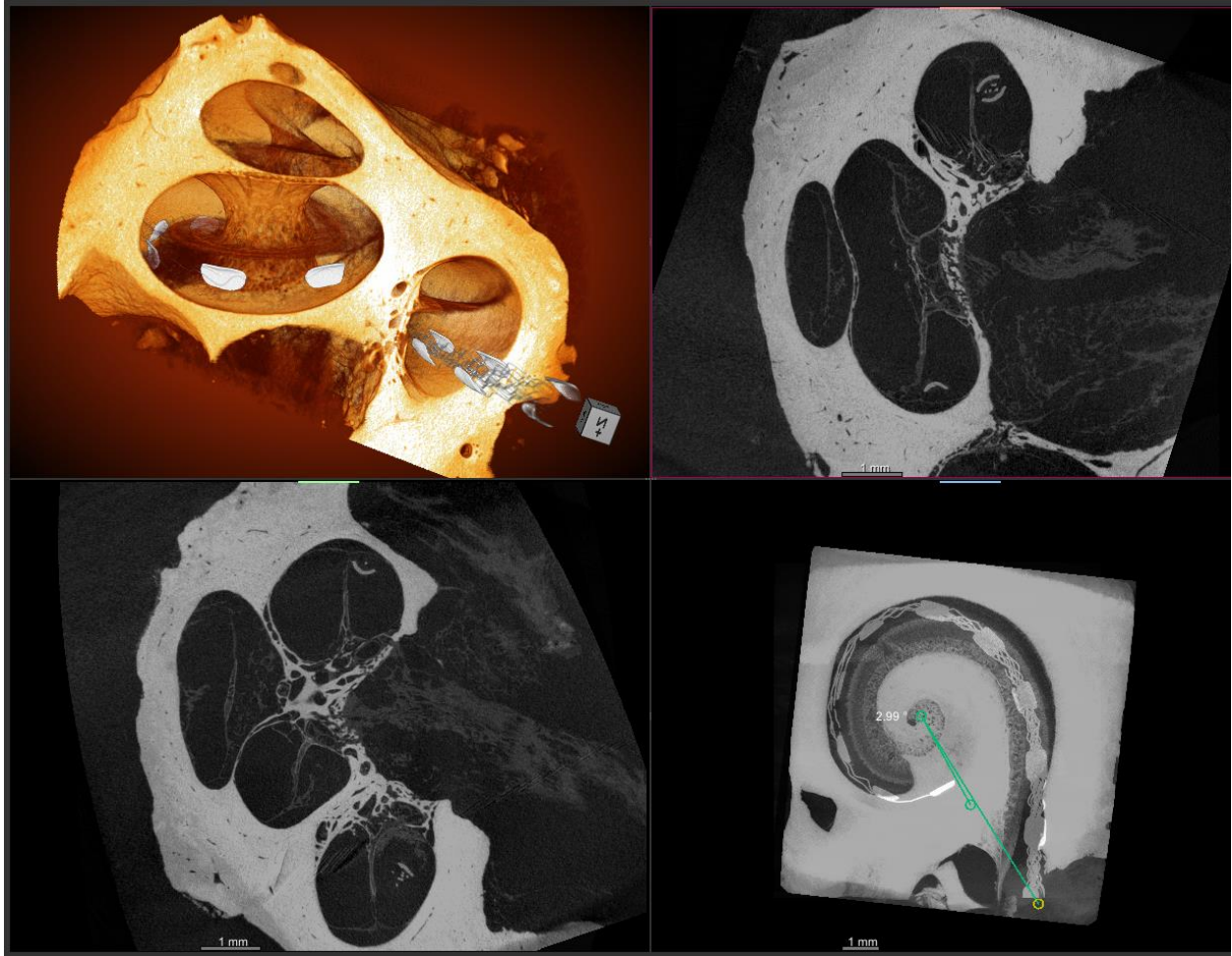
Scala tympani insertion

# Robotics-Assisted



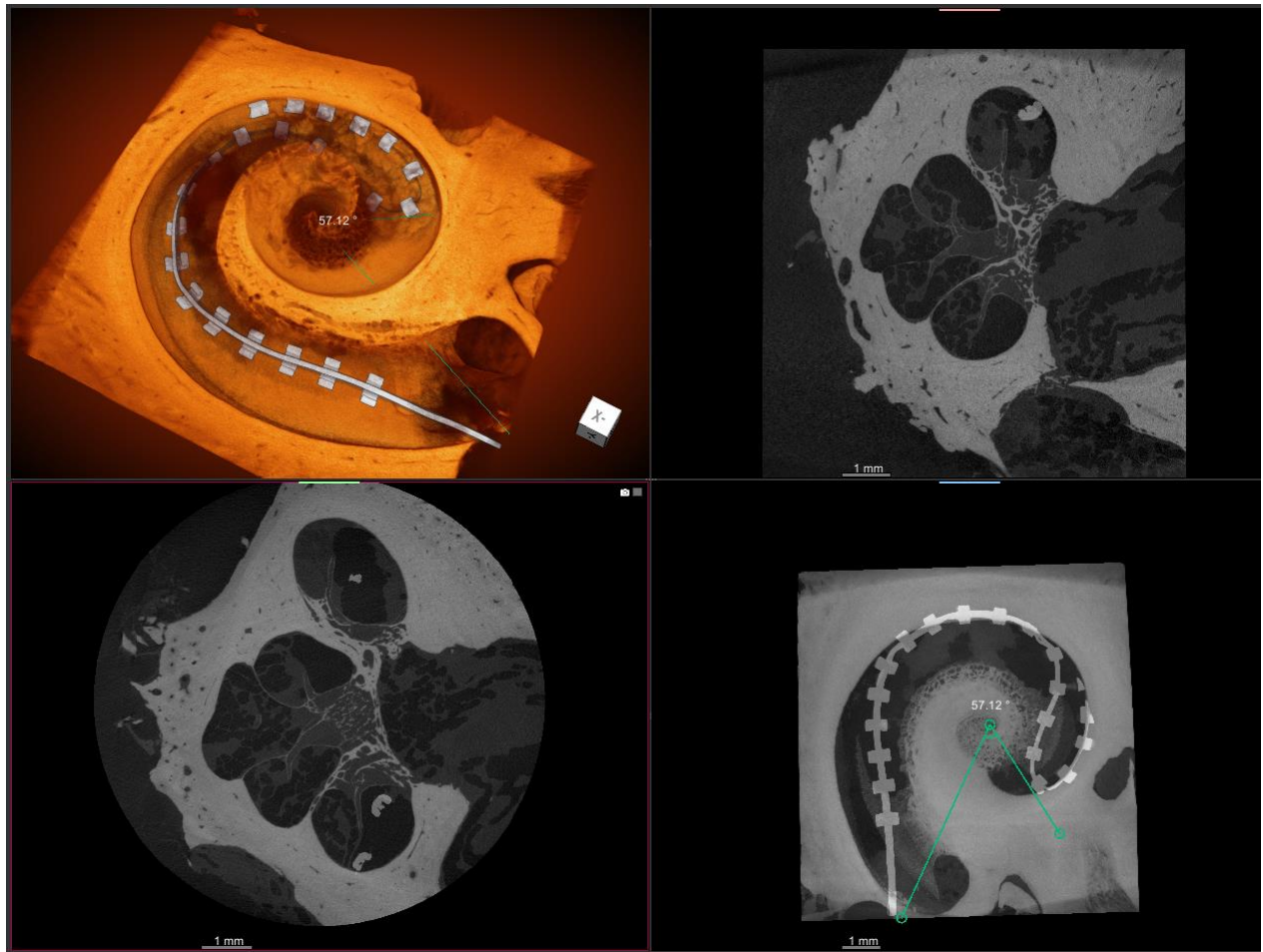
**Scala tympani insertion**

# Robotics-Assisted



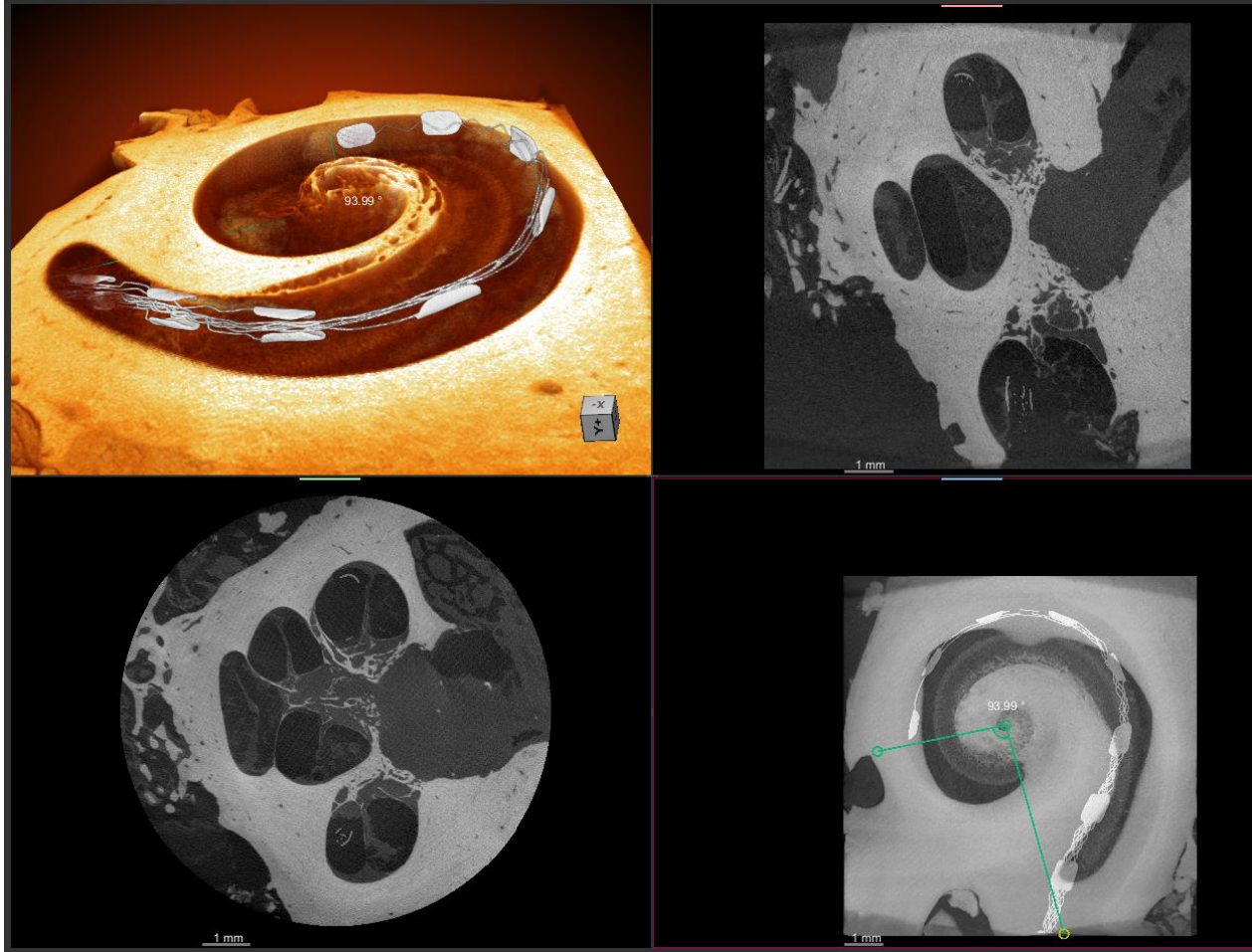
Scala tympani insertion

# Robotics-Assisted



**Scala media translocation and tip fold over**

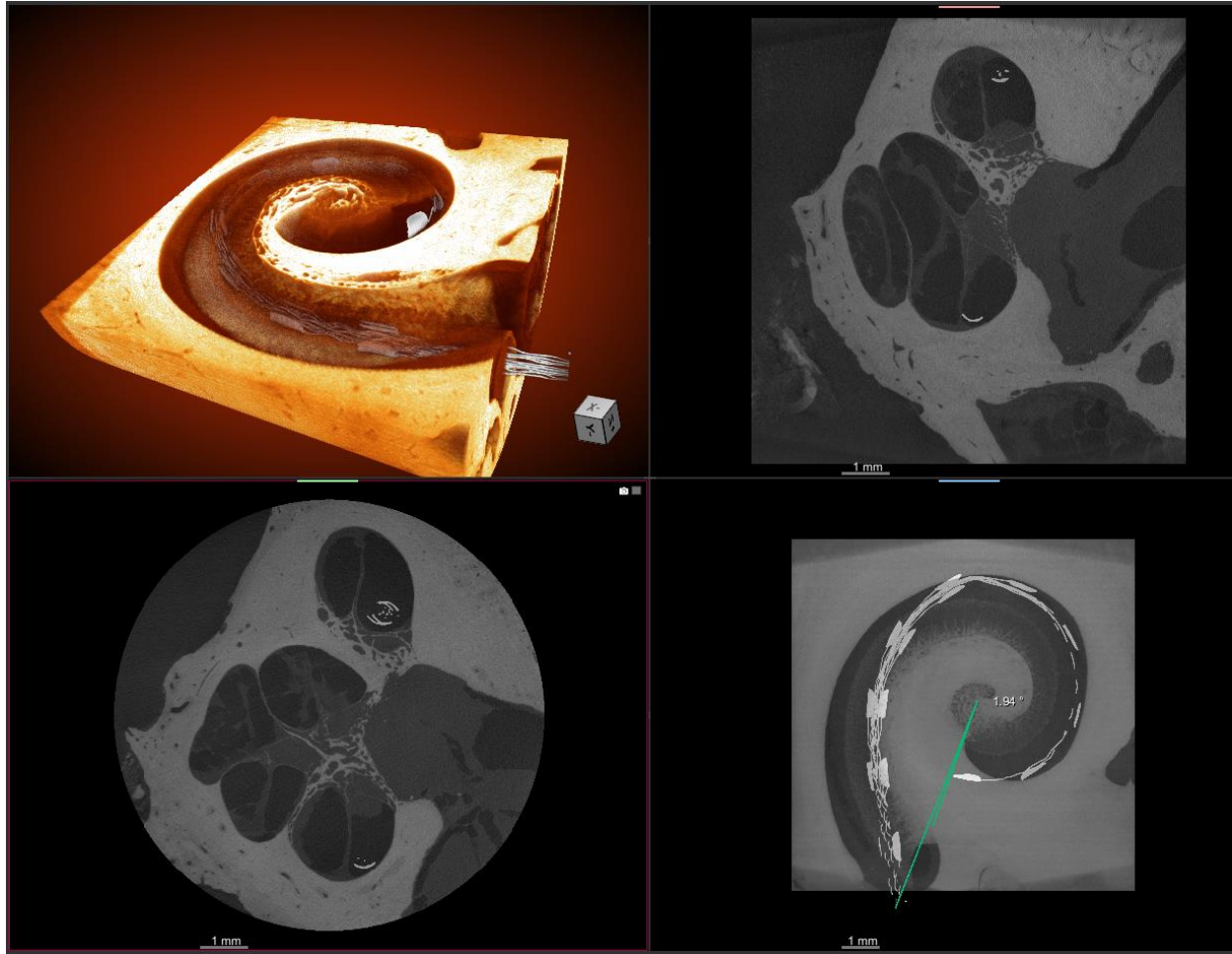
# Robotics-Assisted



Scala vestibuli translocation

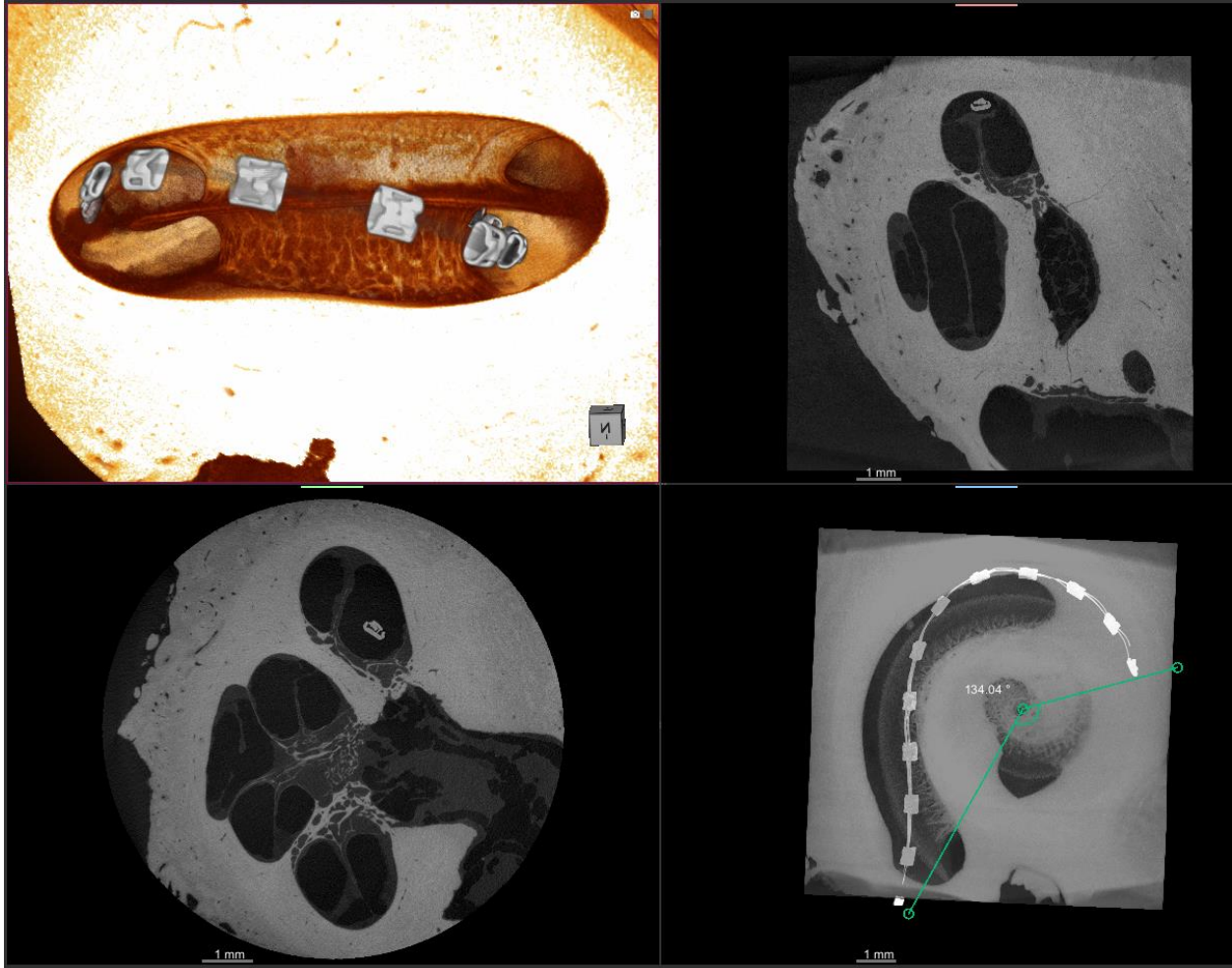


# Robotics-Assisted



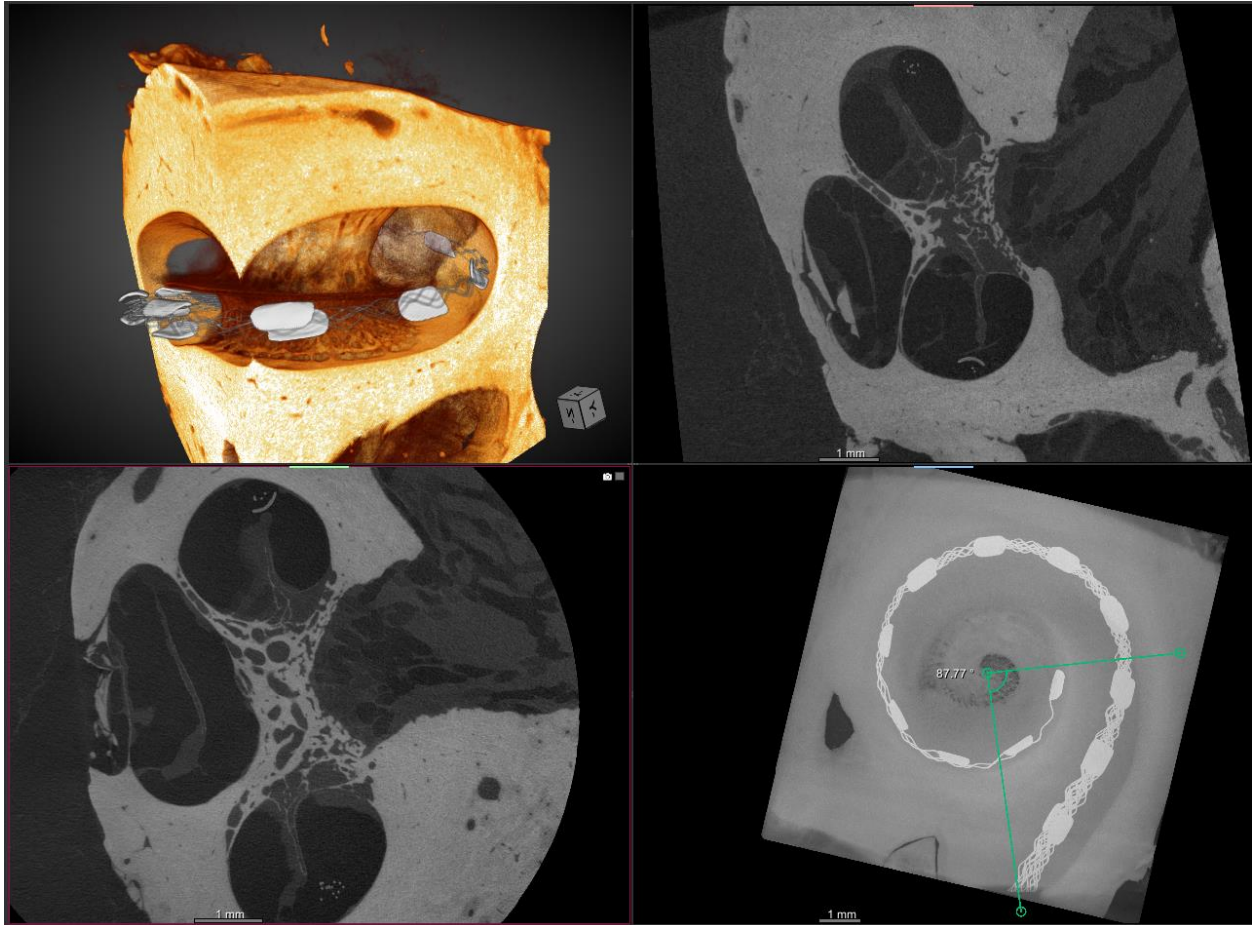
Scala tympani Insertion

# Robotics-Assisted



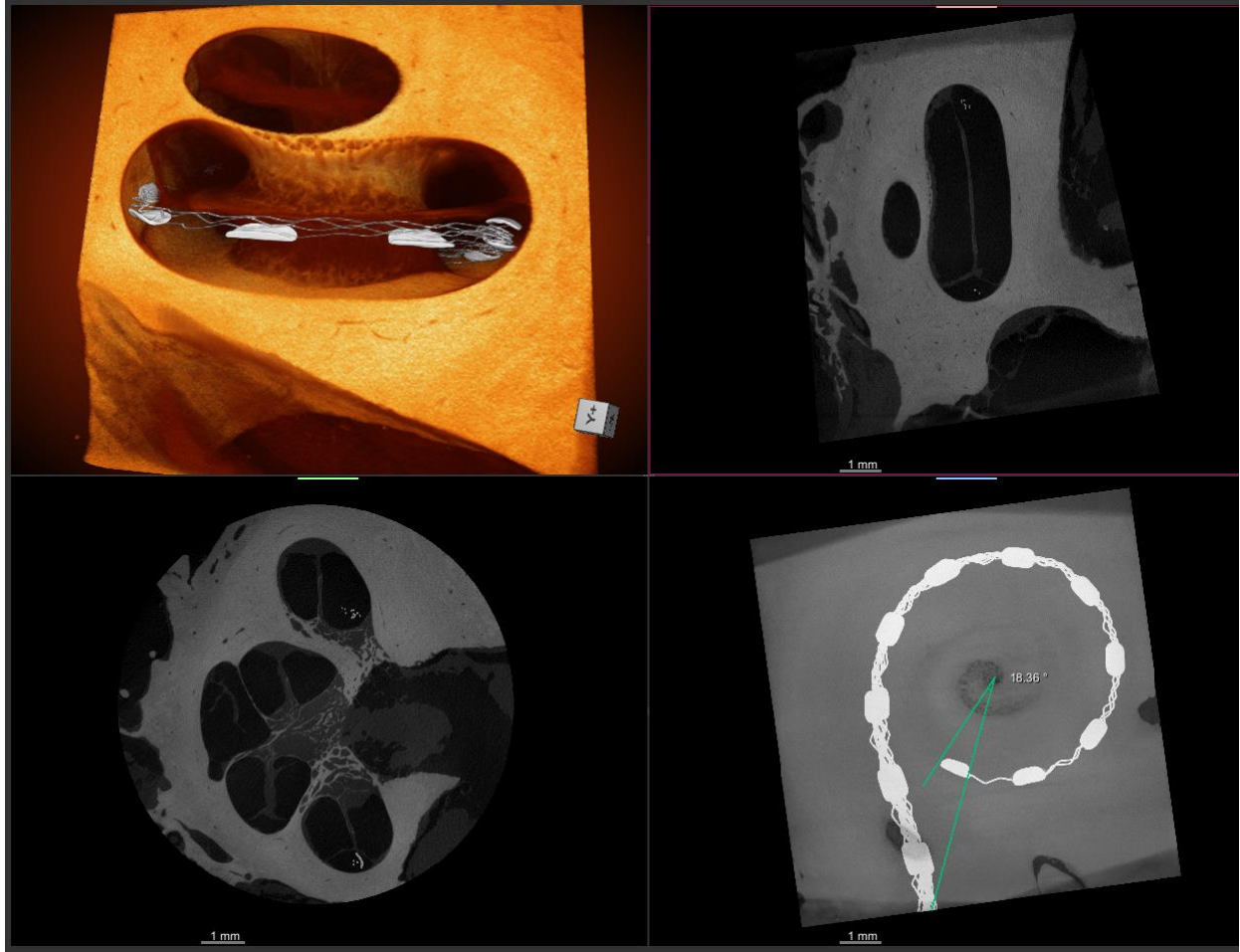
Scala media translocation

# Robotics-Assisted



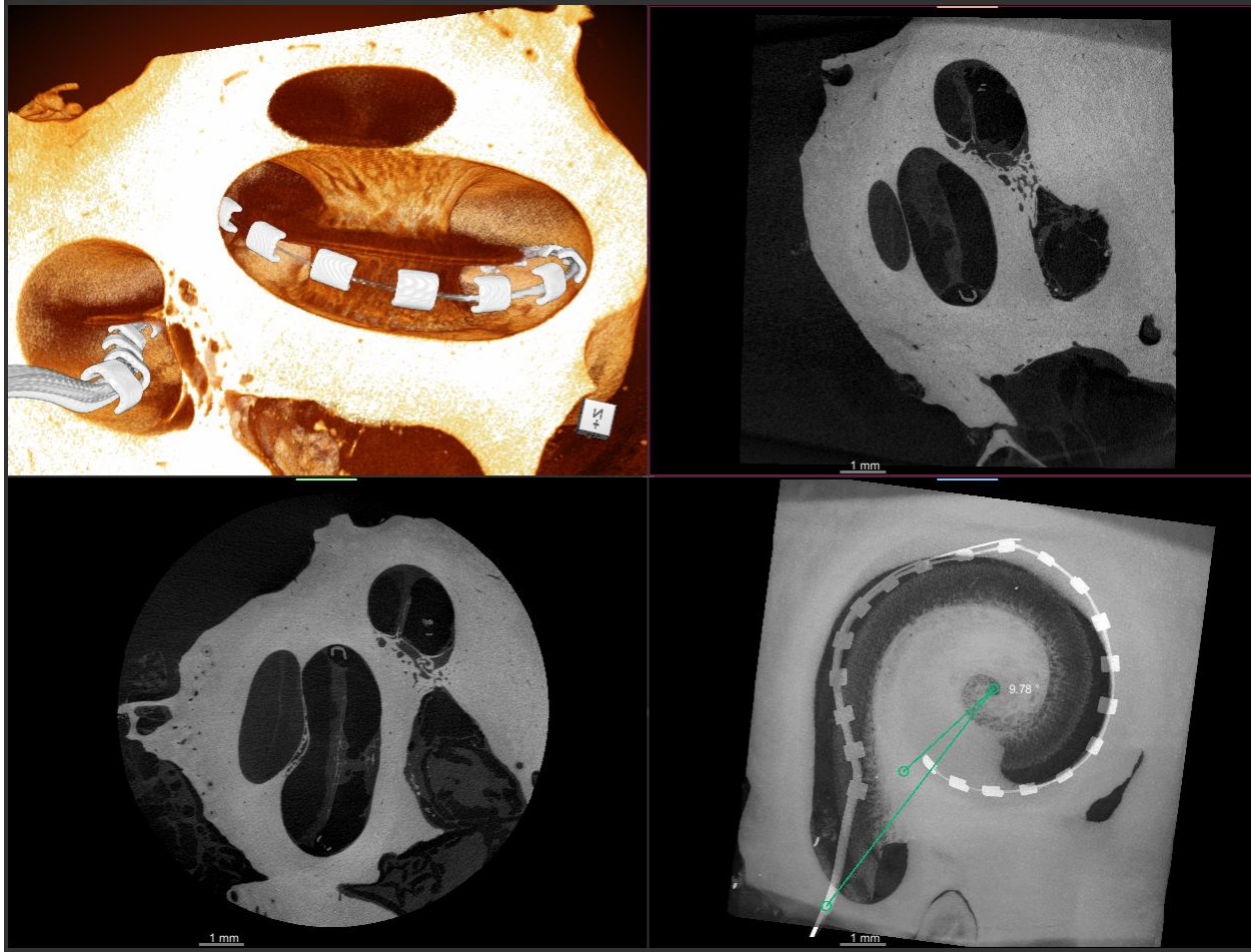
Scala media translocation

# Robotics-Assisted



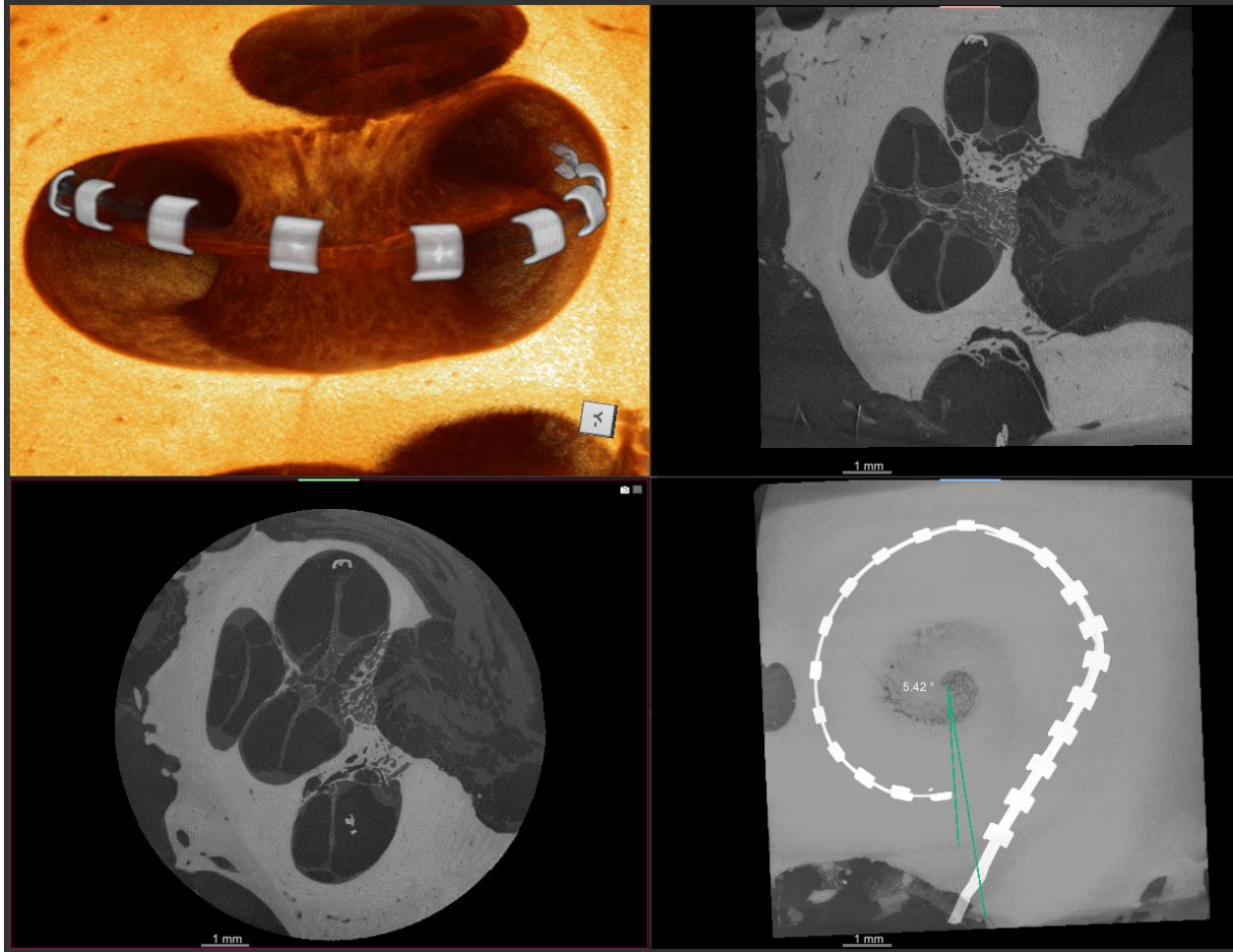
Scala media translocation

# Robotics-Assisted



Scala media translocation

# Robotics-Assisted



Scala media translocation