

## Supplemental Online Content

Gallo RJ, Shieh L, Smith M, et al. Effectiveness of an artificial intelligence–enabled intervention for detecting clinical deterioration. *JAMA Intern Med*. Published online March 25, 2024. doi:10.1001/jamainternmed.2024.0084

### **eMethods**

**eFigure 1.** Count of Patients Across Maximum EDI Scores

**eFigure 2.** Sensitivity of the Primary Outcome to Bandwidth Choice

**eFigure 3.** Rates of the Secondary Outcome Across EDI Scores

**eFigure 4.** Sensitivity of the Secondary Outcome to Bandwidth Choice

**eFigure 5.** Documentation of Huddle by Score

**eFigure 6.** Age (A), Elixhauser Comorbidity Index (B), and Time of Maximum EDI Score Since Admission (C) by EDI Score

**eFigure 7.** Time from First EDI Score  $\geq 65.0$  to Maximum EDI Score

**eFigure 8.** Placebo Test for the Primary Outcome

**eTable.** Admission Diagnosis Categories

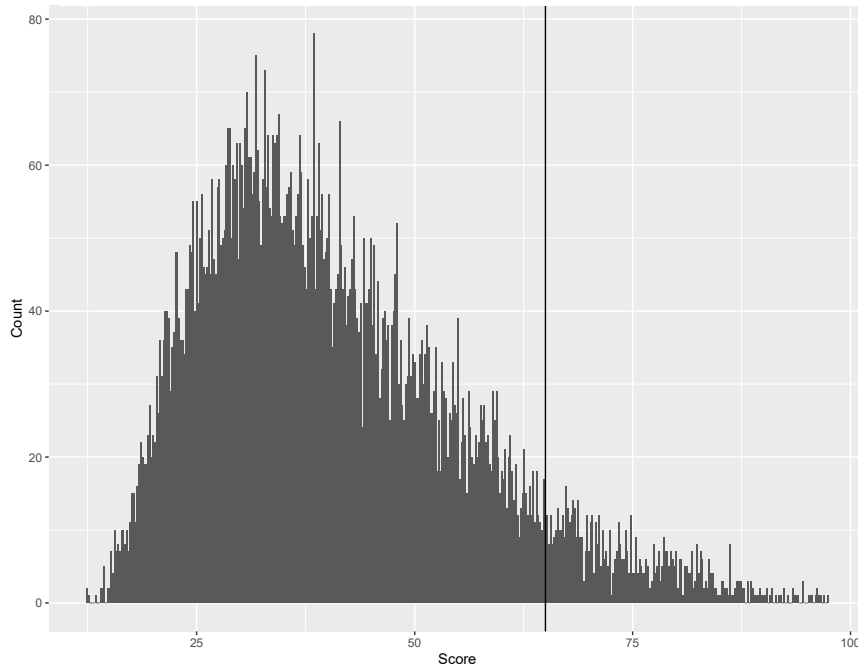
This supplemental material has been provided by the authors to give readers additional information about their work.

## **eMethods**

### Description of the Intervention:

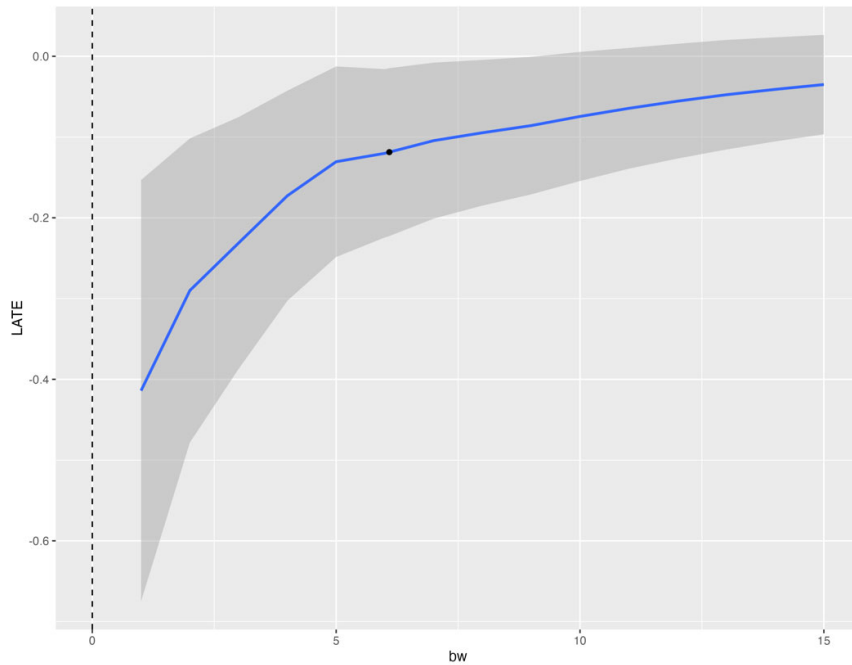
Once a patient's risk score reached 65.0, an alert was sent to the provider and nurse taking care of the patient through the application used by the hospital for clinical communications. Additionally, a best practice alert appeared within the patient's electronic chart, which included prompts to complete a structured huddle. The provider and nurse were instructed to discuss possible reasons for deterioration, with examples given of shock, arrhythmia, aspiration, mental status changes, respiratory failure, and/or other. The team was then prompted to consider specific interventions to prevent decompensation with the following examples: assess aspiration risk/swallow evaluation, new orders, goals-of-care discussion, family meeting, new consult, ICU provider consult, critical care response nurse consult, and/or other.

**eFigure 1. Count of Patients Across Maximum EDI Scores**



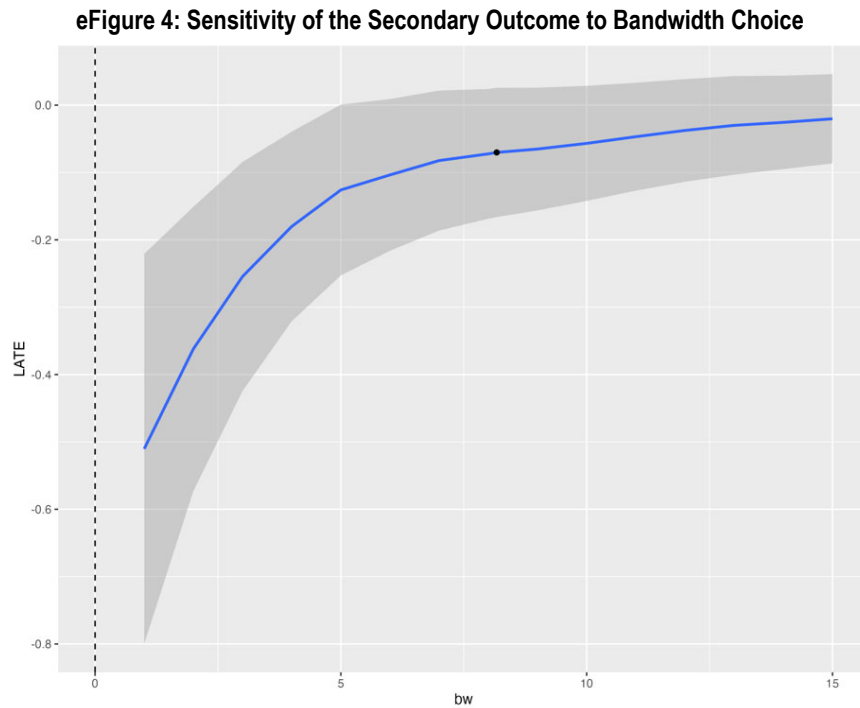
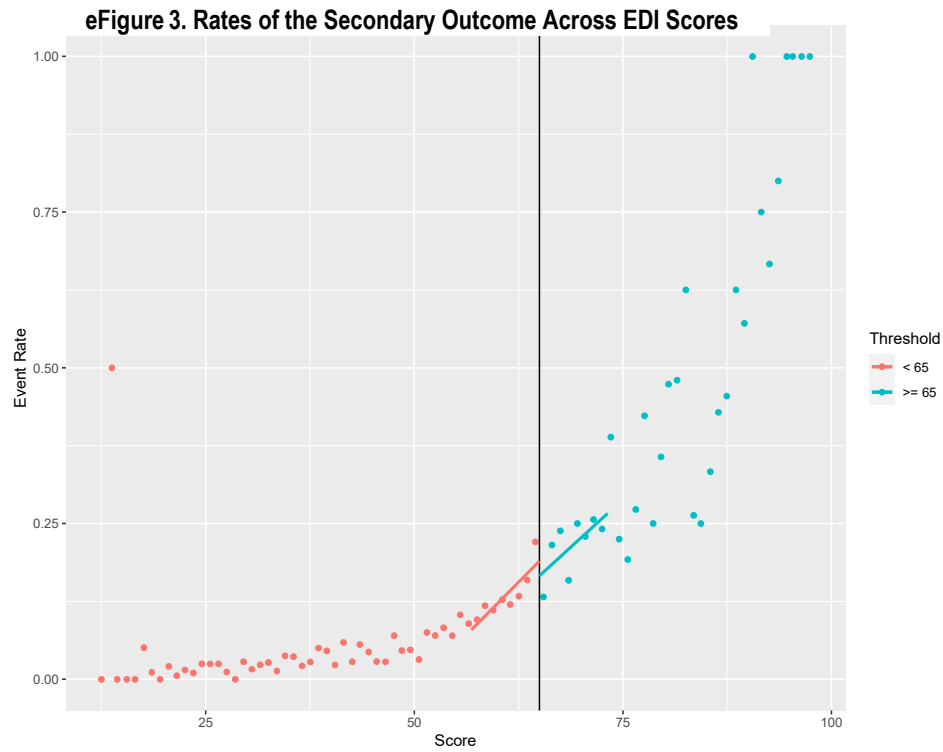
Scores are binned by 0.2 points.

**eFigure 2. Sensitivity of the Primary Outcome to Bandwidth Choice**



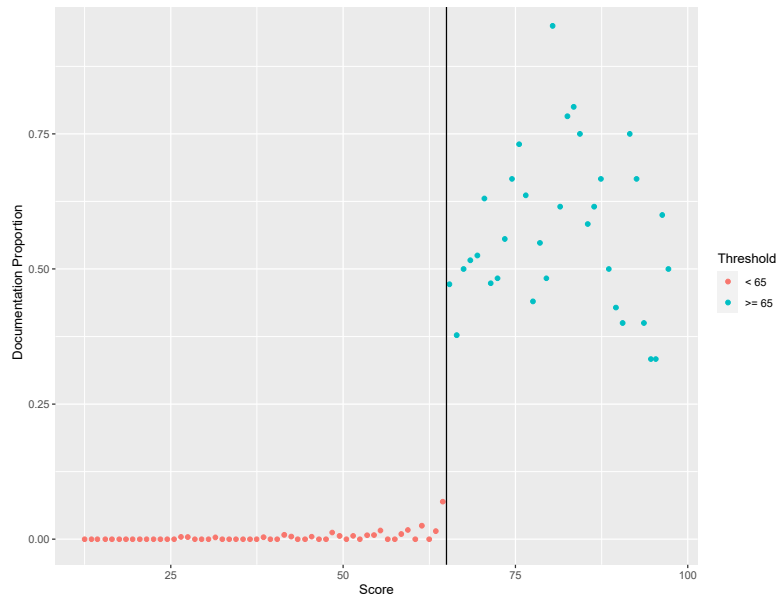
LATE: Local Average Treatment Effect; bw: bandwidth around threshold.

Blue line represents treatment effect estimate (LATE) at a given bandwidth, with gray shaded bounds indicating 95% confidence intervals. Black circle represents the CCT selected bandwidth of 6.09. The treatment effect estimate at that bandwidth was -11.9% (95% CI -22.3 to -1.5;  $p=0.03$ ).

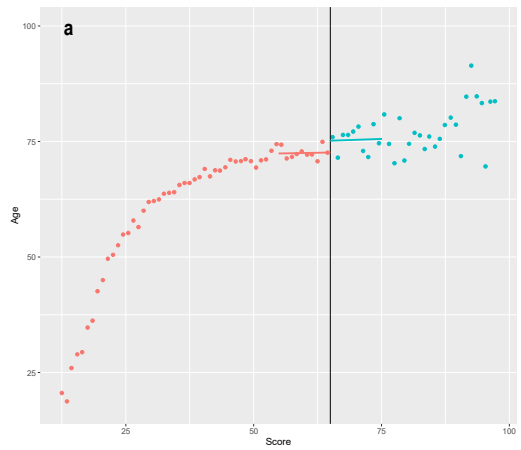


LATE: Local Average Treatment Effect; bw: bandwidth around threshold.  
 Blue line represents treatment effect estimate (LATE) at a given bandwidth, with gray shaded bounds indicating 95% confidence intervals. Black circle represents the CCT selected bandwidth of 8.17.

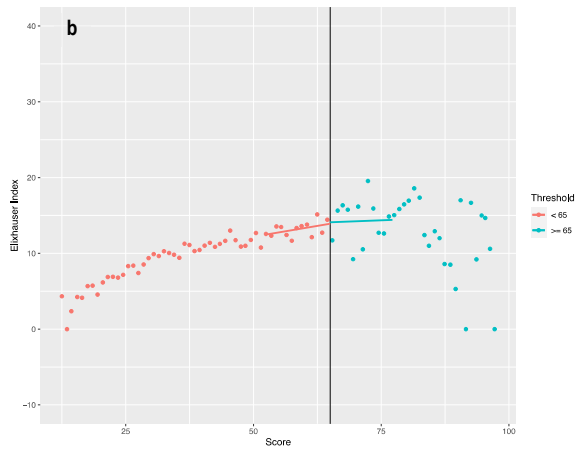
**eFigure 5: Documentation of Huddle by Score**



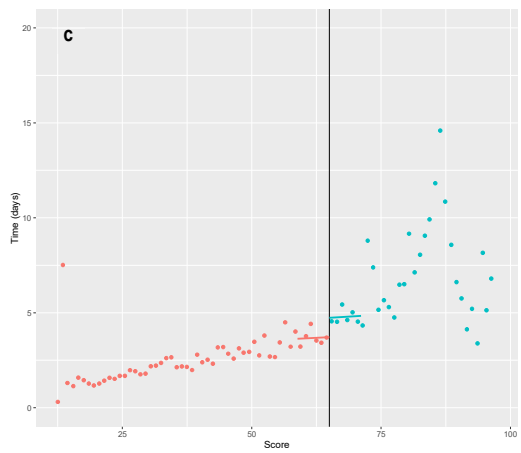
**eFigure 6: Age (A), Elixhauser Comorbidity Index (B), and Time of Maximum EDI Score Since Admission (C) by EDI Score**



RD estimate 1.5 years; 95% CI -2.4 to 5.3, p=0.45

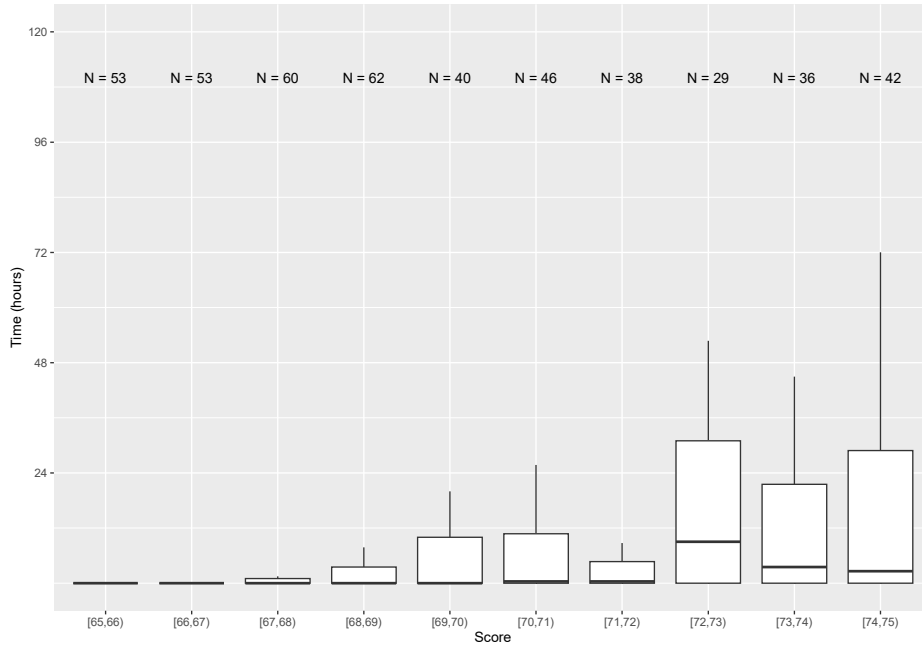


RD estimate 0.01 points; 95% CI -2.8 to 2.8, p=0.99



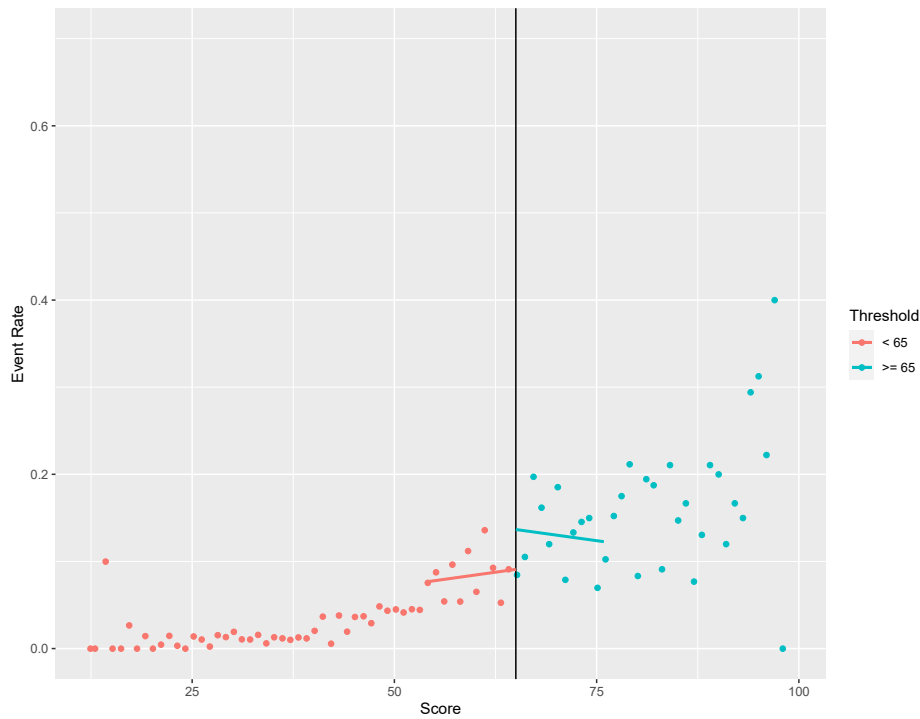
RD estimate 1.2 days; 95% CI -0.7 to 3.1, p=0.20

**eFigure 7: Time from First EDI Score  $\geq 65.0$  to Maximum EDI Score**



Boxplot showing time from first score  $\geq 65$  to maximum risk score by maximum risk score. Bold horizontal line represents the median, edges of the box represent interquartile range (IQR), and vertical lines represent the furthest data point within  $1.5 \times \text{IQR}$  from the edges of the box.

**eFigure 8: Placebo Test for the Primary Outcome**



**eTable 1. Admission Diagnosis Categories**

<b>Diagnosis Category</b>	<b>ICD-10 Codes</b>
Infection	A400, A401, A403, A408, A409, A4101, A4102, A411, A412, A413, A414, A4150, A4151, A4152, A4153, A4159, A4181, A4189, A419, R509, R7881, J1282, U071, U099, A0225, N10, N110, N111, N118, N119, N12, N136, N151, N3000, N3001, N3010, N3011, N3020, N3021, N3030, N3031, N3080, N3081, N3090, N3091, N340, N341, N342, N343, N390, T83510A, T83511A, T83512A, T83518A, T8351XA, T83592A, T83593A, T83598A, T8359XA, J13, J14, J150, J151, J1520, J15211, J15212, J1529, J153, J154, J155, J156, J157, J158, J159, J160, J168, J17, J180, J181, J188, J189, A46, L0390, L0291, L03011, L03012, L03019, L03031, L03032, L03039, L03111, L03112, L03113, L03114, L03115, L03116, L03119, L03211, L03213, L03221, L03311, L03312, L03313, L03314, L03315, L03316, L03317, L03319, L03811, L03818, L0889, L089, M869
Gastrointestinal	G43D0, G43D1, R100, R1010, R1011, R1012, R1013, R102, R1030, R1031, R1032, R1033, R10811, R10812, R10813, R10814, R10815, R10816, R10817, R10819, R10821, R10822, R10823, R10824, R10825, R10826, R10827, R10829, R1083, R1084, R109, R12, R130, R140, R141, R142, R143, R150, R151, R152, R159, R160, R161, R162, R17, R180, R188, R1900, R1901, R1902, R1903, R1904, R1905, R1906, R1907, R1909, R1911, R1912, R1915, R192, R1930, R1931, R1932, R1933, R1934, R1935, R1936, R1937, R194, R195, R196, R197, R198, I8501, I8511, K2081, K2091, K2101, K2211, K250, K252, K254, K256, K260, K262, K264, K266, K270, K272, K274, K276, K280, K282, K284, K286, K2901, K2921, K2931, K2941, K2951, K2961, K2971, K2981, K2991, K31811, K50011, K50111, K50811, K50911, K51011, K51211, K51311, K51411, K51511, K51811, K51911, K5521, K5701, K5711, K5713, K5721, K5731, K5733, K5741, K5751, K5753, K5781, K5791, K5793, K625, K920, K921, K922, K850, K8500, K8501, K8502, K851, K8510, K8511, K8512, K852, K8520, K8521, K8522, K853, K8530, K8531, K8532, K858, K8580, K8581, K8582, K859, K8590, K8591, K8592, K7030, K7031, K7040, K7041, K7200, K7201, K7210, K7211, K7290, K7291, K9182, K7682, K7460, R7401, K3184, R112, K56609, K529
Cardiovascular	R001, R000, I110, I130, I132, I501, I5020, I5021, I5022, I5023, I5030, I5031, I5032, I5033, I5040, I5041, I5042, I5043, I50810, I50811, I50812, I50813, I50814, I5082, I5083, I5084, I5089, I509, I2101, I2102, I2109, I2111, I2119, I2121, I2129, I213, I214, I219, I21A1, I21A9, I220, I221, I222, I228, I229, I200, I202, I240, I249, I25110, I25112, I25700, I25702, I25710, I25712, I25720, I25722, R072, R0789, R079, G9001, R55, I950, I951, I952, I953, I9581, I9589, I959, I470, I471, I472, I4720, I4721, I4729, I479, I480, I481, I4811, I4819, I482, I4820, I4821, I483, I484, I4891, I4892, I491, I492, I493, I4940, I4949, I495, I498, I499, G43601, G43609, G43611, G43619, I6300, I63011, I63012, I63013, I63019, I6302, I63031, I63032, I63033, I63039, I6309, I6310, I63111, I63112, I63113, I63119, I6312, I63131, I63132, I63133, I63139, I6319, I6320, I63211, I63212, I63213, I63219, I6322, I63231, I63232, I63233, I63239, I6329, I6330, I63311, I63312, I63313, I63319, I63321, I63322, I63323, I63329, I63331, I63332, I63333, I63339, I63341, I63342, I63343, I63349, I6339, I6340, I63411, I63412, I63413, I63419, I63421, I63422, I63423, I63429, I63431, I63432, I63433, I63439, I63441, I63442, I63443, I63449, I6349, I6350, I63511, I63512, I63513, I63519, I63521, I63522, I63523, I63529, I63531, I63532, I63533, I63539, I63541, I63542, I63543, I63549, I6359, I636, I638, I6381, I6389, I639, G450, G451, G452, G453, G458, G459, I2602, I2609, I2692, I2693, I2694, I2699, I160, I161, I169, I674
Respiratory	J410, J411, J418, J42, J430, J431, J432, J438, J439, J440, J441, J449, J470, J471, J479, J80, J95821, J95822, J9600, J9601, J9602, J9610, J9611, J9612, J9620, J9621, J9622, J9690, J9691, J9692, R092, J810, R0902, R0609, J690, J691, J698, R0600, J90, R0602, R0603, J4520, J4521, J4522, J4530, J4531, J4532, J4540, J4541, J4542, J4550, J4551, J4552, J45901, J45902, J45909, J45990, J45991, J45998, J8281, J8282, J8283, J8410, J84111, J84112, J84113, J84114, J84115, J84116, J84117, J8417, J84170, J84178, J8489, J849
Malignancy	C00-C96, D00-D49