

SUPPLEMENTARY MATERIAL

Estimated Respiratory Syncytial Virus-related Hospitalizations and Deaths Among Children and Adults in Spain, 2016–2019

AUTHOR DETAILS:

Mariana Haeberer¹, Robin Bruyndonckx², Aleksandra Polkowska-Kramek², Antoni Torres³, Caihua Liang¹, Charles Nuttens¹, Maribel Casas², Francesca Lemme², Worku Biyadgie Ewnetu², Thao Mai Phuong Tran², Jessica E. Atwell¹, Cristina Mendez Diez¹, Bradford D. Gessner¹, Elizabeth Begier¹

Affiliations:

¹ Pfizer SL, Spain; Pfizer Inc, France; Pfizer Inc, USA; Pfizer Inc, Ireland.

² Epidemiology & Pharmacovigilance, P95, Leuven, Belgium.

³ Clínic Barcelona Hospital, Spain.

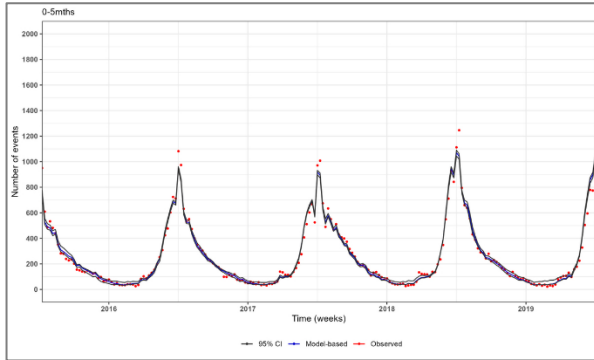
Supplementary Table 1. ICD-10 CM codes included in outcome definitions

Outcome category	ICD-10-CM
Cardiorespiratory	J00-J99, I42-I43, I50, I51.7, I20-I25, I44-I49, I60-I68
All respiratory	J00-J99
Influenza or pneumonia	J09-J18
Bronchitis or bronchiolitis	J20-J22
Chronic lower respiratory diseases	J40-J47
Upper respiratory diseases	J00-J06, J30-J39
Chronic heart failure exacerbations	I42-I43, I50, I51.7
Ischemic heart diseases	I20-I25
Arrhythmias	I44-I49
Cerebrovascular diseases	I60-I68
RSV-specific	B97.4, J21.0, J12.1, J20.5

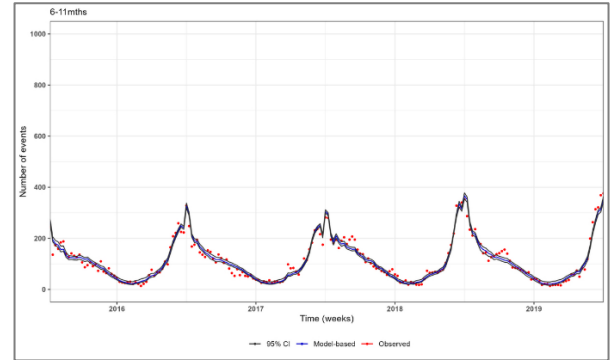
Supplementary Figure 1. Estimated (model-based) vs observed plots of primary outcomes in children and adults, Spain, 2016–2019

A. Estimated (model-based) vs observed respiratory hospitalizations in children aged 0–5 months (A), 6–11 months (B), 12–23 months (C), 2–5 years (D) and 6–17 years (E), Spain, 2016–2019

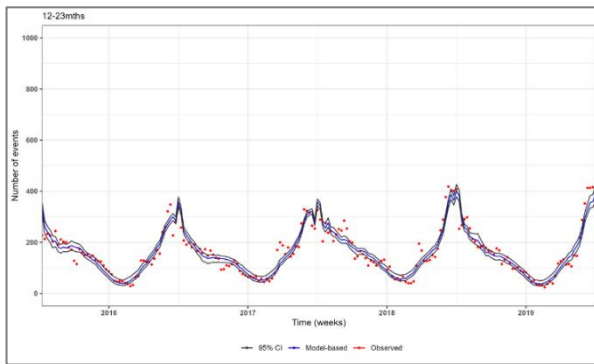
A



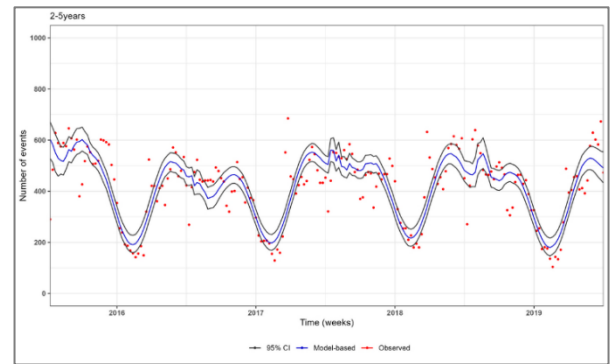
B



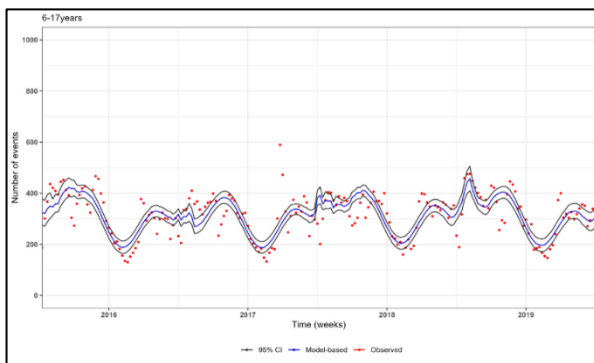
C



D

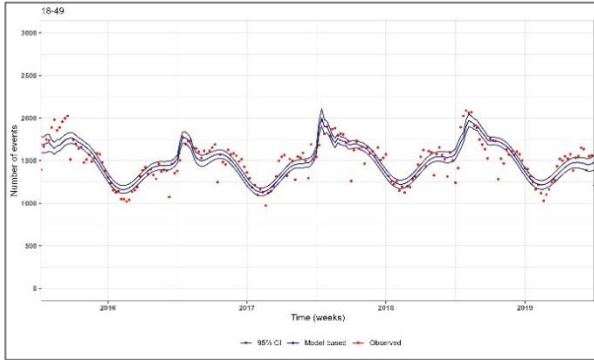


E

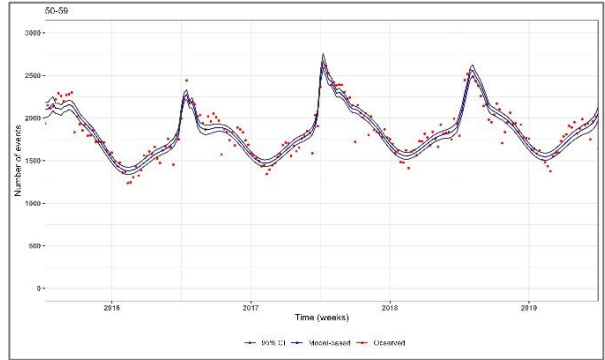


B. Estimated (model-based) vs observed cardiorespiratory hospitalizations in adults aged 18–49 (A), 50–59 (B), 60–79 (C), and ≥80 years (D), Spain 2016–2019

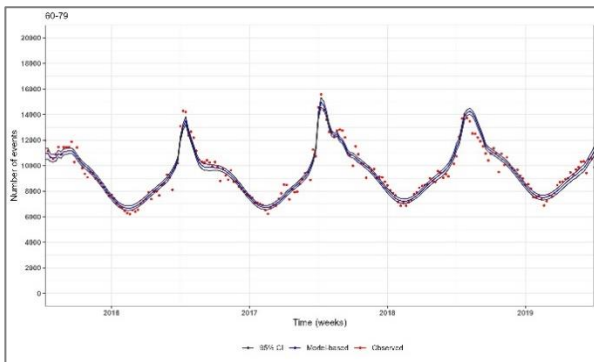
A



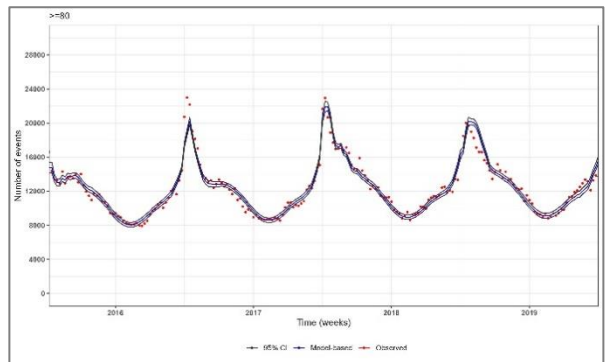
B



C

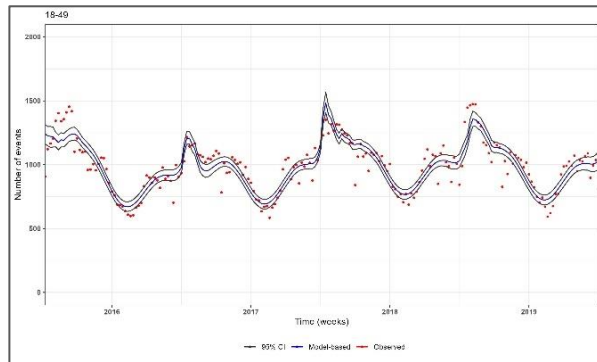


D

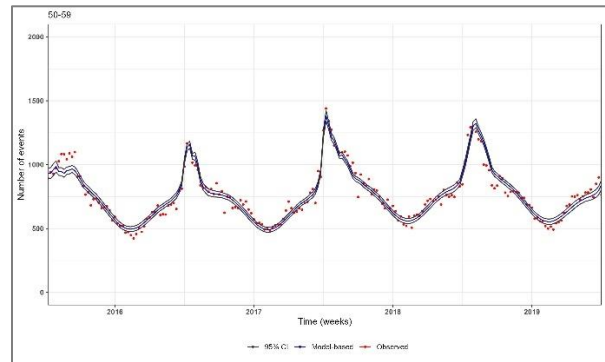


C. Estimated (model-based) vs observed respiratory hospitalizations in adults aged 18–49 (A), 50–59 (B), 60–79 (C), and ≥80 years (D), Spain, 2016–2019

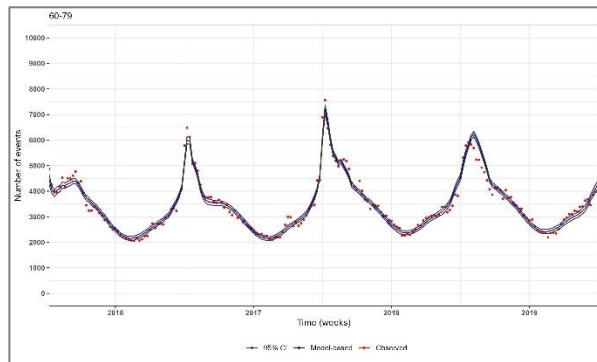
A



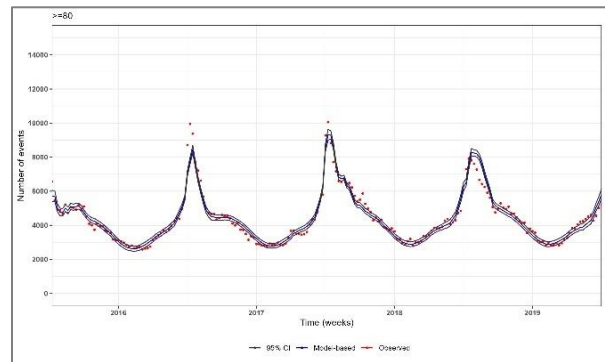
B



C

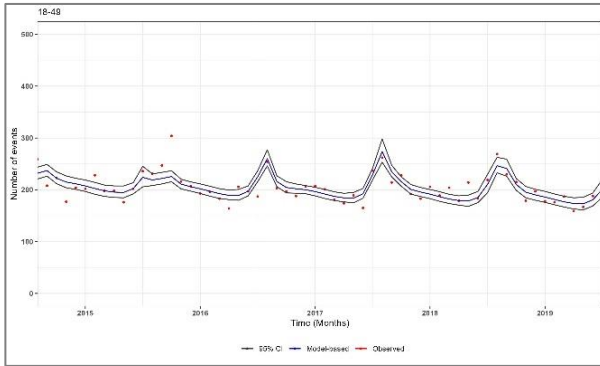


D

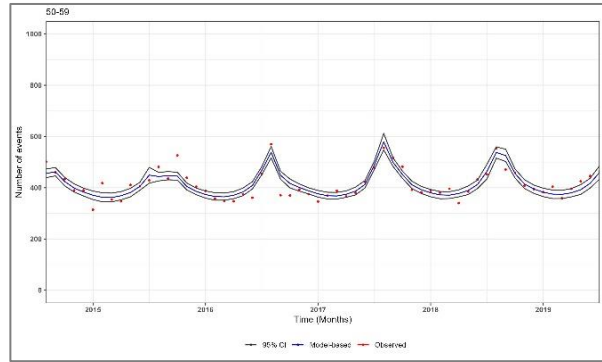


D. Estimated (model-based) versus observed underlying cardiorespiratory deaths in adults aged 18–49 (A), 50–59 (B), 60–79 (C), and ≥80 years (D), Spain, 2016–2019

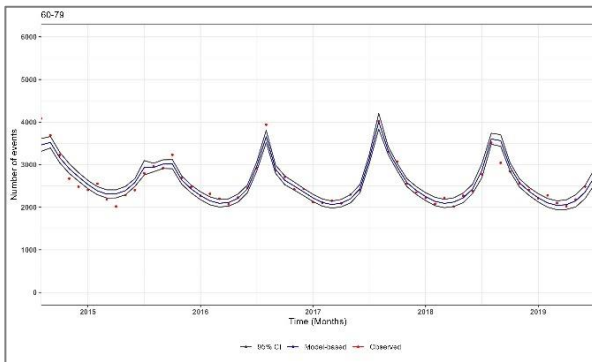
A



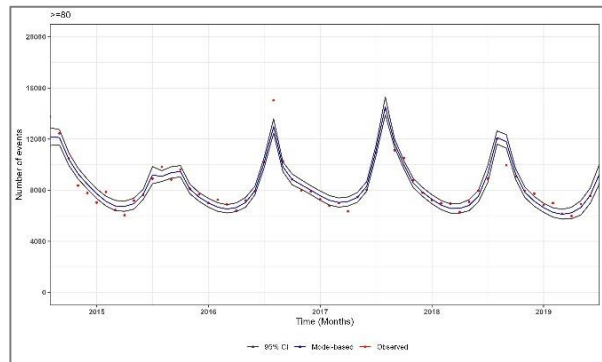
B



C

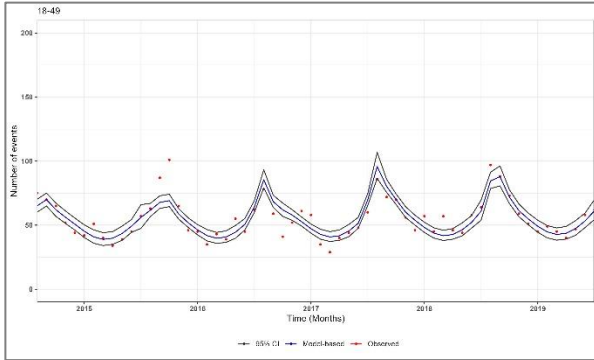


D

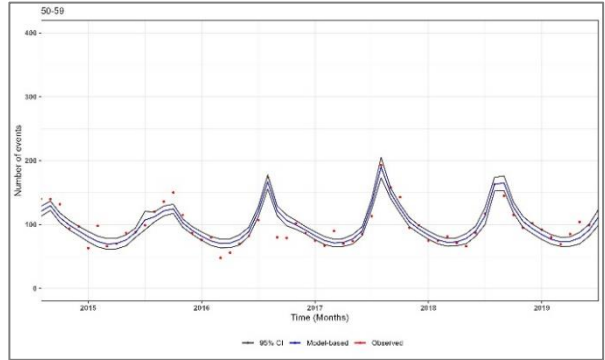


E. Estimated (model-based) versus observed underlying respiratory deaths in adults aged 18–49 (A), 50–59 (B), 60–79 (C), and ≥80 years (D), Spain, 2016–2019

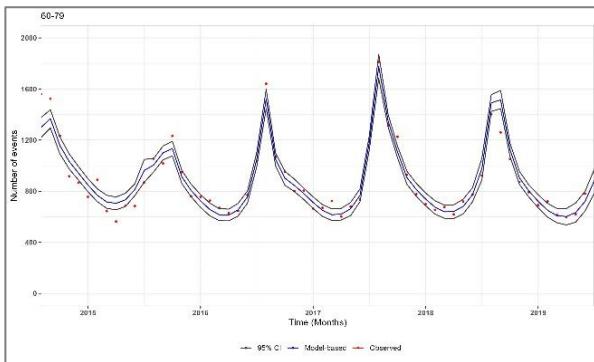
A



B



C



D

