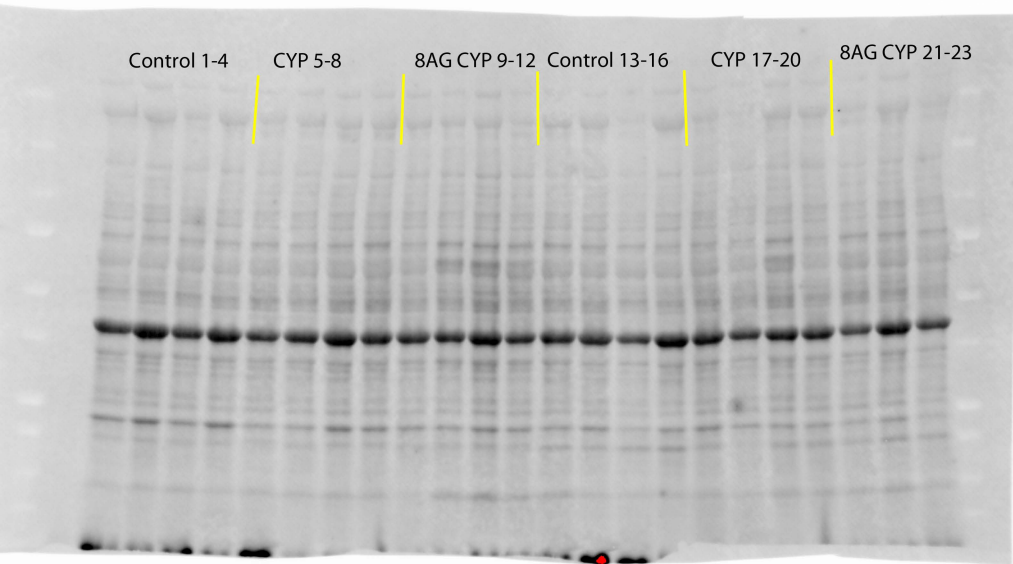
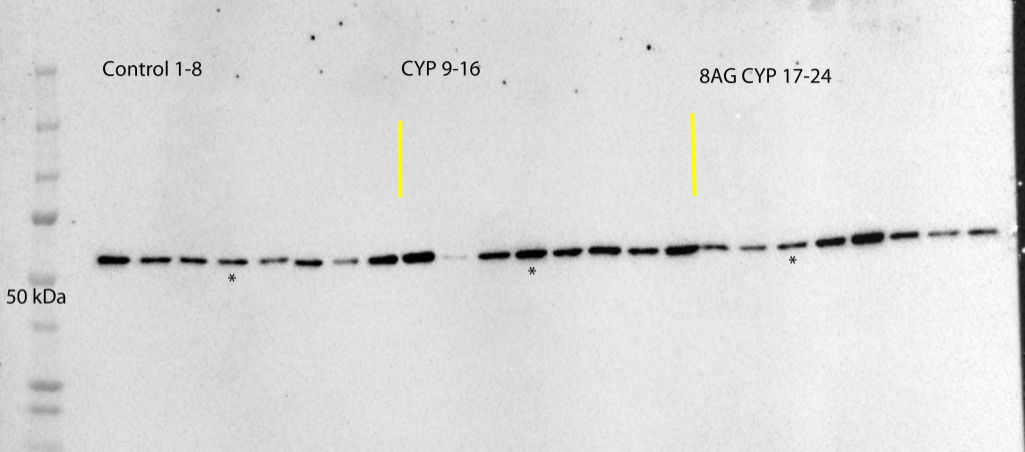


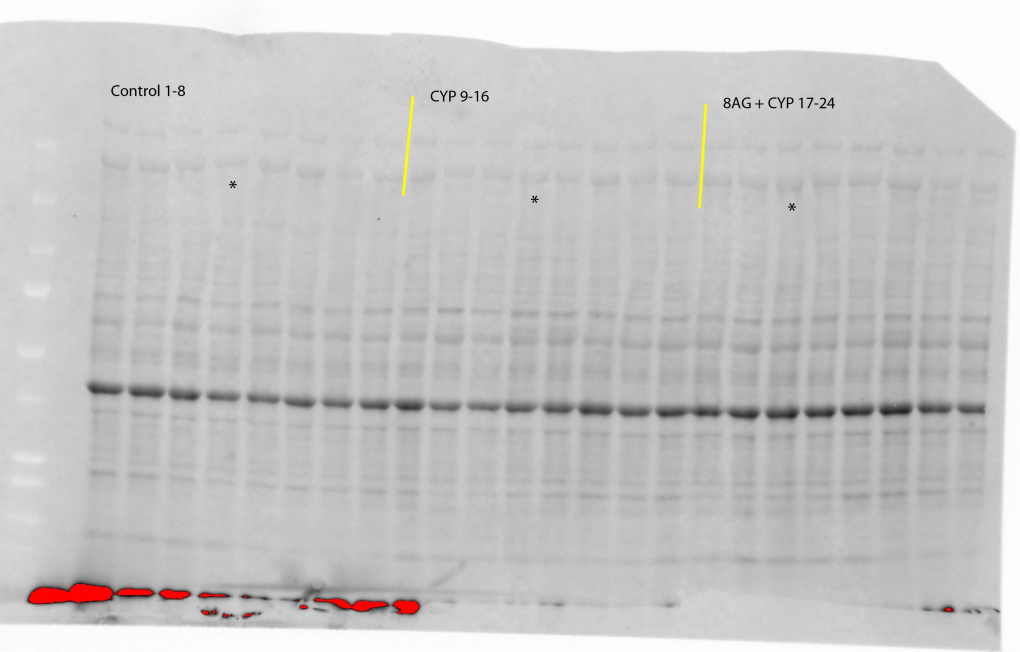
Full unedited blot (1 of 2) for Figure 1M,  
MST3b (59kDa), top portion of membrane probed. Cell Signaling 4062, representative bands taken from different blot.



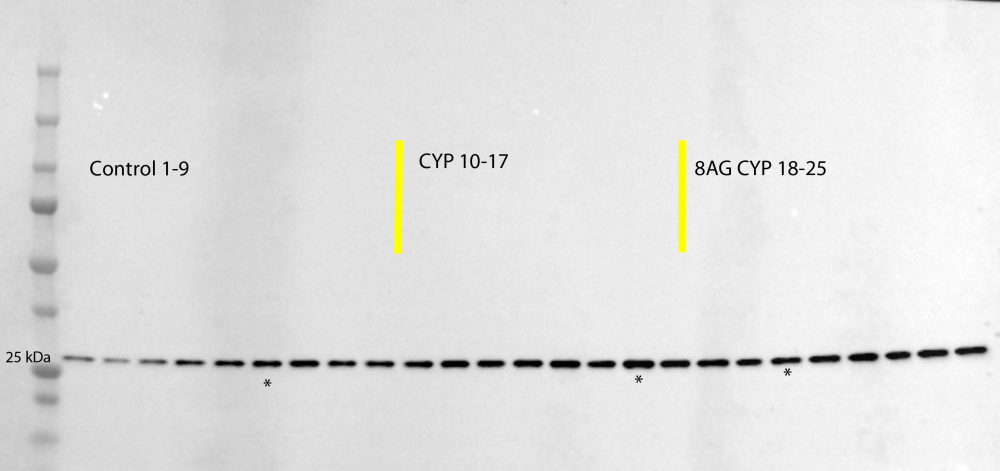
Full unedited stain free blot (1 of 2) for Figure 1M (MST3b)  
Representative lanes taken from blot 2



Full unedited blot (2 of 2) for figure 1M  
MST3b (59kDa), Cell Signaling 4062, represented bands indicated by \*



Full unedited stain free blot (2 of 2) for Figure 1M (MST3b)  
Representative lanes marked by \*



Full unedited blot (1 of 1) for Figure 1N  
PNPase (32kDa), Atlas Antibodies HPA001625, representative bands marked by \*

Control 1-9

CYP 10-17

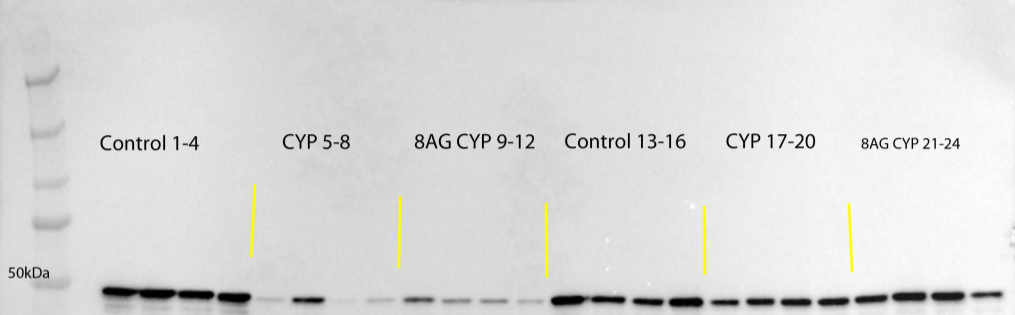
8AG CYP 18-25

\*

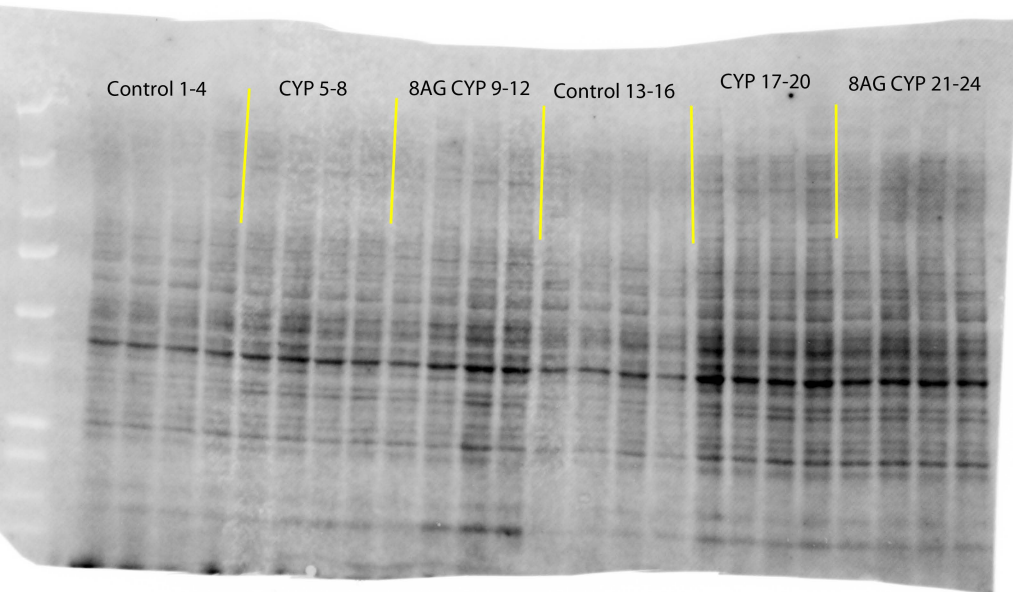
\*

\*

Full unedited stain free, total protein blot (1 of 1) for Figure 1N (PNPase)  
Representative lanes marked by \*

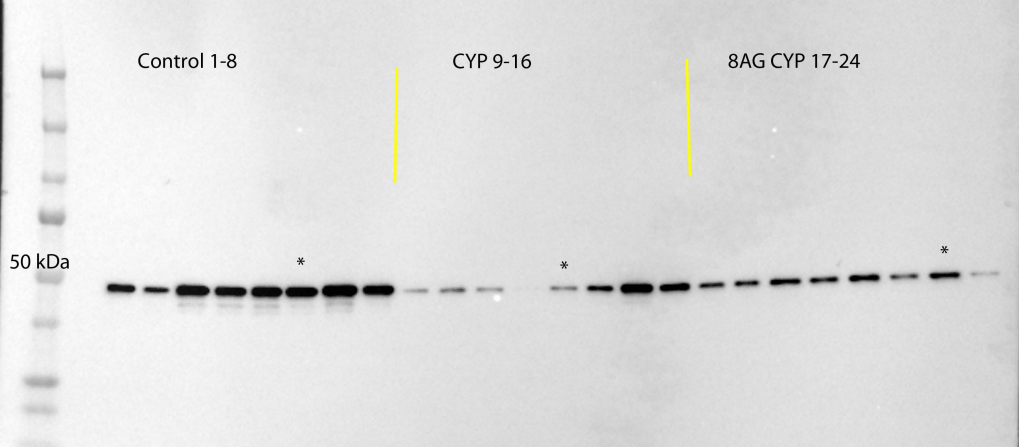


Full unedited blot for figure 2G (blot 1 of 2)  
cytokeratin 20 (48kDa) Abcam AB230524, representative bands taken from blot 2

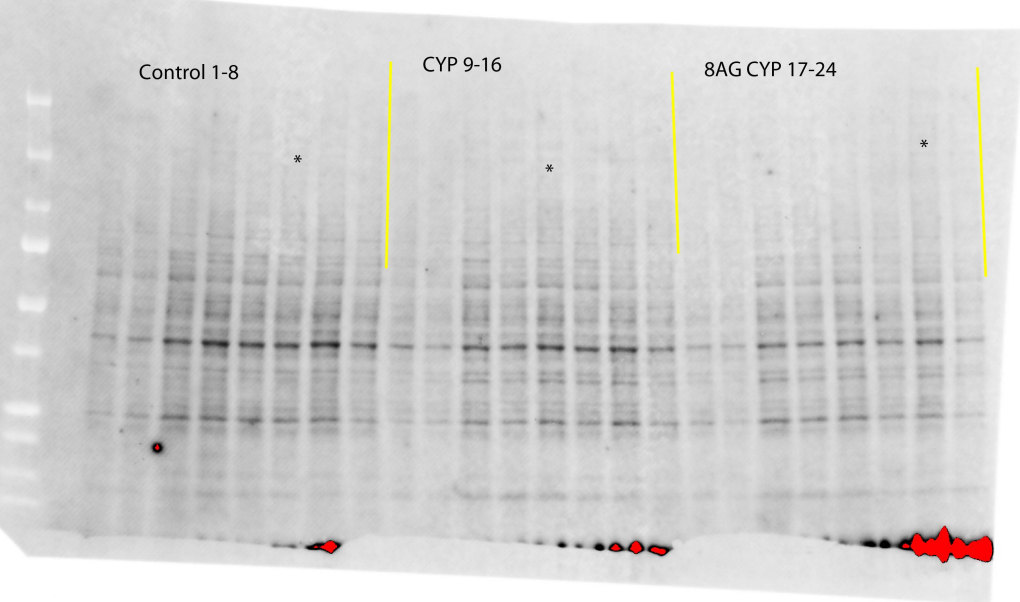


Full unedited stain free, total protein blot (blot 1 of 2) for Figure 2G (Cytokeratin 20)  
Representative lanes taken from blot 2





Full unedited blot (2 of 2) for figure 2G  
cytokeratin 20 (48kDa) Abcam AB230524, representative bands marked with \*



Control 1-8

CYP 9-16

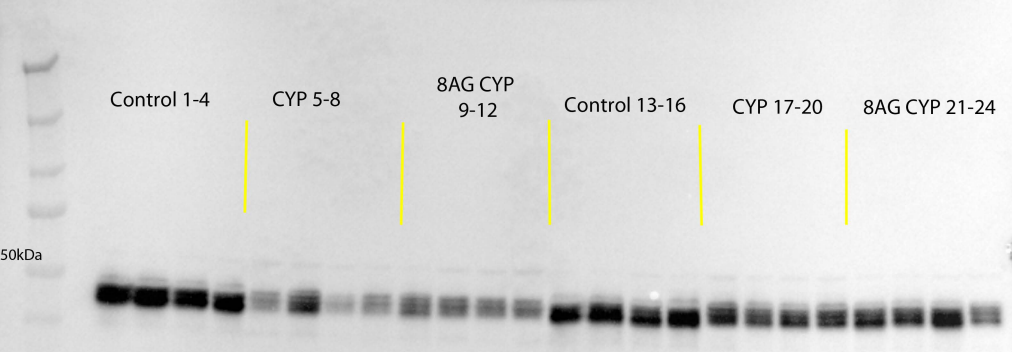
8AG CYP 17-24

\*

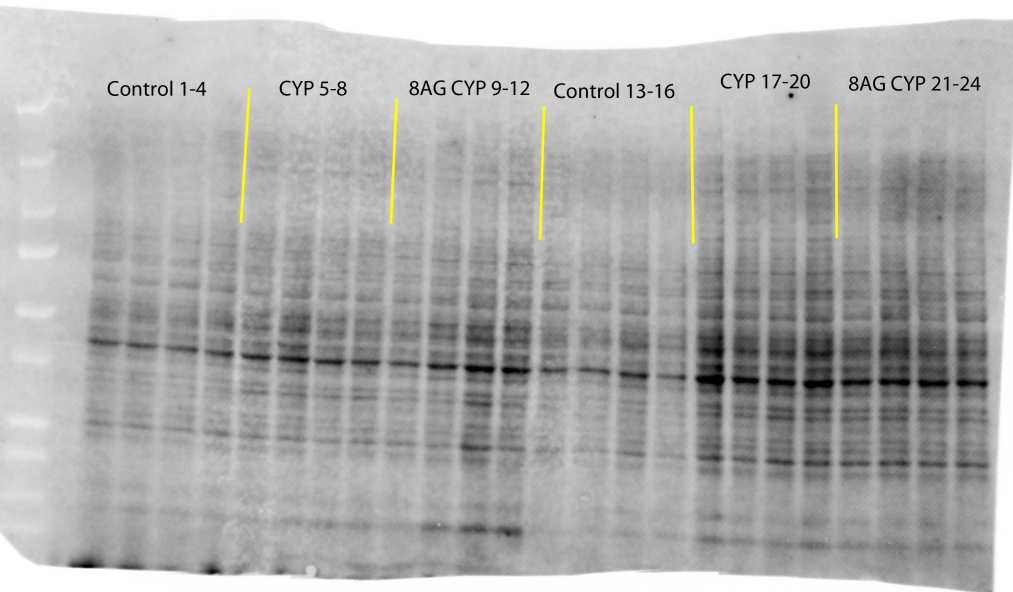
\*

\*

Full unedited stain free blot (2 of 2) for Figure 2G (Cytokeratin 20)  
Representative lanes marked by \*



Full unedited blot (blot 1 of 2) for figure 2H  
predicted MW 31kDa, post-translationally glycosylated  
uroplakin III Abcam AB231576, representative bands taken from blot 2



Full unedited stain free, total protein blot (blot 1 of 2) for Figure 2H (Uroplakin III)  
Representative lanes taken from blot 2

Control 1-8

CYP 9-16

8AG CYP 17-24

37kDa

\*

\*

\*

Full unedited blot (blot 2 of 2) for figure 2H  
predicted MW 31kDa, post-translationally glycosylated  
uroplakin III Abcam AB231576, representative bands indicated by \*

Control 1-8

CYP 9-16

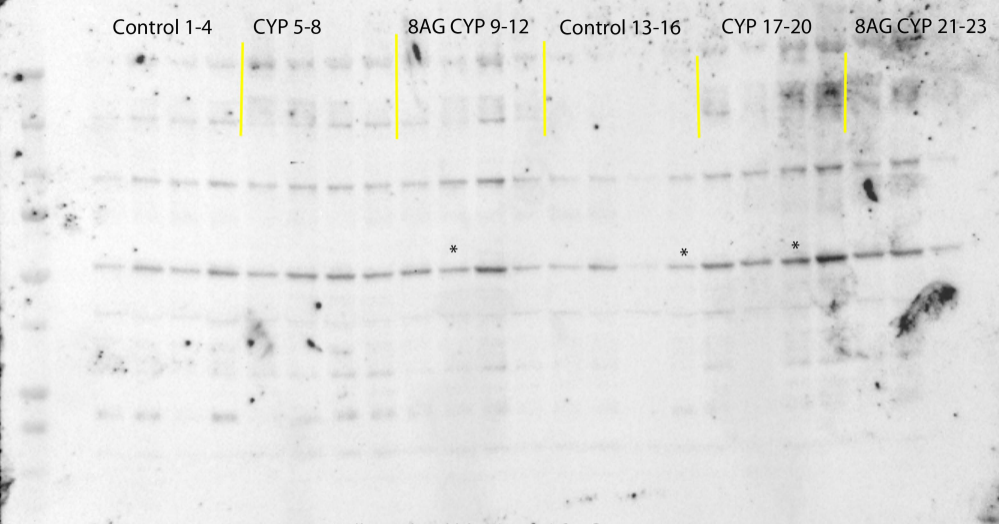
8AG CYP 17-24

\*

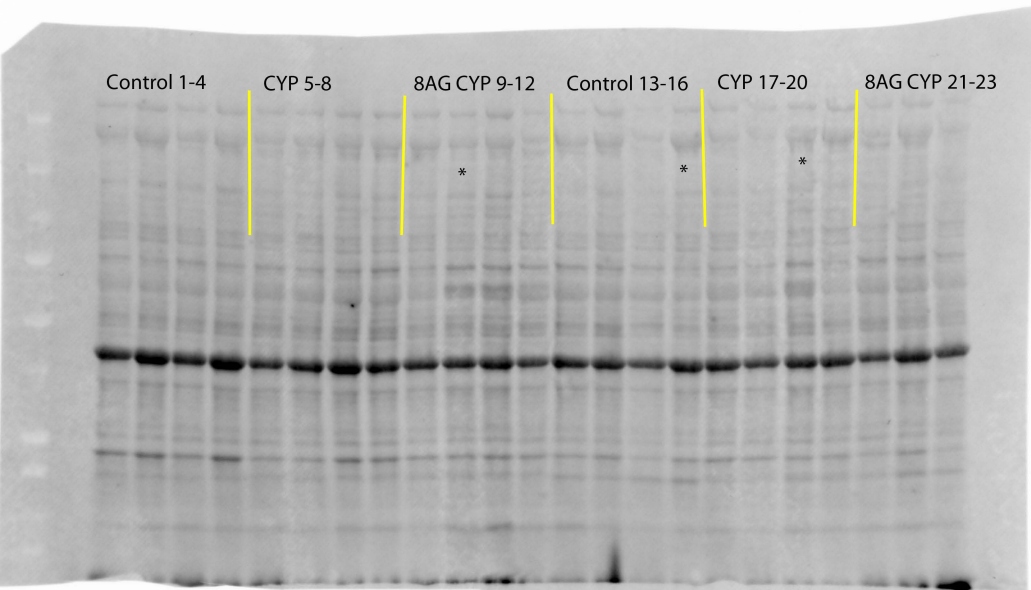
\*

\*

Full unedited stain free, total protein blot (blot 2 of 2) for Figure 2H (Uroplakin III)  
Representative lanes marked by \*



Full unedited blot (1 of 2) for figure 3A  
Nitrotyrosine (multiple bands), Enzo life sciences BML-SA-468-100  
representative bands indicated by \*



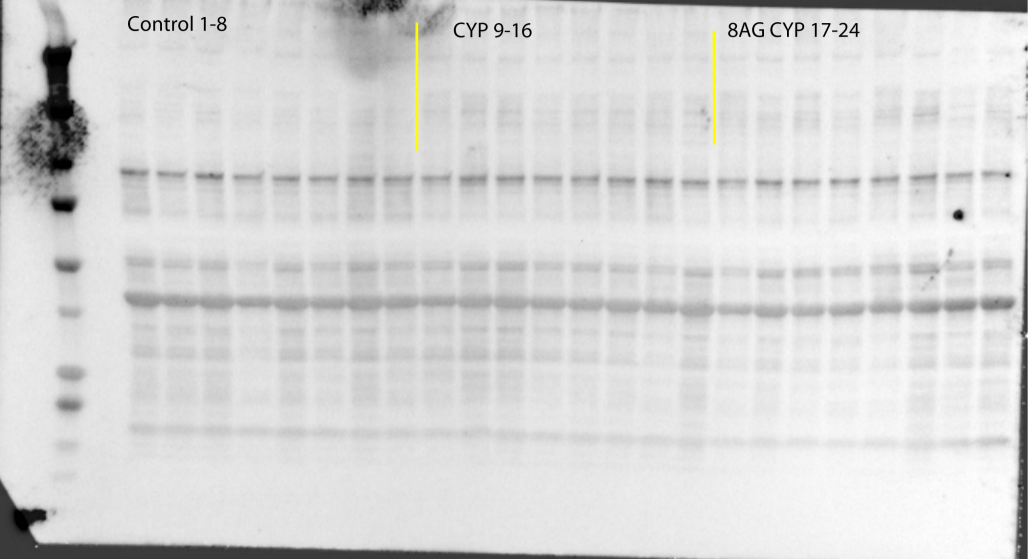
Full unedited stain free, total protein blot (blot 1 of 2) for Figure 3A (nitrotyrosine)  
Representative lanes indicated by \*



Control 1-8

CYP 9-16

8AG CYP 17-24



Full unedited blot (2 of 2) for figure 3A  
Nitrotyrosine (multiple bands), Enzo Life Sciences BML-SA-468-100,  
representative bands taken from blot 1

Control 1-8

CYP 9-16

8AG CYP 17-24

Full unedited stain free, total protein blot (blot 2 of 2) for Figure 3A (nitrotyrosine)  
Representative lanes taken from blot 1

Control 1-8

CYP 9-16

8AG CYP 17-24

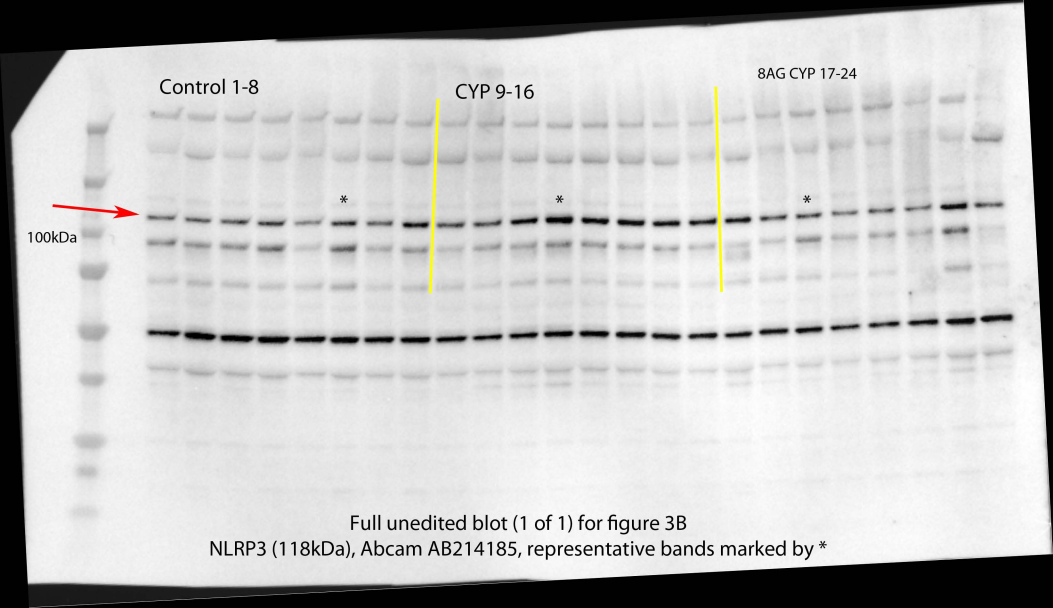
100kDa

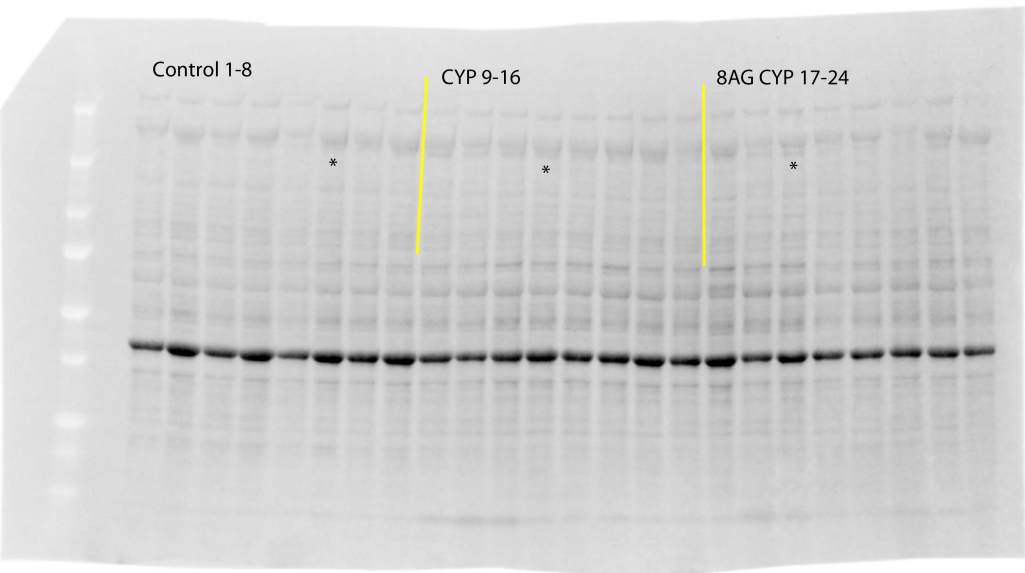
\*

\*

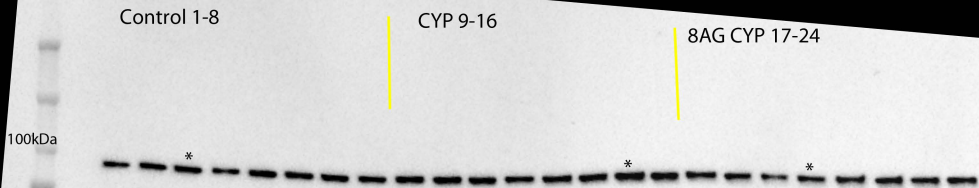
\*

Full unedited blot (1 of 1) for figure 3B  
NLRP3 (118kDa), Abcam AB214185, representative bands marked by \*

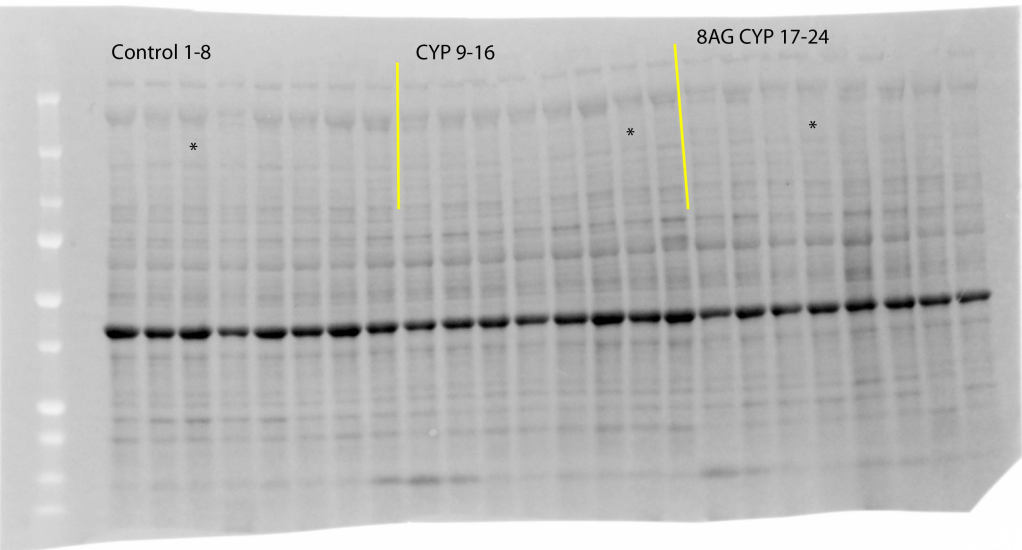




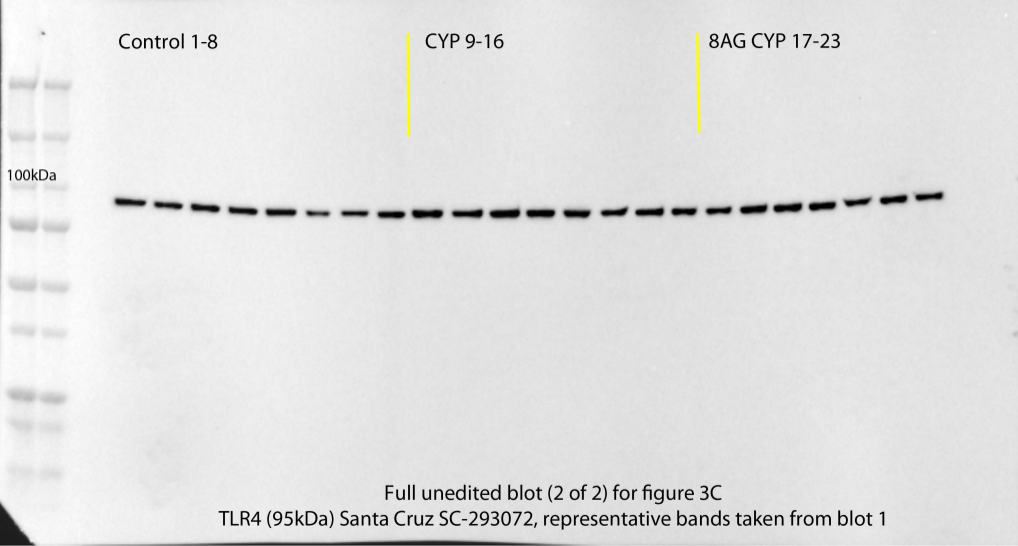
Full unedited stain free blot (1 of 1) for Figure 3B (NLRP3)  
Representative lanes marked by \*



Full unedited blot (1 of 2) for figure 3C  
TLR4 (95kDa) Santa Cruz SC-293072, representative bands marked by \*



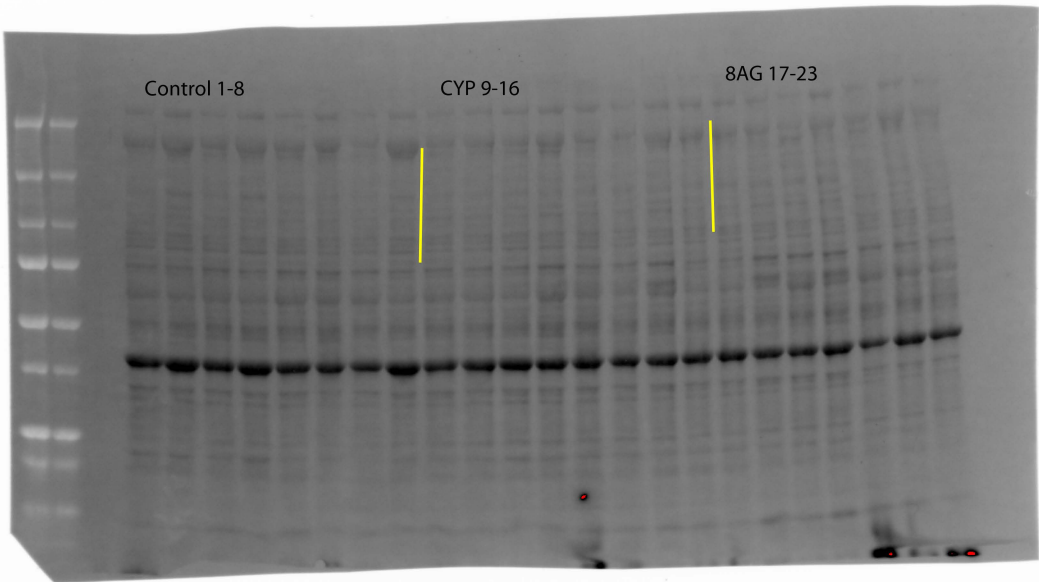
Full unedited stain free blot (1 of 2) for Figure 3C TLR4  
Representative lanes indicated by \*



Control 1-8

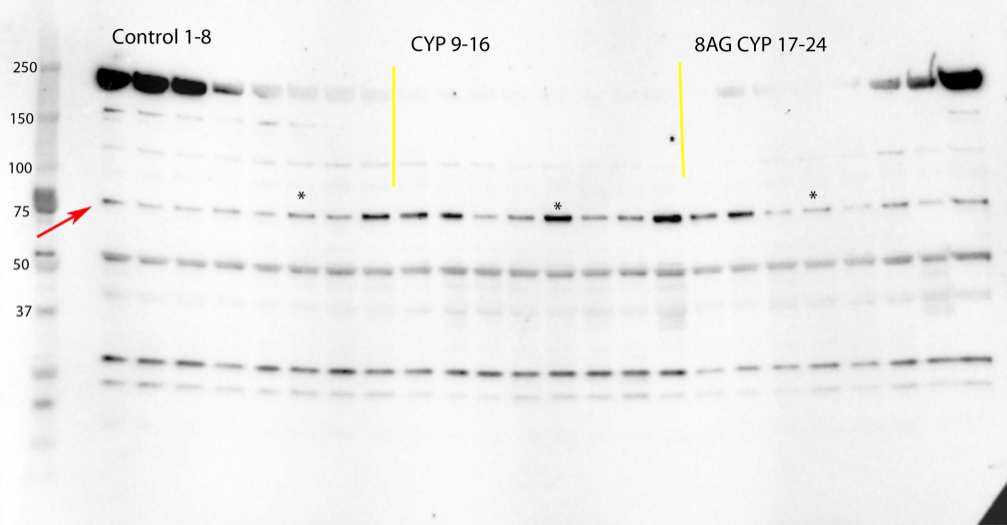
CYP 9-16

8AG 17-23



Full unedited stain free blot (2 of 2) for Figure 3C (TLR4)  
Representative lanes taken from blot 1





Full unedited blot (1 of 1) for figure 3D  
HIF1 $\alpha$  (80kDa) Abcam AB216842, representative bands marked by \*

Control 1-8

CYP 9-16

8AG CYP 17-24

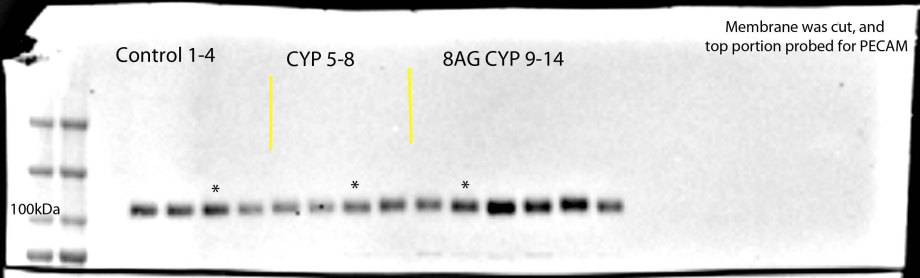
\*

\*

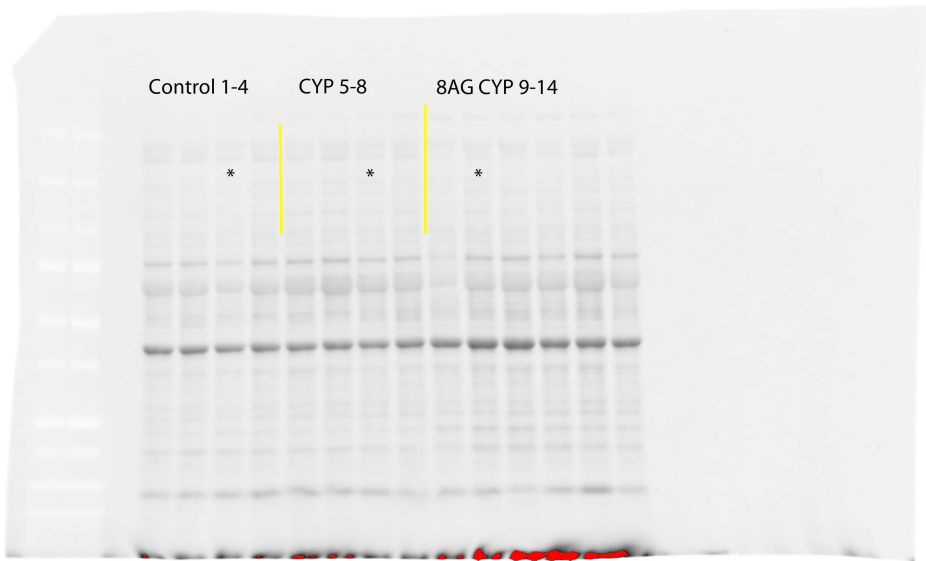
\*



Full unedited stain free blot (1 of 1) for Figure 3D HIF-1alpha  
Representative lanes indicated by \*



Full unedited blot (1 of 2) for figure 3E  
PECAM (130kDa) Novus Biosciences NB100-2284, representative bands marked by \*  
membrane was cut and top portion probed for PECAM



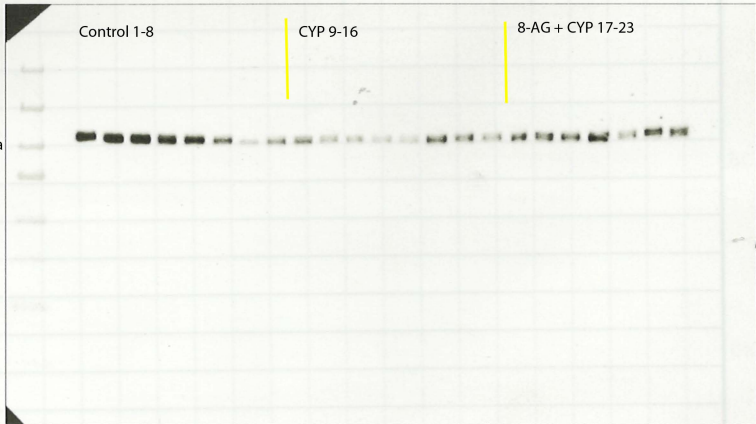
Full unedited stain free blot (1 of 2) for Figure 3E PECAM  
Representative lanes indicated by \*

100kDa

Control 1-8

CYP 9-16

8-AG + CYP 17-23



Full unedited blot (2 of 2) for figure 3E  
PECAM (130kDa) Novus Biosciences NB100-2284,  
representative bands taken from blot 1