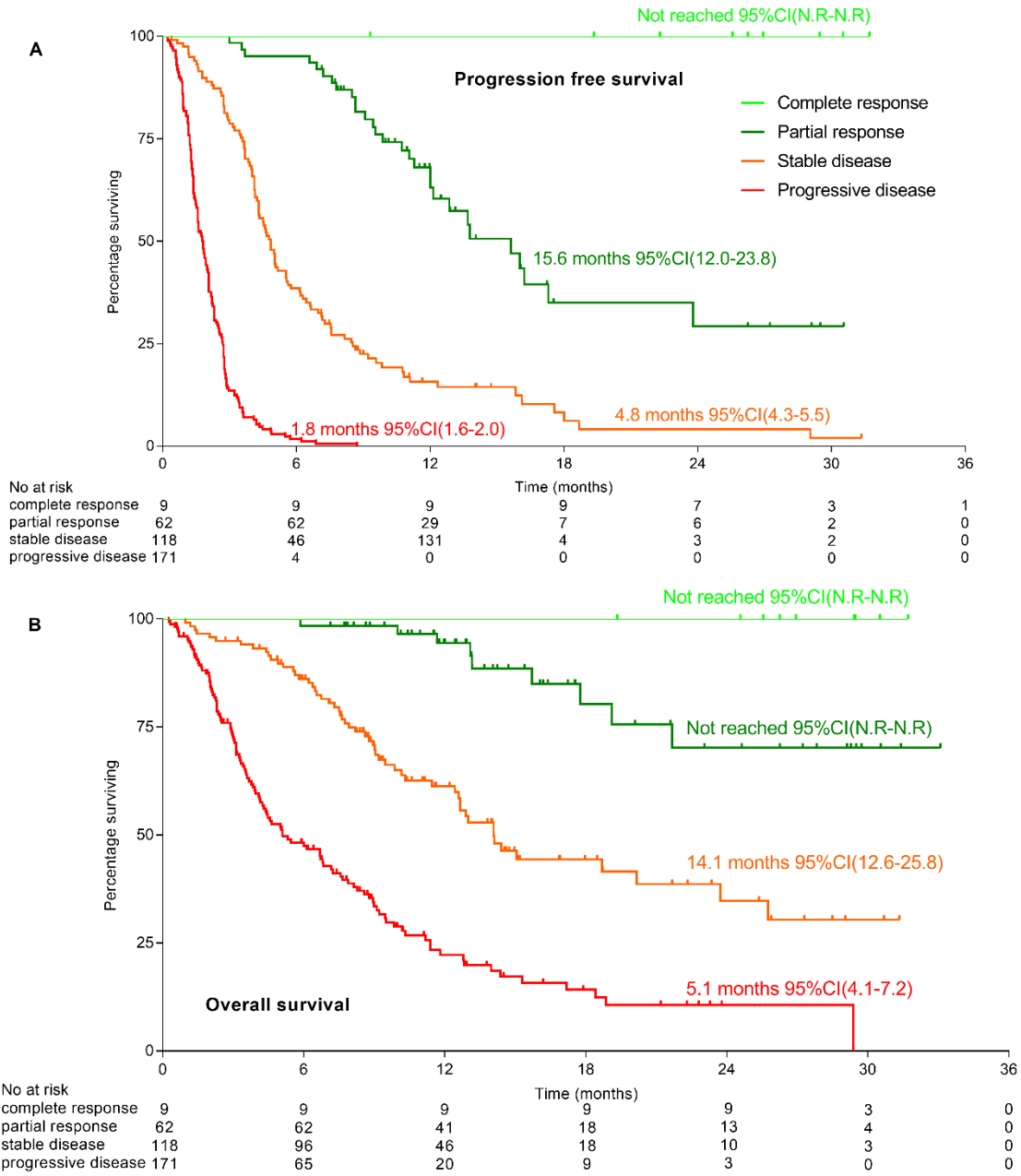
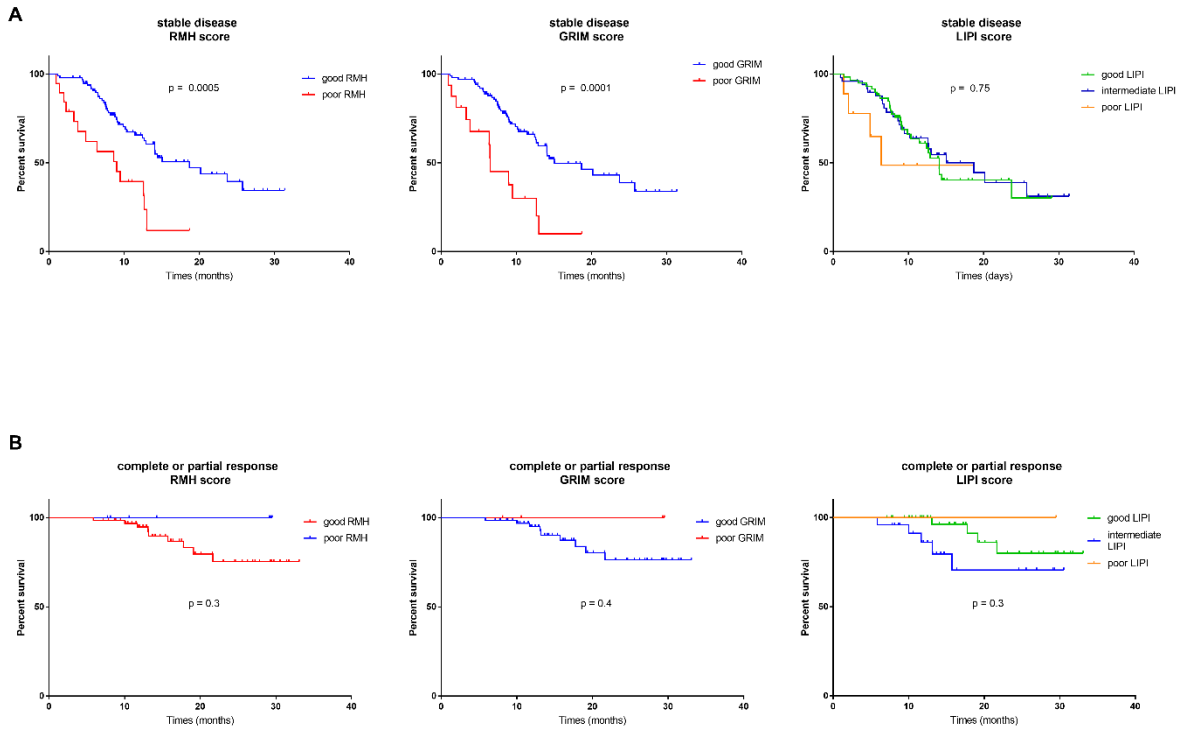


SUPPLEMENTARY FIGURES

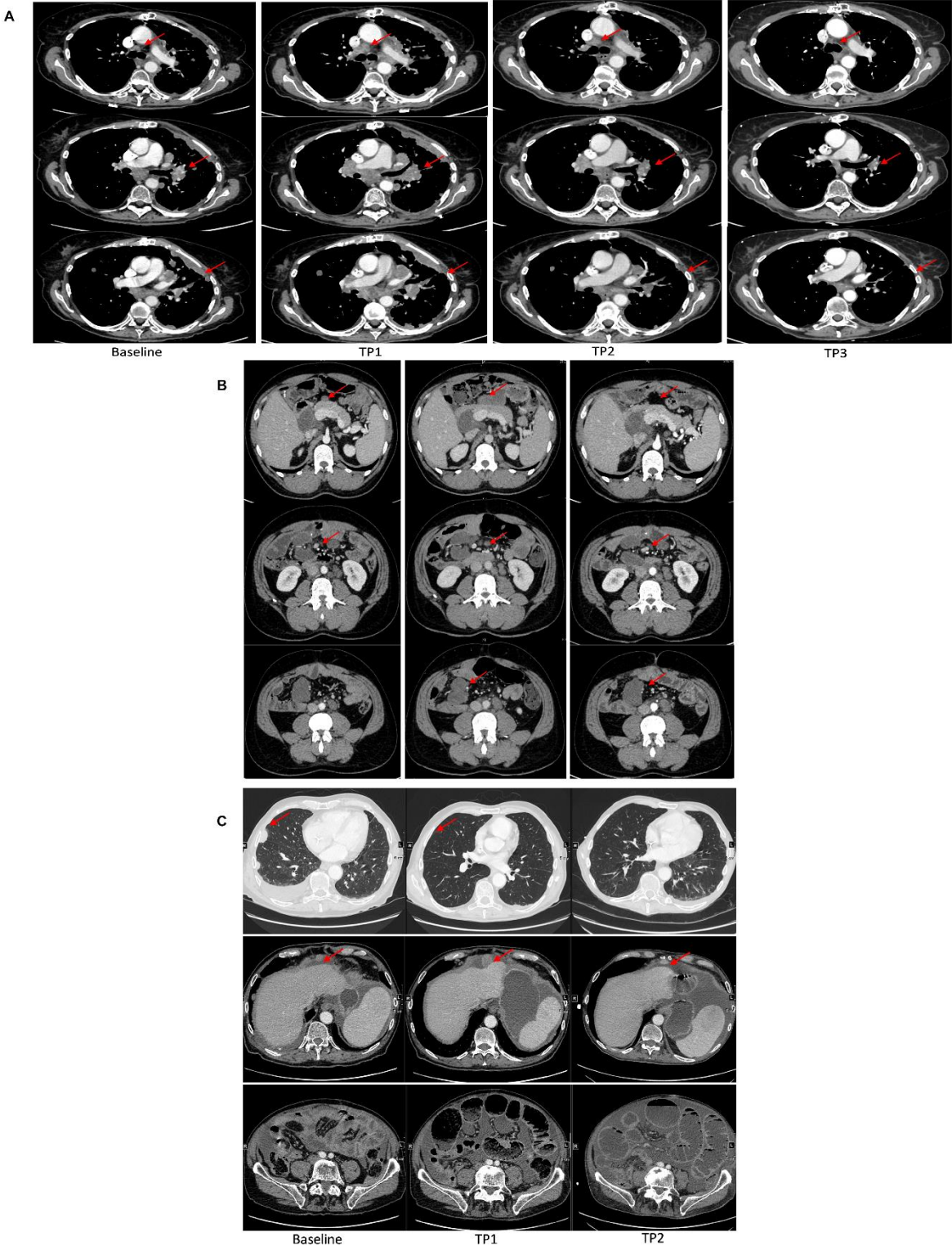
Supplementary Figure 1. Outcomes of patients according to the best radiological assessment (A) Confirmed Progression free-survival (PFS) et (B) Overall survival (OS).



Supplementary Figure 2. Overall survival of patients achieving stable disease (A) and complete or partial response (B) according to prognostic scores.



Supplementary Figure 3. Examples of imaging of patients who experienced atypical response: (A) Pseudoprogession of mediastinal lymph nodes and a pleural lesion achieving partial response; (B) pseudoprogession of peritoneal carcinomatosis achieving stable disease; (C) dissociated response with pleural response and peritoneal carcinomatosis progression.



Supplementary Figure 4. (A) Progression free-survival (PFS) and (B) Overall survival (OS) according to radiological response (pseudoprogression and dissociated response)

