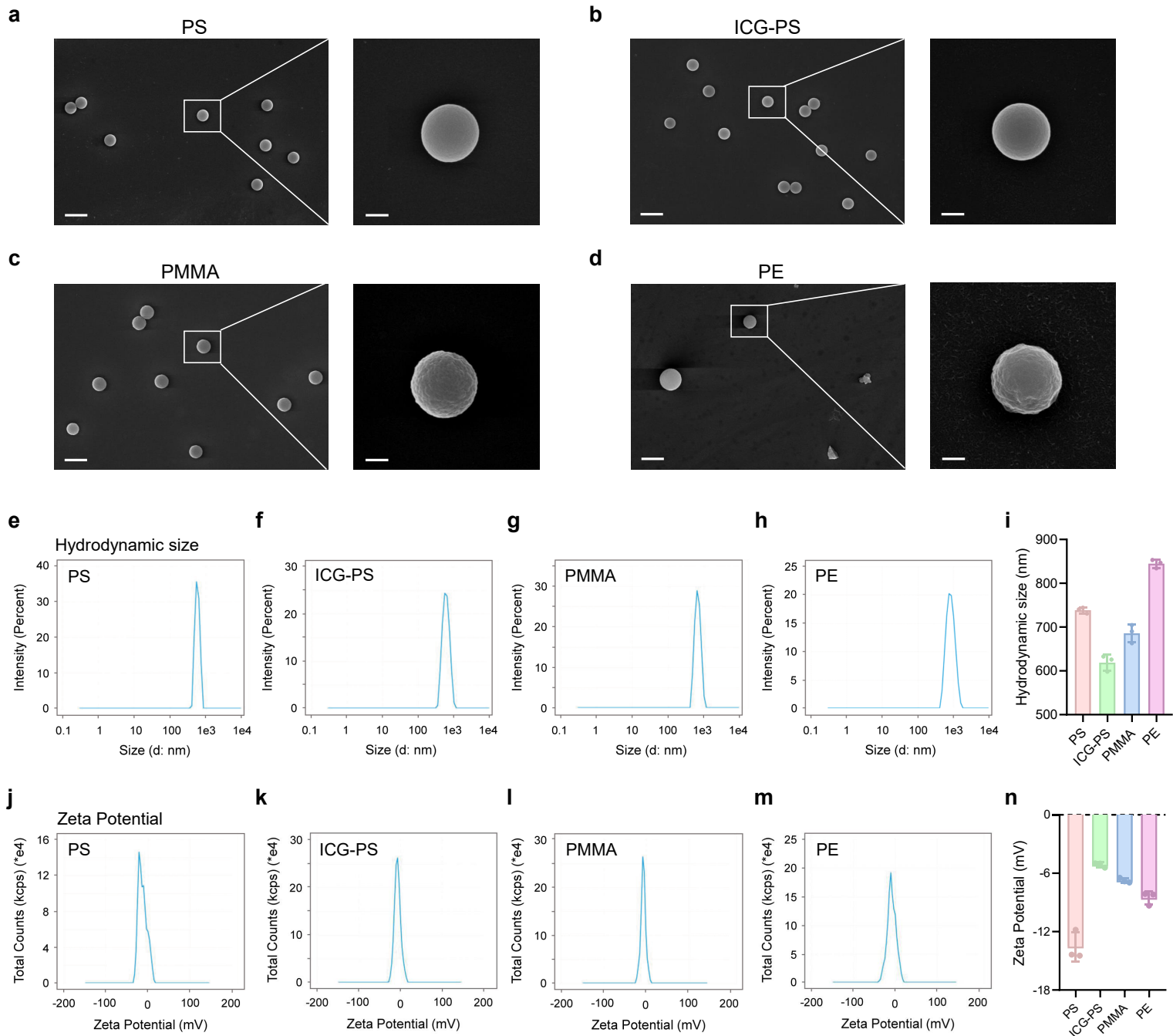


Supplementary Fig. S1



Supplementary Fig. S1 | Physical characterization of microplastics.

a-d, Representative scanning electron microscope (SEM) image of PS (**a**), ICG-PS (**b**), PMMA (**c**) and PE (**d**). Scale bar, 1 μm (left) or 200 nm (right). **e-h**, Representative Dynamic light scattering (DLS) characterization for PS (**e**), ICG-PS (**f**), PMMA (**g**) and PE (**h**). **i**, Statistical plot of hydrodynamic size. **j-m**, Representative zeta potential characterization for PS (**j**), ICG-PS (**k**), PMMA (**l**) and PE (**m**). **n**, Statistical plot of zeta potential. At least three independent experiments were taken (n=3).