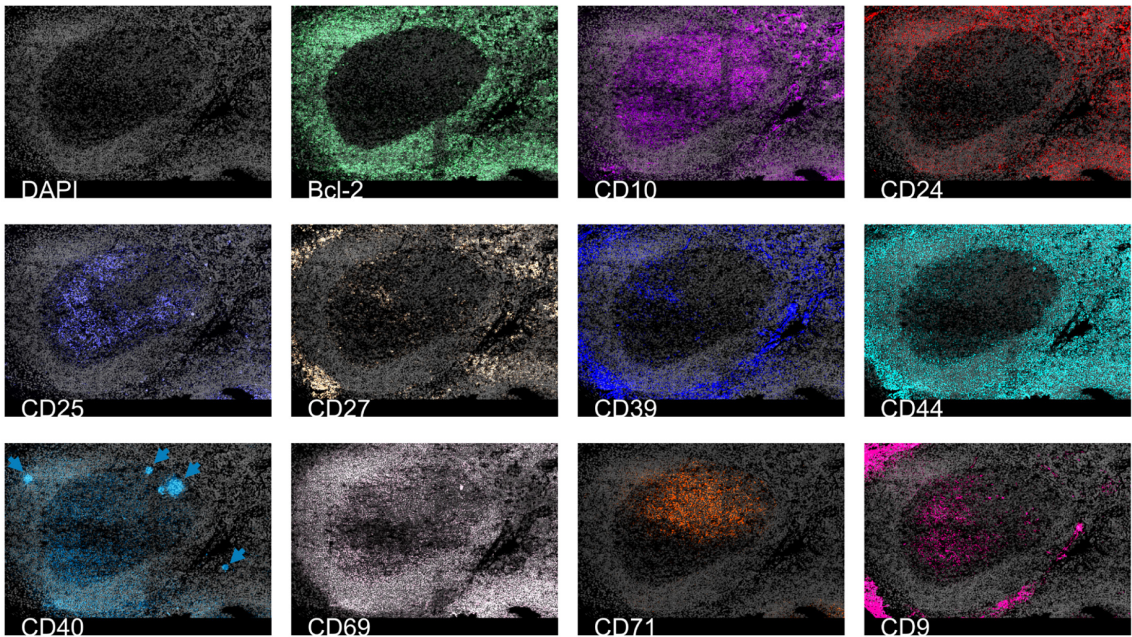
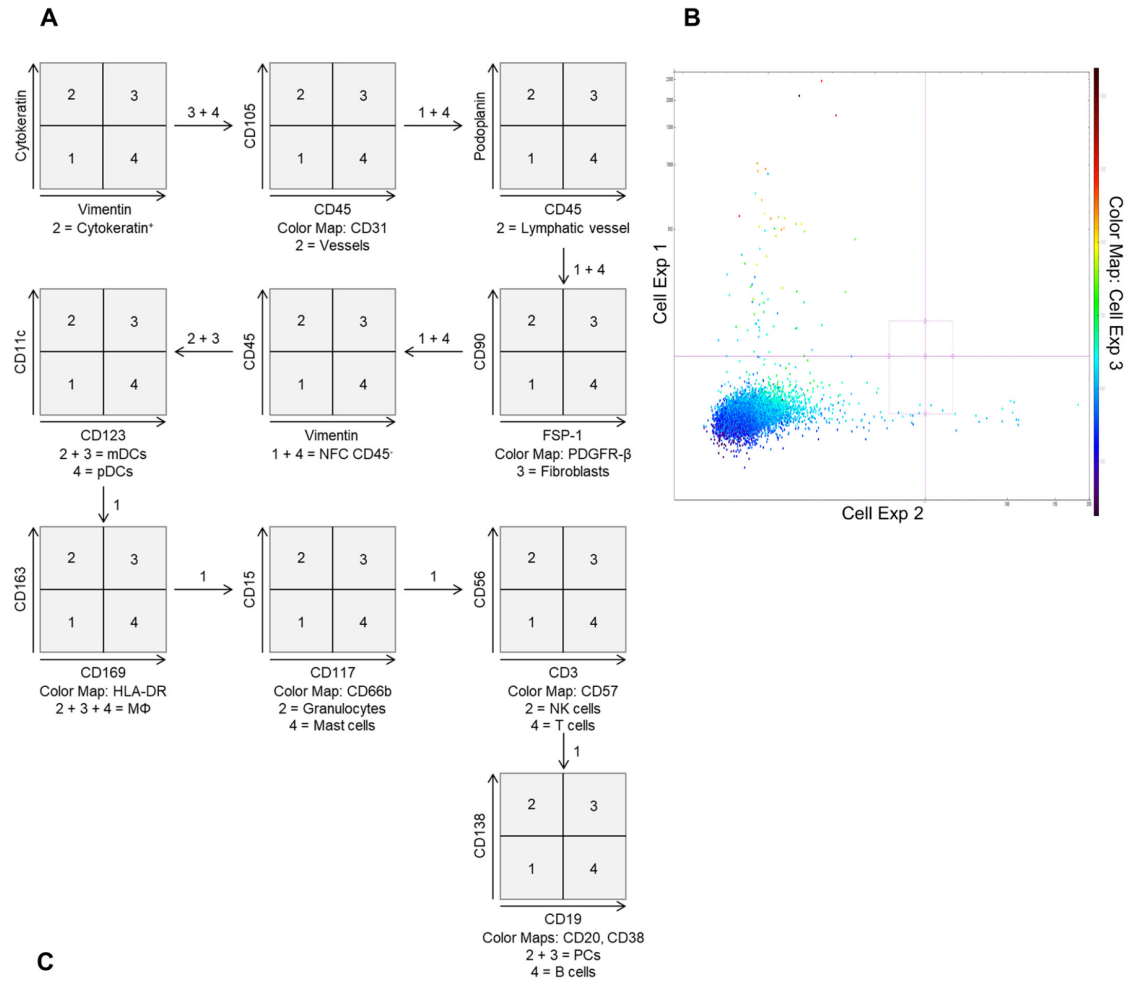


Figure S2



Supplementary Figure 2:

Cell type annotation and sub-phenotyping of human tonsil tissue. A Expert-based gating analysis for immune cells identification which can be applied to segmented cells within MACSiQ View or externally (with exported FCS files). **B** Showing the Color Map function in MACSiQ View which allows for multiparametric gating with more than two markers. **C** Marker expressions used for tonsil sub-phenotyping: mantle zone: CD27⁺, CD39⁺; GC: CD9⁺, CD10⁺, CD171⁺; non-GC: Bcl-2⁺, CD44⁺, B cell activation states (CD25⁺, CD44⁺, CD69⁺) and B cell memory phenotype (CD40⁺).

ROI sizes: 976 x 640 μm