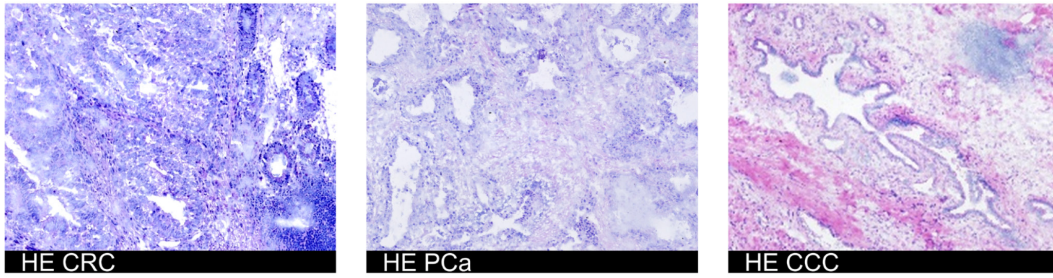


Figure S3

A



B

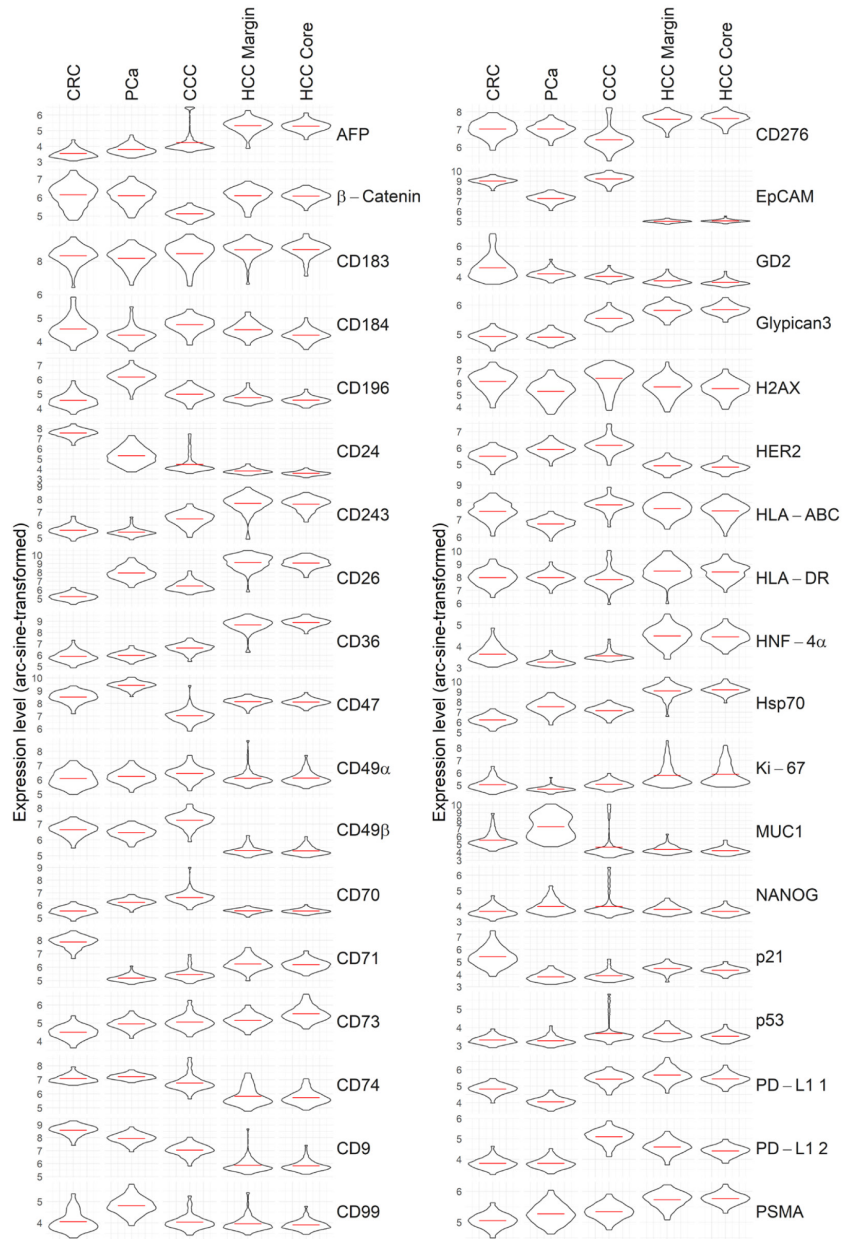


Figure S3

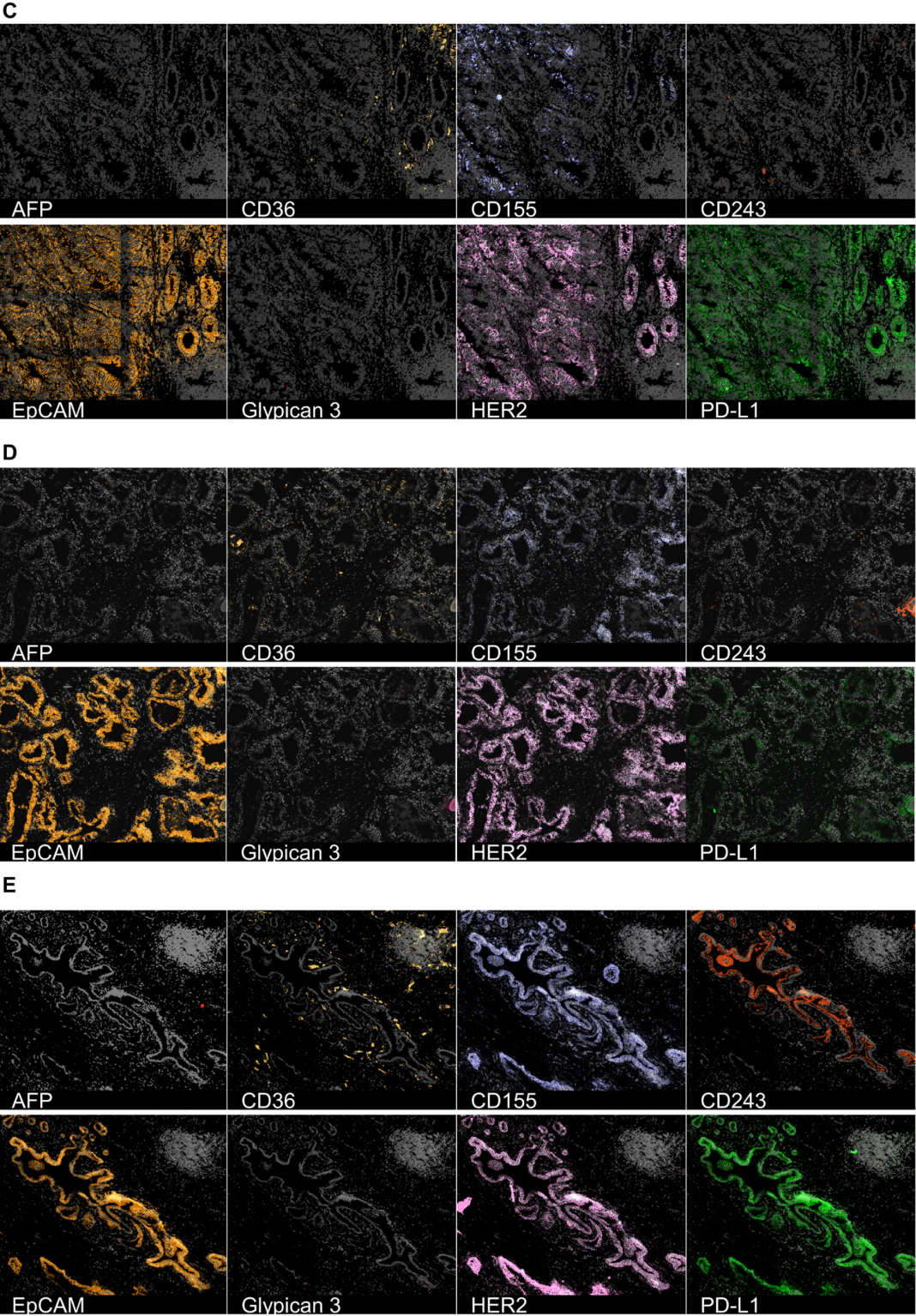
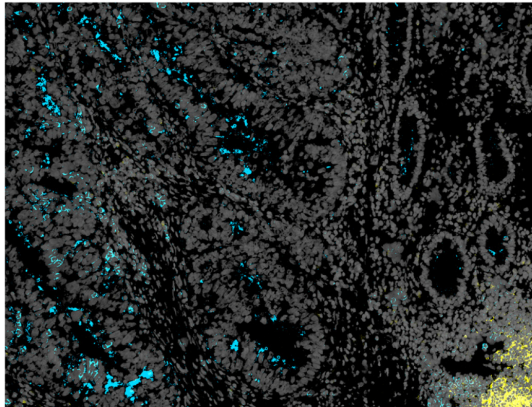
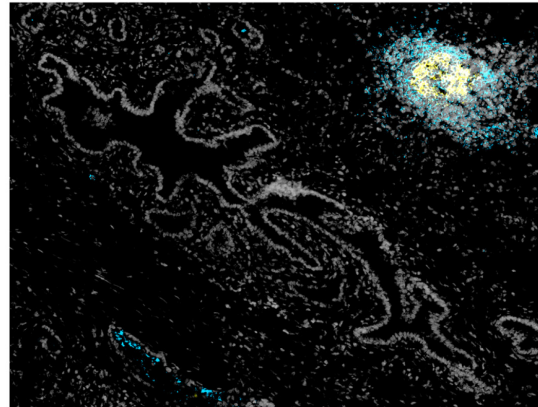


Figure S3

F

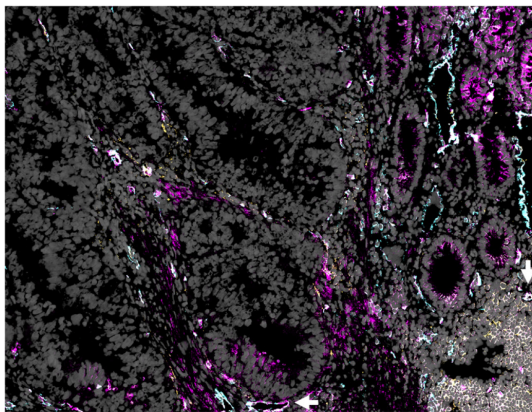


● CD21 ● CD24

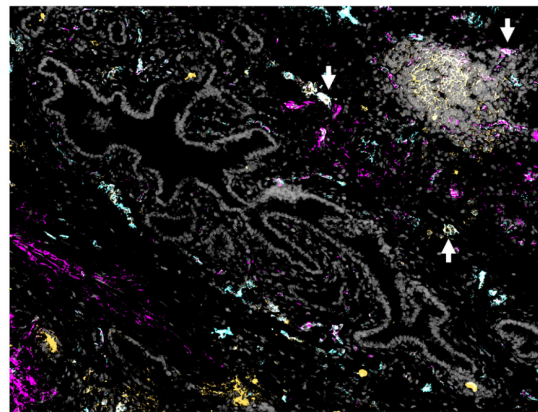


● CD21 ● CD24

G



● CD31 ● CD34 ● CD54



● CD31 ● CD34 ● CD54

Supplementary Figure 3: Deep spatial phenotyping of CRC, PCa, and CCC malignant, stromal, and immune cells. **A** H&E staining after 89-92 MICS cycles of CRC, PCa, and CCC. **B** 36 different cancer-associated protein marker expression levels depicted as violin plots, showing the tumor heterogeneity between the analyzed entities. **C-E** Staining of immunotherapeutic targets and tumor markers (AFP, CD36, CD155, CD243, EpCAM, Glypican 3, HER2, and PD-L1) on **C** CRC, **D** PCa, and **E** CCC. **F** TLS with GC reaction, shown by CD21⁺ B cells. **G** HEV formation surrounding the TLS is depicted by CD34⁺/CD54⁺ endothelial cells and highlighted by white arrowheads.

ROI sizes: CRC: 975 x 747 μ m, PCa: 974 x 747 μ m, CCC: 974 x 769 μ m.