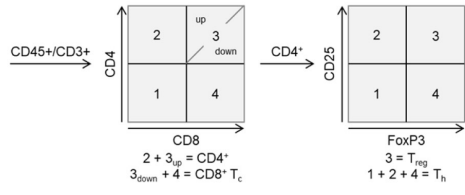
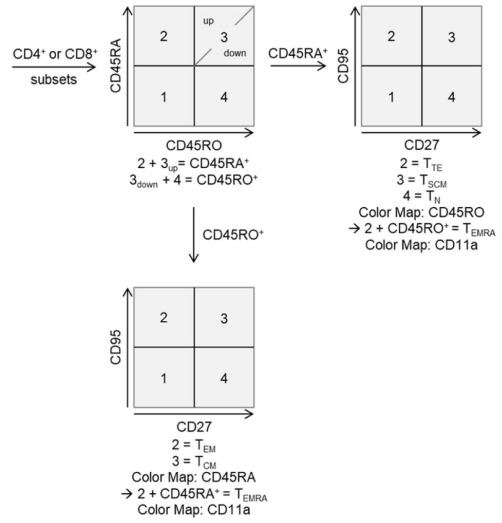


Figure S5

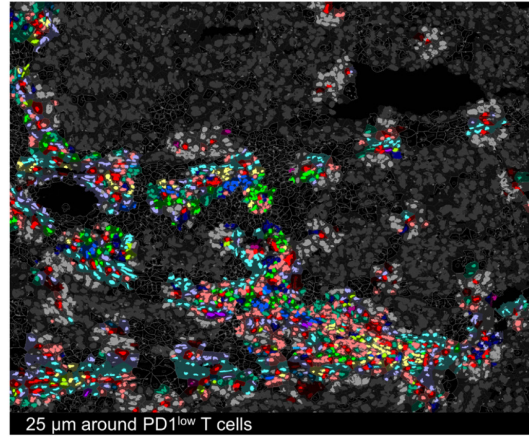
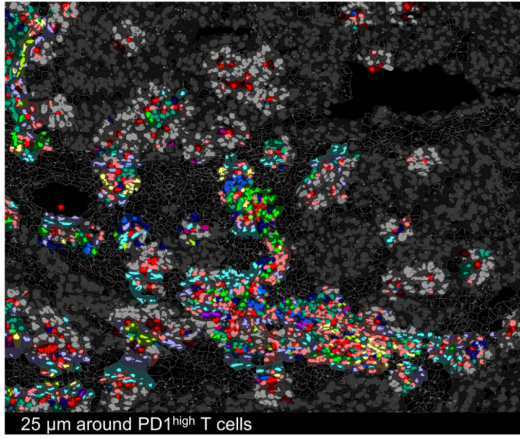
A



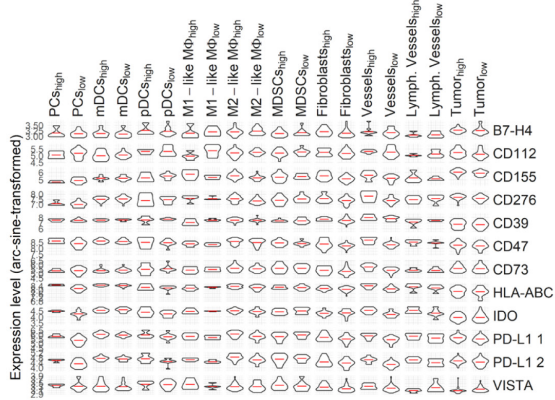
B



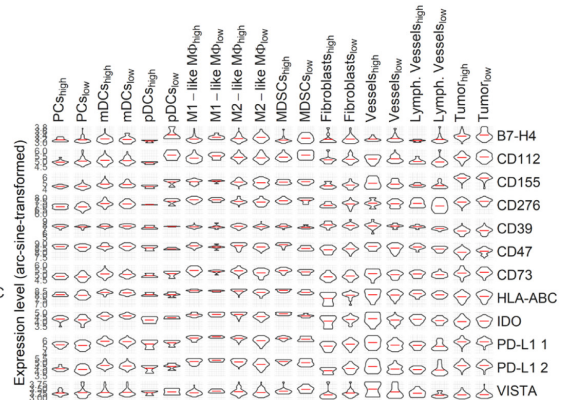
C



D



E



Supplementary Figure 5: T cell differentiation subtype gating scheme and T cell neighborhood analysis in HCC. **A** Expert-based gating analysis for identification of Th, Tc, and Treg out of a CD45⁺/CD3⁺ population. **B** Expert-based gating analysis for T cell differentiation subsets using the expression levels of CR45RA, CD45RO, CD27, CD95, and CD11a. Six T cell differentiation subsets were defined: naïve T_N cells, stem cell-like memory T_{SCM} cells, central memory T_{CM} cells, effector memory T_{EM}, effector memory cells re-expressing CD45RA T_{EMRA}, and terminally differentiated effector T_{TE} cells. **C** Exemplary neighborhood analysis of PD1^{high/low} T cells in the HCC tumor core by applying a 25 µm range. Due to a bigger range, neighboring cells of both T cells populations overlap and the informative value fades. **D, E** Expression profiles of 12 immune checkpoint or immunomodulatory molecules (B7-H4, CD112, CD155, CD276, CD39, CD47, CD73, HLA-ABC, IDO, PD-L1 1, PD-L1 2, and VISTA) for PCs, mDCs, pDCs, M1-like MΦ, M2-like MΦ, MDSCs, fibroblasts, vessel, lymphatic vessels, and tumor cells in a 5 µm range around PD1^{high/low} T cells in tumor core (**D**) and tumor margin (**E**).

ROI sizes: Tumor margin (ROI15) and tumor core (ROI16): 975 x 769 µm.