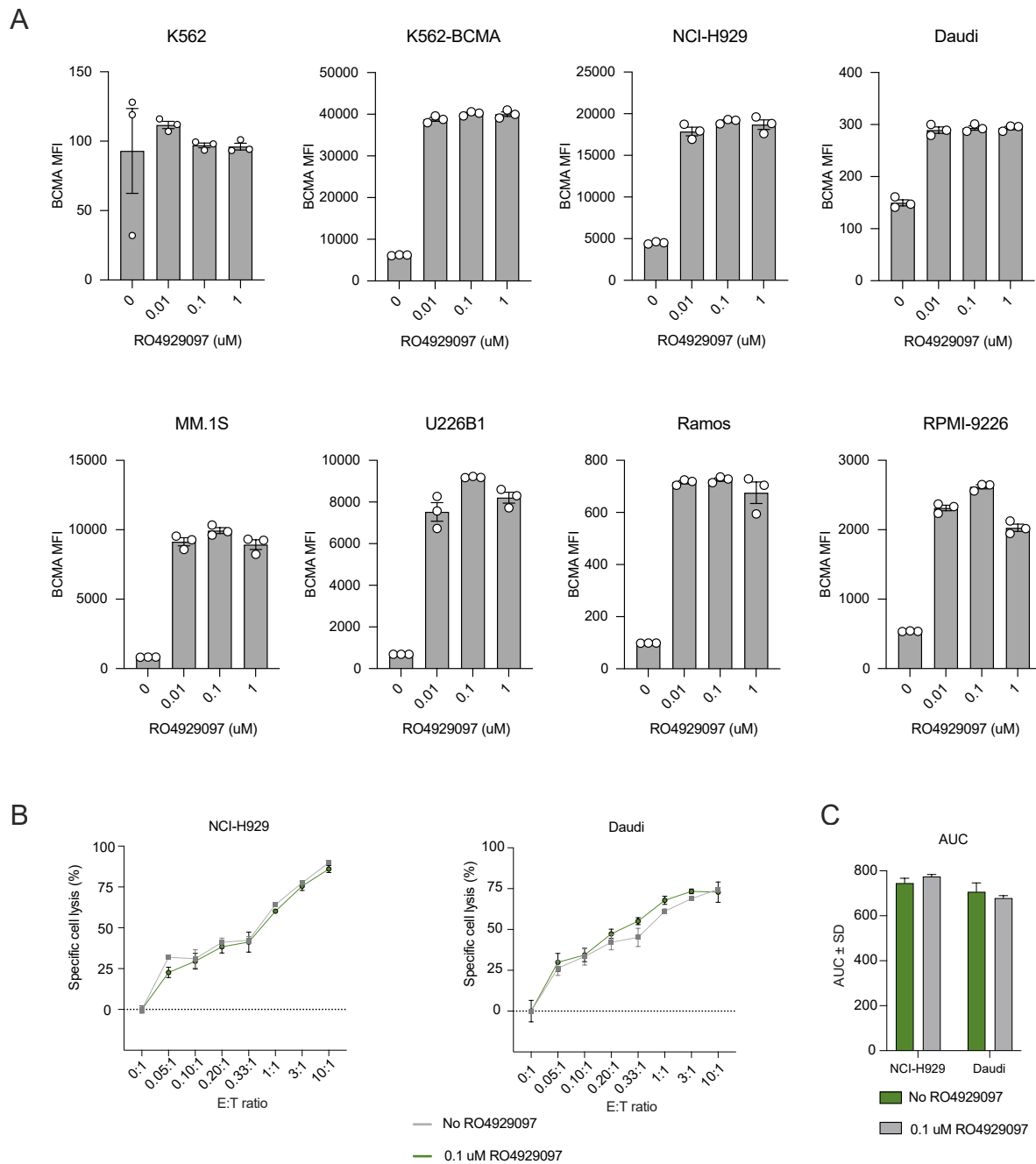


Figure S4. Gamma-secretase inhibitor RO4929097 increases BCMA expression on-target cell lines but does not improve CB-011 antitumor efficacy.



BCMA⁻ K562 and BCMA⁺ K562, NCI-H929, Daudi, MM.1S, U226B1, Ramos, and RPMI-8226 were treated with increasing concentrations of RO4929097 for 24 hours. (A) BCMA geometric mean (MFI) of target cells treated with RO4929097. (B) A 24-hour T cell cytotoxicity assay at a range of E:T ratios of CB-011 or DKO (negative T cell control) against BCMA-positive cell lines NCI-H929 and Daudi treated or not with RO4929097. (C) The AUC of data in panel B (x-axis [E:T ratios] vs y-axis [percentage of specific cell lysis]). AUC, area under the curve; BCMA, B cell maturation antigen; DKO, double knockout; E:T, effector to target; MFI, median fluorescence intensity.