

Supplementary Figure 1

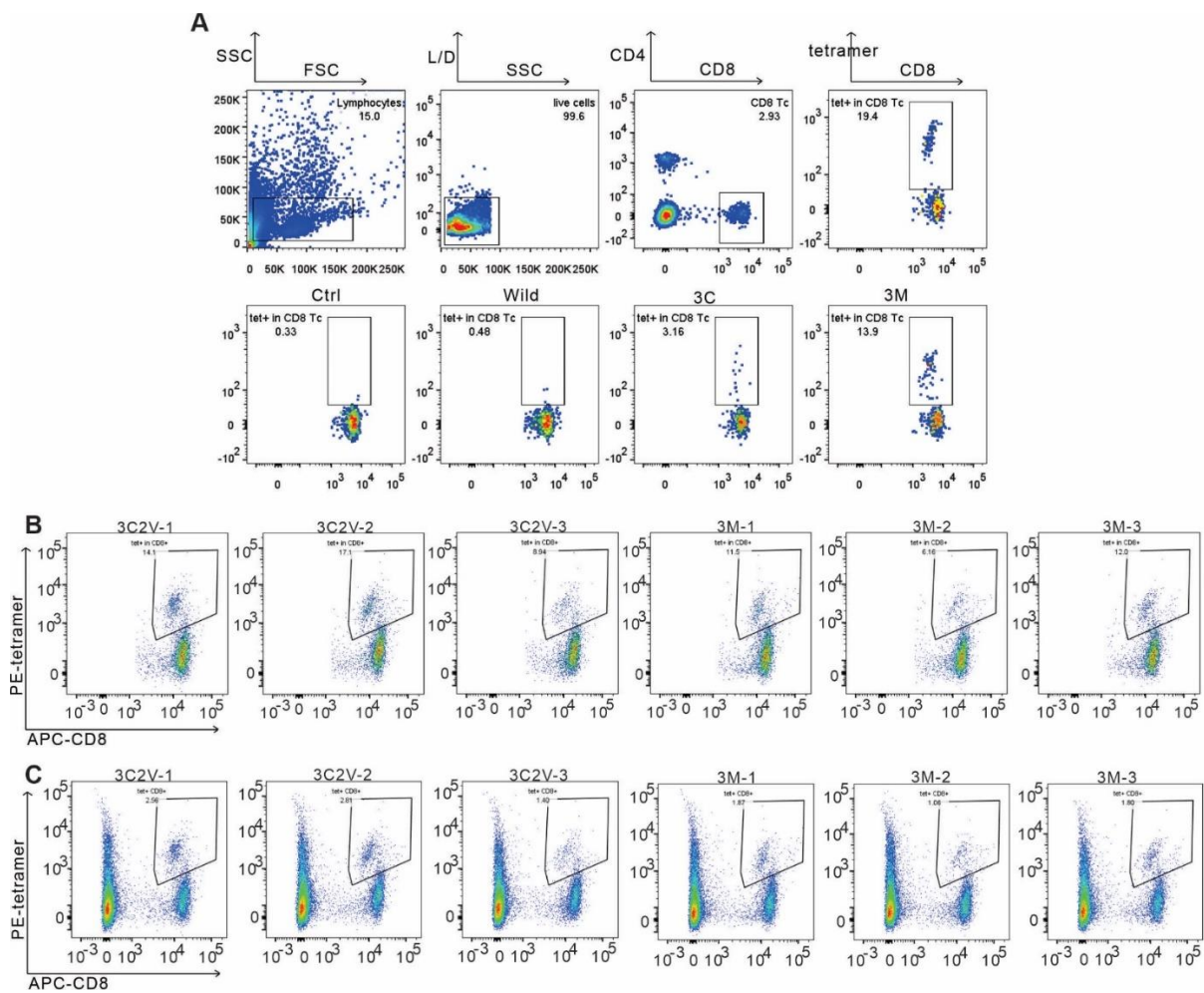
Identification of Enhanced Vaccine Mimotopes for the p15E Murine Cancer Antigen

Shiqi Zhou¹, Yiting Song¹, Yuan Luo¹, Brendan Quinn¹, Yang Jiao¹, Mark D. Long², Scott I. Abrams³, Jonathan F. Lovell^{1*}

¹ Department of Biomedical Engineering, State University of New York at Buffalo, Buffalo, NY 14260, USA

² Department of Biostatistics & Bioinformatics, Roswell Park Comprehensive Cancer Center, Buffalo, NY 14263, USA

³ Department of Immunology, Roswell Park Comprehensive Cancer Center Roswell Park Comprehensive Cancer Center, Buffalo, NY 14263, USA



Supplementary Figure S1. Flow cytometry cell gating strategy for **A)** targeting p15E wild type peptide antigen-specific CD8 T cell; Flow cytometry cell gating strategy for sorted **B)** antigen-specific and CD8 T cell-specific double positive cell percentage in all cells and **C)** percentage of antigen-specific cell in all CD 8 T cells.