

Supplementary Figure 2

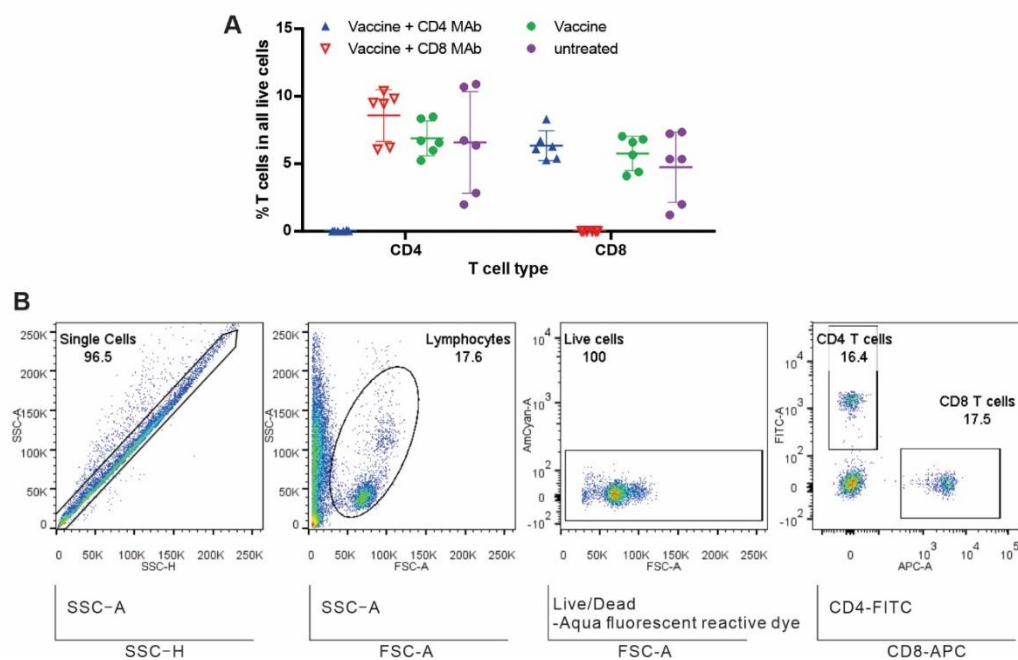
Identification of Enhanced Vaccine Mimotopes for the p15E Murine Cancer Antigen

Shiqi Zhou¹, Yiting Song¹, Yuan Luo¹, Brendan Quinn¹, Yang Jiao¹, Mark D. Long², Scott I. Abrams³, Jonathan F. Lovell^{1*}

¹ Department of Biomedical Engineering, State University of New York at Buffalo, Buffalo, NY 14260, USA

² Department of Biostatistics & Bioinformatics, Roswell Park Comprehensive Cancer Center, Buffalo, NY 14263, USA

³ Department of Immunology, Roswell Park Comprehensive Cancer Center Roswell Park Comprehensive Cancer Center, Buffalo, NY 14263, USA



Supplementary Figure S2. CD8⁺ or CD4⁺ T cells depletion with murine anti-CD8 or anti-CD4 monoclonal antibodies. Mice received intramuscular injections of indicated vaccine on days 0 and 7 before receiving intraperitoneal injections of 400 μ g *InVivo*Mab anti-mouse CD8 α antibody or 400 μ g *InVivo*Mab anti-mouse CD4 antibody on day 12 and day 13. Mice blood was collected and stained for flow cytometry. **A)** the percentage of CD4⁺ or CD8⁺ T cells in all living cells; **B)** the gating strategy of a representative sample from the vaccine-only group.